



MINISTÉRIO DA CIÊNCIA E TECNOLOGIA
INSTITUTO NACIONAL DE PESQUISAS ESPACIAIS

Relational Database Systems – Part 01

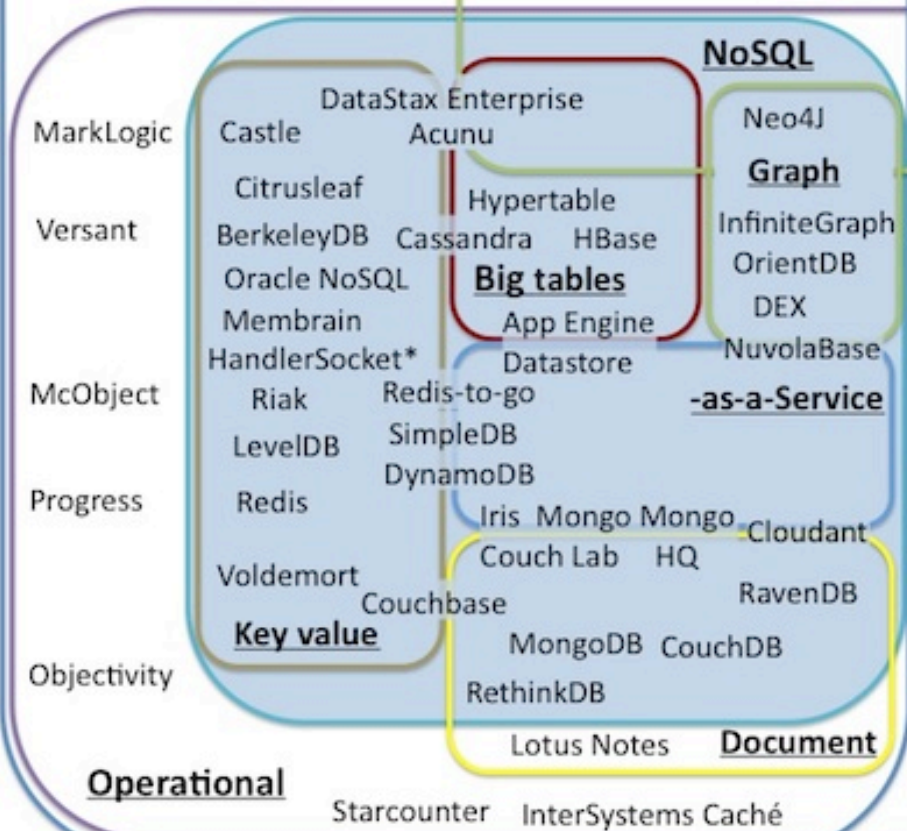
Karine Reis Ferreira

karine.ferreira@inpe.br

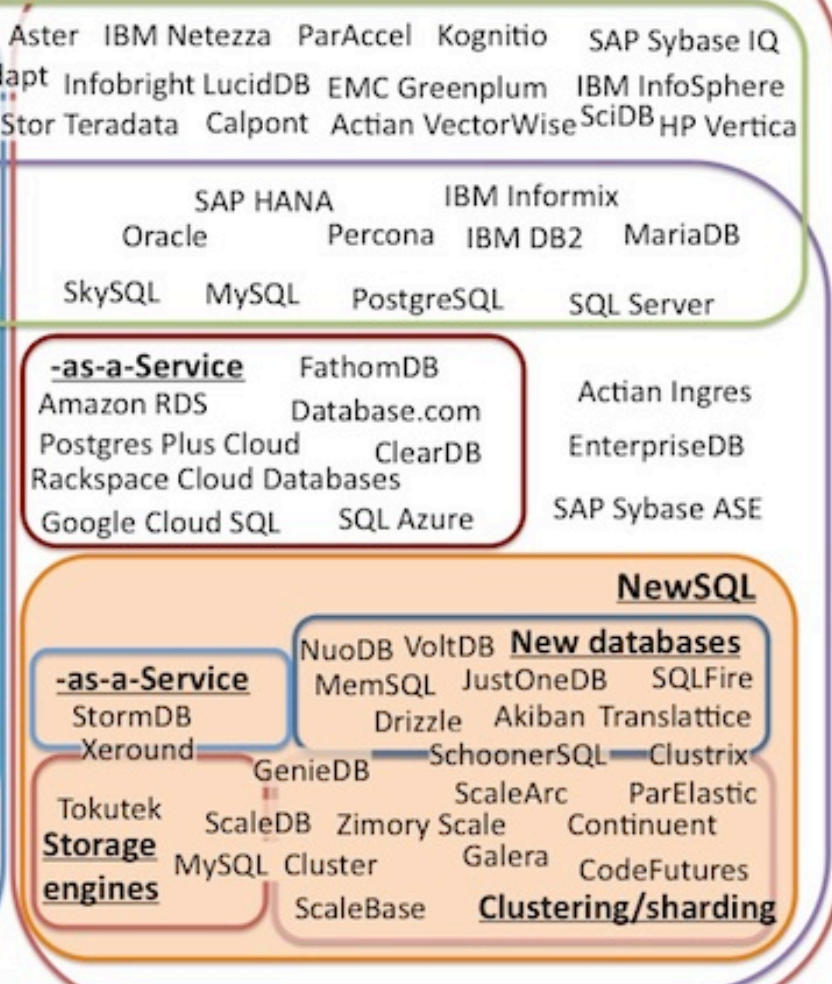
The evolving database landscape

451 Research

Non-relational



Relational



NoSQL e NewSQL

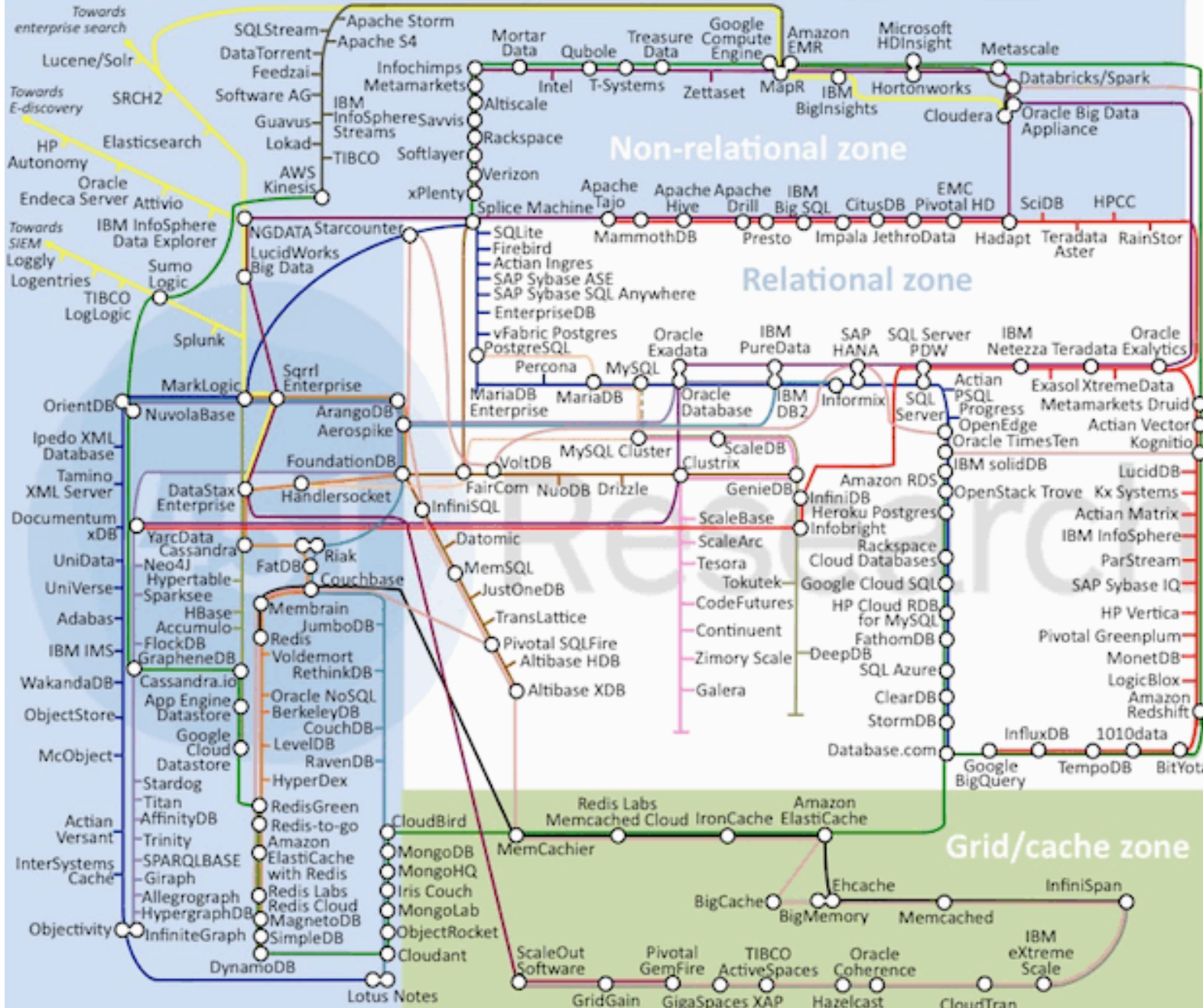
NoSQL:

- ✓ The movement began early 2009!
- ✓ Main motivation: relational database systems are not ready for big data!
- ✓ **Non-relational** database management system (schema-free, not ACID, ...)
- ✓ **Distributed**
- ✓ Open Source
- ✓ **Horizontally scalable**
- ✓ Easy replication support and simple API
- ✓ Examples: Cassandra, MongoDB, CouchBD, Neo4J, ...

NewSQL:

- ✓ New relational database products and services designed to bring the benefits of the **relational model** to **distributed architectures**.
- ✓ SQL as the primary mechanism
- ✓ ACID properties support
- ✓ **Horizontally scalable**
- ✓ Examples of NewSQL database products: VoltDB, RethinkDB, MySQL Cluster with NDB, ...
- ✓ Examples of NewSQL services: Amazon Relational Database Service, Microsoft SQL Azure, Xeround, ...

Data Platforms Landscape Map – February 2014



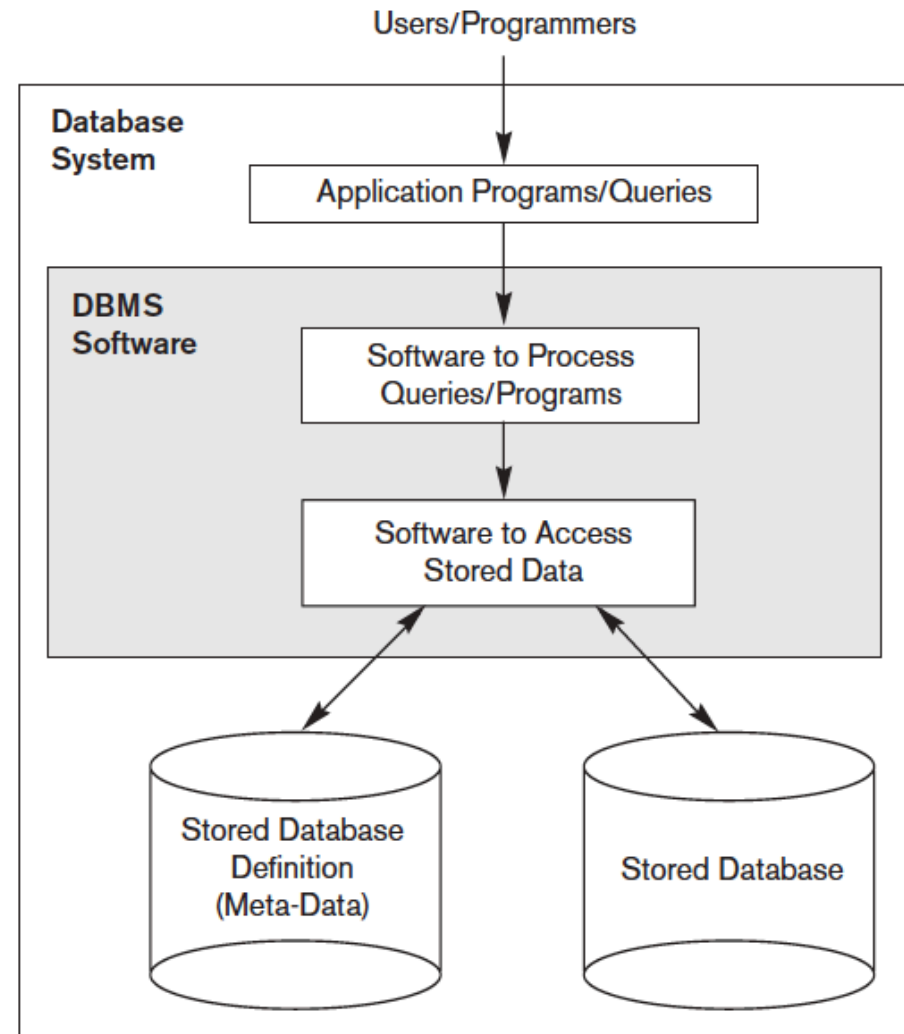
- Key:**
- General purpose
 - Specialist analytic
 - -as-a-Service
 - - - NoSQL extension
 - BigTables
 - Graph
 - Document
 - Key value stores
 - Key value direct access
 - Hadoop
 - - - NewSQL extension
 - MySQL storage engines
 - Advanced clustering/sharding
 - New SQL databases
 - Data caching
 - Data grid
 - Search
 - Appliances
 - Off-heap memory
 - In-memory
 - Stream processing

Database System

Database:

- ✓ is a collection of related data.
- ✓ represents some aspect of the real world
- ✓ is a logically coherent collection of data with some inherent meaning.
- ✓ is designed, built, and populated with data for a specific purpose.

Example: Amazon.com (over 2 terabytes - 200 different servers)



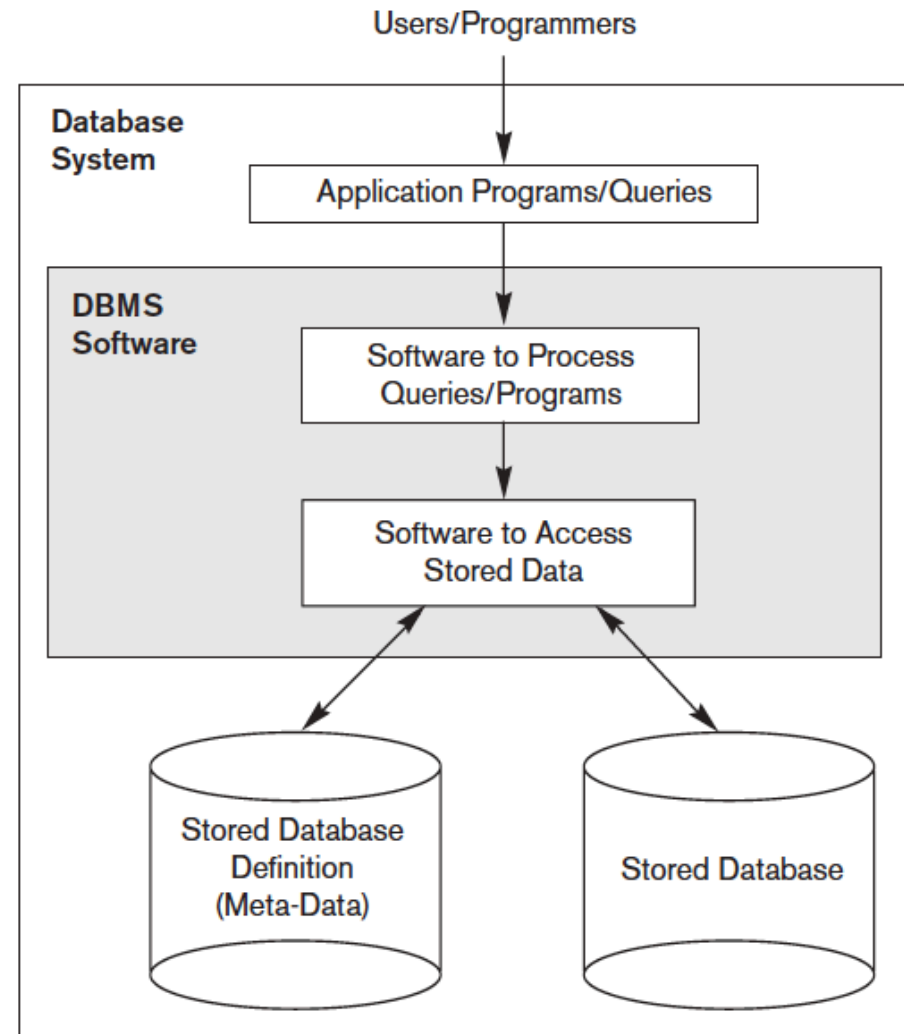
Source: (Elmasri and Navathe, 2011)

Fundamentals of Database Systems – 6th

Database System

Database Management System (DBMS):

- ✓ is a collection of programs that enables users to create and maintain a database.
- ✓ system that facilitates the processes of defining, constructing, manipulating, and sharing databases among various users and applications.

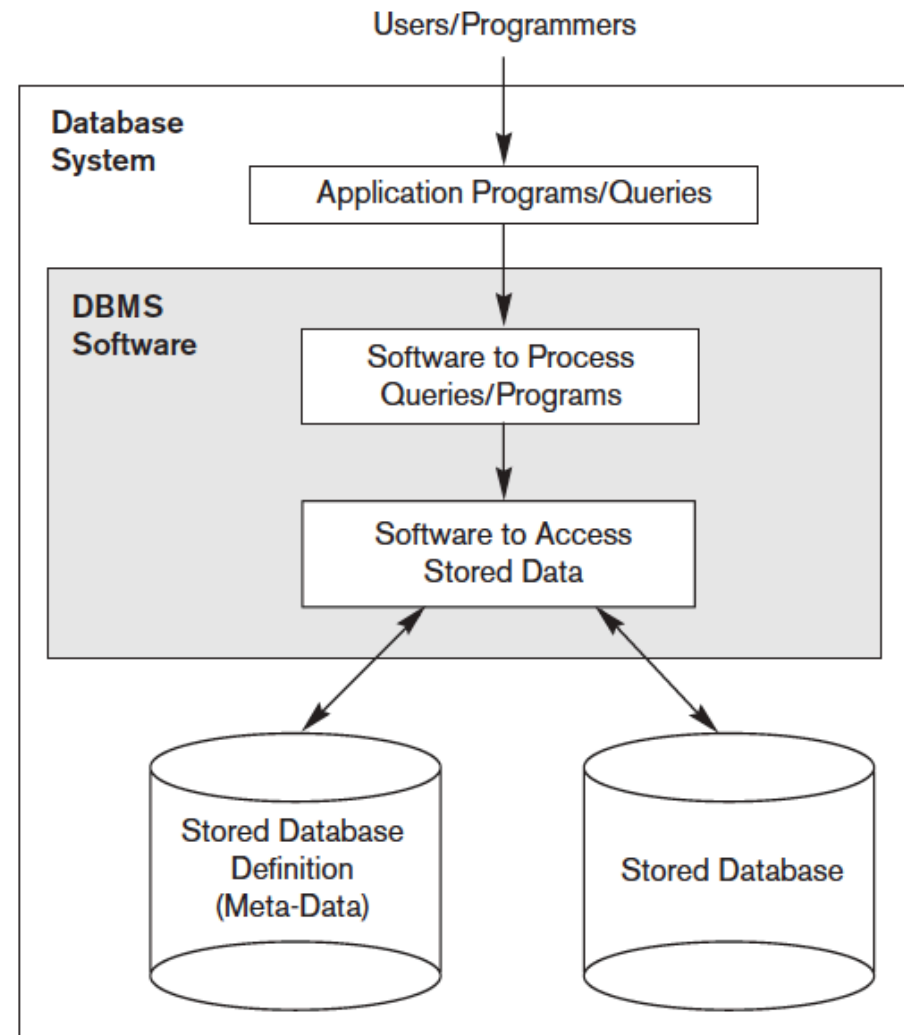


Source: (Elmasri and Navathe, 2011)

Database System

An **application program** accesses the database by sending queries or requests for data to the DBMS.

Database System: Database + DBMS Software + Application Programs.



Source: (Elmasri and Navathe, 2011)

Advantages of using DBMS

① Controlling redundancy

- ✓ Problems: duplication of effort, wasted storage space, inconsistent.
- ✓ Data normalization

② Restricting unauthorized access

- ✓ Security and authorization subsystem: create accounts and restrictions.

③ Providing persistent storage for program objects

- ✓ Complex object in C++ stored permanently in an object-oriented DBMS

④ Providing storage structures and search techniques for efficient query processing

- ✓ Indexes, buffering/caching, query processing and optimization module

Advantages of using DBMS

⑤ Providing backup and recovery

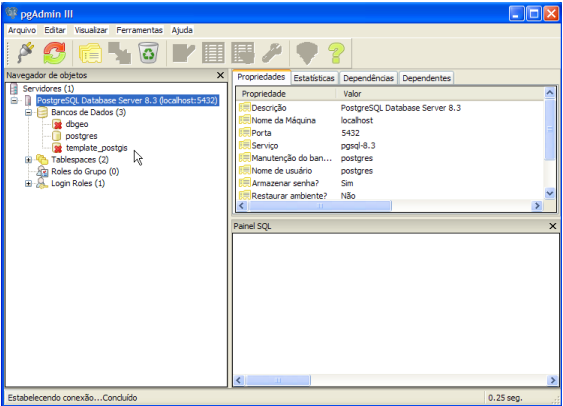
- ✓ Recovery subsystem: ensure that the transaction is resumed from the point at which it was interrupted so that its full effect is recorded in the database.

⑥ Providing multiple user interfaces

- ✓ Query languages, programming language interfaces, Graphical User Interfaces (GUIs), web GUI interfaces, etc.

DBMS: Multiple User Interfaces

GUI

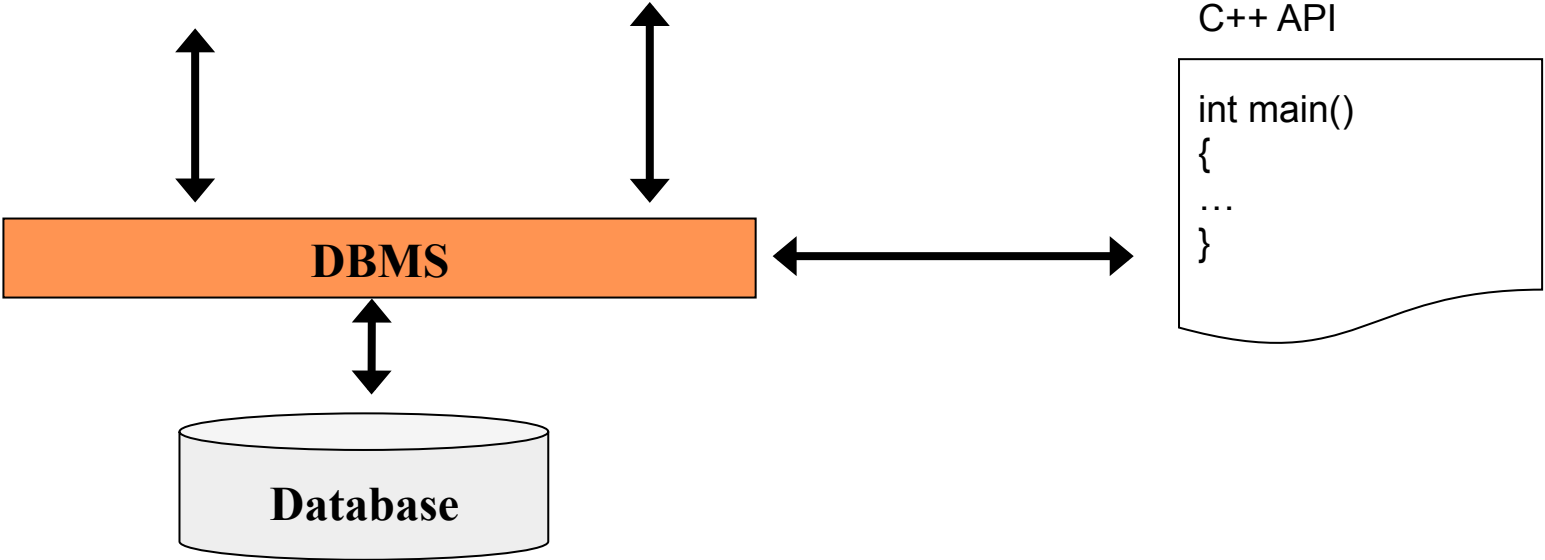


Prompt



C++ API

```
int main()
{
  ...
}
```



Advantages of using DBMS

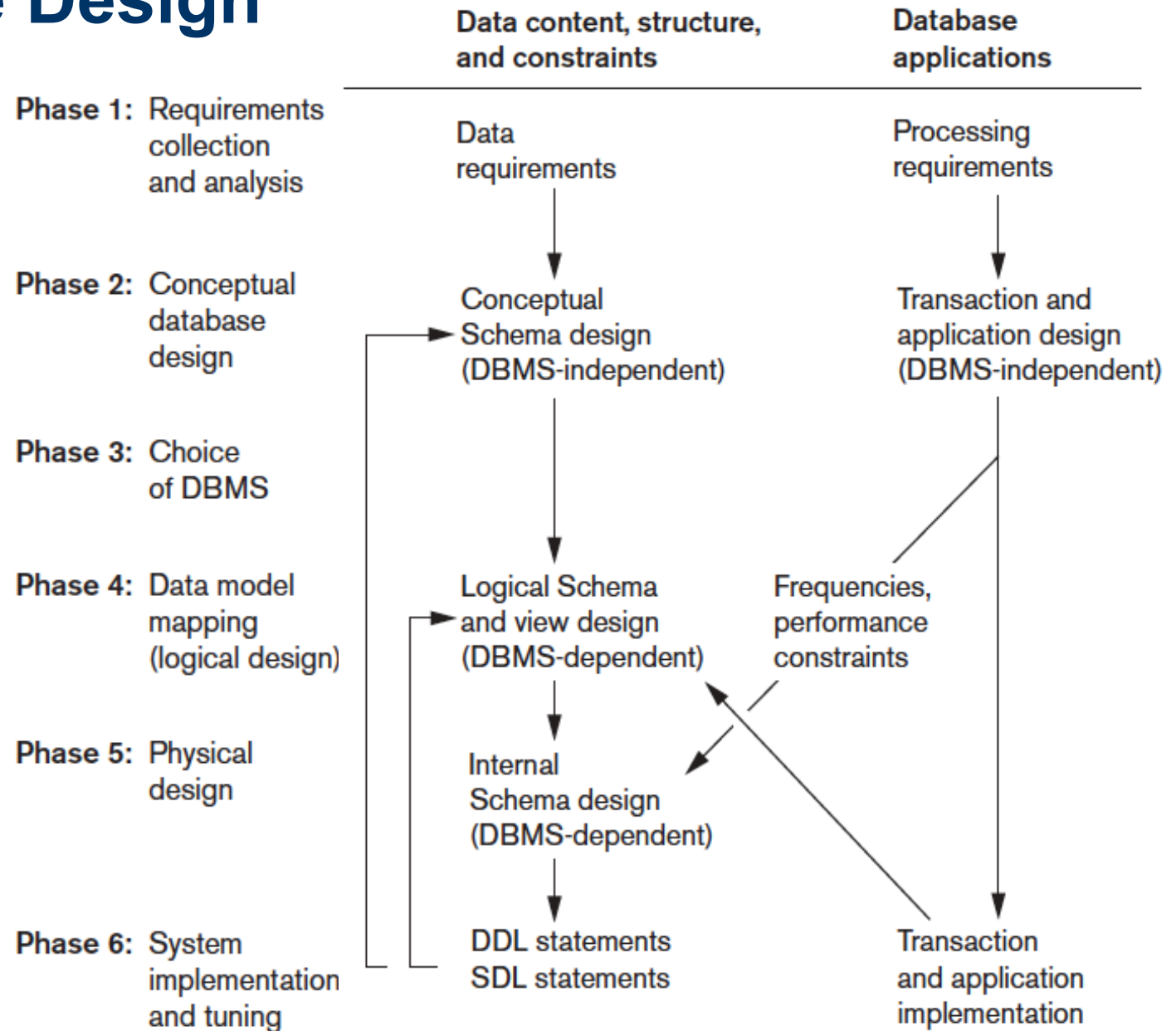
- ⑦ Representing complex relationships among data
 - ✓ Represent a variety of complex relationships among the data, define new relationships, and retrieve and update related data easily and efficiently.
- ⑧ Enforcing integrity constraints
 - ✓ Integrity constraints: referential integrity, key or uniqueness, semantics, ...
- ⑨ Permitting inference and actions using rules
 - ✓ Deductive database systems: define *deduction rules* for *inferencing* new information from the stored database facts.
 - ✓ Triggers, stored procedures, ...

Data Model

Data model: a collection of concepts that can be used to describe the structure of a database.

- ✓ **High-level or conceptual data models:** provide concepts that are close to the way many users perceive data. Ex.: Entity-Relationship model
- ✓ **Representational or implementation data models:** provide concepts that may be easily understood by end users but that are not too far removed from the way data is organized in computer storage. Ex.: Relational data model
- ✓ **Low-level or physical data models:** provide concepts that describe the details of how data is stored on the computer storage media.

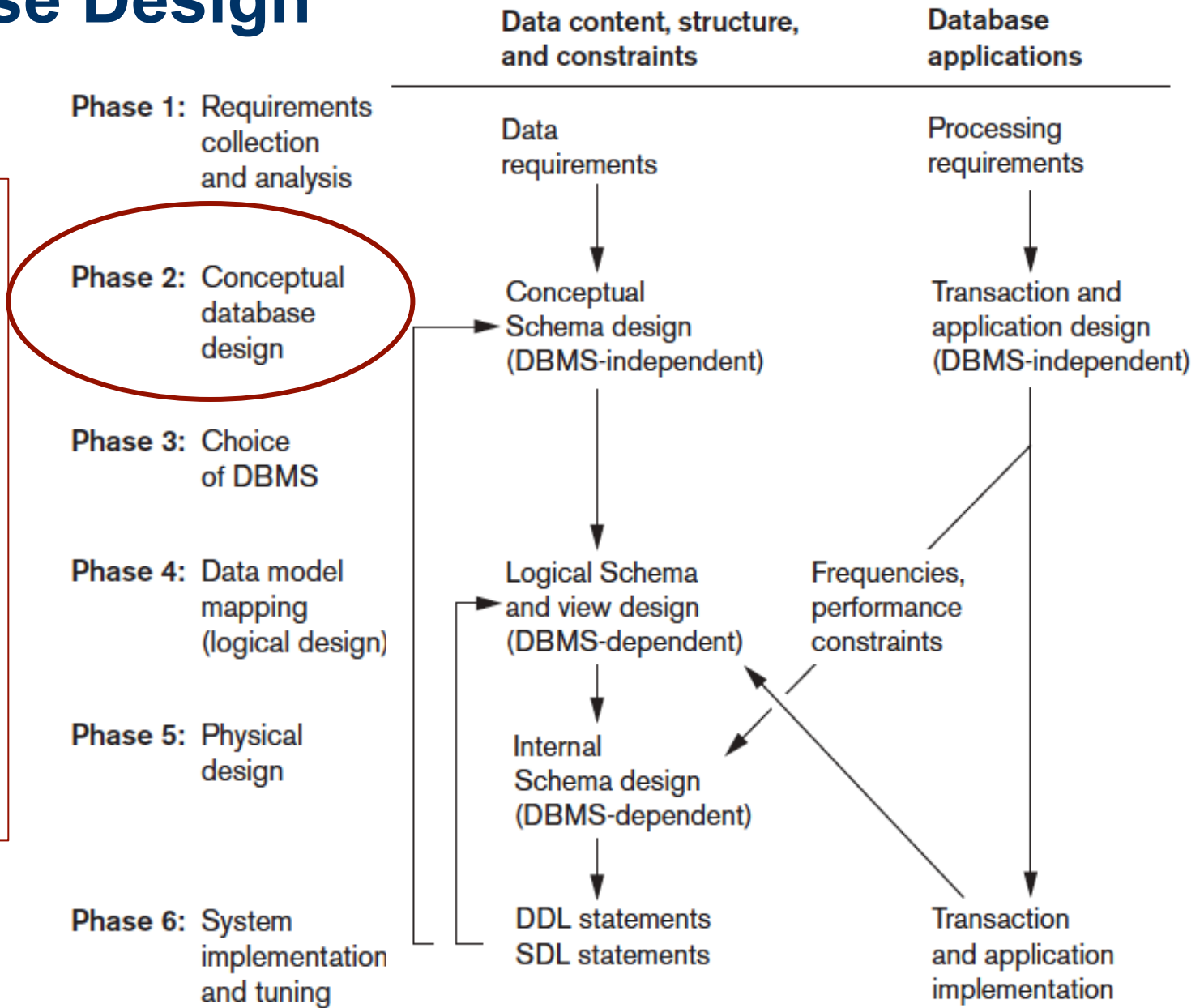
Database Design



Database Design

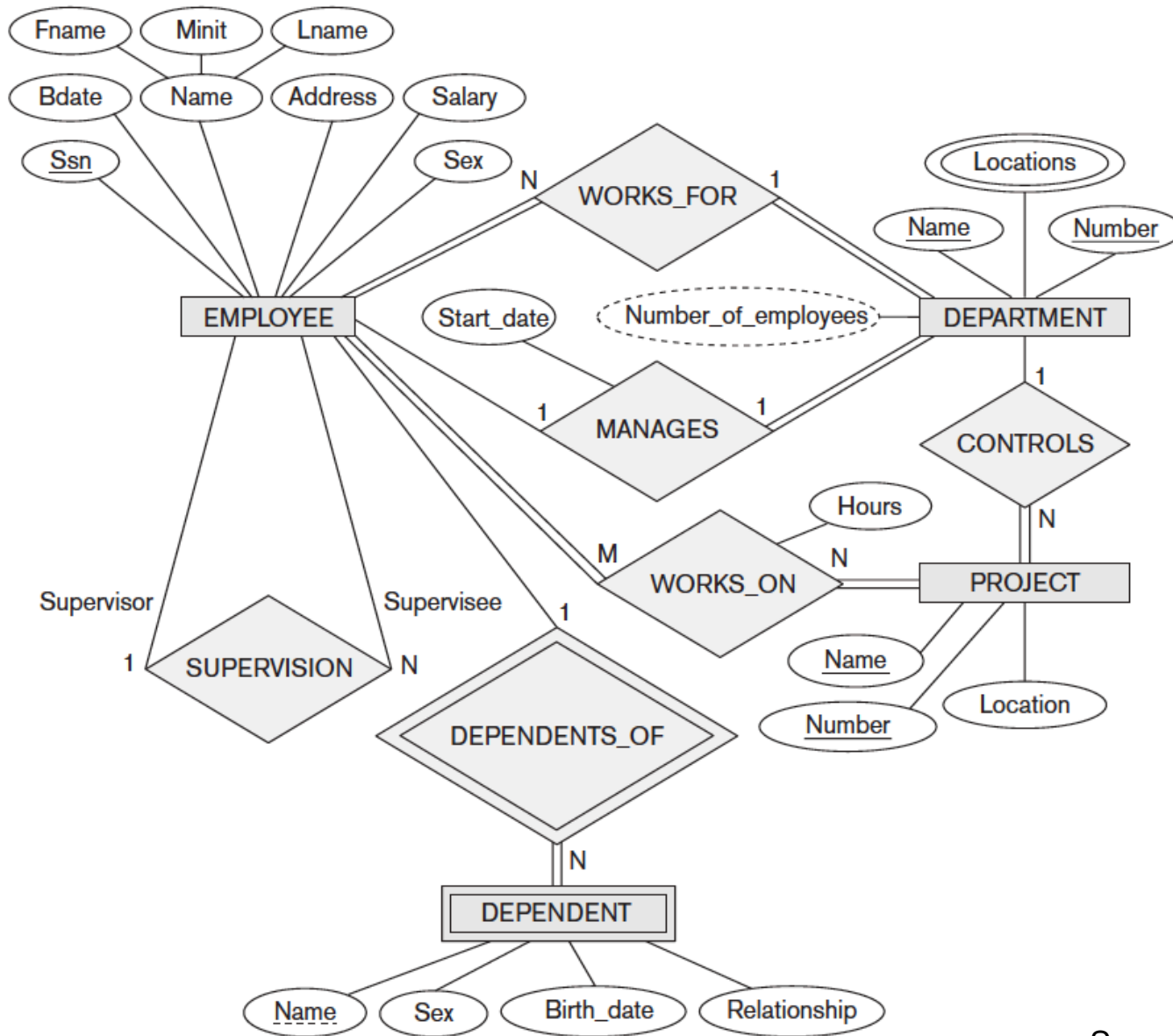
Conceptual schema for the database that is independent of a specific DBMS.

High-level data model ER or EER model

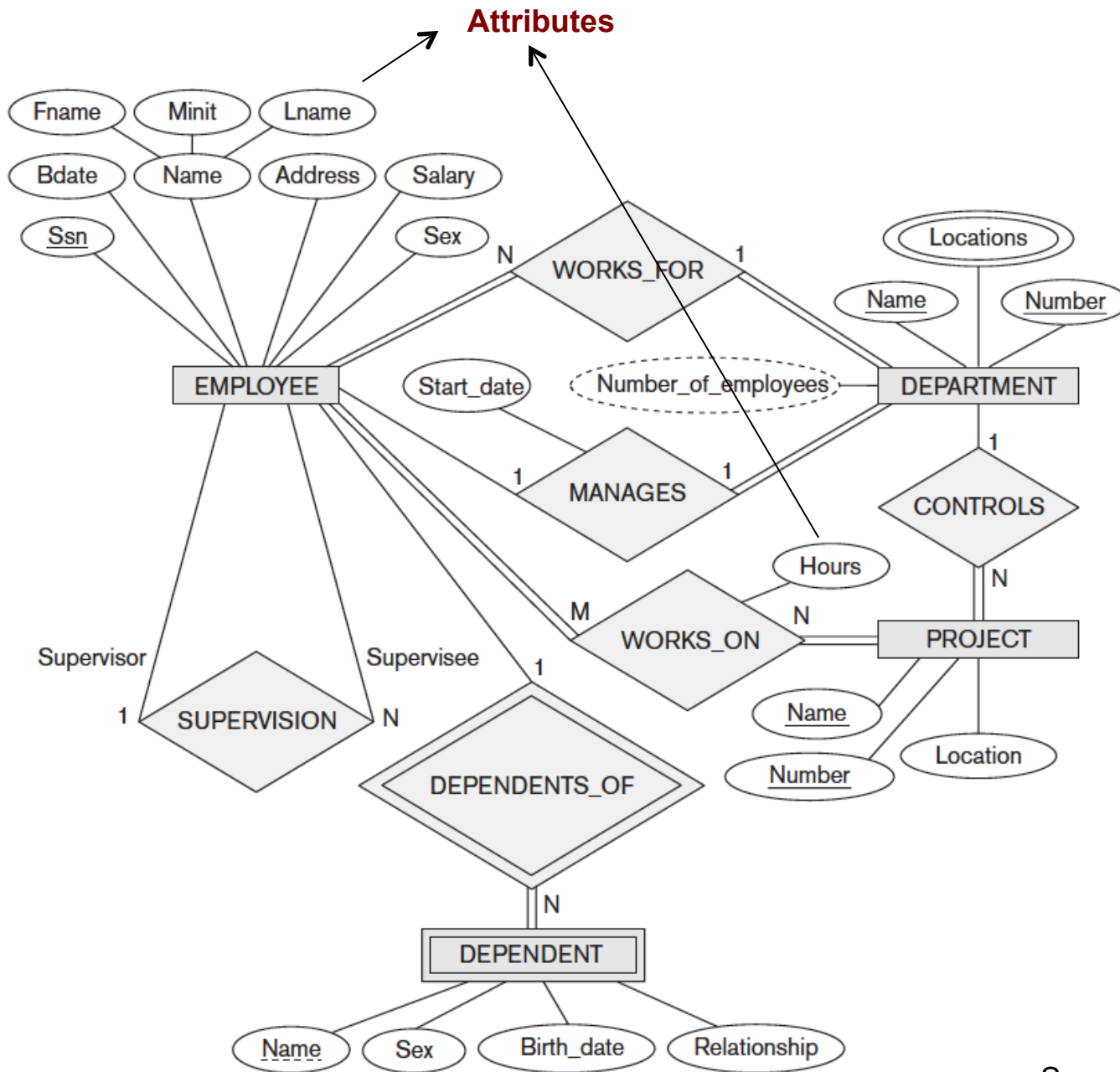


Entity-Relationship – ER Model

- ✓ Proposed in 1976 by Peter Chen
- ✓ Conceptual data models use concepts such as *entities*, *attributes*, and *relationships*:
 - ✓ **Entity**: real-world object or concept from the miniworld that is described in the database.
 - ✓ **Attribute**: property of interest that further describes an entity.
 - ✓ **Relationship**: association among the entities.



Source: (Elmasri and Navathe, 2011)



Entities:

EMPLOYEE,
DEPARTMENT,
PROJECT,
DEPENDENT

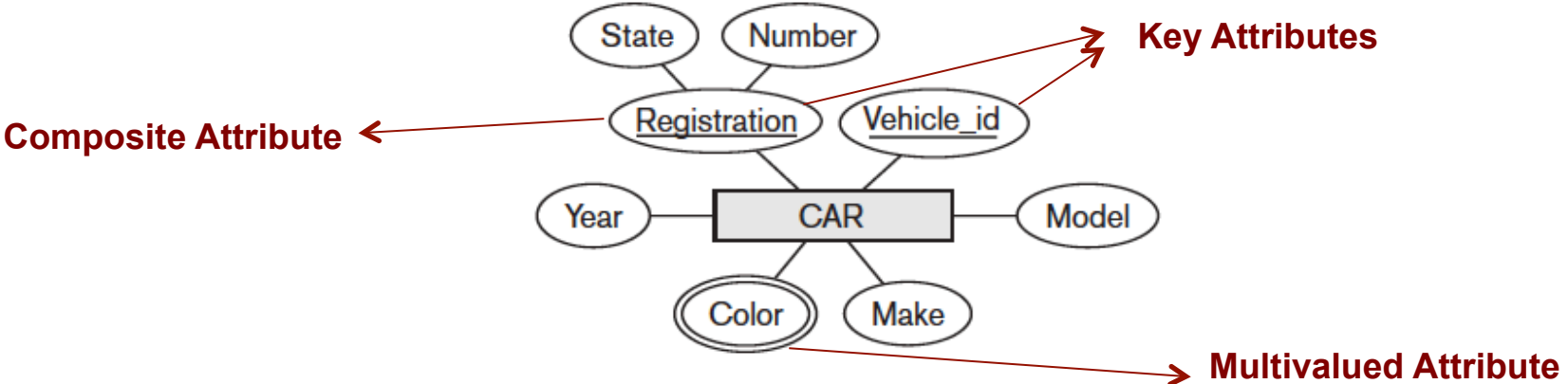
Relationships:

WORKS_FOR,
MANAGES,
CONTROLS,
WORKS_ON,
DEPENDENT_OF,
SUPERVISION

ER Model – Types of Attributes

- ✓ **Composite** versus **Simple** (Atomic) Attributes => Composite: can be divided into smaller subparts (ex. Name). Simple: are not divisible.
- ✓ **Single-Valued** versus **Multivalued** Attributes => Single-Valued: have a single value for a particular entity (ex. BDate, Sex). Multivalued: can have multiple values (ex. Color of a car, Locations).
- ✓ **Stored** versus **Derived** Attributes => The Age attribute is a derived attribute and is said to be derivable from the BDate attribute, which is called a stored attribute.
- ✓ **NULL** Values => A particular entity may not have an applicable value for an attribute.

ER Model – Key Attributes



CAR
 Registration (Number, State), Vehicle_id, Make, Model, Year, {Color}

<p>CAR₁ ((ABC 123, TEXAS), TK629, Ford Mustang, convertible, 2004 {red, black})</p> <p>CAR₂ ((ABC 123, NEW YORK), WP9872, Nissan Maxima, 4-door, 2005, {blue})</p> <p>CAR₃ ((VSY 720, TEXAS), TD729, Chrysler LeBaron, 4-door, 2002, {white, blue})</p> <p>⋮</p>
--

Source: (Elmasri and Navathe, 2011)

ER Model – Domains of Attributes

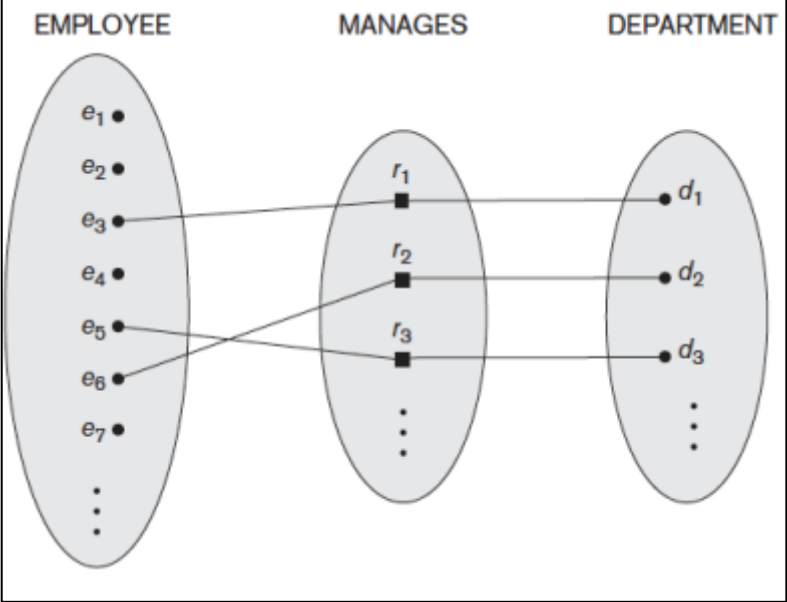
- ✓ **Value Sets (Domains) of Attributes:** Each simple attribute of an entity is associated with a value set (or domain of values), which specifies the set of values that may be assigned to that attribute for each individual entity.
 - ✓ Example: the range of ages allowed for employees is between 16 and 70 => set of **integer** numbers between 16 and 70.
 - ✓ integer, string, Boolean, float, enumerated type, etc...

ER Model – Relationships

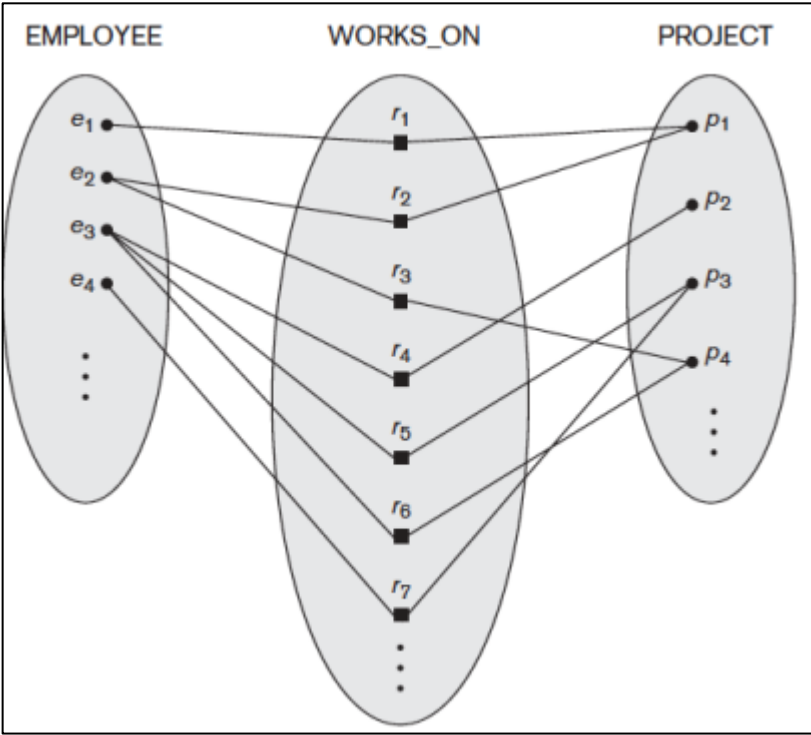
- ✓ **Degree:** number of participating entities. Binary: between two entities, ternary: among three entities, and so on.
- ✓ **Recursive** relationships: between two instances of the same entity. Ex. SUPERVISION
- ✓ **Cardinality** ratios for binary relationships: 1:1, 1:N, N:1, and M:N.
 - ✓ Ex: MANAGES (1:1), WORKS_FOR (1:N), WORKS_ON (M:N)
- ✓ **Attributes:** relationship can also have attributes, similar to those of entities.

ER Model – Cardinality

1:1



N:N

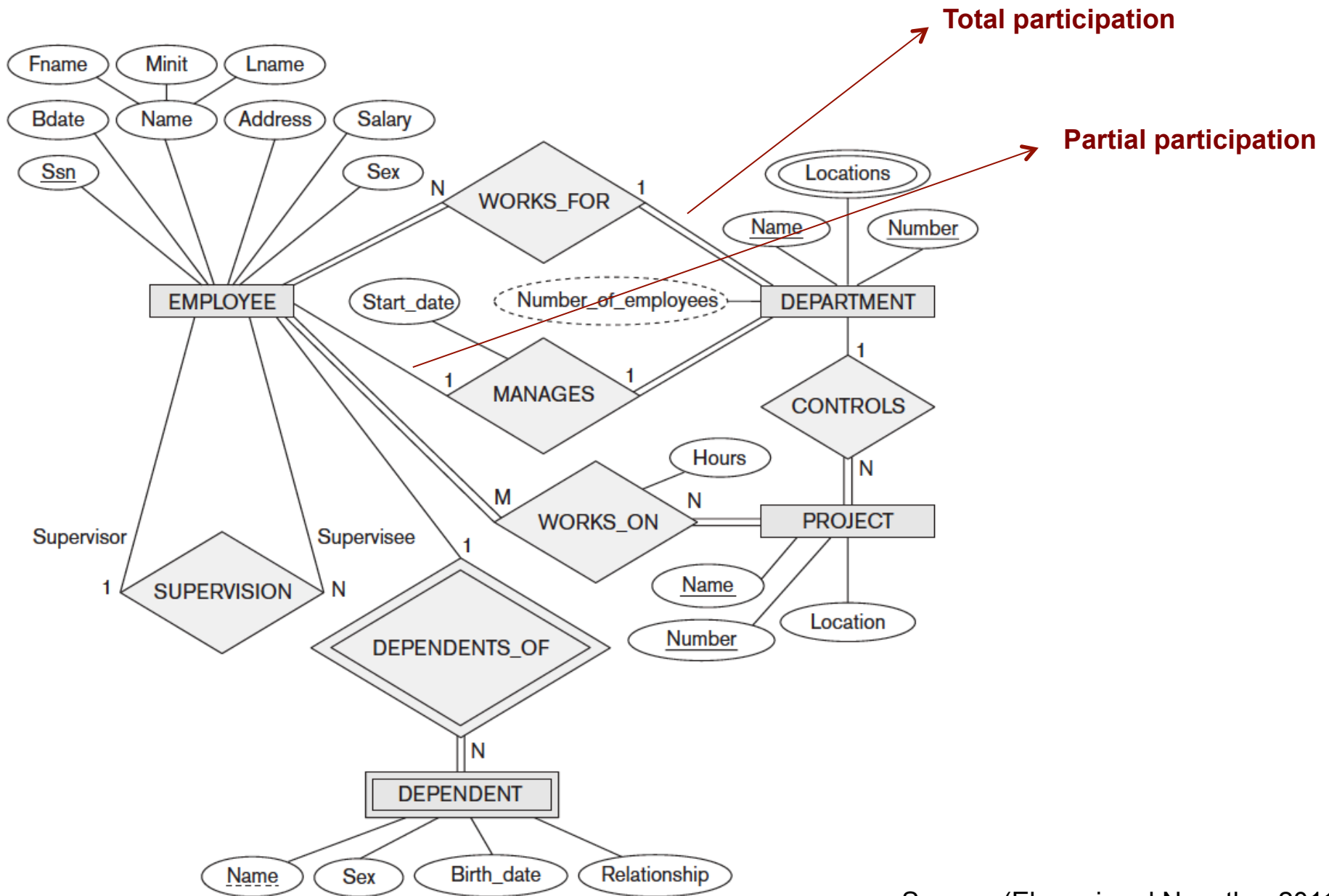


Source: (Elmasri and Navathe, 2011)

ER Model – Relationships

- ✓ **Participation Constraints and Existence Dependencies:**
 - ✓ **Total participation:** every entity in the total set of employee entities must be related to a department entity via WORKS_FOR. Total participation is also called **existence dependency**.
 - ✓ **Partial participation:** some or part of the set of employee entities are related to some department entity via MANAGES, but not necessarily all.

In ER diagrams, total participation (or existence dependency) is displayed as a *double line* connecting the participating entity type to the relationship, whereas partial participation is represented by a single line.

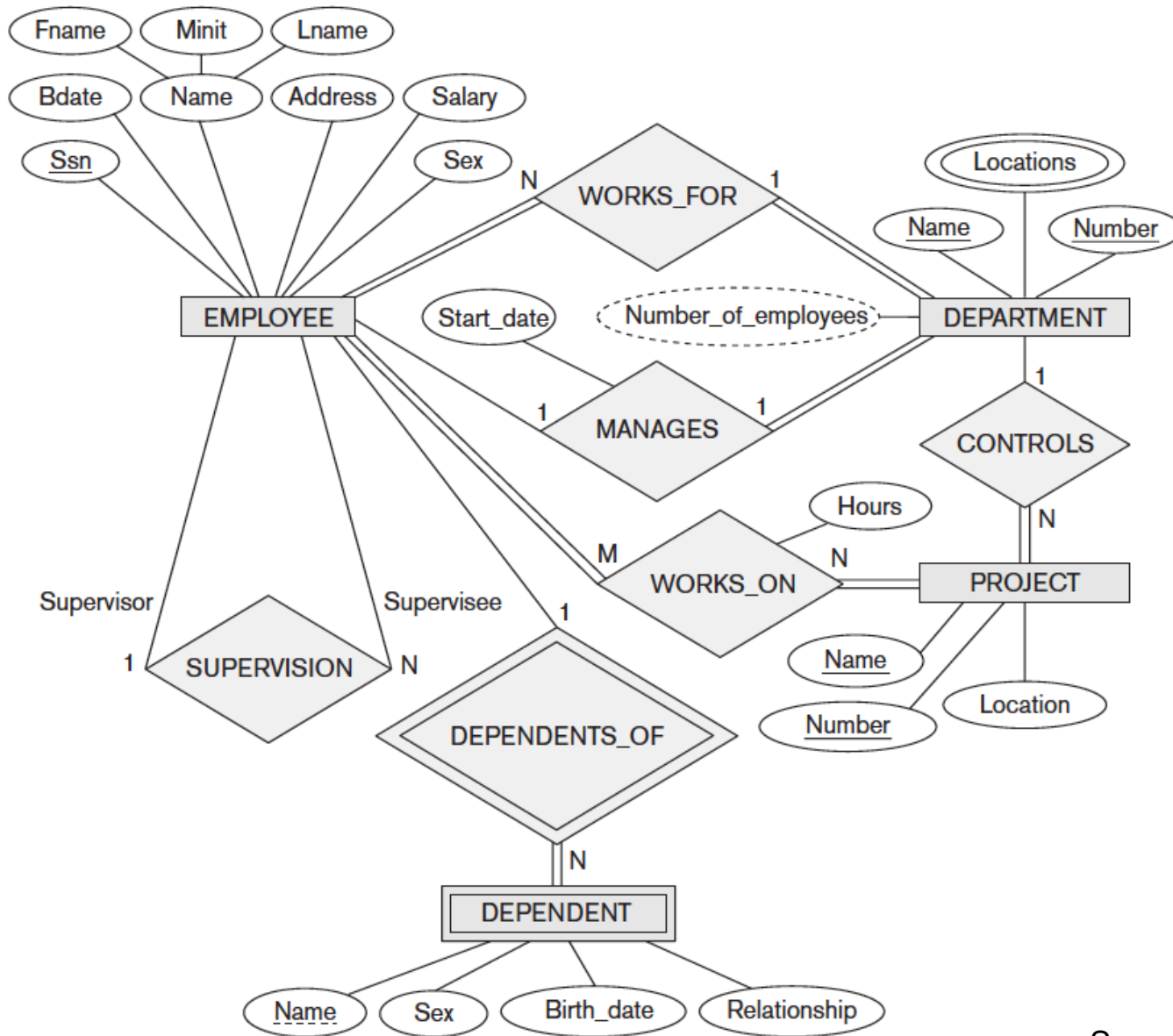


Source: (Elmasri and Navathe, 2011)

ER Model – Weak Entity

- ✓ **Weak entity:** entity that do not have key attributes of their own. A weak entity type always has a *total participation constraint* (existence dependency) with respect to its **identifying relationship** because a weak entity cannot be identified without an owner entity. A weak entity type normally has a **partial key**, which is the attribute that can uniquely identify weak entities that are related to the same owner entity. Ex. DEPENDENT
- ✓ **Strong entity:** regular entity that do have a key attribute.


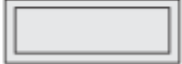







In ER diagrams, both a weak entity type and its identifying relationship are distinguished by surrounding their boxes and diamonds with double lines. The partial key attribute is underlined with a dashed or dotted line.



Source: (Elmasri and Navathe, 2011)

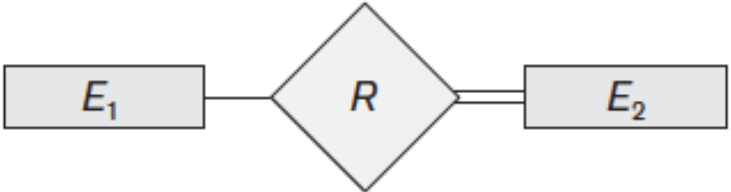
ER Model – Notations

Source: (Elmasri and Navathe, 2011)

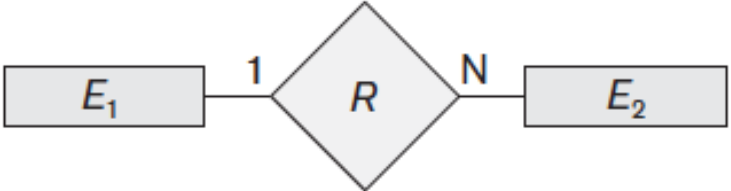
Symbol	Meaning
	Entity
	Weak Entity
	Relationship
	Identifying Relationship
	Attribute
	Key Attribute
	Multivalued Attribute
	Composite Attribute
	Derived Attribute

ER Model – Notations

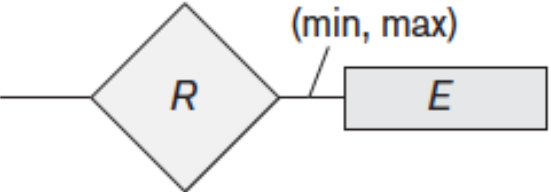
Source: (Elmasri and Navathe, 2011)



Total Participation of E_2 in R

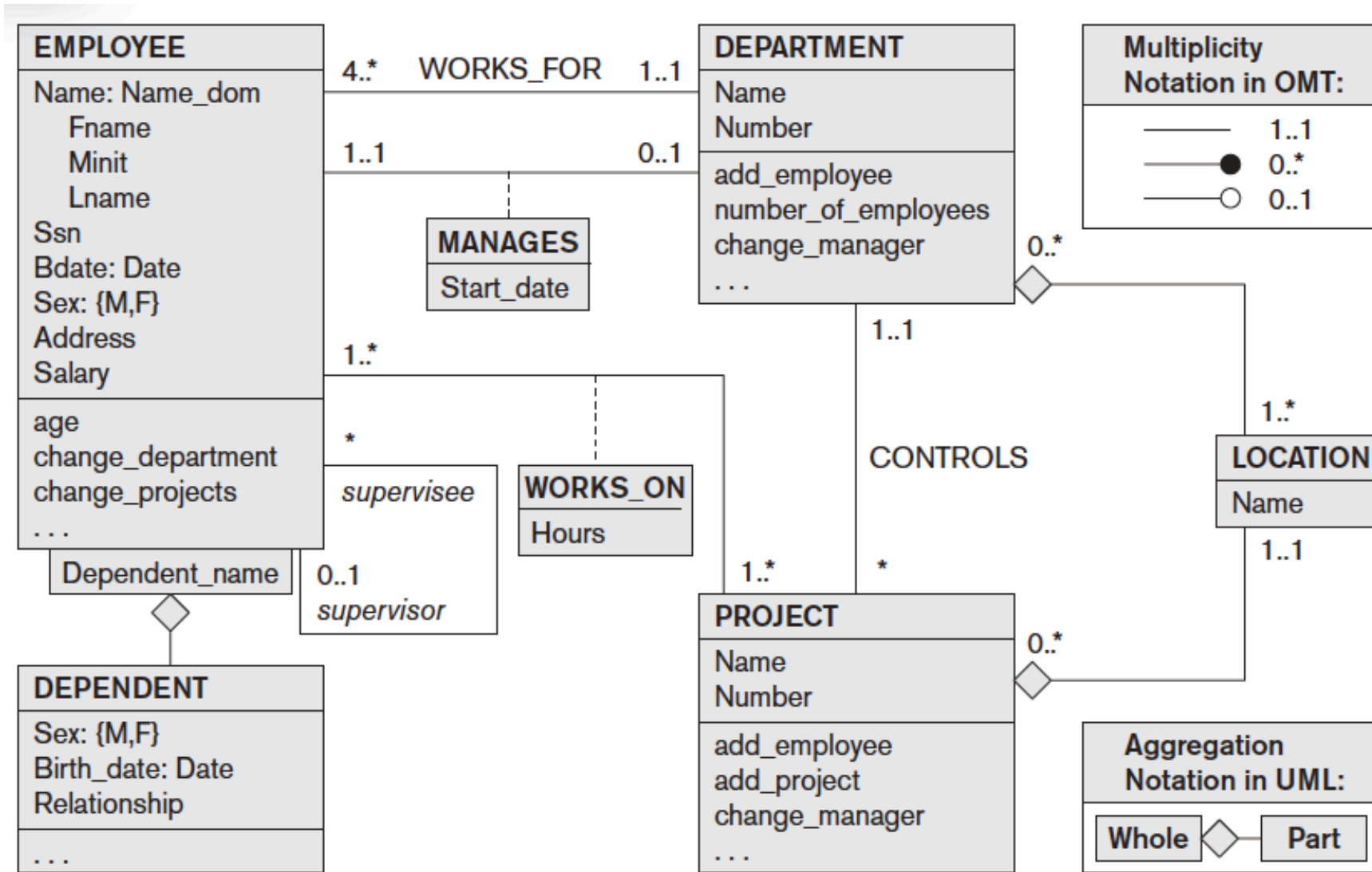


Cardinality Ratio 1: N for $E_1:E_2$ in R



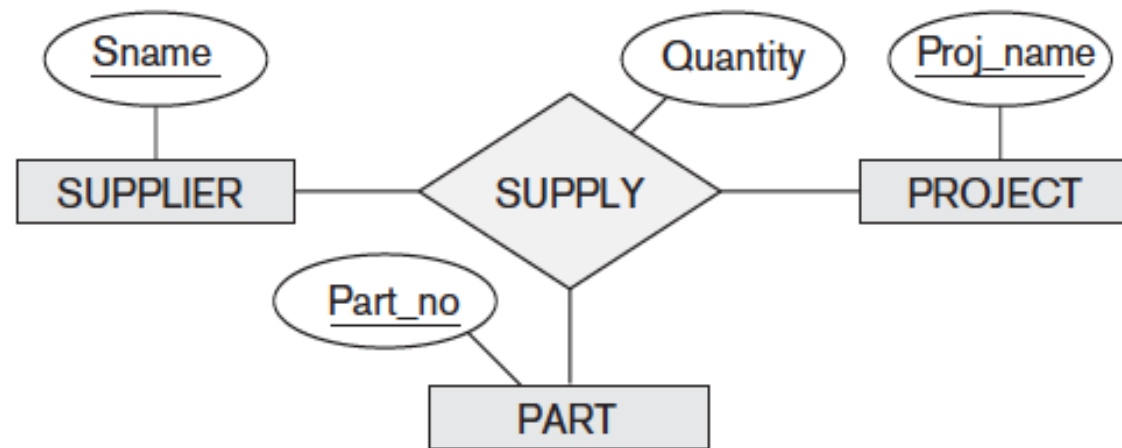
Structural Constraint (min, max)
on Participation of E in R

ER Model – UML Diagram



Source: (Elmasri and Navathe, 2011)

ER Model – Ternary Relationship

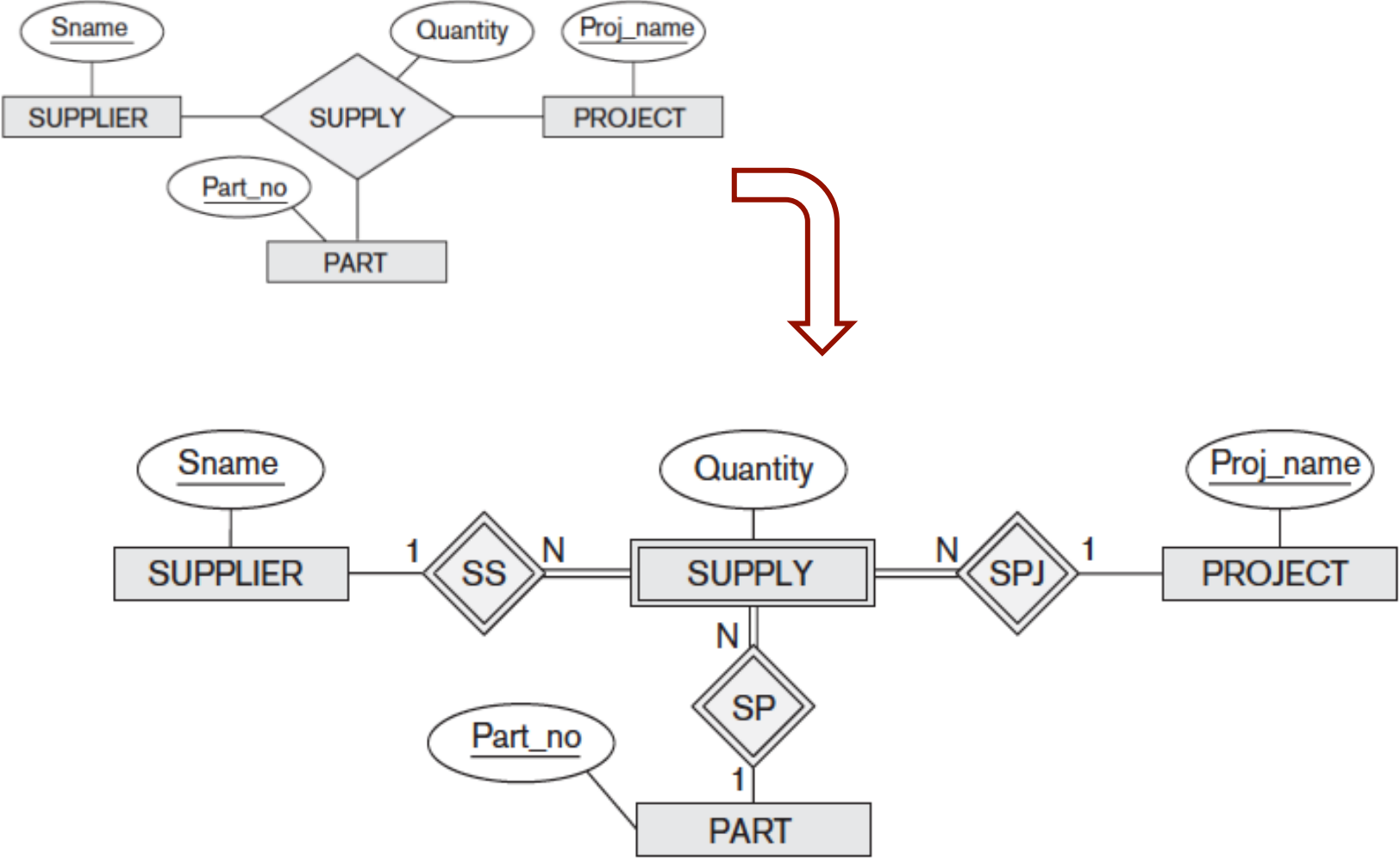


Source: (Elmasri and Navathe, 2011)

ER Model – Ternary Relationship

- ✓ Some database design tools are based on variations of the ER model that permit only binary relationships.
- ✓ A ternary relationship such as SUPPLY must be represented as a weak entity type, with no partial key and with three identifying relationships.

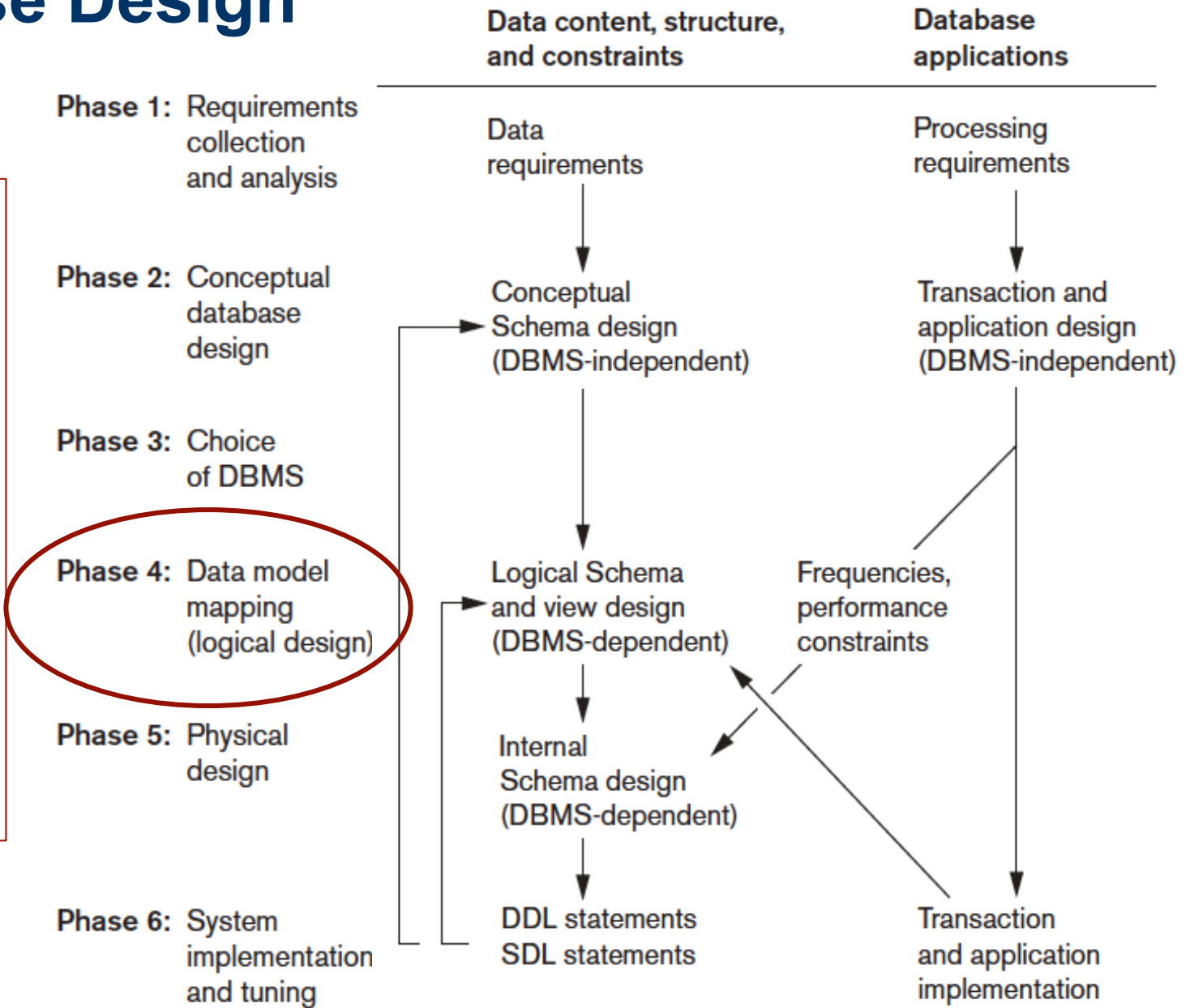
ER Model – Ternary Relationship



Source: (Elmasri and Navathe, 2011)

Database Design

The conceptual schema from the high-level data model used in Phase 2 is **mapped into** the data model of the chosen DBMS.



The Relational Data Model

- First introduced by Ted Codd of IBM Research in 1970 in a classic paper
- Early 1980s: first commercial implementations, such as the Oracle DBMS.
- Current popular relational DBMSs (RDBMSs) include:
 - Commercial: DB2 and Informix Dynamic Server (from IBM), Oracle (from Oracle), Sybase DBMS (from Sybase) and SQLServer and Access (from Microsoft).
 - Open source: MySQL and PostgreSQL

Relational DBMS - RDBMS



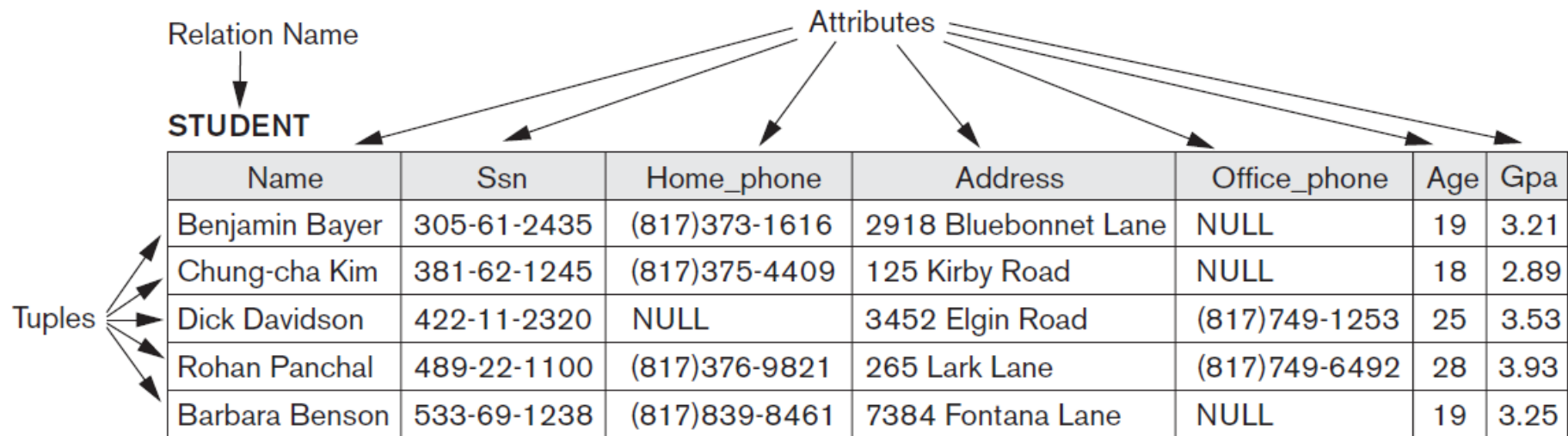
DB2.

Universal Database



The Relational Data Model

- Represents the database as a collection of *relations (table of values)*
- Formal terminology: row => *tuple*, a column header => *attribute*, table => *relation*, data type describing the types of values that can appear in each column => *domain* of possible values.



Relation - Definition

Given the domains D_1, D_2, \dots, D_n that are not necessarily distinct, a relation is defined as:

$$R = \{ (d_1, d_2, \dots, d_n) \mid d_1 \in D_1, d_2 \in D_2, \dots, d_n \in D_n \}$$

- ✓ A set (d_1, d_2, \dots, d_n) of ordered values define a *tupla*
- ✓ A relation is a set of ordered *n-tuplas*, where *n* define the relation *degree*

Relation - Schema x Instances

EMPLOYEE

Fname	Minit	Lname	<u>Ssn</u>	Bdate	Address	Sex	Salary	Super_ssn	Dno
John	B	Smith	123456789	1965-01-09	731 Fondren, Houston, TX	M	30000	333445555	5
Franklin	T	Wong	333445555	1955-12-08	638 Voss, Houston, TX	M	40000	888665555	5
Alicia	J	Zelaya	999887777	1968-01-19	3321 Castle, Spring, TX	F	25000	987654321	4
Jennifer	S	Wallace	987654321	1941-06-20	291 Berry, Bellaire, TX	F	43000	888665555	4
Ramesh	K	Narayan	666884444	1962-09-15	975 Fire Oak, Humble, TX	M	38000	333445555	5
Joyce	A	English	453453453	1972-07-31	5631 Rice, Houston, TX	F	25000	333445555	5
Ahmad	V	Jabbar	987987987	1969-03-29	980 Dallas, Houston, TX	M	25000	987654321	4
James	E	Borg	888665555	1937-11-10	450 Stone, Houston, TX	M	55000	NULL	1

Schema

Instances

Source: (Elmasri and Navathe, 2011)

Relation – Characteristics

- ✓ **Ordering of Tuples in a Relation:** tuples in a relation do not have any particular order.
- ✓ **Ordering of Values within a Tuple:** according to the definition of a relation, an *n-tuple* is an ordered list of *n* values, so the ordering of values in a tuple is important.
- ✓ **Values and NULLs in the Tuples:** each value in a tuple is an atomic value (not divisible). NULL values: values of attributes that may be unknown or may not apply to a tuple.

Relation Model Constraints

- ✓ Constraints materialize the rules in the miniworld that the database represents.
- ✓ Types of constraints:
 - ✓ Domain Constraints
 - ✓ Key Constraints: primary key and unique key
 - ✓ NOT NULL Constraints
 - ✓ Referential Integrity Constraints: foreign key
 - ✓ Semantic Integrity Constraints

Domain Constraints

- The data types associated with domains typically include:
 - Standard numeric data types for integers (such as short integer, integer, and long integer);
 - Real numbers (float and double precision, float);
 - Characters;
 - Booleans;
 - Fixed-length strings and variable-length strings;
 - Date, time, timestamp, and money

Key Constraints

- All tuples in a relation must also be distinct, that is, no two tuples can have the same combination of values for *all* their attributes.
- **Candidate keys:** attributes that have uniqueness constraints, that is, no two distinct tuples can have the same value. A relation can have n candidate keys. Candidate keys are designated as **unique keys**.
- **Primary key:** a candidate key whose values are used to identify tuples in the relation. A relation can have only one primary key.

Key Constraints

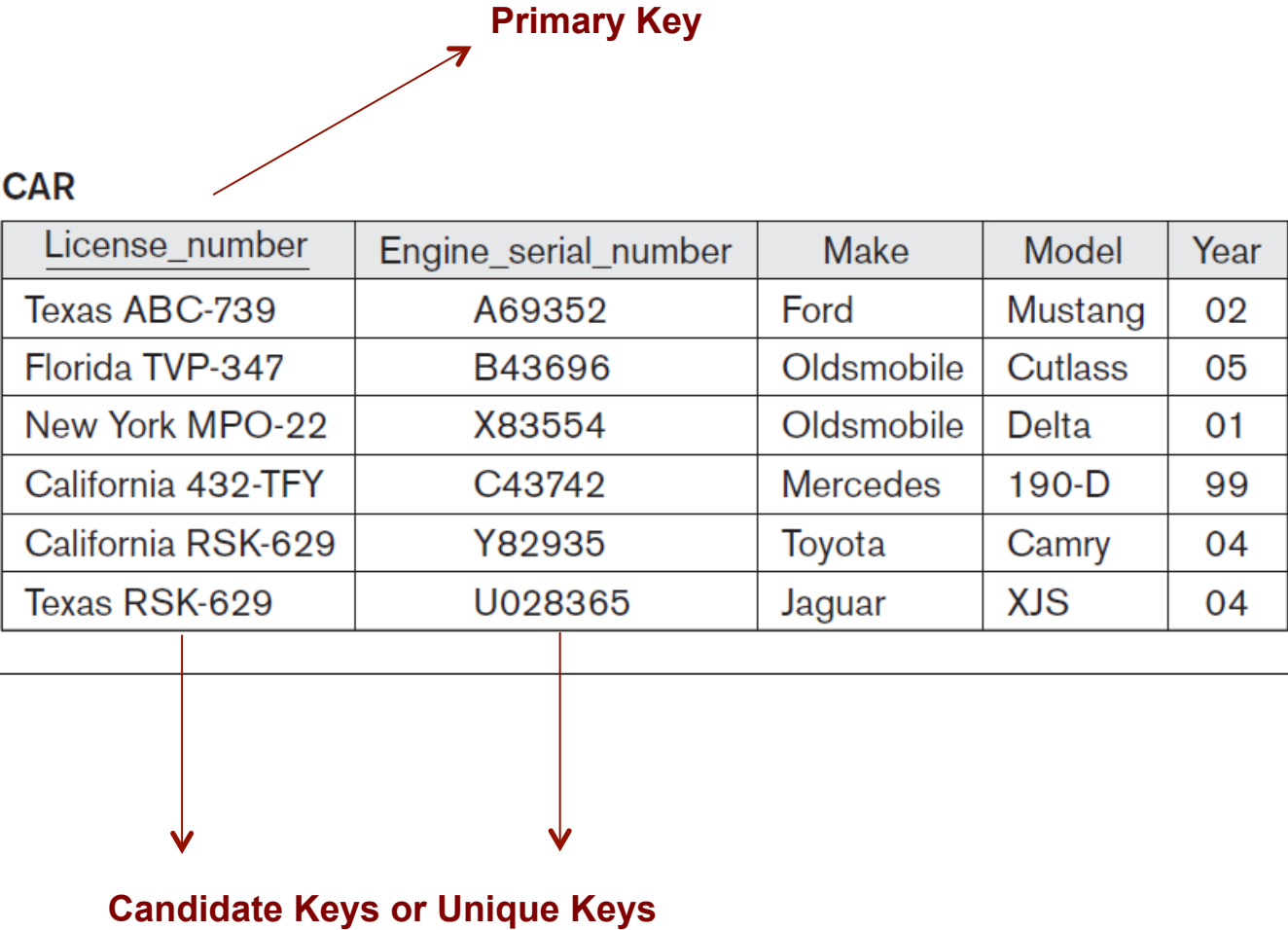


Figure 3.4
The CAR relation, with two candidate keys: License_number and Engine_serial_number.

Source: (Elmasri and Navathe, 2011)

Referential Integrity Constraint

- It is specified between two relations and is used to maintain the consistency among tuples in the two relations.
- **Foreign key:** specify a referential integrity constraint between the two relation schemas R1 and R2.
 - The attributes in FK have the **same domain(s)** as the primary key attributes PK of R2; the attributes FK are said to reference or refer to the relation R2.
 - A value of FK in a tuple t1 of the current state r1(R1) either occurs as a value of PK for some tuple t2 in the current state r2(R2) or is NULL.

EMPLOYEE

Fname	Minit	Lname	<u>Ssn</u>	Bdate	Address	Sex	Salary	Super_ssn	Dno
John	B	Smith	123456789	1965-01-09	731 Fondren, Houston, TX	M	30000	333445555	5
Franklin	T	Wong	333445555	1955-12-08	638 Voss, Houston, TX	M	40000	888665555	5
Alicia	J	Zelaya	999887777	1968-01-19	3321 Castle, Spring, TX	F	25000	987654321	4
Jennifer	S	Wallace	987654321	1941-06-20	291 Berry, Bellaire, TX	F	43000	888665555	4
Ramesh	K	Narayan	666884444	1962-09-15	975 Fire Oak, Humble, TX	M	38000	333445555	5
Joyce	A	English	453453453	1972-07-31	5631 Rice, Houston, TX	F	25000	333445555	5
Ahmad	V	Jabbar	987987987	1969-03-29	980 Dallas, Houston, TX	M	25000	987654321	4
James	E	Borg	888665555	1937-11-10	450 Stone, Houston, TX	M	55000	NULL	1

DEPARTMENT

Dname	<u>Dnumber</u>	Mgr_ssn	Mgr_start_date
Research	5	333445555	1988-05-22
Administration	4	987654321	1995-01-01
Headquarters	1	888665555	1981-06-19

DEPT_LOCATIONS

<u>Dnumber</u>	<u>Dlocation</u>
1	Houston
4	Stafford
5	Bellaire
5	Sugarland
5	Houston

WORKS_ON

<u>Essn</u>	<u>Pno</u>	Hours
123456789	1	32.5
123456789	2	7.5
666884444	3	40.0
453453453	1	20.0
453453453	2	20.0
333445555	2	10.0
333445555	3	10.0
333445555	10	10.0
333445555	20	10.0
999887777	30	30.0
999887777	10	10.0
987987987	10	35.0
987987987	30	5.0
987654321	30	20.0
987654321	20	15.0
888665555	20	NULL

PROJECT

Pname	<u>Pnumber</u>	Plocation	Dnum
ProductX	1	Bellaire	5
ProductY	2	Sugarland	5
ProductZ	3	Houston	5
Computerization	10	Stafford	4
Reorganization	20	Houston	1
Newbenefits	30	Stafford	4

DEPENDENT

<u>Essn</u>	<u>Dependent_name</u>	Sex	Bdate	Relationship
333445555	Alice	F	1986-04-05	Daughter
333445555	Theodore	M	1983-10-25	Son
333445555	Joy	F	1958-05-03	Spouse
987654321	Abner	M	1942-02-28	Spouse
123456789	Michael	M	1988-01-04	Son
123456789	Alice	F	1988-12-30	Daughter
123456789	Elizabeth	F	1967-05-05	Spouse

Primary Keys ?

Unique Keys ?

Foreign Keys ?

Source: (Elmasri and Navathe, 2011)

Foreign Keys

EMPLOYEE

Fname	Minit	Lname	<u>Ssn</u>	Bdate	Address	Sex	Salary	Super_ssn	Dno
-------	-------	-------	------------	-------	---------	-----	--------	-----------	-----

DEPARTMENT

Dname	<u>Dnumber</u>	Mgr_ssn	Mgr_start_date
-------	----------------	---------	----------------

DEPT_LOCATIONS

<u>Dnumber</u>	<u>Dlocation</u>
----------------	------------------

PROJECT

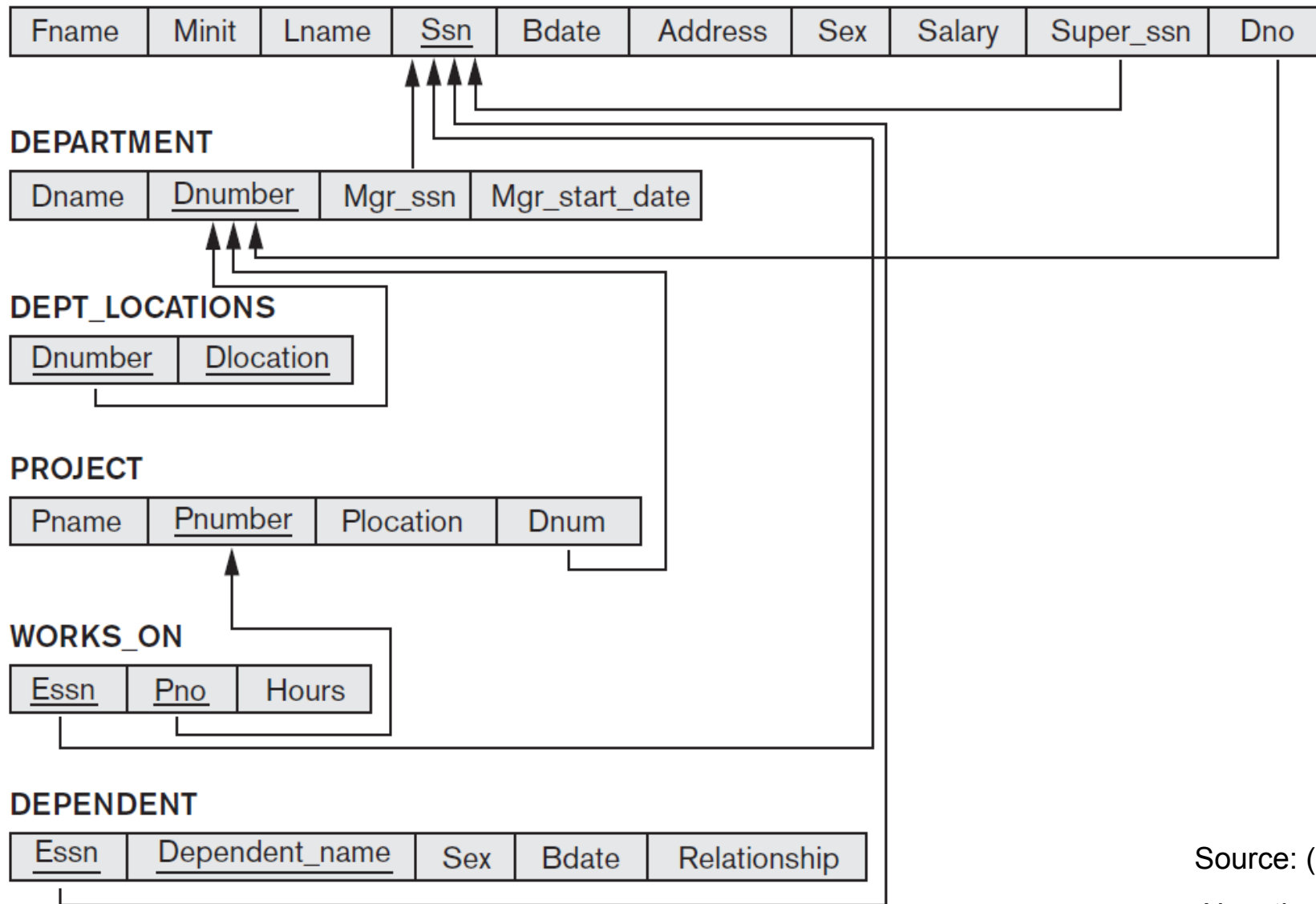
Pname	<u>Pnumber</u>	Plocation	Dnum
-------	----------------	-----------	------

WORKS_ON

<u>Essn</u>	<u>Pno</u>	Hours
-------------	------------	-------

DEPENDENT

<u>Essn</u>	<u>Dependent_name</u>	Sex	Bdate	Relationship
-------------	-----------------------	-----	-------	--------------



Source: (Elmasri and Navathe, 2011)

Foreign Keys

EMPLOYEE

Fname	Minit	Lname	<u>Ssn</u>	Bdate	Address	Sex	Salary	Super_ssn	Dno
-------	-------	-------	------------	-------	---------	-----	--------	-----------	-----

DEPARTMENT

Dname	<u>Dnumber</u>	Mgr_ssn	Mgr_start_date
-------	----------------	---------	----------------

DEPT_LOCATIONS

<u>Dnumber</u>	<u>Dlocation</u>
----------------	------------------

PROJECT

Pname	<u>Pnumber</u>	Plocation	Dnum
-------	----------------	-----------	------

WORKS_ON

<u>Essn</u>	<u>Pno</u>	Hours
-------------	------------	-------

DEPENDENT

<u>Essn</u>	<u>Dependent_name</u>	Sex	Bdate	Relationship
-------------	-----------------------	-----	-------	--------------

Foreign Keys

Source: (Elmasri and Navathe, 2011)

Semantic Integrity Constraints

- Example: *“the salary of an employee should not exceed the salary of the employee’s supervisor and the maximum number of hours an employee can work on all projects per week is 56”*
- Such constraints can be specified and enforced within the application programs that update the database, or by using a general-purpose constraint specification language.
- Examples: triggers and assertions. In SQL: CREATE ASSERTION and CREATE TRIGGER

Relational Model – Operations

- **Insert:** provides a list of attribute values for a new tuple t that is to be inserted into a relation R .
 - *Example:* Insert \langle 'Cecilia', 'F', 'Kolonsky', NULL, '1960-04-05', '6357 Windy Lane, Katy,TX', F, 28000, NULL, 4 \rangle into EMPLOYEE.
 - *Result:* This insertion violates the entity integrity constraint (NULL for the primary key Ssn), so it is rejected.

Relational Model – Operations

- **Delete:** remove tuples of a relation.
 - ✓ *Example:* Delete the EMPLOYEE tuple with Ssn = '999887777'.
 - ✓ *Result:* This deletion is not acceptable, because there are tuples in WORKS_ON that refer to this tuple. Hence, if the tuple in EMPLOYEE is deleted, referential integrity violations will result.

Relational Model – Operations

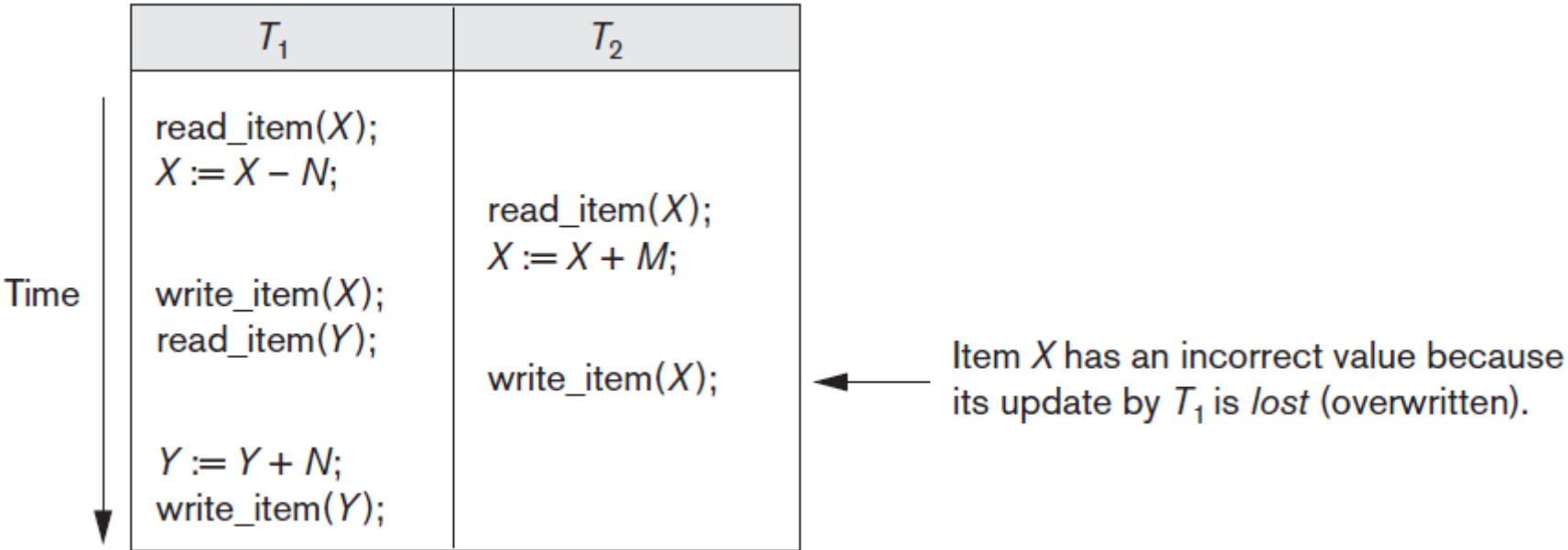
- **Update (or Modify):** change the values of one or more attributes in a tuple (or tuples) of some relation R.
 - ✓ *Example:* Update the Dno of the EMPLOYEE tuple with Ssn = '999887777' to 7.
 - ✓ *Result:* Unacceptable, because it violates referential integrity.

Transaction

- **A transaction** is an executing program that forms a logical unit of database processing.
- It includes one or more database access operations—these can include insertion, deletion, modification, or retrieval operations.
- End of the transaction: database in a valid or consistent state
- Transactions submitted by various users may execute concurrently and may access and update the same database items.
- Concurrency control and recovery mechanisms are necessary

Problems of concurrent execution

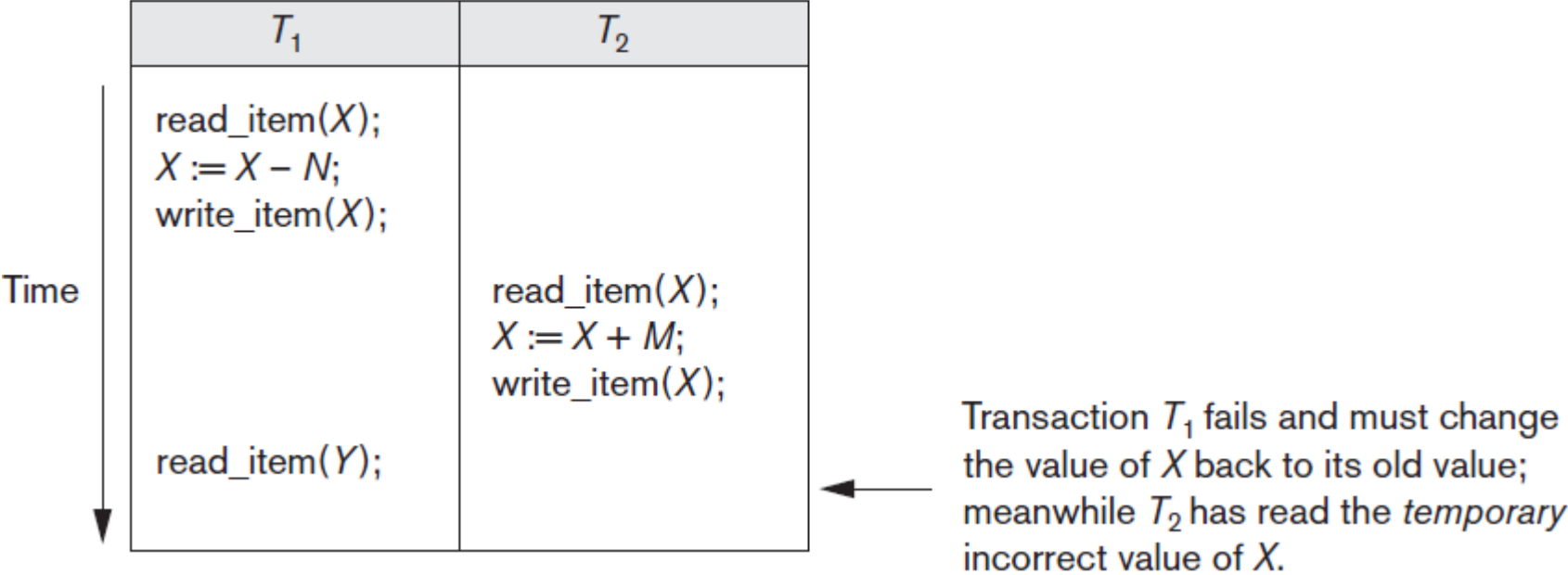
Two transactions: T1 and T2



Source: (Elmasri and Navathe, 2011)

Problems of concurrent execution

Two transactions: T1 and T2



Source: (Elmasri and Navathe, 2011)

Transaction

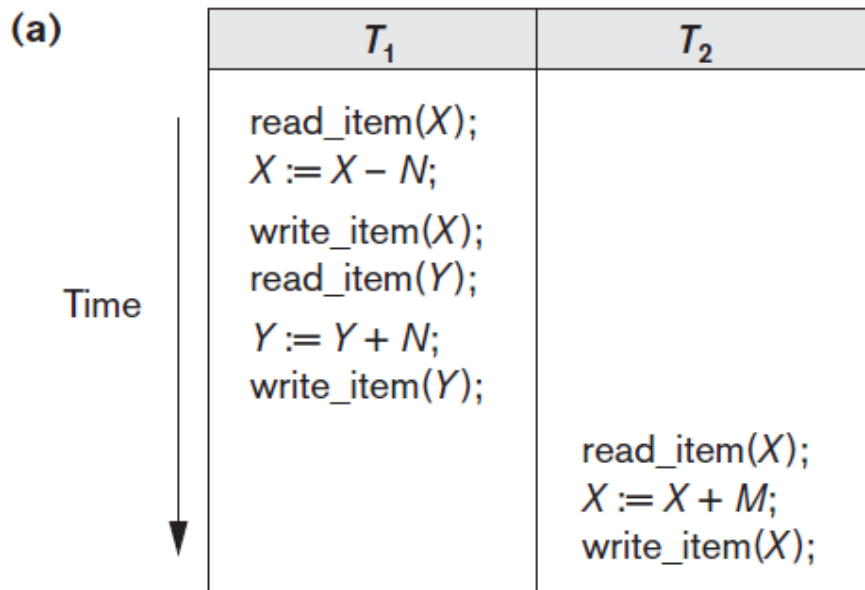
- A transaction is an atomic unit of work that should either be completed in its entirety or not done at all.
- For recovery purposes, the system needs to keep track of when each transaction starts, terminates, and commits or aborts:
 - BEGIN_TRANSACTION
 - END_TRANSACTION
 - COMMIT_TRANSACTION
 - ROLLBACK (or ABORT)

Transaction – ACID properties

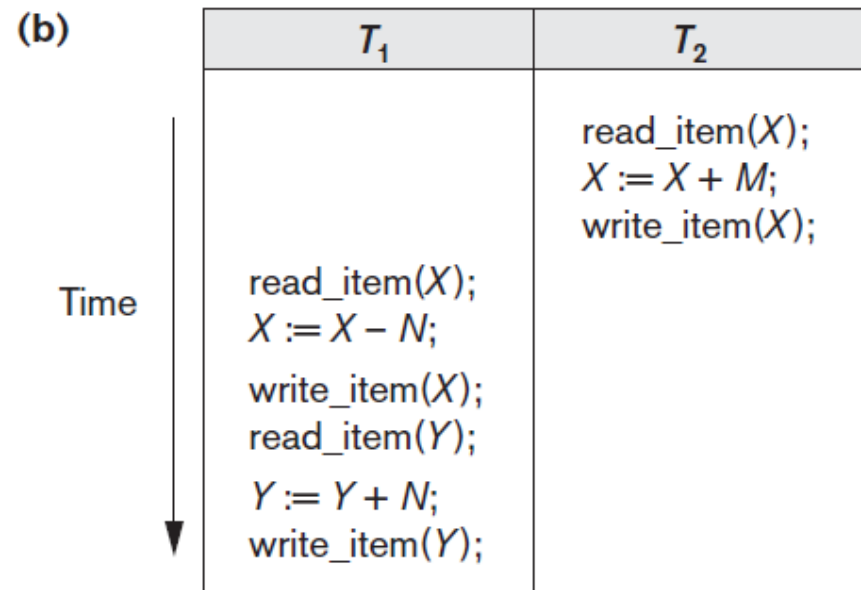
- **Atomicity:** A transaction is an atomic unit of processing; it should either be performed in its entirety or not performed at all.
- **Consistency preservation:** if a transaction is completely executed from beginning to end without interference from other transactions, it should take the database from one consistent state to another.
- **Isolation:** The execution of a transaction should not be interfered with by any other transactions executing concurrently
- **Durability** or permanency. The changes applied to the database by a committed transaction must persist in the database. These changes must not be lost because of any failure.

Transaction – Serial Schedule

Serial schedules involving transactions T1 and T2. (a) Serial schedule A: T1 followed by T2. (b) Serial schedule B: T2 followed by T1.



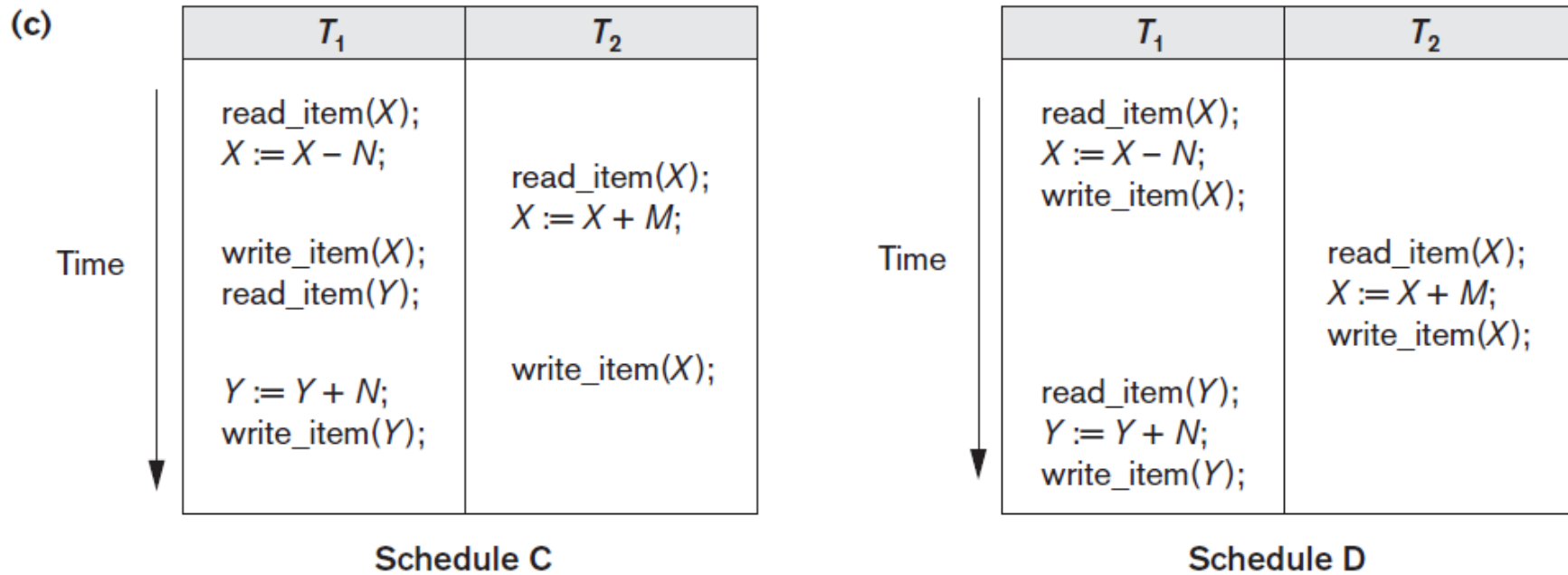
Schedule A



Schedule B

Transaction – Nonserial Schedule

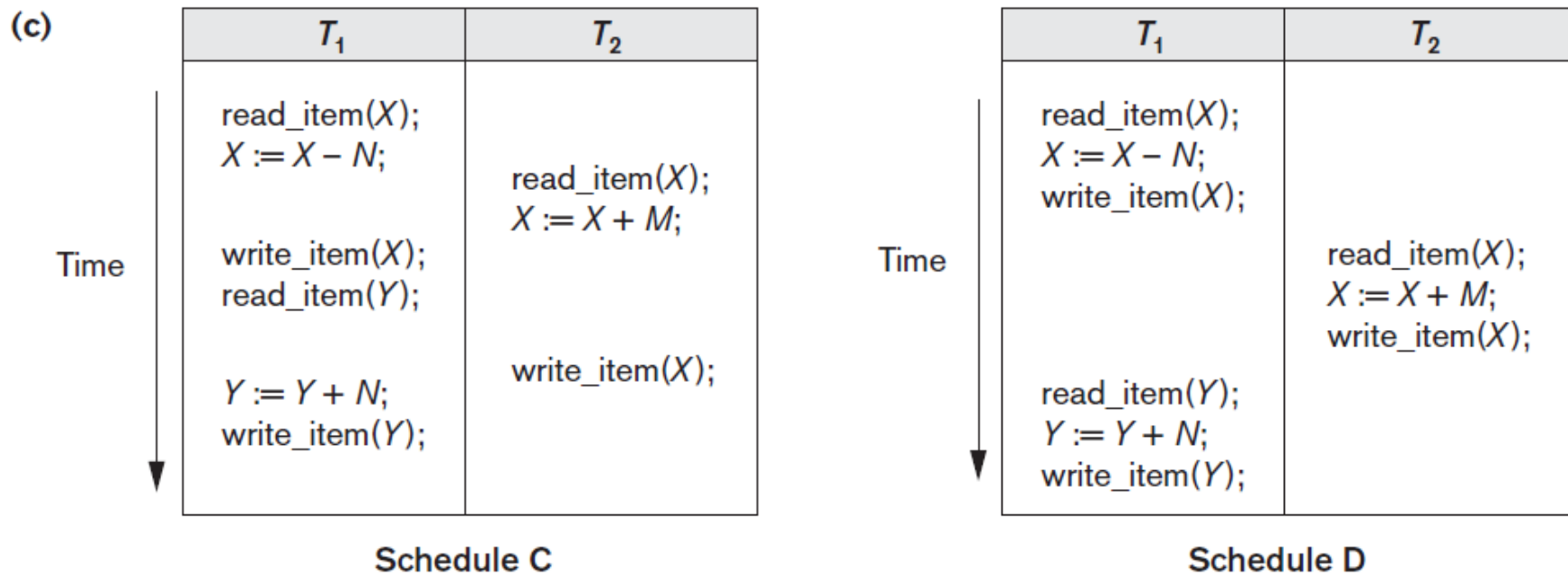
(c) Two nonserial schedules C and D with interleaving of operations.



Correct results?

Transaction – Nonserial Schedule

(c) Two nonserial schedules C and D with interleaving of operations.



C: erroneous result (*lost update problem*) => T2 reads the value of X before it is changed by T1.

D: correct result

SQL: Structured Query Language

- A standard (ISO) for relational databases.
- Based on the *relational algebra*
- *Higher-level declarative language* interface: user only specifies what the result is to be, leaving the actual optimization and decisions on how to execute the query to the DBMS.
- Statements for:
 - ✓ data definitions, queries, and updates: DDL and DML
 - ✓ defining views on the database
 - ✓ specifying security and authorization
 - ✓ defining integrity constraints, and
 - ✓ specifying transaction controls.

SQL

SQL-DDL (Data Definition Language)

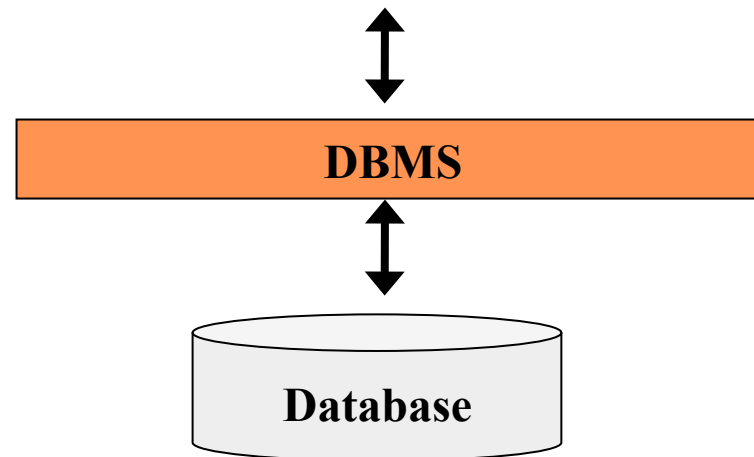
```
CREATE DATABASE Test
```

```
CREATE TABLE States(  
NAME    VARCHAR(100)  
UF      VARCHAR(2)  
POP     NUMBER(10,10))
```

SQL-DML (Data Manipulation Language)

```
INSERT INTO States  
VALUES ('Minas Gerais',  
'MG', 9999)
```

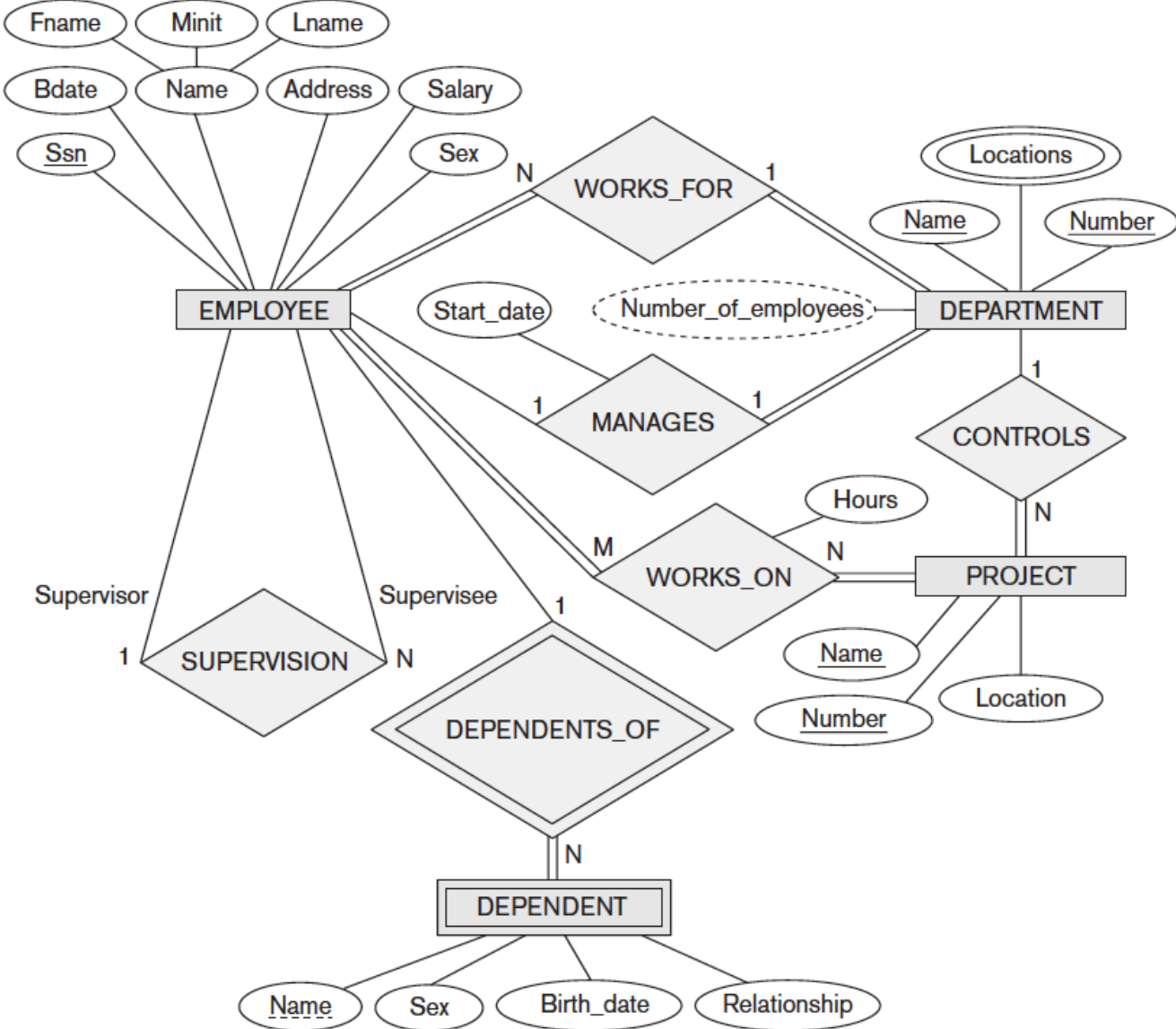
```
SELECT *  
FROM States  
WHERE UF = 'MG'
```



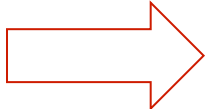
SQL – Some Commands

Commands	Description	Type
<i>select</i>	Select data	DML
<i>insert, update, delete</i>	Add, modify and remove data	DML
<i>commit, rollback</i>	Transaction controls	DDL
<i>create, alter, drop</i>	create, alter and eliminate schemas and tables	DDL

From ER Model To Relational Model



ER Data Model to ...



From ER Model To Relational Model

Relational
Model


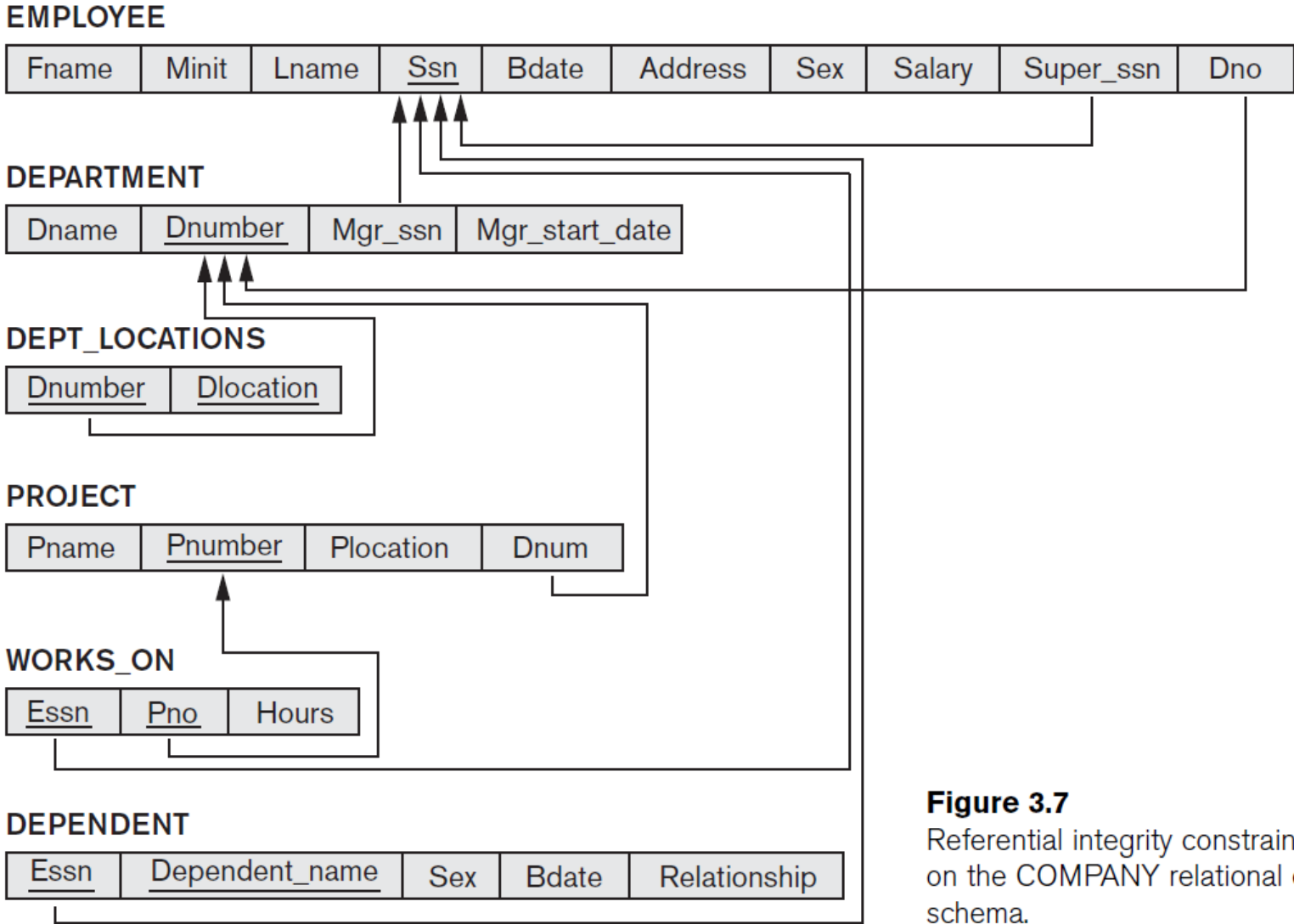



Figure 3.7
Referential integrity constraint on the COMPANY relational c schema.

ER Model To Relational Model

Step 1: Mapping of Regular Entity Types. For each regular entity E, create a relation R that includes all the simple attributes of E.

Example: EMPLOYEE, DEPARTMENT, PROJECT

Step 2: Mapping of Weak Entity Types. For each weak entity W with owner entity E, create a relation R and include all simple attributes of W as attributes of R. In addition, include as foreign key attributes of R, the primary key attribute(s) of E.

Example: DEPENDENT

ER Model To Relational Model

Step 3: Mapping of Binary 1:1 Relationship Types: identify the relations S and T that correspond to the relationship and choose one approach:

(1) **Foreign key approach:** Choose one of the relations, for example S, and include as a foreign key in S the primary key of T.

(2) **Merged relation approach:** Merge the two entities into a single relation.

(3) **Cross-reference or relationship relation approach:** set up a third relation R for the purpose of cross-referencing the primary keys of the two relations S and T representing the entities.

ER Model To Relational Model

Example: (Approach 1): include the primary key of the EMPLOYEE as foreign key in the DEPARTMENT (Mgr_ssn). Also include the simple attribute Start_date of the MANAGES relationship (Mgr_start_date).

ER Model To Relational Model

Step 4: Mapping of Binary 1:N Relationship Types: identify the relation S that represents the participating entity at the N-side of the relationship. Include as foreign key in S the primary key of the relation T.

Examples:

1. WORKS_FOR => primary key Dnumber of the DEPARTMENT as foreign key in the EMPLOYEE (Dno).
2. SUPERVISION => primary key of the EMPLOYEE as foreign key in the EMPLOYEE (Super_ssn).
3. CONTROLS => foreign key attribute Dnum of PROJECT, which references the primary key Dnumber of the DEPARTMENT.

ER Model To Relational Model

Step 5: Mapping of Binary M:N Relationship Types: For each binary M:N relationship type R, create a new relation S to represent R. Include as foreign key attributes in S the primary keys of the relations that represent the participating entity types; their combination will form the primary key of S. Also include any simple attributes of the M:N relationship as attributes of S.

Example: relationship WORKS_ON => relation WORKS_ON

ER Model To Relational Model

Step 6: Mapping of Multivalued Attributes: For each multivalued attribute A, create a new relation R that include an attribute corresponding to A, plus the primary key attribute K — as a foreign key in R — of the relation that represents the entity type or relationship type that has A as a multivalued attribute.

Example: create a relation DEPT_LOCATIONS. The attribute Dlocation represents the multivalued attribute LOCATIONS of DEPARTMENT, while Dnumber—as foreign key—represents the primary key of the DEPARTMENT relation.

ER Model To Relational Model

Step 7: Mapping of N-ary Relationship Types. For each n-ary relationship type R, where $n > 2$, create a new relation S to represent R. Include as foreign key attributes in S the primary keys of the relations that represent the participating entity types. Also include any simple attributes of the n-ary relationship type as attributes of S.

ER Model To Relational - Summary

ER MODEL

Entity type

1:1 or 1:N relationship type

M:N relationship type

n -ary relationship type

Simple attribute

Composite attribute

Multivalued attribute

Value set

Key attribute

RELATIONAL MODEL

Entity relation

Foreign key (or *relationship* relation)

Relationship relation and *two* foreign keys

Relationship relation and n foreign keys

Attribute

Set of simple component attributes

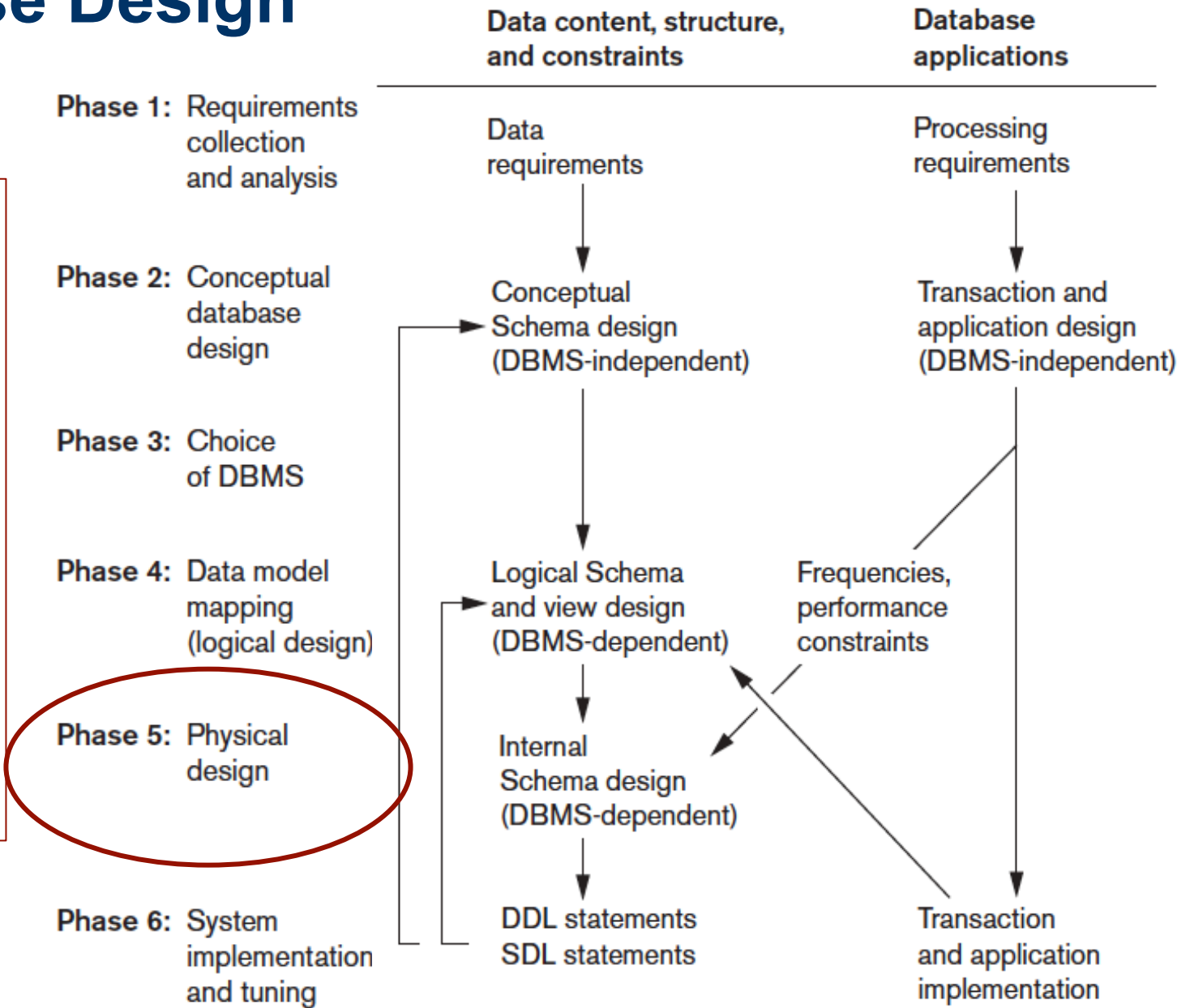
Relation and foreign key

Domain

Primary (or secondary) key

Database Design

Specifications for the stored database in terms of physical file storage structures, buffer, and indexes.



Database Design

Database and application programs are implemented, tested, and eventually deployed for service.

It can result in conceptual, logical or internal (physical) schema changes

