

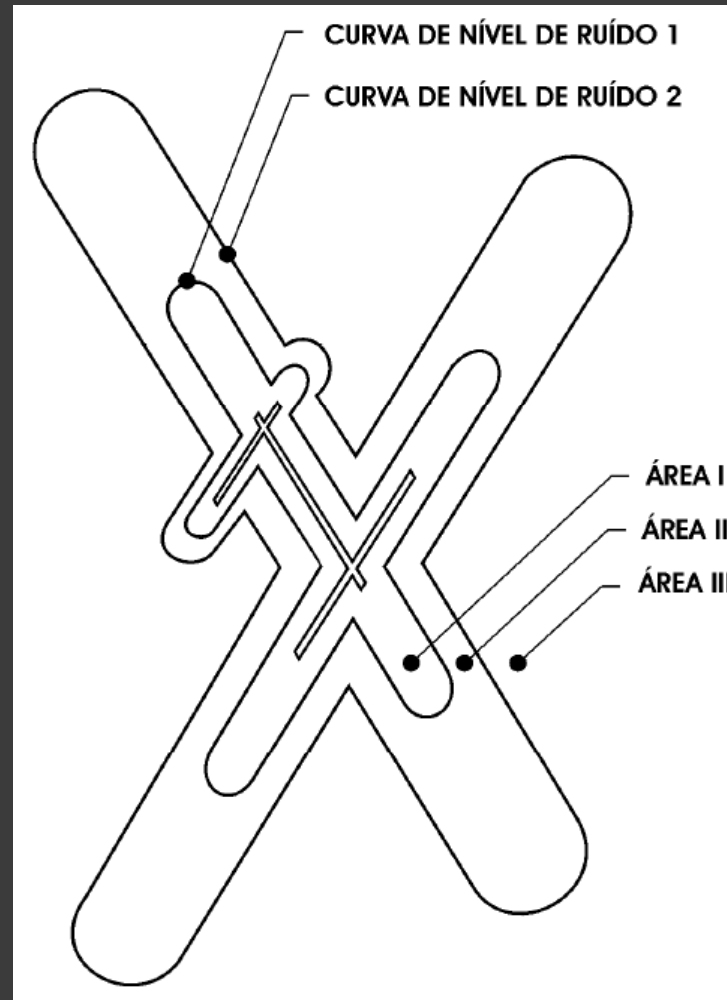
UTILIZAÇÃO DE BANCO DE DADOS GEOGRÁFICOS NO PLANEJAMENTO URBANO DO ENTORNO DE AEROPORTOS

Gustavo Sobreiro Santos
PGEIA-T - ITA

INTRODUÇÃO

- Portaria nº 1141 (Plano Básico de Zoneamento de Ruído, etc.)
- Lei de uso e ocupação do solo (Lei de zoneamento)

INTRODUÇÃO



MATERIAIS UTILIZADOS

- PostgreSQL/PostGIS
- OpenJump + Plugins
- Shape file do Zoneamento de SJC
- Apache + Mapserver

DESENVOLVIMENTO



DESENVOLVIMENTO

The image shows a screenshot of a PostgreSQL query editor window. The window title is "Query - bd_geografico em postgres@localhost:5432 *". The menu bar includes "Arquivo", "Editar", "Consulta", "Favoritos", "Macros", "Visualizar", and "Ajuda". The toolbar contains various icons for file operations and execution. The main text area contains the following SQL code:

```
Create Table curvas (gid integer, nome varchar, the_geom GEOMETRY);
insert into curvas values(1,'curva1','LINESTRING(409925.870 7432826.029,413619.969 7429190.240)');
insert into curvas values(2,'curva2','LINESTRING(414079.826 7428737.370,409478.386 7433266.865)');
```

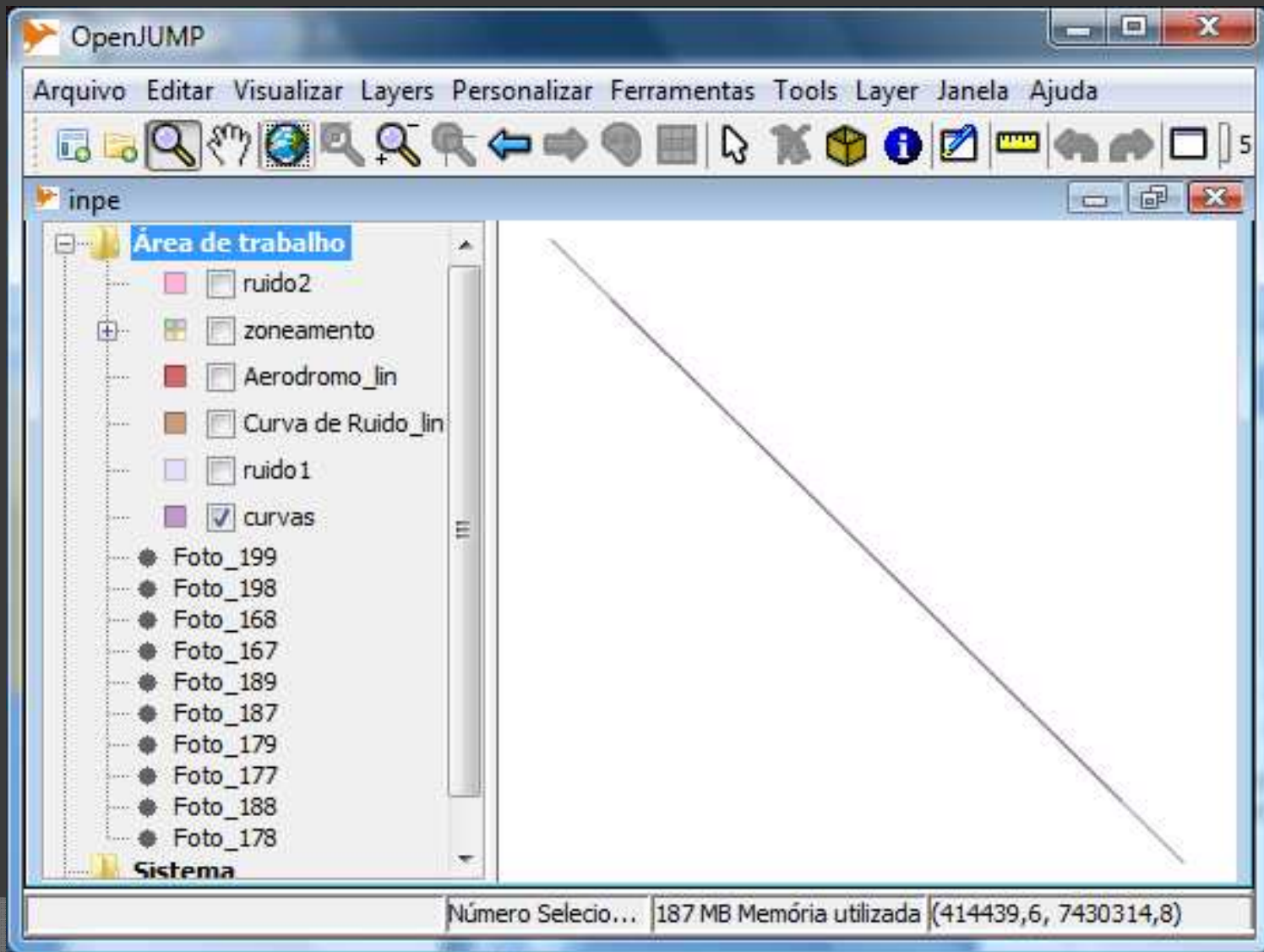
Below the main text area is a "Painel de saída" (Output Panel) with tabs for "Saída de Dados", "Explain", "Mensagens", and "Histórico". The "Saída de Dados" tab is selected, but it is currently empty. The status bar at the bottom shows "pronto", "Unix", and "Lin 3 Col 101 Ch 270".

DESENVOLVIMENTO

Server:	<input type="text" value="localhost"/>	Port:	<input type="text" value="5432"/>
Database:	<input type="text" value="bd_geografico"/>	Table:	<input type="text" value="curvas"/>
Username:	<input type="text" value="postgres"/>	Password:	<input type="password" value="●●●●●●"/>

Formatar:

DESENVOLVIMENTO

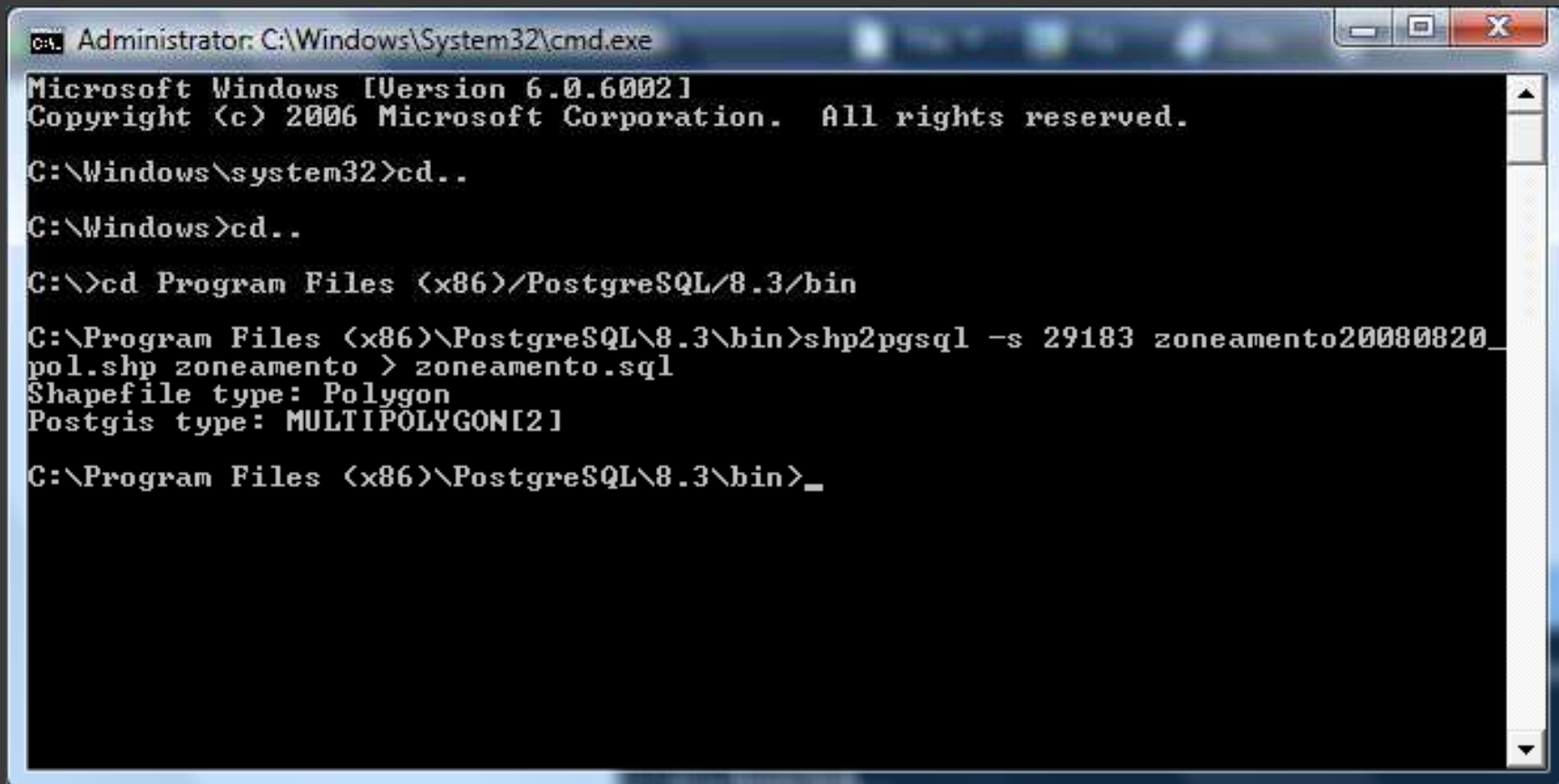


DESENVOLVIMENTO

- SELECT ST_Buffer(curvas.the_geom, 600) from curvas
- WHERE nome ='curva2';



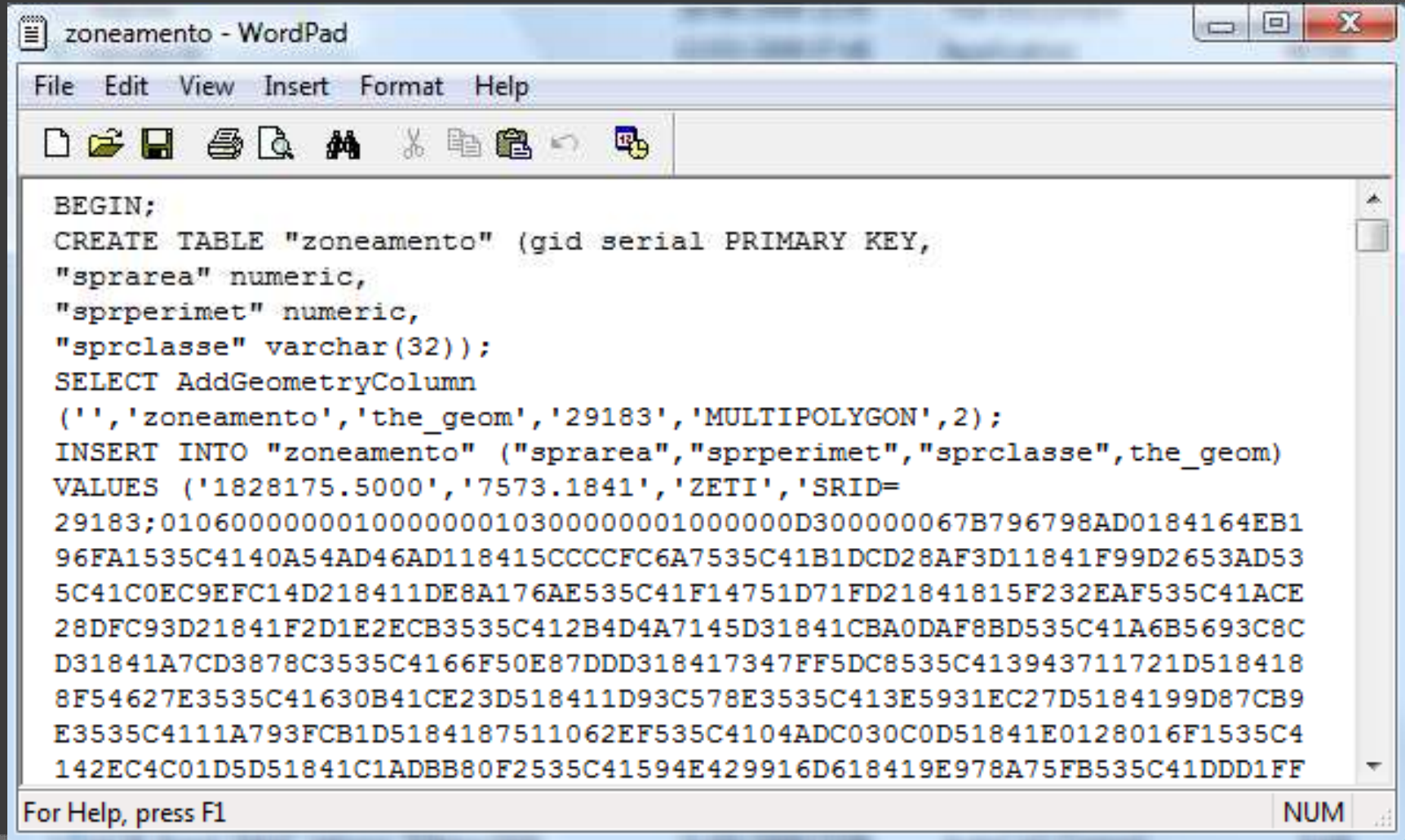
DESENVOLVIMENTO



```
Administrator: C:\Windows\System32\cmd.exe
Microsoft Windows [Version 6.0.6002]
Copyright (c) 2006 Microsoft Corporation. All rights reserved.

C:\Windows\system32>cd..
C:\Windows>cd..
C:\>cd Program Files (x86)/PostgreSQL/8.3/bin
C:\Program Files (x86)\PostgreSQL\8.3\bin>shp2pgsql -s 29183 zoneamento20080820_
pol.shp zoneamento > zoneamento.sql
Shapefile type: Polygon
Postgis type: MULTIPOLYGON[2]
C:\Program Files (x86)\PostgreSQL\8.3\bin>_
```

DESENVOLVIMENTO

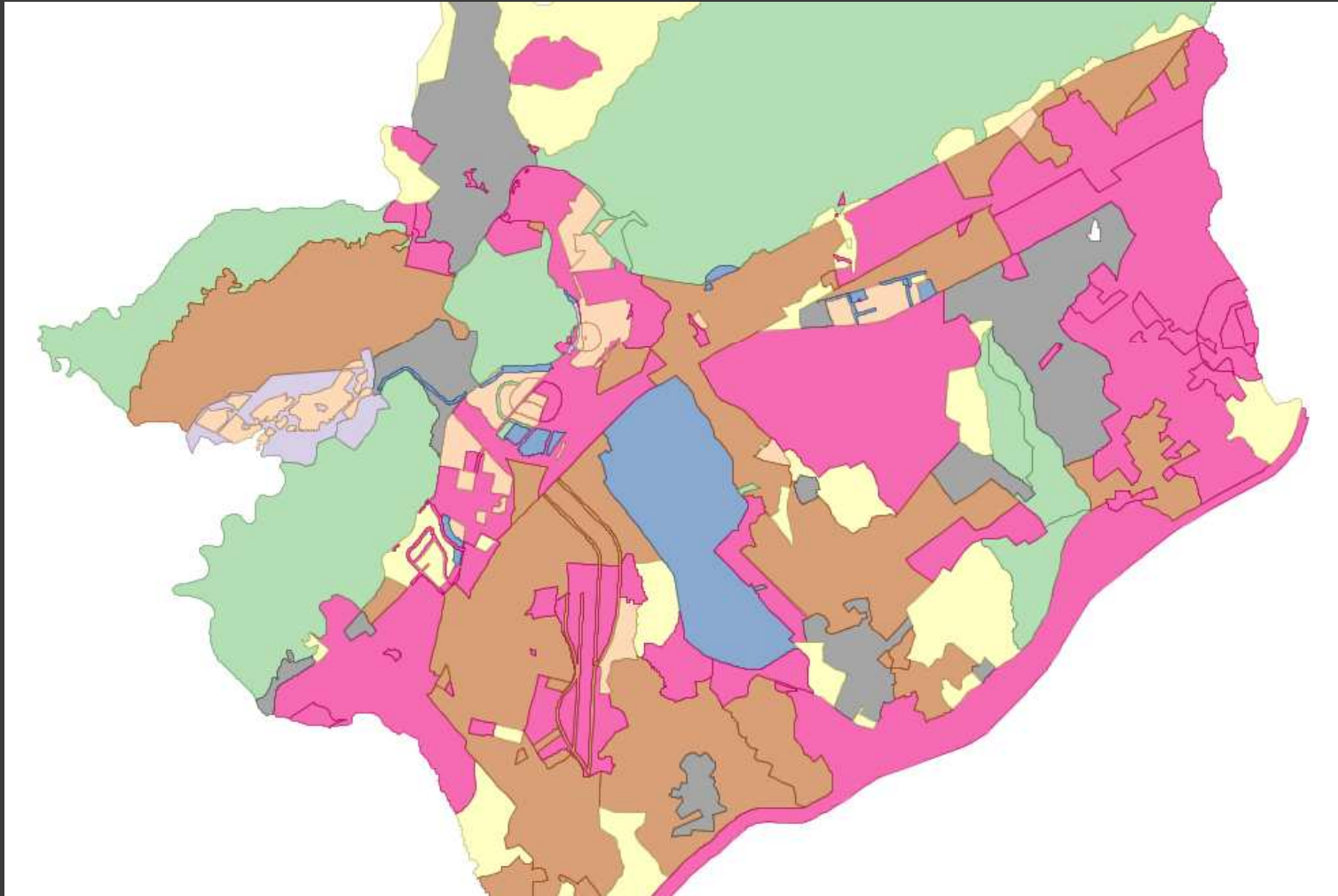


```
BEGIN;  
CREATE TABLE "zoneamento" (gid serial PRIMARY KEY,  
"sprarea" numeric,  
"sprperimet" numeric,  
"sprclasse" varchar(32));  
SELECT AddGeometryColumn  
(', 'zoneamento', 'the_geom', '29183', 'MULTIPOLYGON', 2);  
INSERT INTO "zoneamento" ("sprarea", "sprperimet", "sprclasse", the_geom)  
VALUES ('1828175.5000', '7573.1841', 'ZETI', 'SRID=  
29183;010600000001000000010300000001000000D300000067B796798AD0184164EB1  
96FA1535C4140A54AD46AD118415CCCCFC6A7535C41B1DCD28AF3D11841F99D2653AD53  
5C41C0EC9EFC14D218411DE8A176AE535C41F14751D71FD21841815F232EAF535C41ACE  
28DFC93D21841F2D1E2ECB3535C412B4D4A7145D31841CBA0DAF8BD535C41A6B5693C8C  
D31841A7CD3878C3535C4166F50E87DDD318417347FF5DC8535C413943711721D518418  
8F54627E3535C41630B41CE23D518411D93C578E3535C413E5931EC27D5184199D87CB9  
E3535C4111A793FCB1D5184187511062EF535C4104ADC030C0D51841E0128016F1535C4  
142EC4C01D5D51841C1ADBB80F2535C41594E429916D618419E978A75FB535C41DDD1FF
```

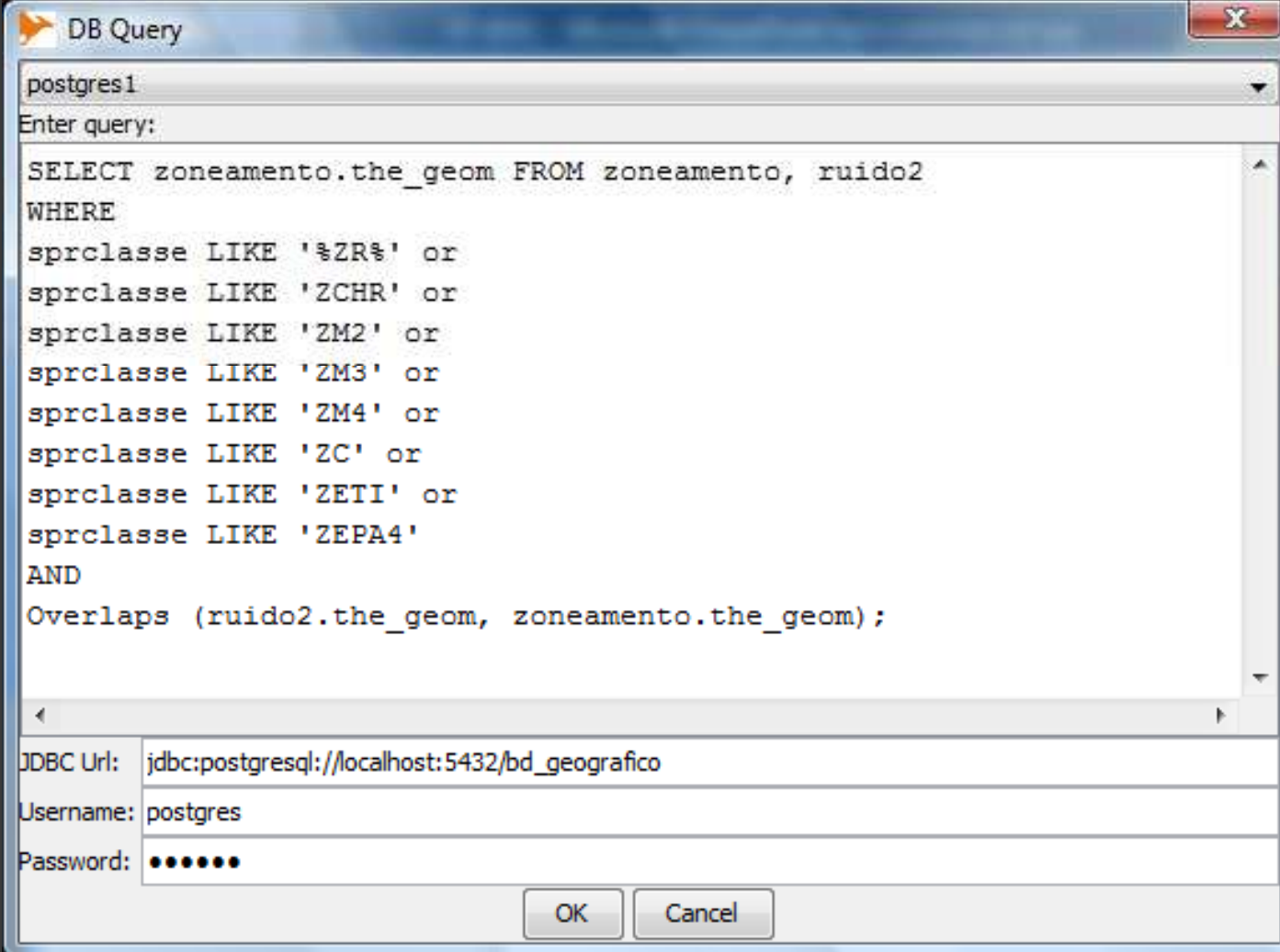
For Help, press F1

NUM

DESENVOLVIMENTO



DESENVOLVIMENTO



DB Query

postgres1

Enter query:

```
SELECT zoneamento.the_geom FROM zoneamento, ruido2
WHERE
sprclasse LIKE '%ZR%' or
sprclasse LIKE 'ZCHR' or
sprclasse LIKE 'ZM2' or
sprclasse LIKE 'ZM3' or
sprclasse LIKE 'ZM4' or
sprclasse LIKE 'ZC' or
sprclasse LIKE 'ZETI' or
sprclasse LIKE 'ZEPA4'
AND
Overlaps (ruído2.the_geom, zoneamento.the_geom);
```

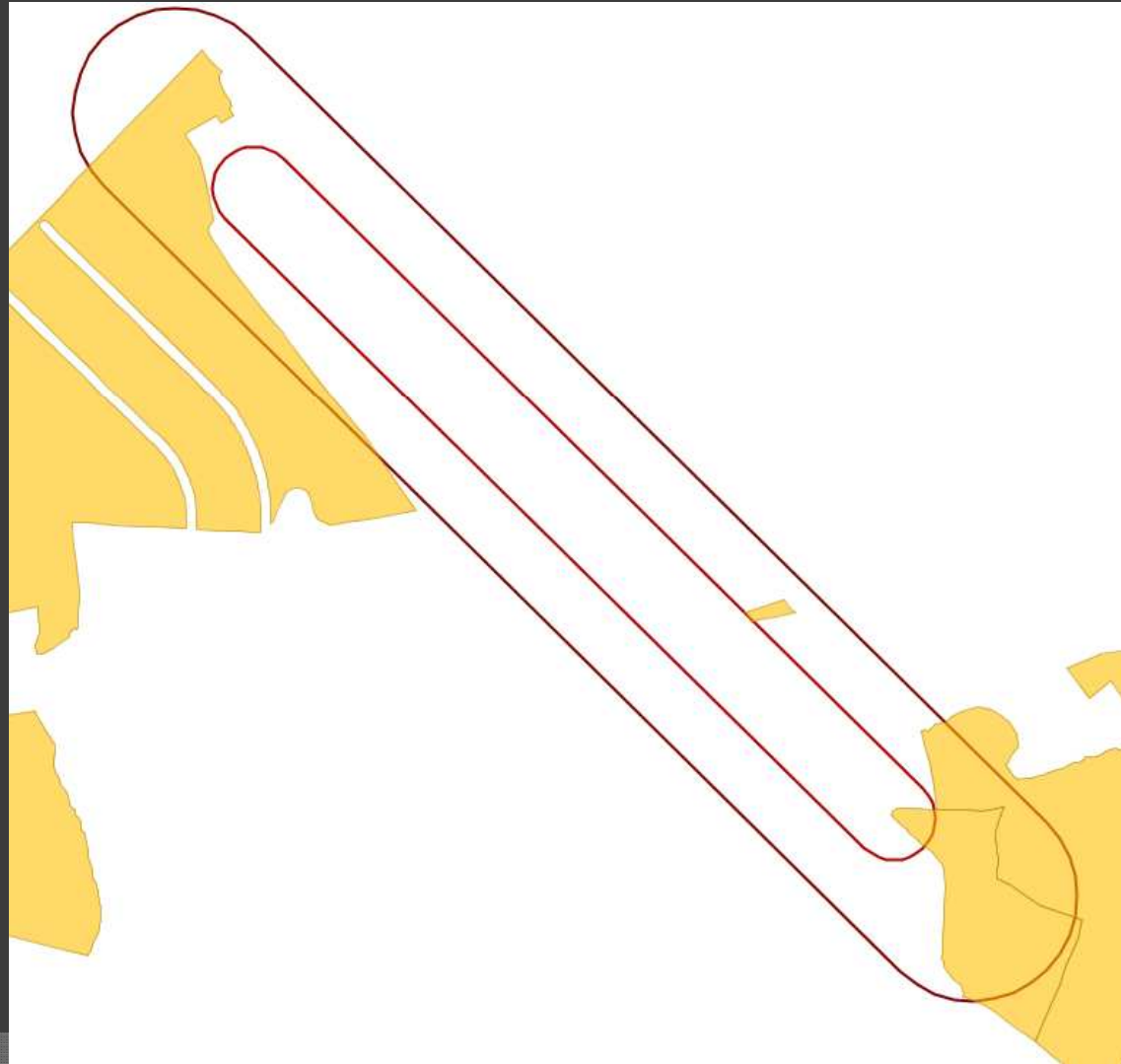
JDBC Url: jdbc:postgresql://localhost:5432/bd_geografico

Username: postgres

Password: ●●●●●●

OK Cancel

DESENVOLVIMENTO



ARQUIVOS .HTML .MAP

```
<html>
<head>
<title> Trabalho Prático </title>
</head>
<body>
<h1> Plano básico de curvas de ruído - SJC </h1>
<div>
<div align="center">

</div>
</body>
</html>
```

ARQUIVOS .HTML .MAP

MAP

IMAGETYPE PNG

EXTENT 407760 7427080 416704
7434717

SIZE 800 800

SHAPEPATH "/OSGeo4w/Aula/"

IMAGECOLOR 255 255 255

NAME ruido1

DATA ruido1

STATUS OFF

TYPE POLYGON

CLASS

NAME "ruido"

STYLE

OUTLINECOLOR 240 0 0

WIDTH 2

END

LAYER

NAME foto10

DATA Foto_178.tif

STATUS OFF

TYPE Raster

END

LAYER

NAME zonas

DATA zonasresidenciais

STATUS OFF

TYPE POLYGON

TRANSPARENCY 60

CLASS

NAME "ruido2"

STYLE

COLOR 0 70 0

OUTLINECOLOR 0 0 0

END

RESULTADO

Trabalho Prático - Windows Internet Explorer

http://localhost/Aula/

especura

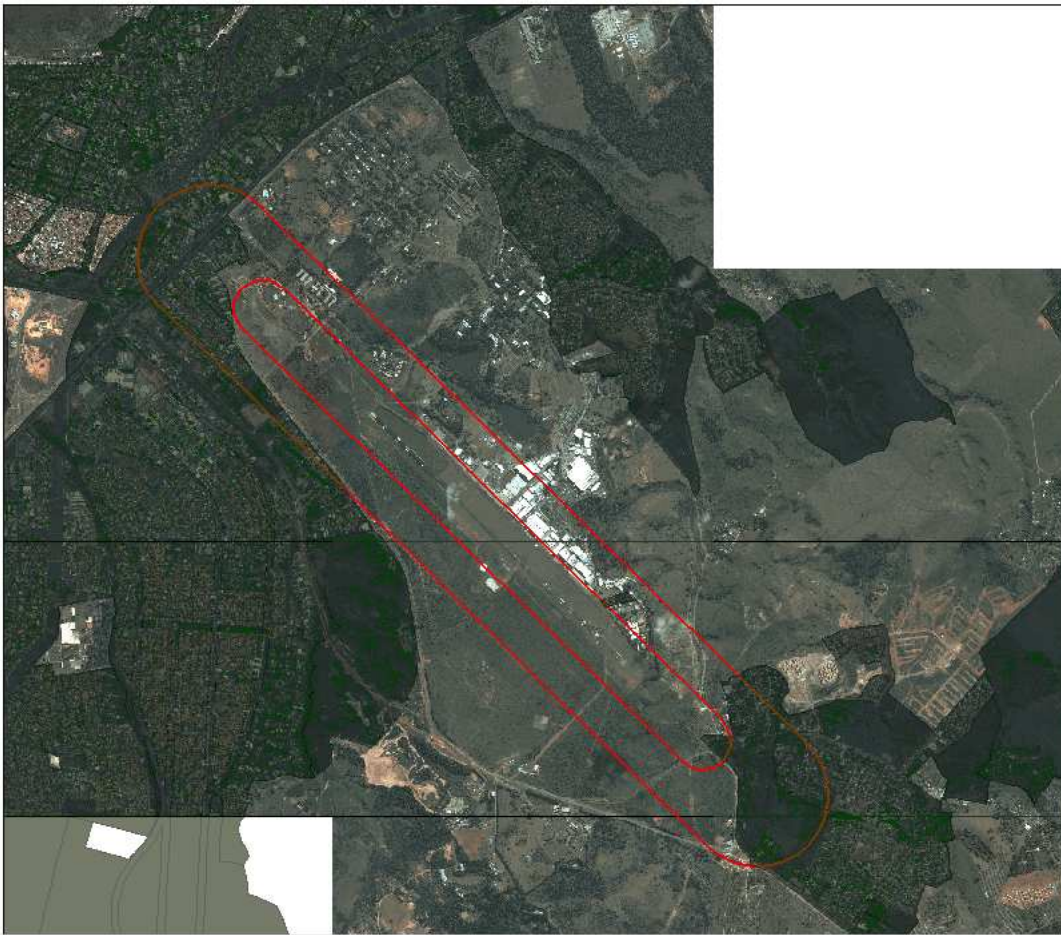
Favorites

Trabalho Prático

STYLE — MapServer 5.6.5 ...

Page Safety Tools

Plano básico de curvas de ruído - SJC



Done

Local intranet | Protected Mode: Off

100%

Aula coord_Aero - ... 6 Adobe Rea... Trabalho Práti... Microsoft Po... Artigo_DSitrae... OpenJUMP TextPad - [C:\... EN < 12:16