

General Theory of Change

Thomas, Giovanna, Angela, Gilberto

Change at a Political Level

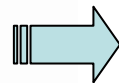
R1. Splitting existing State → two States

R2. Convert existing State → new State with same borders

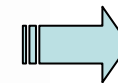
R3. Merging State with existing State → State with larger area



1709



1789



1822

Change in Land Use / Deforestation

ER1: Object along road occupation

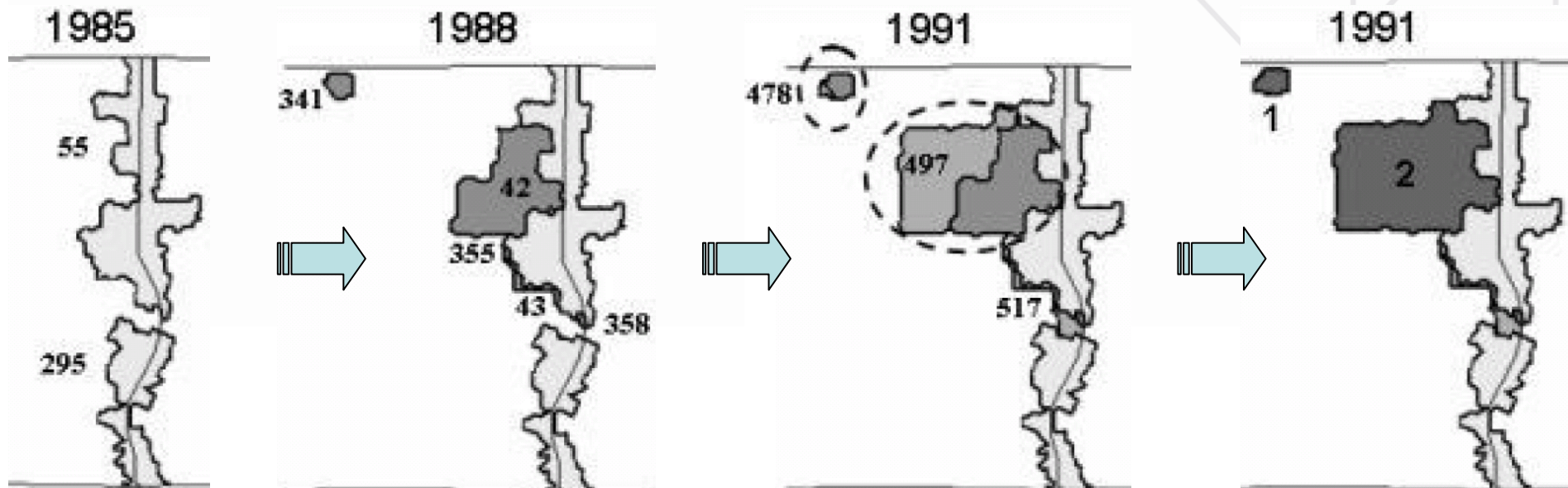
→ not merged with other objects

ER2: Two adjacent small lot objects

→ merged + new object is small lot

ER3: Small lot < 50 ha adjacent to land concentration object

→ merged with it + result is land concentration object



The Aim

We have:

- changes in many domains
- domain-specific theories of change
- influencing factors → cause change

We want:

- find common principles of change across different domains

→ general theory of change

The Project

1. Select several domains
2. Domain-Specific Theories of Change
3. Analogical Comparison
4. Develop General Theory of Change

The Project

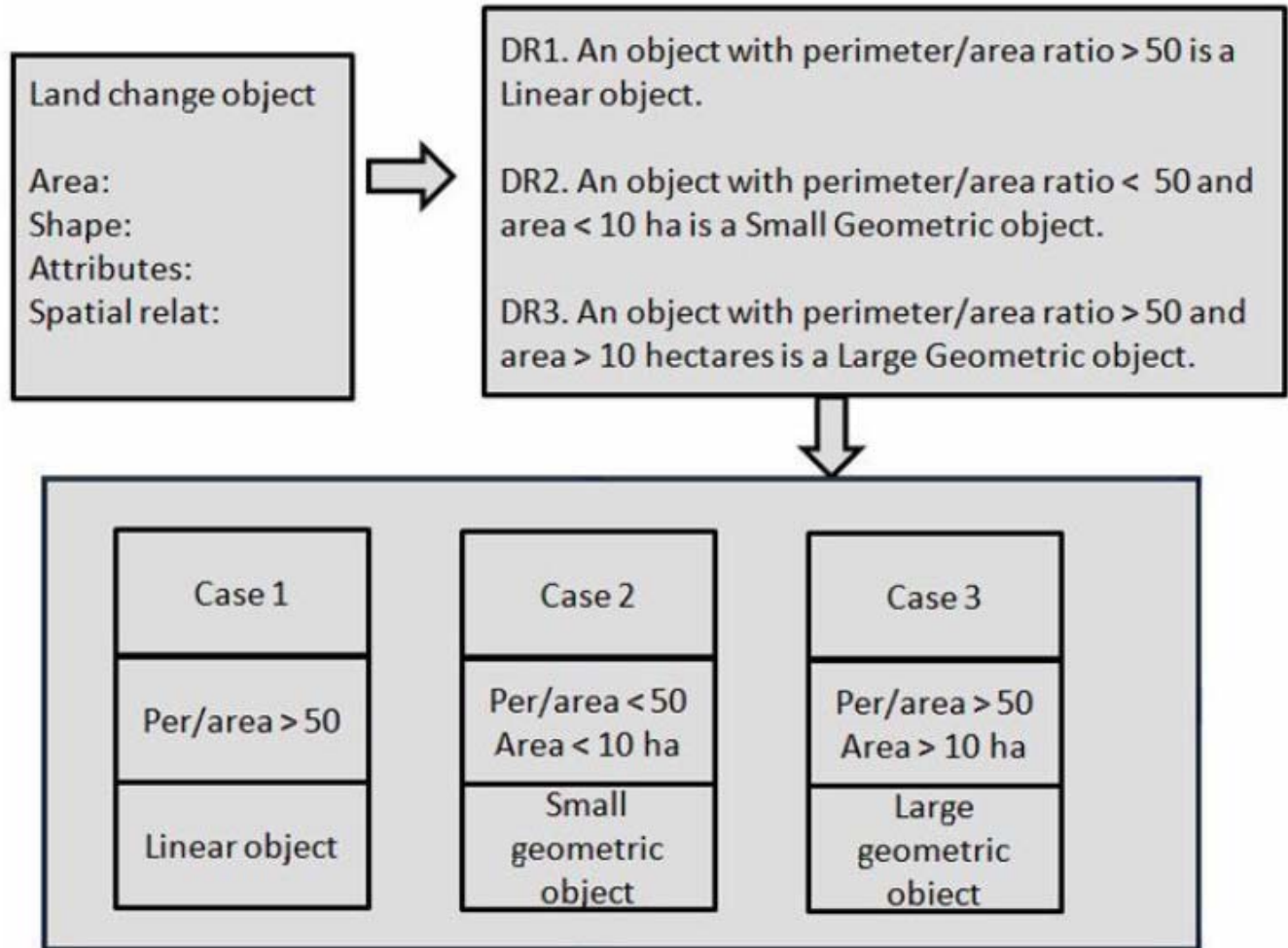
1. Select several domains
 - political change in Brazil
 - political change in Germany 19th century
 - land change objects in Amazonia
 - land change in urban area in Germany
 - ???
2. Domain-Specific Theories of Change
3. Analogical Comparison
4. Develop General Theory of Change

The Project

1. Select several domains
2. Domain-Specific Theories of Change
 - knowledge acquisition via unstructured interviews
 - description rules
 - evolution rules
3. Analogical Comparison
4. Develop General Theory of Change

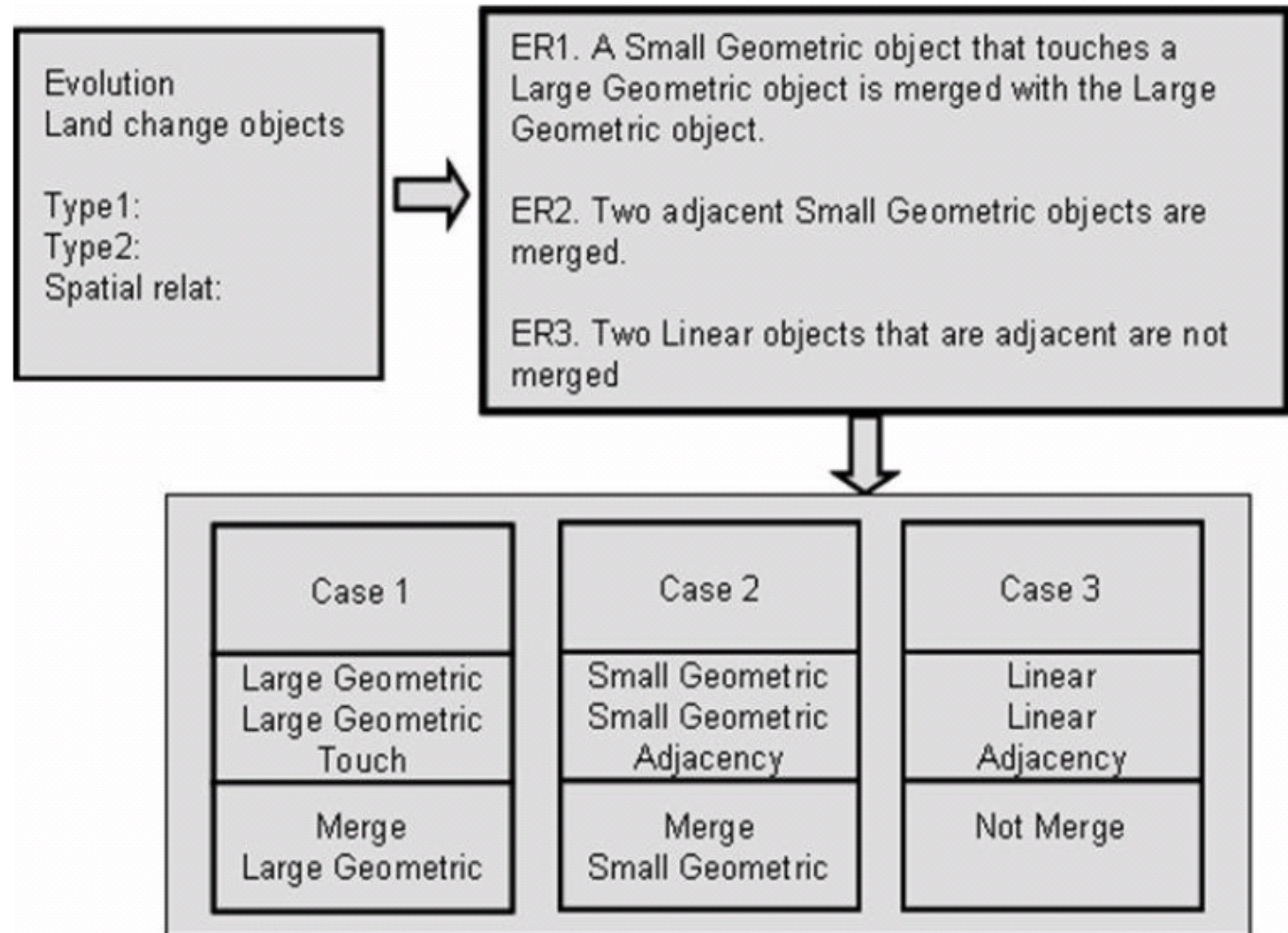
The Project

Description Rules



The Project

Evolution Rules



The Project

1. Select several domains
2. Domain-Specific Theories of Change
3. Analogical Comparison
 - compare description / evolution rules across domains
 - find common structural patterns
 - construct domain-independent description / evolution rules
4. Develop General Theory of Change

The Project

Evolution rules from two domains:

land change:

A small lot < 50 ha
adjacent to
a land concentration object
→
merged with it and
the result is a land
concentration object

political change:

A country with strong military
adjacent to
a land with weak military
→
conquers it and
incorporates it into its territory

The Project

Evolution rules from two domains:

land change:

A small lot < 50 ha
adjacent to
a land concentration object
→
merged with it and
the result is a land
concentration object

political change:

A country with strong military
adjacent to
a land with weak military
→
conquers it and
incorporates it into its territory

general change pattern:

A dominant object adjacent to a weak object



dominant object takes over weak object and
the result is one object

land change:

A small lot < 50 ha
adjacent to
a land concentration object



merged with it and
the result is a land
concentration object

political change:

A country with strong military
adjacent to
a land with weak military



conquers it and
incorporates it into its territory

Analogy Model *HDTP*

*analogy = structural comparison of
source & target*

**source
domain**

**target
domain**

description rules
evolution rules

description rules
evolution rules

Analogy Model *HDTP*

general description rules

generalization

general evolution rules

source domain

anti-unification

anti-unification

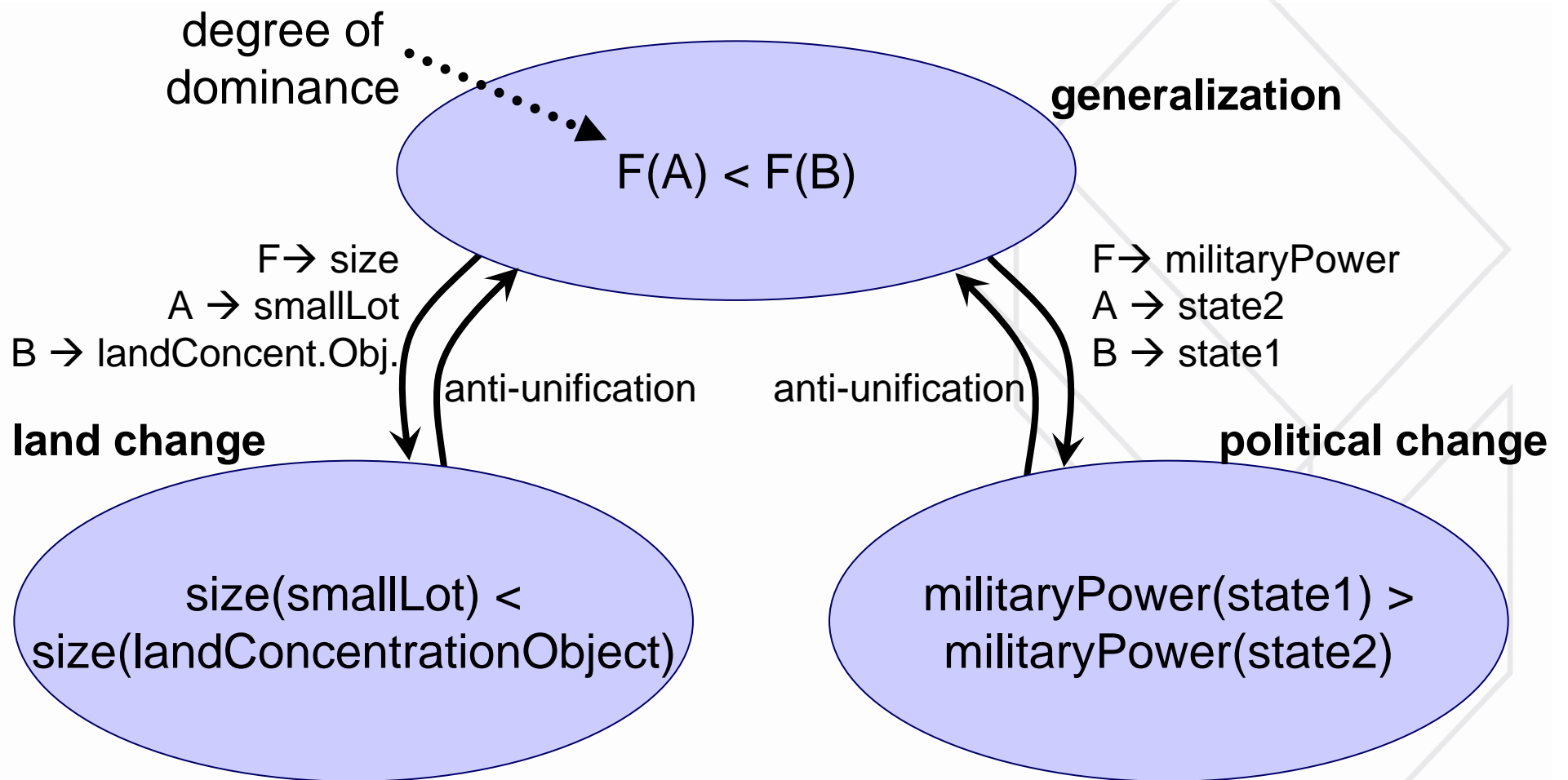
target domain

description rules

evolution rules

description rules

evolution rules



general theory of change

The Project

- Successive Ge

general theory on
organizational change

general theory
on political change

political changes
in Brazil

political changes
in Germany

land change
in Amazonia

...

The Project

1. Select several domains
2. Domain-Specific Theories of Change
3. Analogical Comparison
4. Develop General Theory of Change
 - set of change operators?
 - set of types or attributes?

Questions

