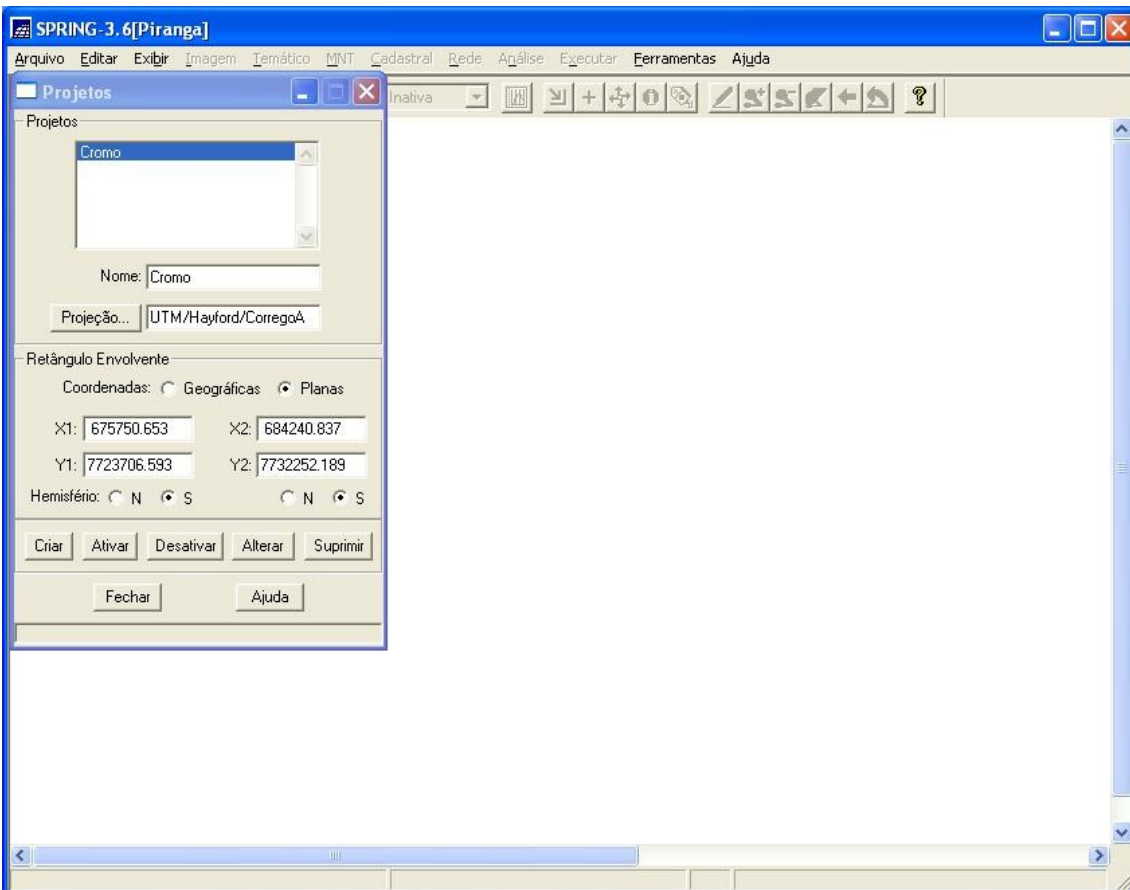
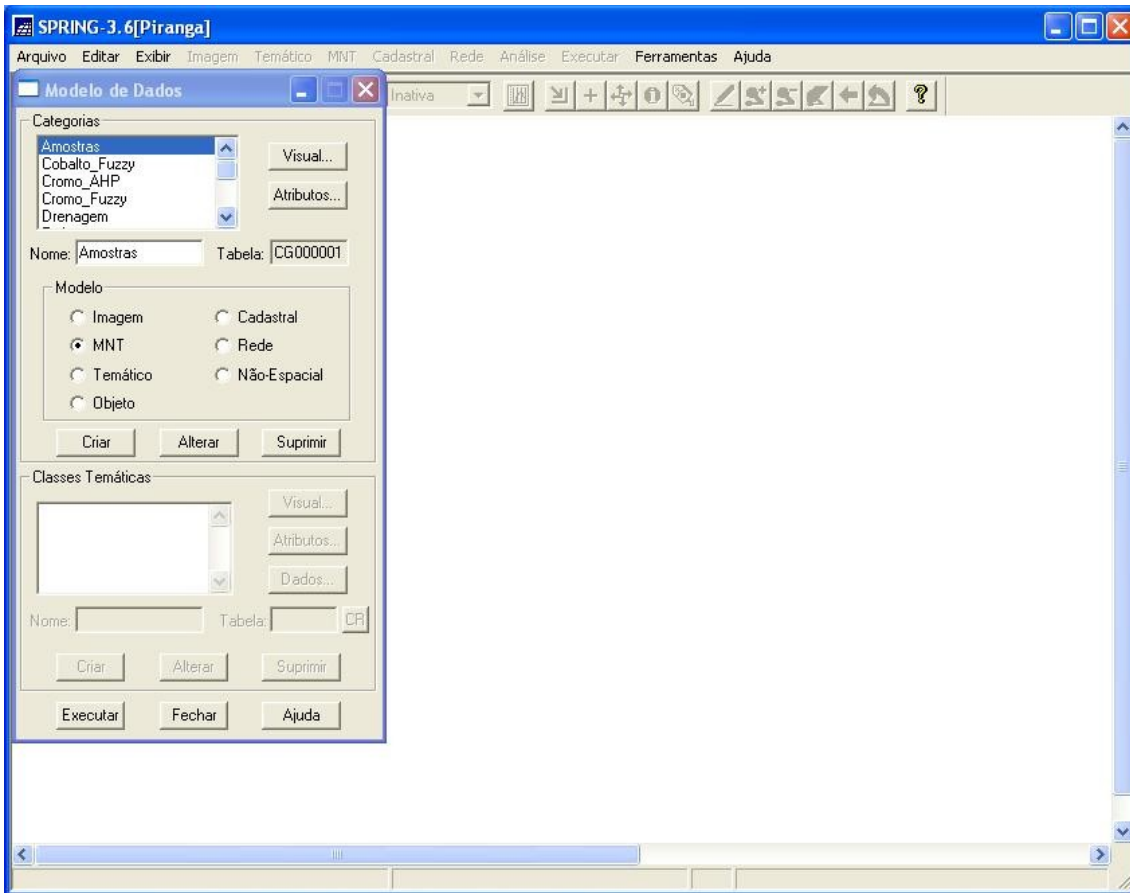
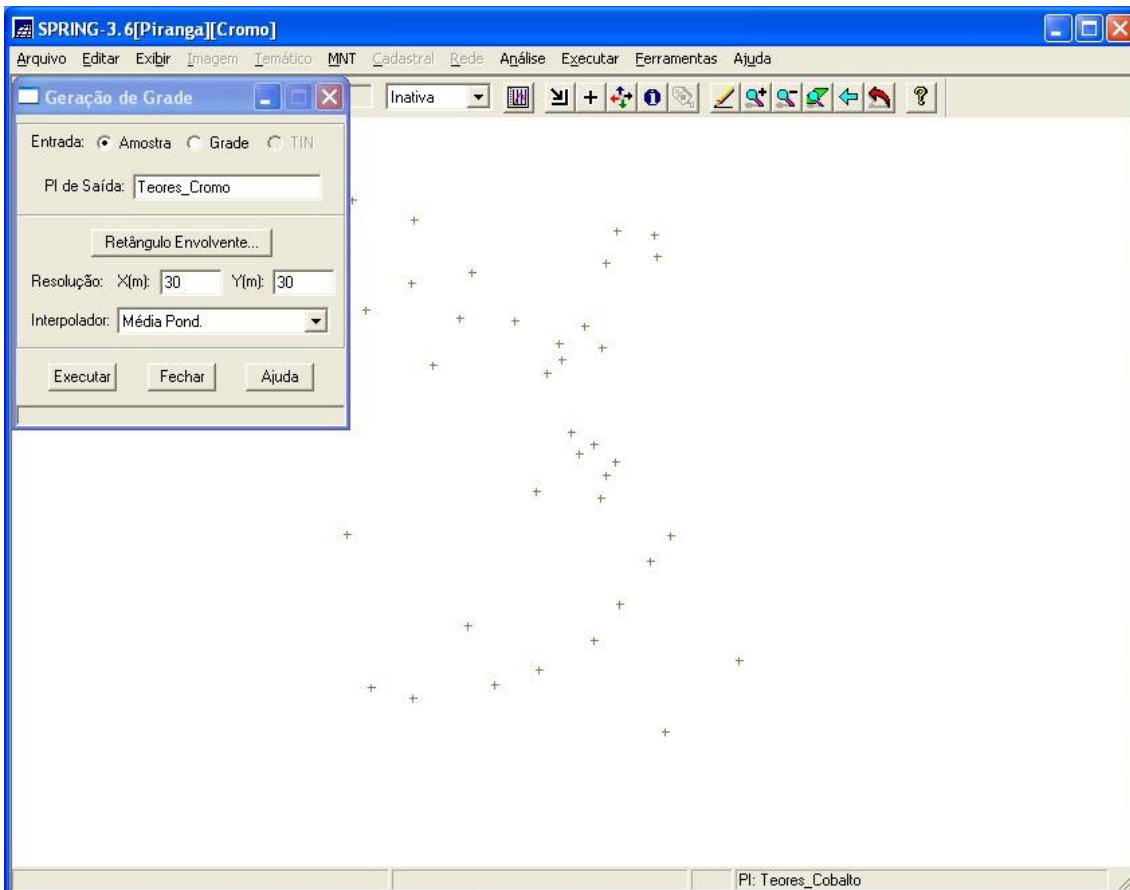
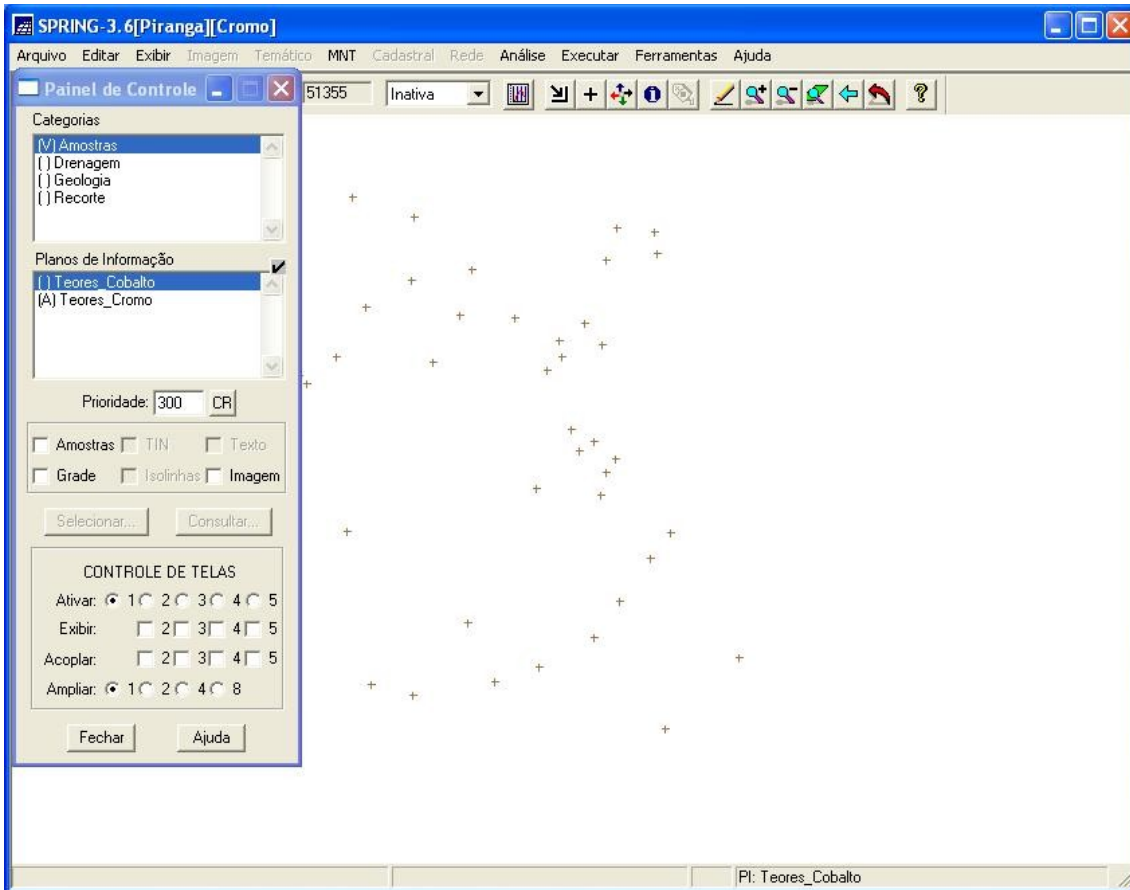
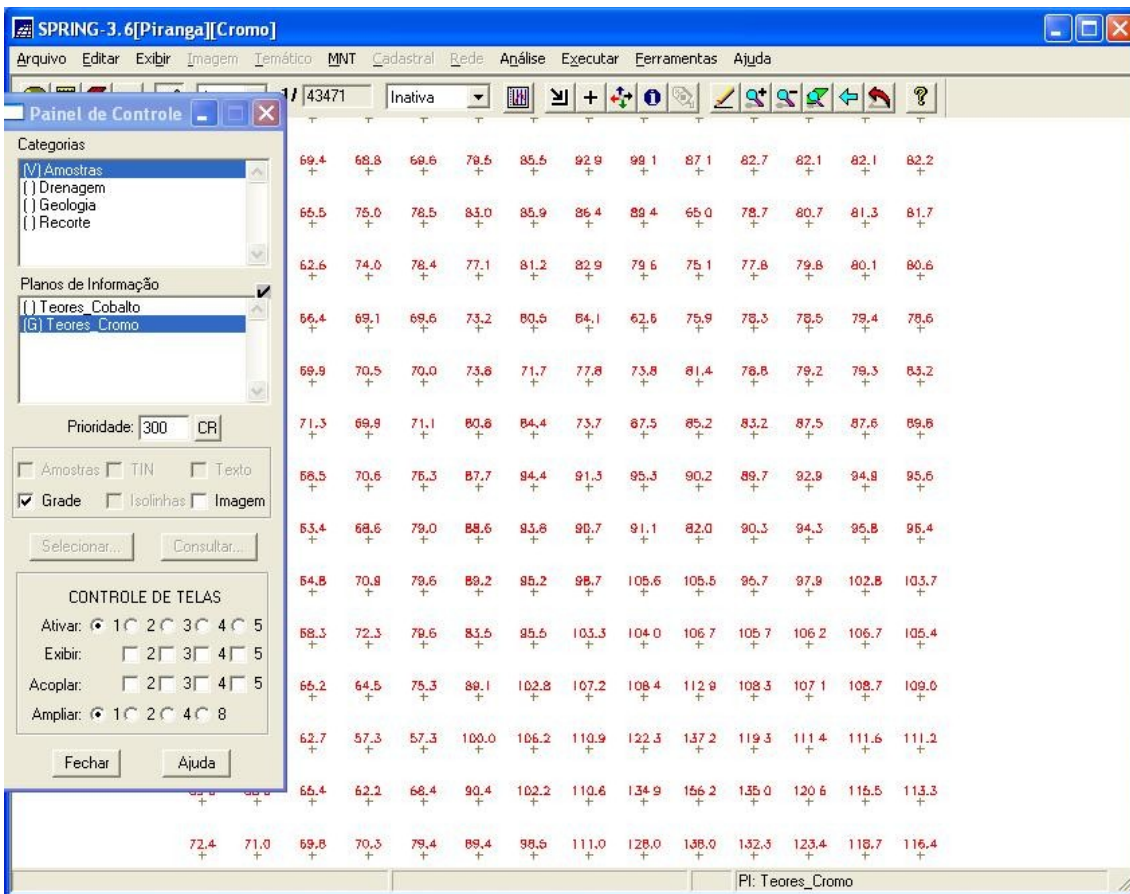
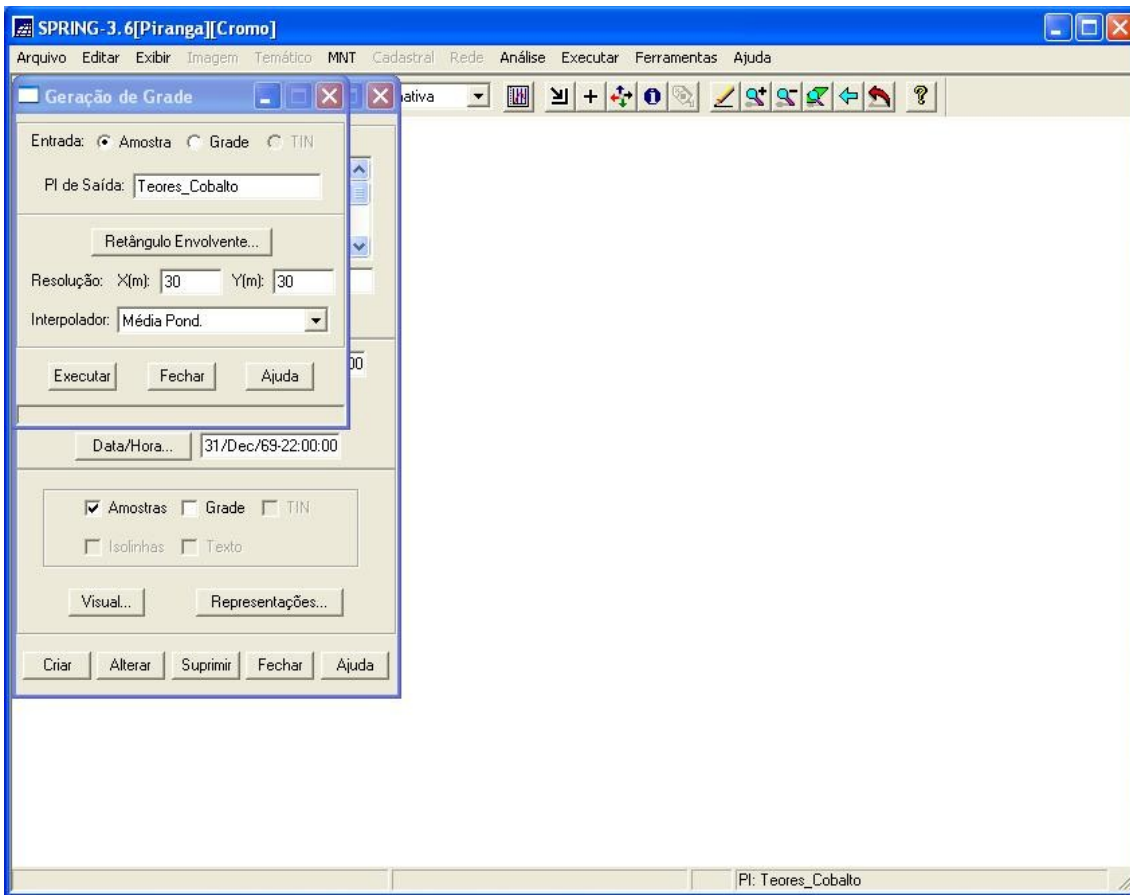


### Laboratório 4











SPRING-3.6[Piranga][Cromo]

Arquivo Editar Exibir Imagem Temático MNT Cadastral Rede Análise Executar Ferramentas Ajuda

Editor de Modelos

```

Programa
{
//Declaração
Tematico geo ("Geologia");
Numerico geoP ("Geologia_Ponderada");
Tabela geoT (Ponderacao);

//Instanciação
geo = Recupere (Nome="Mapa_Geologico");

geoP = Novo (Nome="Geologia_Ponderada", ResX=30, ResY=30, Escala=50000, Min = 0, Ma

```

Mensagens de Erro

Salvar Salvar Como... Fechar Ajuda

Ativar:  1  2  3  4  5  
Exibir:  2  3  4  5  
Acoplar:  2  3  4  5  
Ampliar:  1  2  4  8

Fechar Ajuda

82.7	82.1	82.1	82.2
78.7	80.7	81.3	81.7
77.8	79.8	80.1	80.6
78.3	78.5	79.4	78.6
78.8	79.2	79.3	83.2
83.2	87.5	87.6	89.6
89.7	92.9	94.9	95.6
90.3	94.3	95.8	95.4
95.7	97.9	102.8	103.7
88.3	72.3	79.6	83.5
85.5	85.5	103.3	104.0
106.7	105.7	106.2	106.7
105.4	66.2	64.5	75.3
88.1	102.8	107.2	108.4
112.9	108.3	107.1	108.7
109.0	62.7	57.3	57.3
100.0	106.2	110.9	122.3
137.2	119.3	111.4	111.6
111.2	65.4	62.2	68.4
90.4	102.2	110.6	134.9
156.2	135.0	120.6	115.5
113.3	72.4	71.0	69.8
70.3	79.4	89.4	98.6
111.0	128.0	138.0	132.3
123.4	118.7	116.4	

PI: Teores\_Cromo

SPRING-3.6[Piranga][Cromo]

Arquivo Editar Exibir Imagem Temático MNT Cadastral Rede Análise Executar Ferramentas Ajuda

Editor de Modelos

```

Programa
{
// Fuzzy cromo (ponto ideal com um teor de 1.855 % e ponto de cruzamento em 0.32)
//Declaração
Numerico cromo ("Amostras");
Numerico cromofuzzy ("Cromo_Fuzzy");

//Instanciação
cromo = Recupere (Nome="Teores_Cromo");
cromofuzzy = Novo (Nome="Cromo_Fuzzy", ResX=30, ResY=30, Escala=50000, Min=0, Max=1);

//operação

```

Mensagens de Erro

Salvar Salvar Como... Fechar Ajuda

Ativar:  1  2  3  4  5  
Exibir:  2  3  4  5  
Acoplar:  2  3  4  5  
Ampliar:  1  2  4  8

Fechar Ajuda

82.7	82.1	82.1	82.2
78.7	80.7	81.3	81.7
77.8	79.8	80.1	80.6
78.3	78.5	79.4	78.6
78.8	79.2	79.3	83.2
83.2	87.5	87.6	89.6
89.7	92.9	94.9	95.6
90.3	94.3	95.8	95.4
95.7	97.9	102.8	103.7
88.3	72.3	79.6	83.5
85.5	85.5	103.3	104.0
106.7	105.7	106.2	106.7
105.4	66.2	64.5	75.3
88.1	102.8	107.2	108.4
112.9	108.3	107.1	108.7
109.0	62.7	57.3	57.3
100.0	106.2	110.9	122.3
137.2	119.3	111.4	111.6
111.2	65.4	62.2	68.4
90.4	102.2	110.6	134.9
156.2	135.0	120.6	115.5
113.3	72.4	71.0	69.8
70.3	79.4	89.4	98.6
111.0	128.0	138.0	132.3
123.4	118.7	116.4	

PI: Teores\_Cromo

**SPRING-3.6[Piranga][Cromo]**

Arquivo Editar Exibir Imagem Temático MNT Cadastral Rede Análise Executar Ferramentas Ajuda

43471

**Painel de Controle**

Categorias

- [V] Amostras
- [ ] Cromo\_Fuzzy
- [ ] Drenagem
- [ ] Geologia
- [ ] Geologia\_Ponderada
- [ ] Recoite

Planos de Informação

- [G] Teores\_Cobalto
- [ ] Teores\_Cromo

Prioridade: 300 CR

Amostras  TIN  Texto

Grade  Isolinhas  Imagem

Selecionar... Consultar...

**CONTROLE DE TELAS**

Ativar: 1 2 3 4 5

Exibir: 2 3 4 5

Acoplar: 2 3 4 5

Ampliar: 1 2 4 8

Fechar Ajuda

**Editor de Modelos**

Programa

```
{  
  // Fuzzy cobalto (ponto ideal com um teor de 150.92 ppm e ponto de cruzamento em 80ppm)  
  
  //Declaração  
  Numerico cobal ("Amostras");  
  Numerico cobalfuzzy ("Cobalto_Fuzzy");  
  
  //Instanciação  
  cobal = Recupere { Nome= "Teores_Cobalto"};  
  cobalfuzzy = Novo{ Nome= "Cobalto_Fuzzy", ResX = 30, ResY = 30, Escala = 50000, Min = 0, Max = 150.92, Cruzamento = 80};  
}
```

Mensagens de Erro

Salvar Salvar Como... Fechar Ajuda

69.4	69.4	69.4	69.4	69.4	69.4	69.4	69.4	69.4	69.4	69.4	69.4	69.4	69.4	69.4
66.5	66.5	66.5	66.5	66.5	66.5	66.5	66.5	66.5	66.5	66.5	66.5	66.5	66.5	66.5
62.6	62.6	62.6	62.6	62.6	62.6	62.6	62.6	62.6	62.6	62.6	62.6	62.6	62.6	62.6
66.4	66.4	66.4	66.4	66.4	66.4	66.4	66.4	66.4	66.4	66.4	66.4	66.4	66.4	66.4
69.9	69.9	69.9	69.9	69.9	69.9	69.9	69.9	69.9	69.9	69.9	69.9	69.9	69.9	69.9
71.3	71.3	71.3	71.3	71.3	71.3	71.3	71.3	71.3	71.3	71.3	71.3	71.3	71.3	71.3
68.5	68.5	68.5	68.5	68.5	68.5	68.5	68.5	68.5	68.5	68.5	68.5	68.5	68.5	68.5
63.4	63.4	63.4	63.4	63.4	63.4	63.4	63.4	63.4	63.4	63.4	63.4	63.4	63.4	63.4
64.8	64.8	64.8	64.8	64.8	64.8	64.8	64.8	64.8	64.8	64.8	64.8	64.8	64.8	64.8
68.3	72.3	79.6	83.5	85.5	103.3	104.0	106.7	105.7	106.2	106.7	105.4	105.4	105.4	105.4
66.2	64.5	75.3	88.1	102.8	107.2	108.4	112.9	108.3	107.1	108.7	109.0	109.0	109.0	109.0
62.7	57.3	57.3	100.0	106.2	110.9	122.3	137.2	119.3	111.4	111.6	111.2	111.2	111.2	111.2
65.4	62.2	68.4	90.4	102.2	110.6	134.9	156.2	135.0	120.6	115.5	113.3	113.3	113.3	113.3
72.4	71.0	69.8	70.3	79.4	89.4	98.6	111.0	128.0	138.0	132.3	123.4	118.7	116.4	116.4

PI: Teores\_Cobalto

**SPRING-3.6[Piranga][Cromo]**

Arquivo Editar Exibir Imagem Temático MNT Cadastral Rede Análise Executar Ferramentas Ajuda

43471 Inativa

**Painel de Controle**

Categorias

- [ ] Amostras
- [V] Cobalto\_Fuzzy
- [ ] Cromo\_Fuzzy
- [ ] Drenagem
- [ ] Geologia
- [ ] Geologia\_Ponderada

Planos de Informação

- [ ] Teores\_Cobalto
- [ ] Teores\_Cromo

Prioridade: 300 CR

Amostras  TIN  Texto

Grade  Isolinhas  Imagem

Selecionar... Consultar...

**CONTROLE DE TELAS**

Ativar: 1 2 3 4 5

Exibir: 2 3 4 5

Acoplar: 2 3 4 5

Ampliar: 1 2 4 8

Fechar Ajuda

4.3e-00	4.3e-00	4.3e-00	4.3e-00	4.3e-00	4.3e-00	4.3e-00	4.3e-00	4.3e-00	4.3e-00	4.3e-00	4.3e-00	4.3e-00	4.3e-00	4.3e-00
4.1e-00	4.7e-00	4.9e-00	5.2e-00	5.4e-00	5.5e-00	5.7e-00	6.1e-00	6.9e-00	5.1e-00	5.1e-00	5.1e-00	5.1e-00	5.1e-00	5.1e-00
5.9e-00	4.6e-00	4.9e-00	4.8e-00	5.1e-00	5.2e-00	5.0e-00	4.7e-00	4.9e-00	5.0e-00	5.0e-00	5.1e-00	5.1e-00	5.1e-00	5.1e-00
4.1e-00	4.3e-00	4.3e-00	4.6e-00	5.0e-00	5.3e-00	5.9e-00	4.7e-00	4.9e-00	4.9e-00	5.0e-00	4.9e-00	4.9e-00	4.9e-00	4.9e-00
4.3e-00	4.4e-00	4.4e-00	4.5e-00	4.5e-00	4.9e-00	4.6e-00	5.1e-00	4.9e-00	5.0e-00	5.0e-00	5.2e-00	5.2e-00	5.2e-00	5.2e-00
4.4e-00	4.3e-00	4.4e-00	5.1e-00	5.3e-00	4.6e-00	5.6e-00	5.4e-00	5.2e-00	5.6e-00	5.6e-00	5.7e-00	5.7e-00	5.7e-00	5.7e-00
4.3e-00	4.4e-00	4.8e-00	5.5e-00	6.1e-00	5.9e-00	6.2e-00	5.8e-00	5.7e-00	5.0e-00	6.2e-00	6.2e-00	6.2e-00	6.2e-00	6.2e-00
4.0e-00	4.3e-00	4.9e-00	5.7e-00	6.1e-00	5.8e-00	5.9e-00	5.2e-00	5.5e-00	5.1e-00	5.2e-00	5.3e-00	5.3e-00	5.3e-00	5.3e-00
4.0e-00	4.4e-00	5.0e-00	5.7e-00	6.0e-00	5.5e-00	6.0e-00	7.1e-00	7.1e-00	5.2e-00	5.4e-00	5.9e-00	5.9e-00	5.9e-00	5.9e-00
4.3e-00	4.5e-00	5.0e-00	5.3e-00	6.2e-00	6.9e-00	7.0e-00	7.2e-00	7.1e-00	7.2e-00	7.2e-00	7.1e-00	7.1e-00	7.1e-00	7.1e-00
4.1e-00	4.0e-00	4.7e-00	5.7e-00	6.9e-00	7.3e-00	7.4e-00	7.8e-00	7.4e-00	7.2e-00	7.4e-00	7.4e-00	7.4e-00	7.4e-00	7.4e-00
5.9e-00	0.0	0.0	6.6e-00	17.2e-00	6e-00	6.6e-00	6.6e-00	6.3e-00	7.6e-00	7.7e-00	7.6e-00	7.6e-00	7.6e-00	7.6e-00
4.1e-00	5.9e-00	4.3e-00	5.8e-00	6.8e-00	7.6e-00	9.5e-00	1.000	9.5e-00	6.5e-00	6.0e-00	7.8e-00	7.8e-00	7.8e-00	7.8e-00
4.5e-00	4.4e-00	4.3e-00	4.4e-00	5.0e-00	5.7e-00	6.9e-00	7.6e-00	8.1e-00	8.7e-00	8.4e-00	8.7e-00	8.3e-00	8.1e-00	8.1e-00

PI: Teores\_Cobalto



