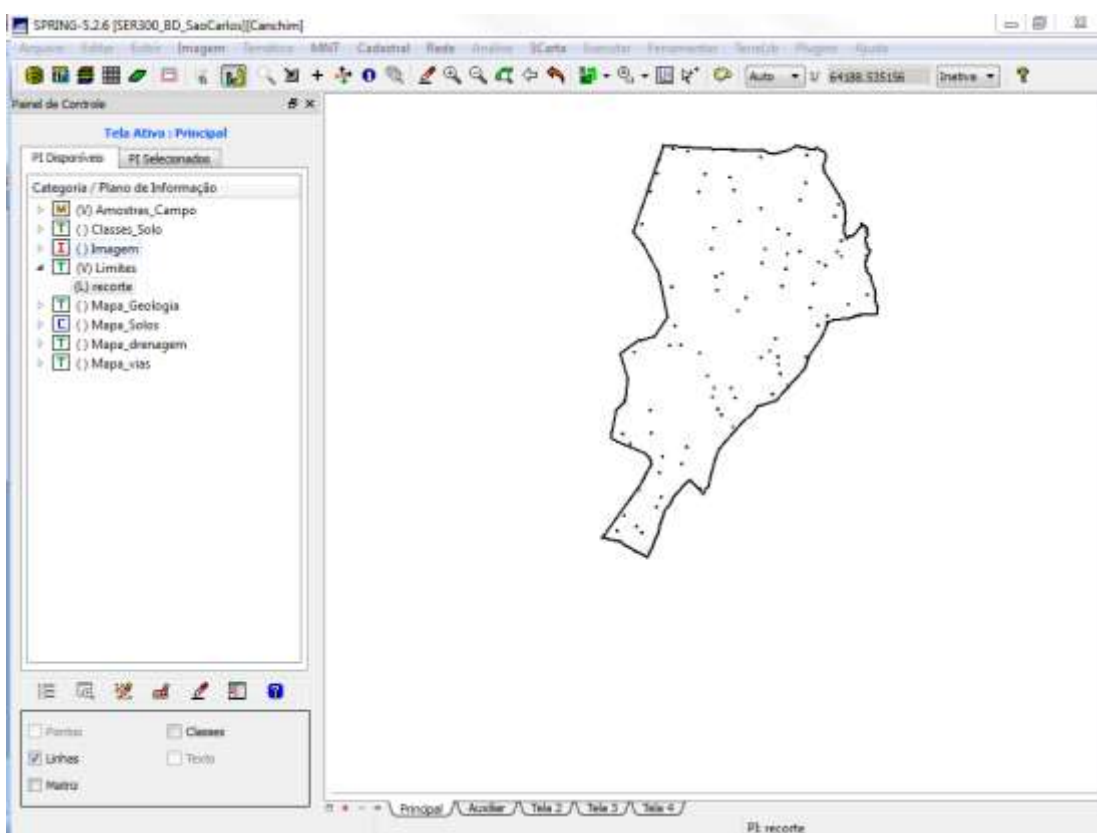


SER-300 – Introdução ao Geoprocessamento

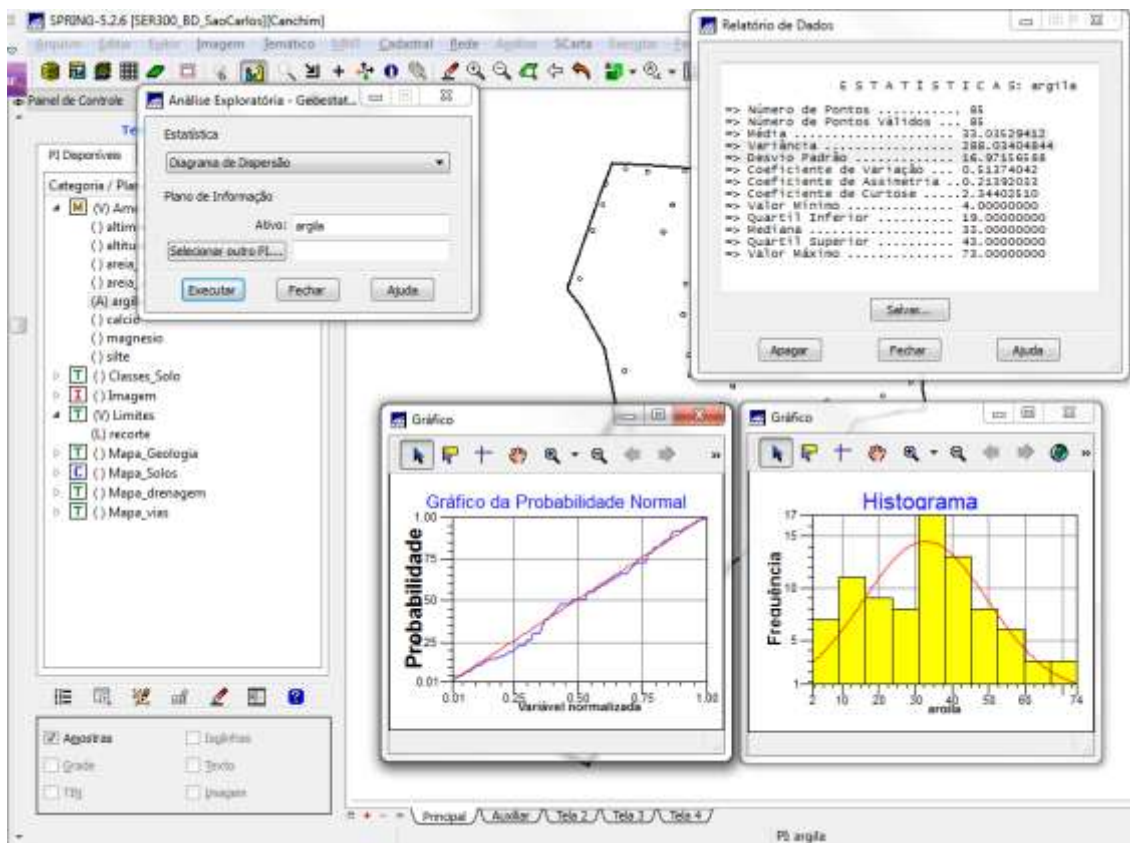
**David de Andrade Costa**

---

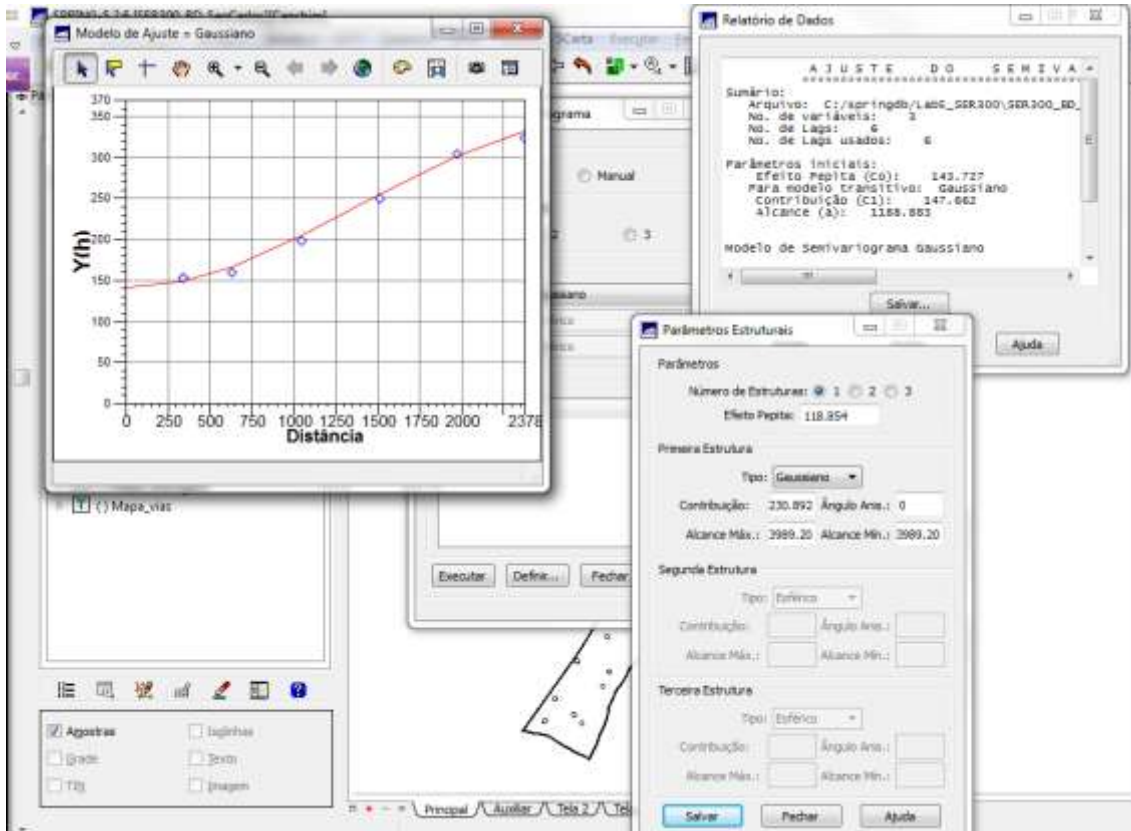
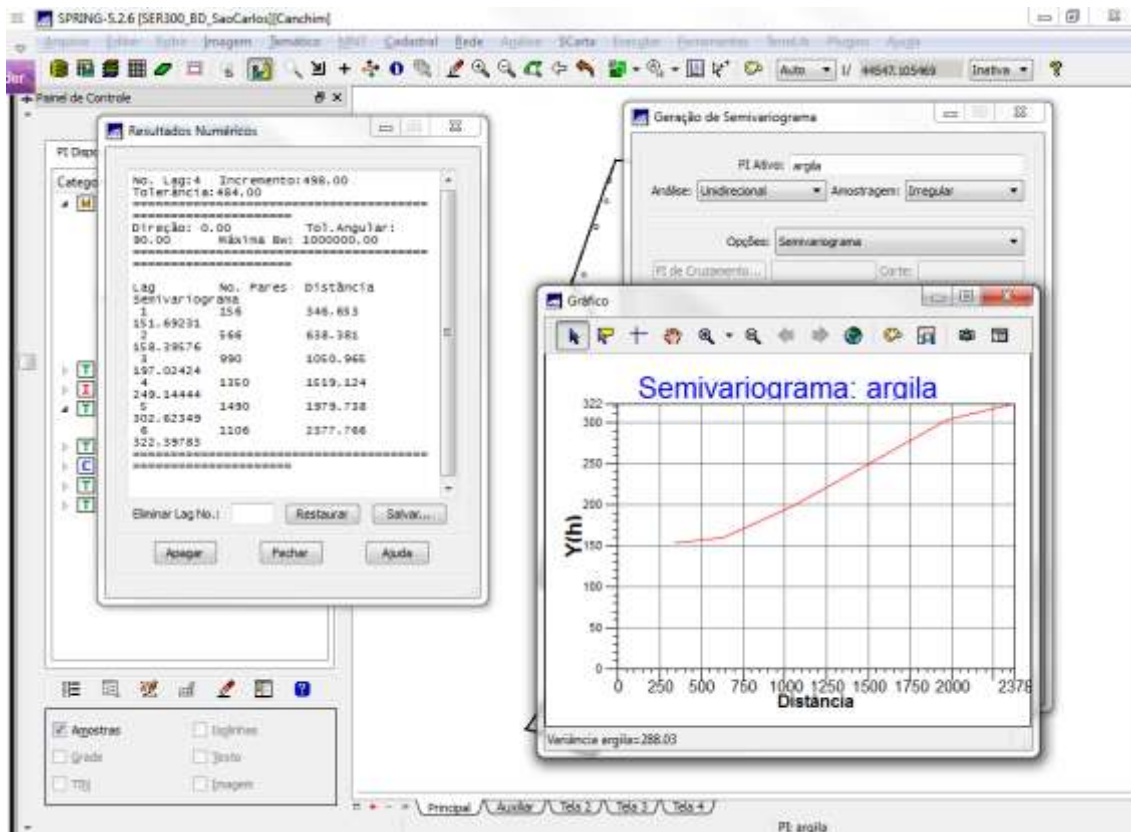
## 2. CARREGAR OS DADOS NO SISTEMA SPRING



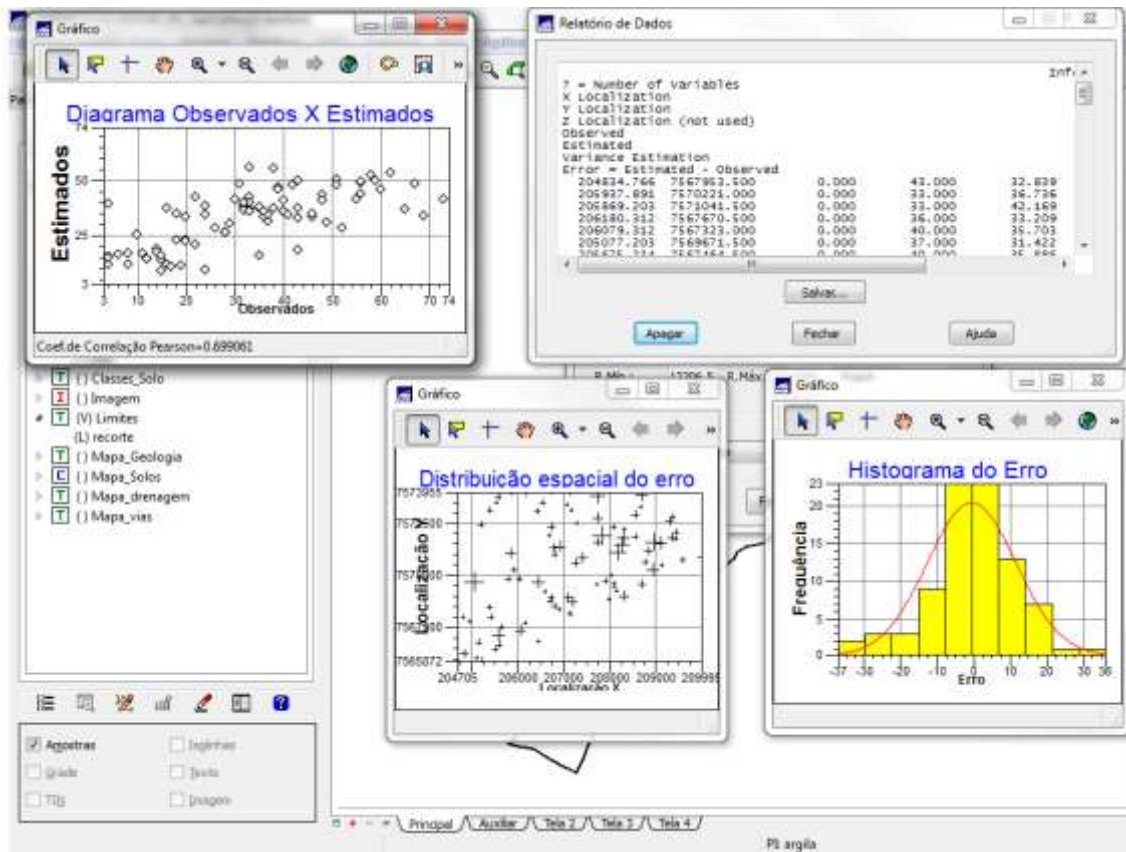
## 4. ANÁLISE EXPLORATÓRIA



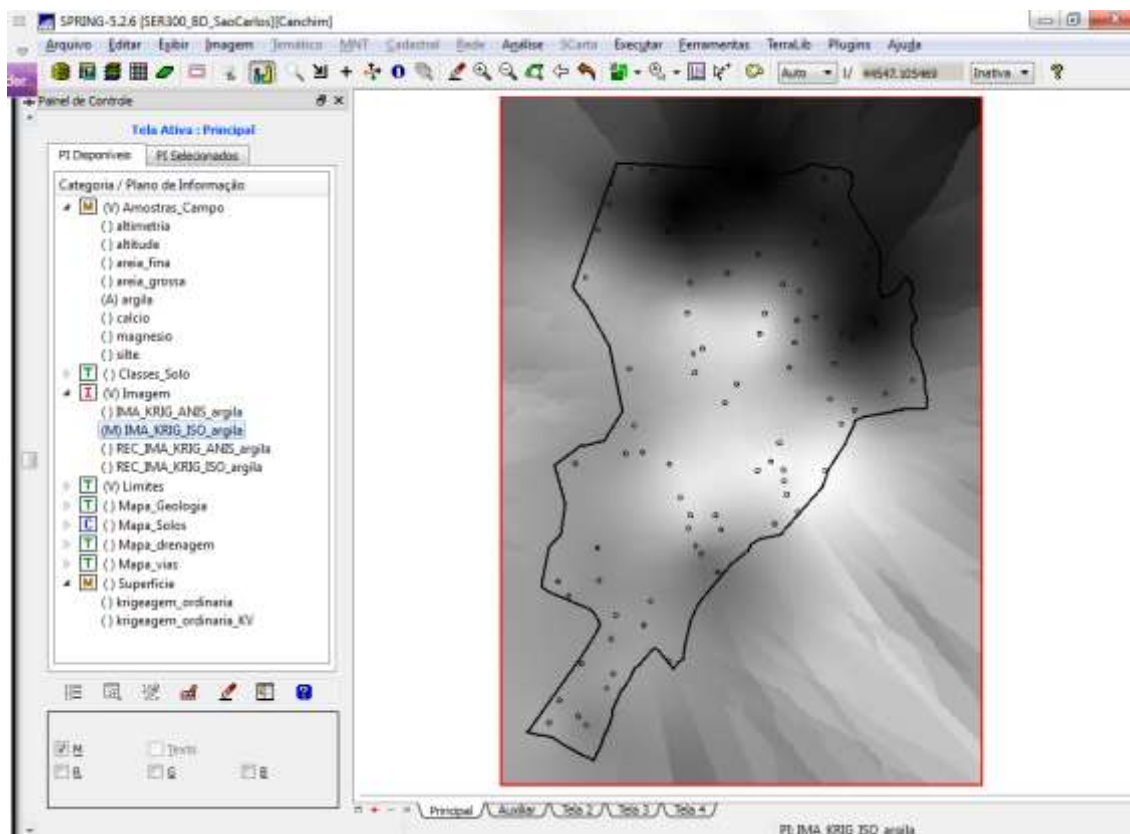
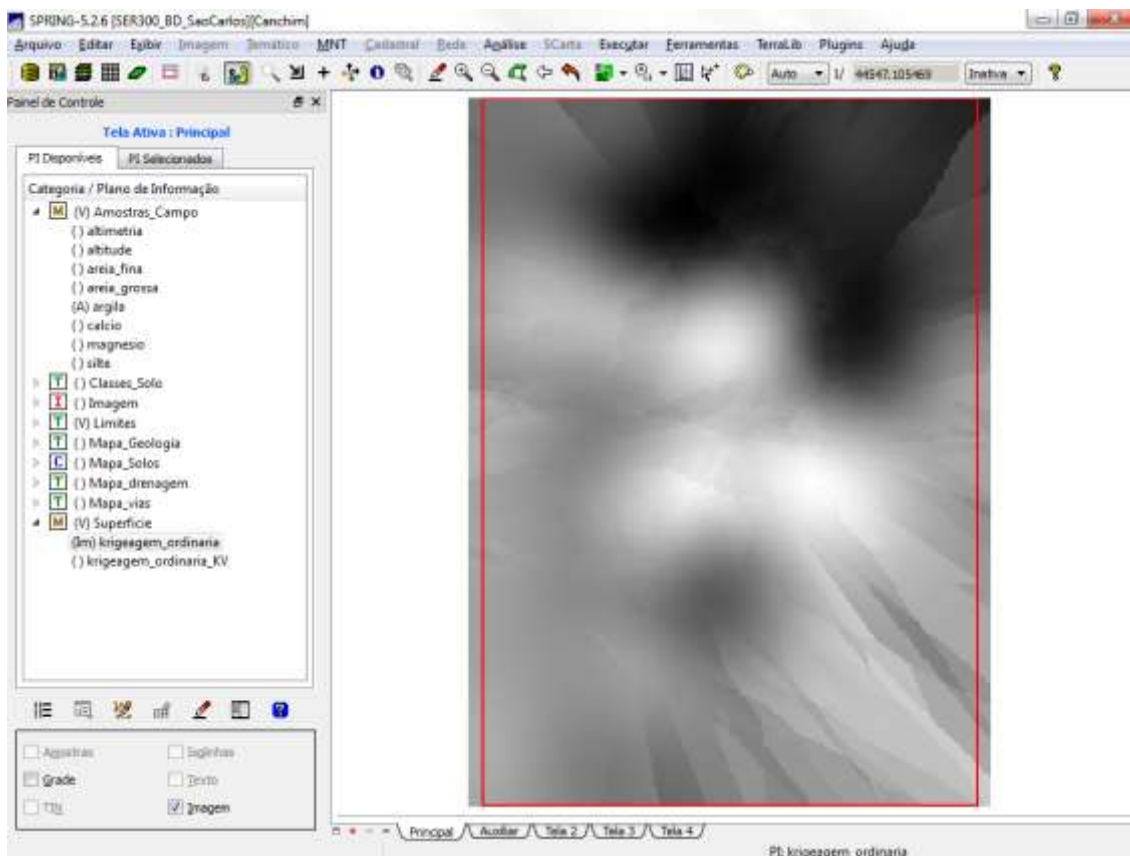
## 5.1 ANÁLISE DA VARIABILIDADE ESPACIAL POR SEMIVARIOGRAMA

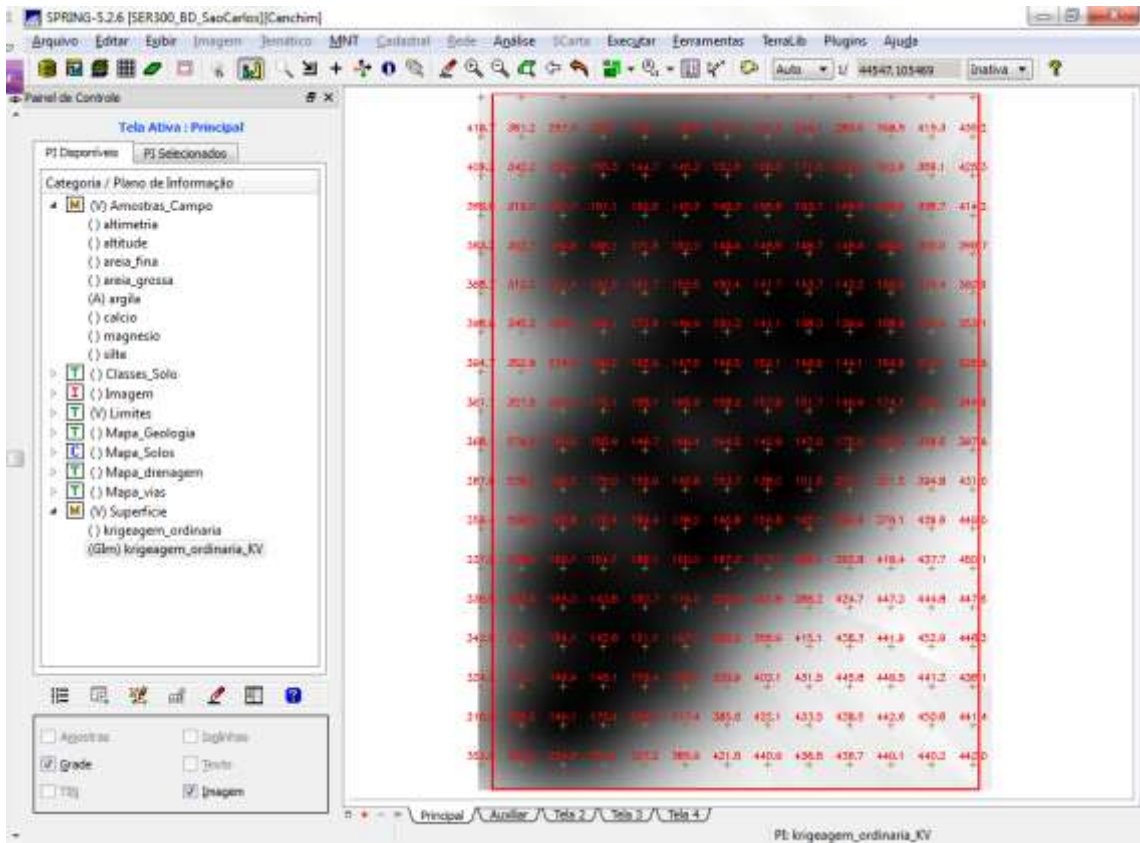


### 5.3 VALIDAÇÃO DO MODELO DE AJUSTE

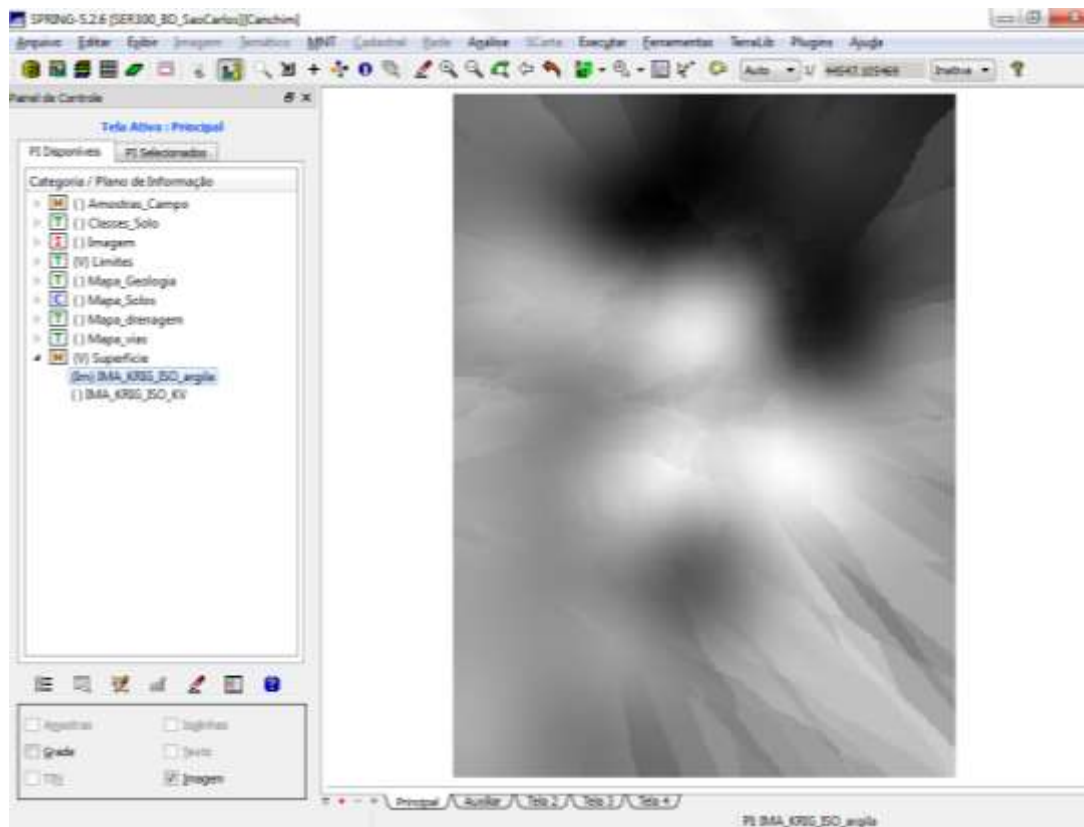


## 5.4 INTERPOLAÇÃO POR KRIGEAGEM ORDINÁRIA

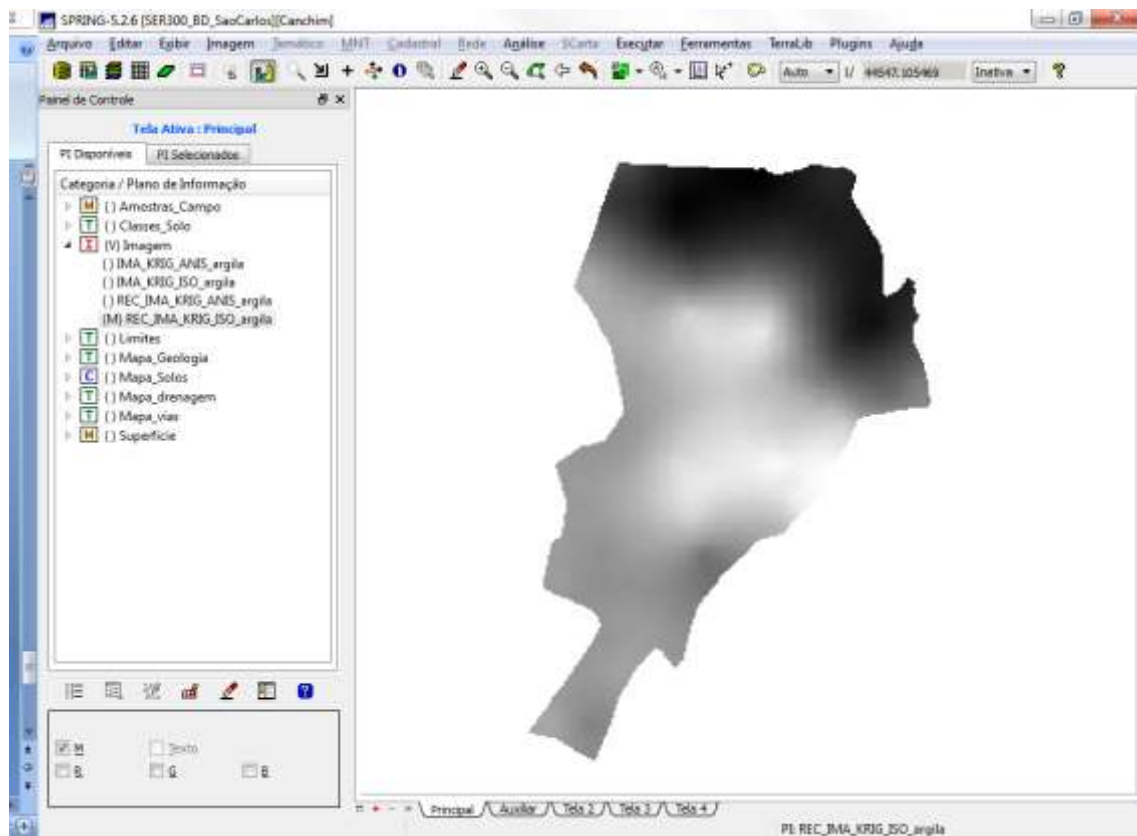




## 5.5 VISUALIZAÇÃO DA SUPERFÍCIE DE ARGILA

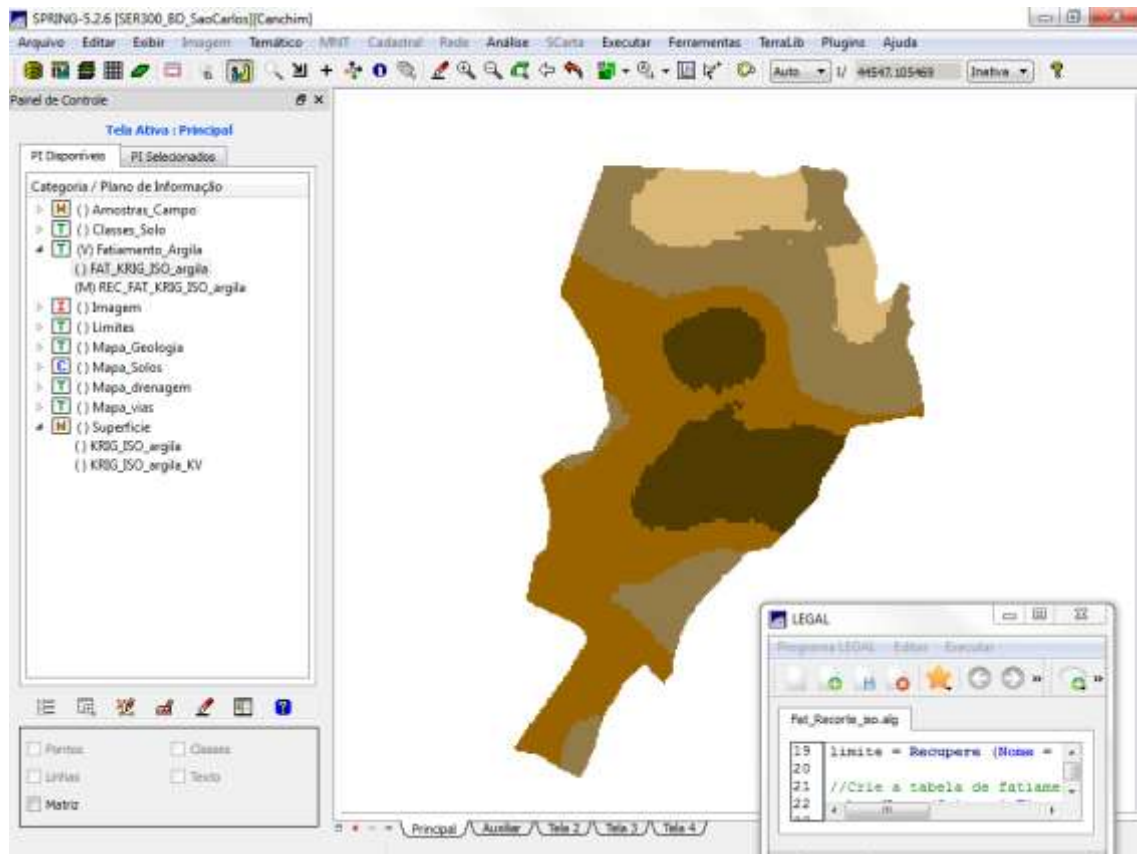


## 5.6 EXECUTAR RECORTE DA IMAGEM GERADA UTILIZANDO LEGAL



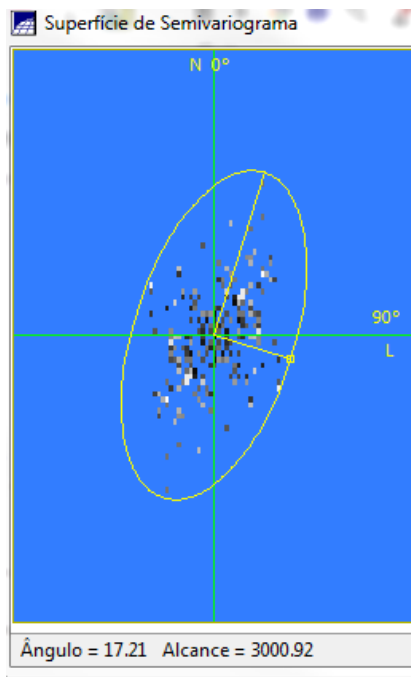


## 5.7 EXECUTAR FATIAMENTO E RECORTE DA GRADE DO TEOR DE ARGILA

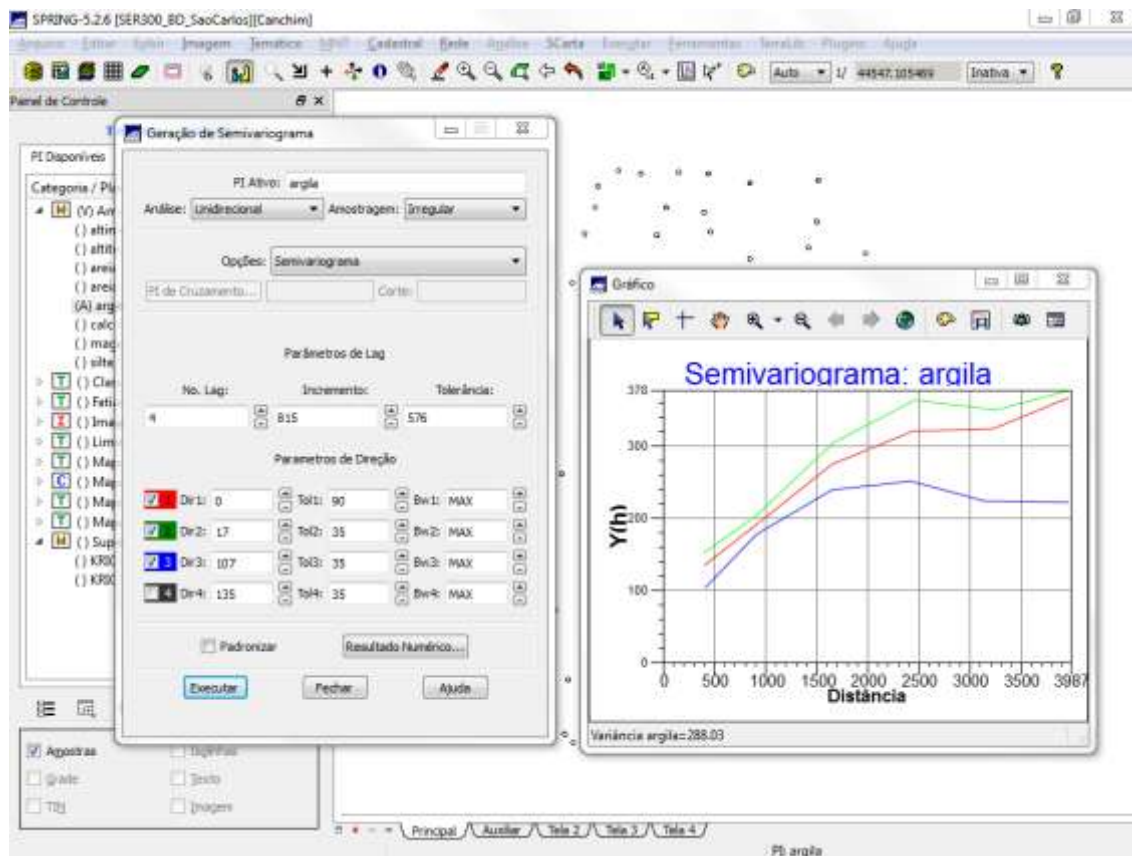


## 6.CASO ANISOTRÓPICO

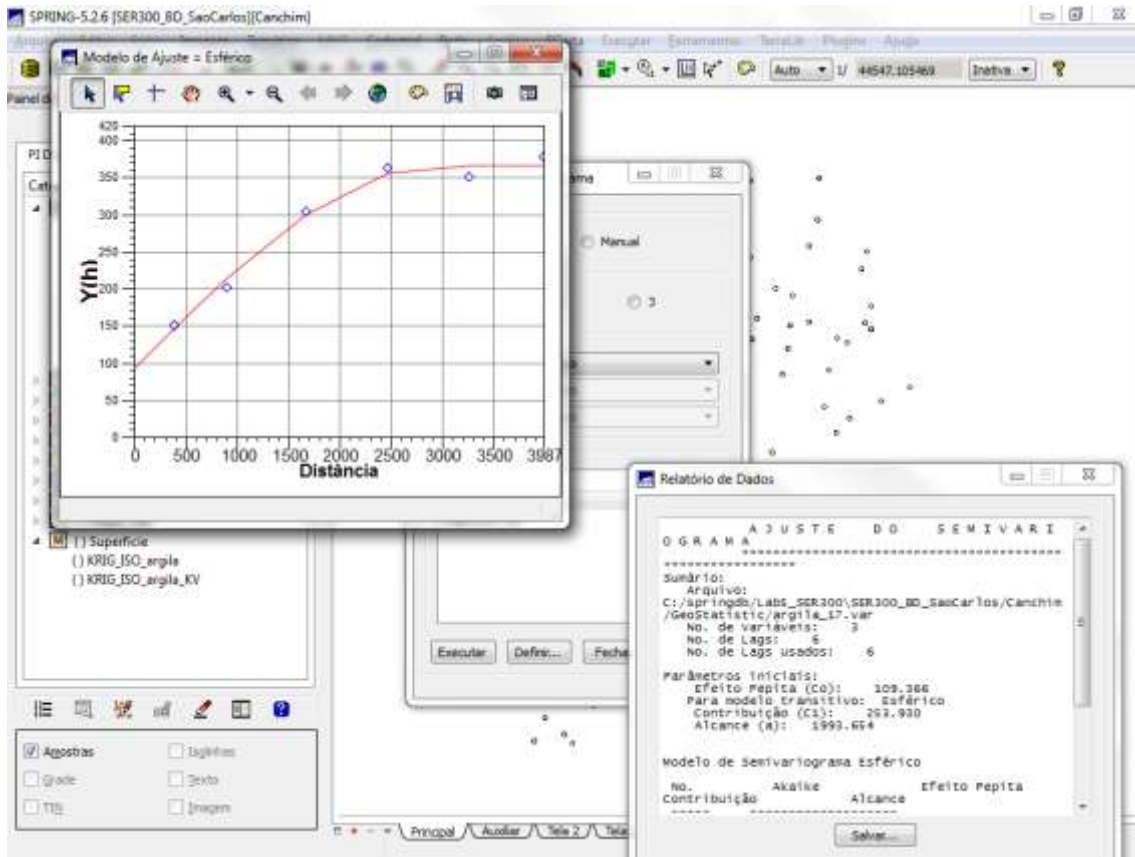
### 6.1 DETECÇÃO DOS EIXOS DE ANISOTROPIA



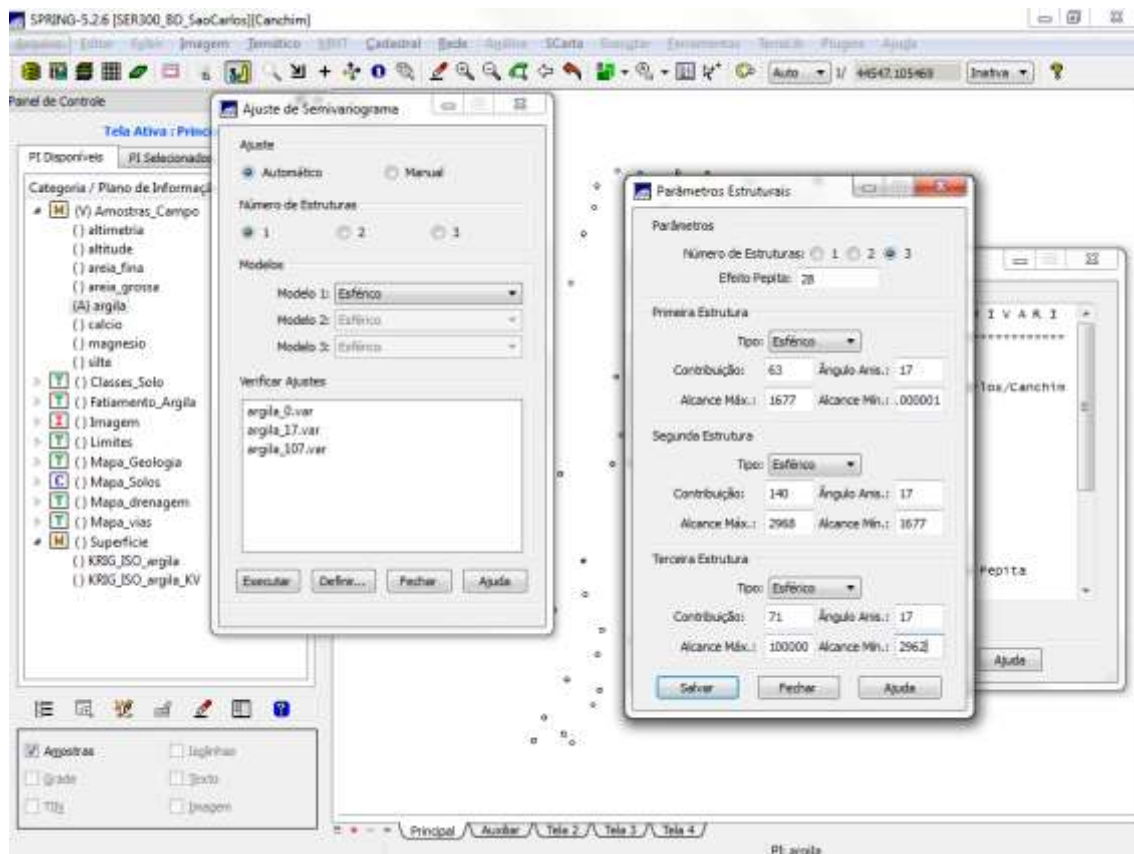
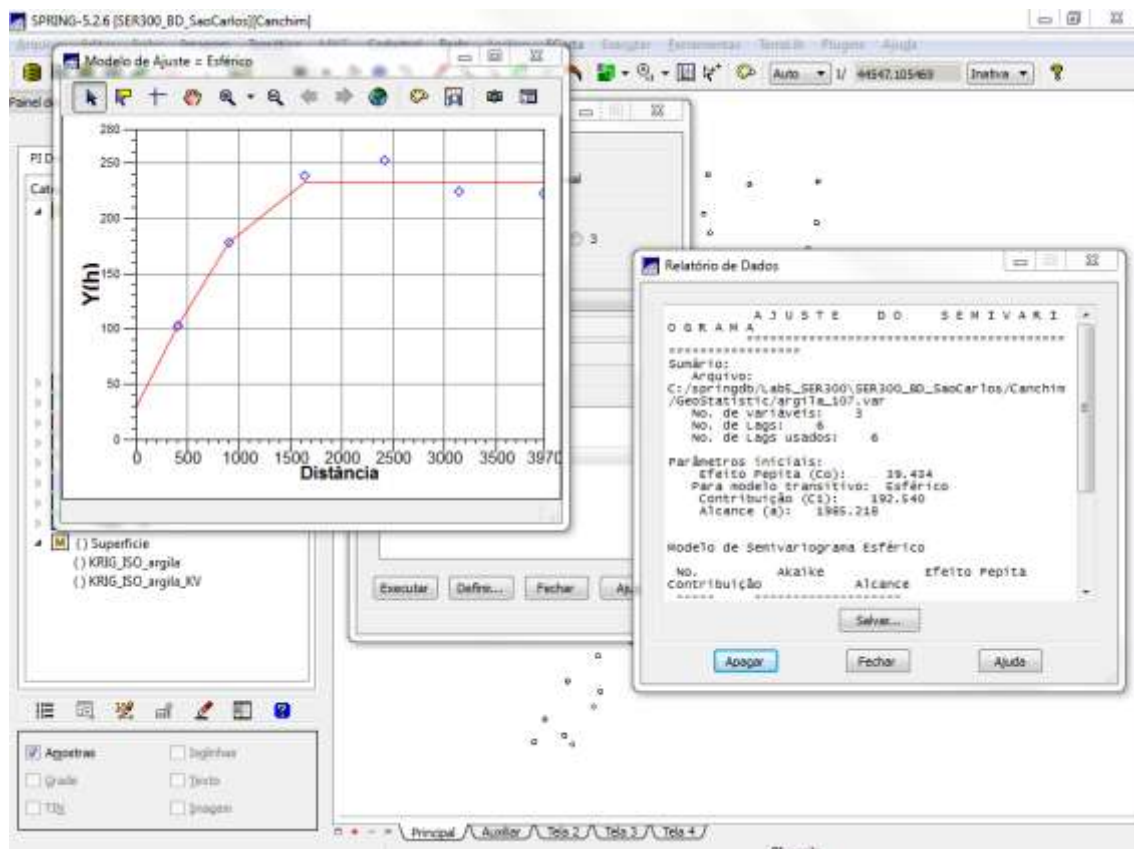
## 6.2 GERAÇÃO DOS SEMIVARIOGRAMAS DIRECIONAIS



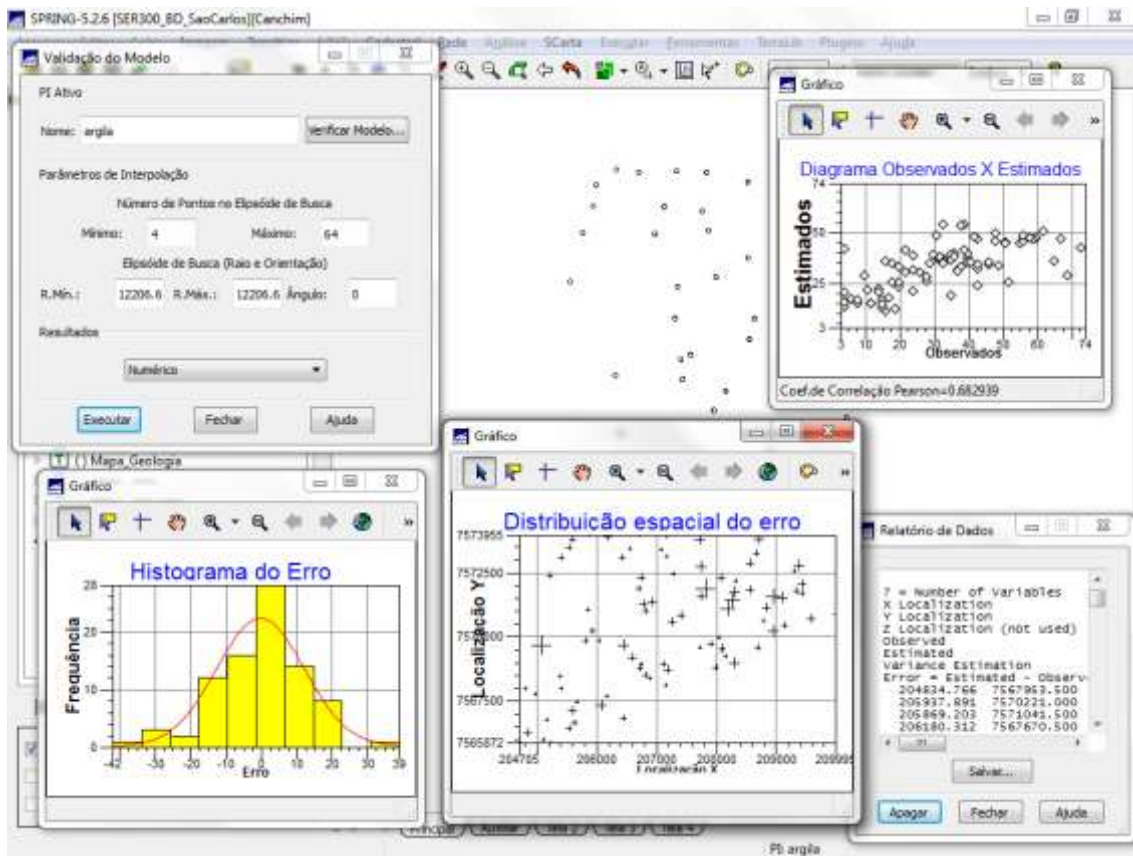
### 6.3 MODELAGEM DOS SEMIVARIOGRAMAS DIRECIONAIS



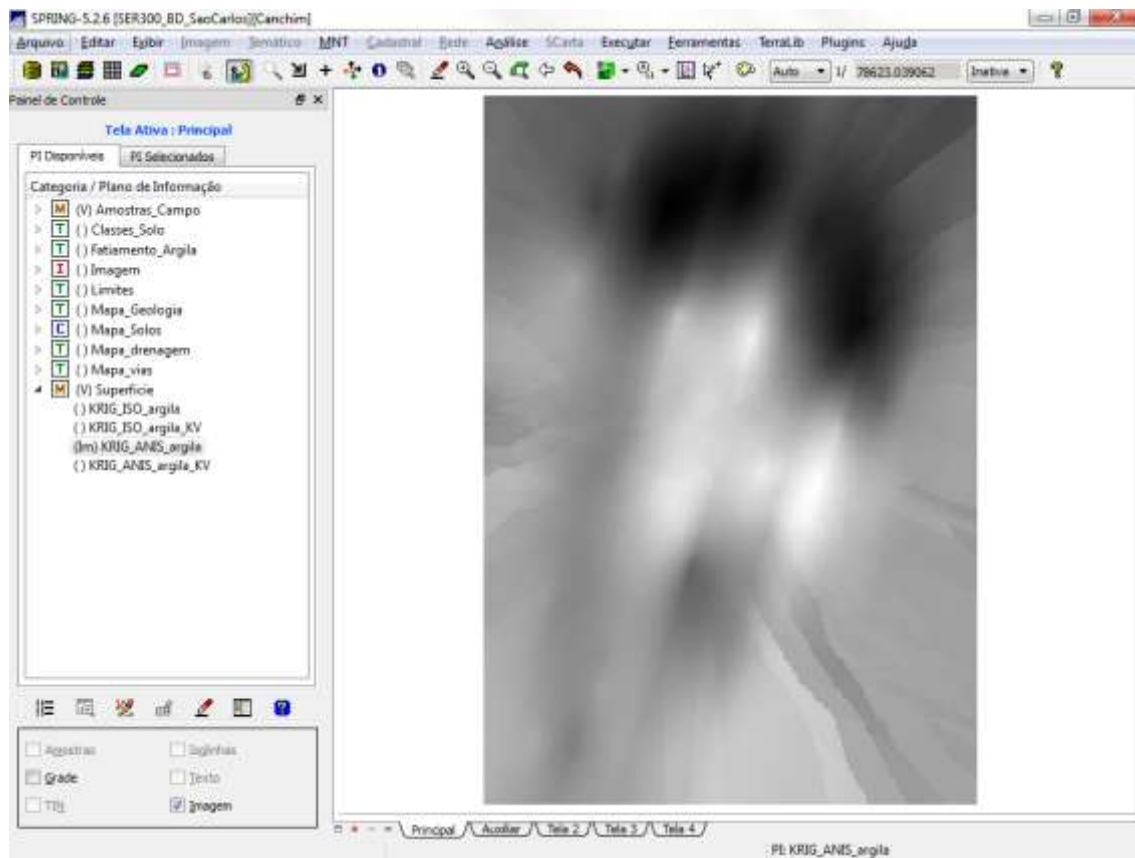
## 6.4 MODELAGEM DA ANISOTROPIA



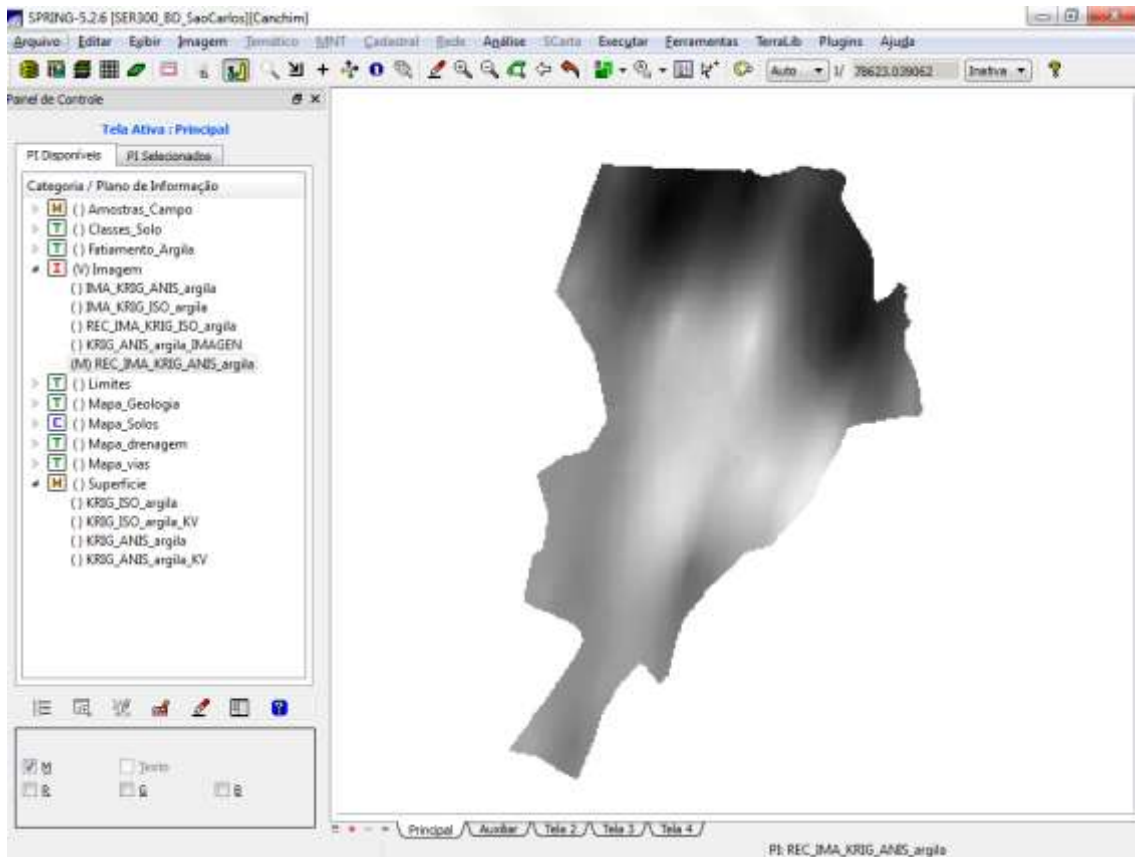
## 6.5 VALIDAÇÃO DO MODELO DE AJUSTE



## 6.6 INTERPOLAÇÃO POR KRIGEAGEM ORDINÁRIA

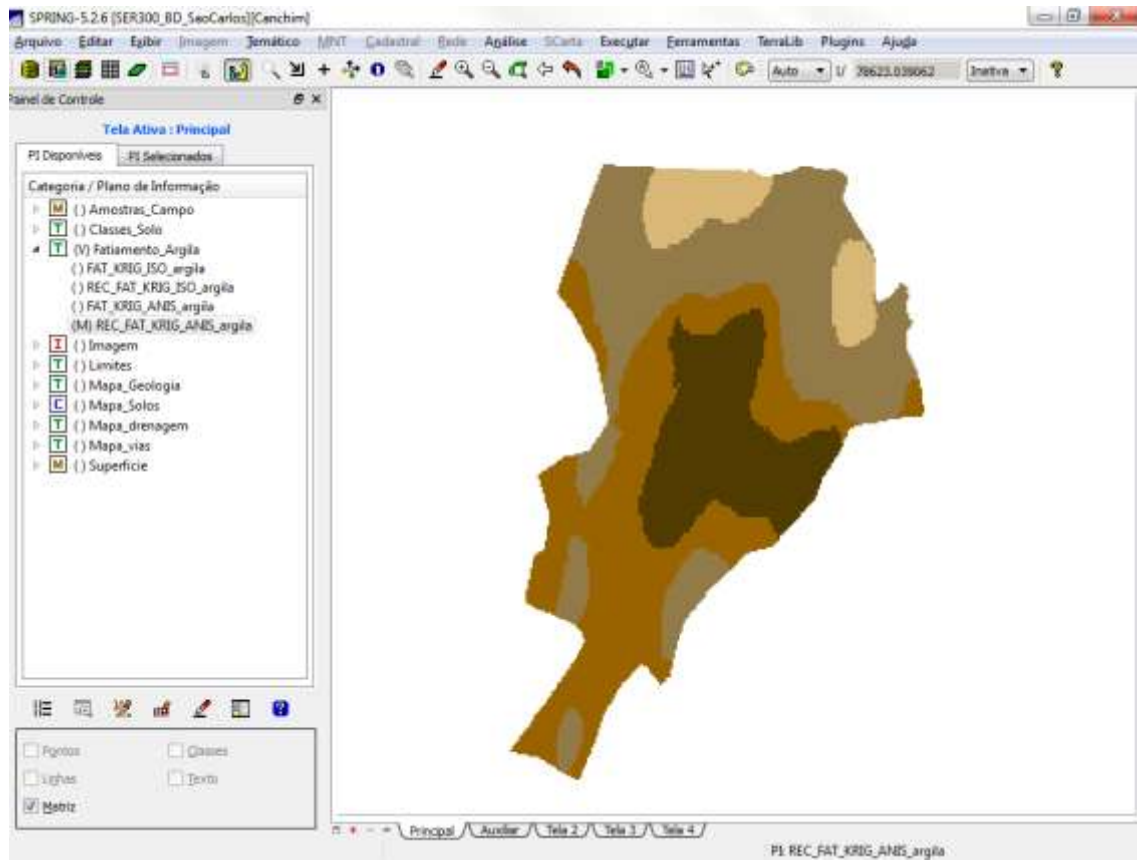


## 6.7 EXECUTAR RECORTE NA IMAGEM ORIUNDADOMODELO ANISOTRÓPICO





## 6.8 EXECUTAR FATIAMENTO E RECORTE NA GRADE DE KRIGEAGEM ORIUNDA DO MODELO ANISOTRÓPICO.



## 6.9 ANÁLISE DOS RESULTADOS

The screenshot displays a GIS application window titled 'SPRING-5.2.6 (SER300\_BD\_SocCarlos)(Canchim)'. The interface includes a menu bar, a toolbar, and a 'Painel de Controle' (Control Panel) on the left. The control panel shows a tree view of layers under 'Tela Ativa : Principal' and 'PJ Disponíveis'. The 'PJ Disponíveis' list includes:

- Amostras\_Campo
- Classes\_Solo (selected)
- solos (C)
- Fabiamento\_Argile
- Imagem
- Limites
- Mapa\_Geologia
- geologia (C)
- Mapa\_Solos
- Mapa\_drenagem
- Mapa\_vias
- Superficie

Below the list are checkboxes for 'Pontos', 'Linhas', 'Métros', 'Classes' (checked), and 'Texto'. The main map area shows a geographical area with various colored and hatched regions, representing different soil classes. A window titled 'LEGAL' is open in the foreground, showing a code editor with the following content:

```
Programa LEGAL  Editar  Executar  
-----  
atualiza_Terpla.olg  
1 // Atualização de  
2 {  
3 //DECLARAÇÕES  
4 }
```

The 'LEGAL' window also has a section for 'Erros de Sintaxe do Programa' (Syntax Errors of the Program), which is currently empty. The status bar at the bottom indicates 'PJ solos'.