



MINISTÉRIO DA CIÊNCIA E TECNOLOGIA
INSTITUTO NACIONAL DE PESQUISAS ESPACIAIS

Ministério da
Ciência, Tecnologia
e Inovação



DISCIPLINA DE INTRODUÇÃO AO GEOPROCESSAMENTO -SER 300

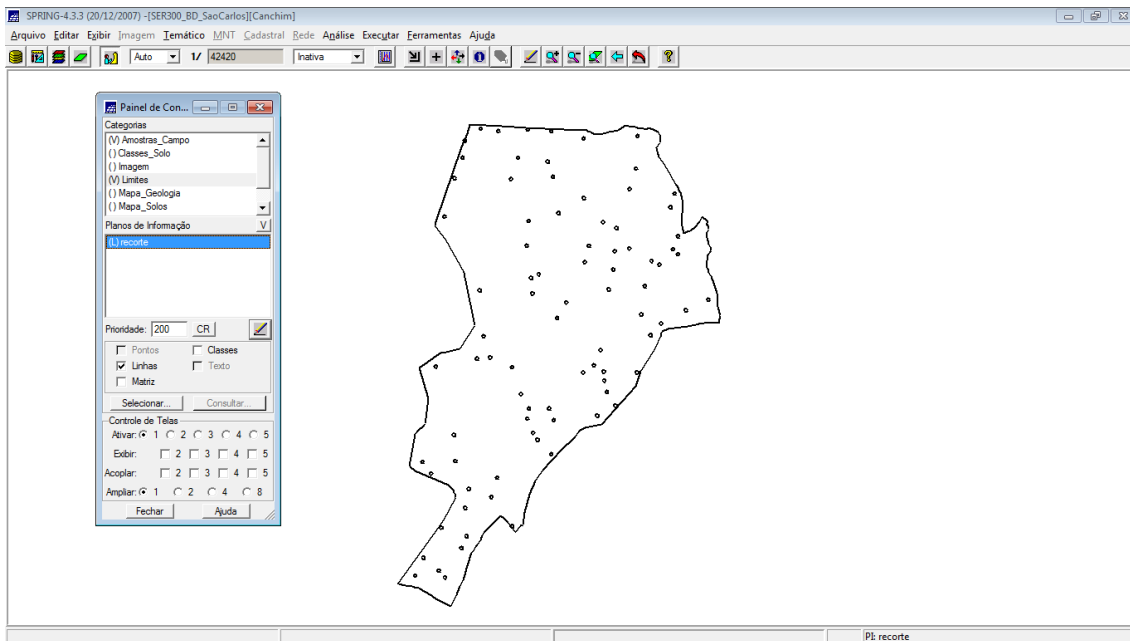
LABORATÓRIO 5- Geo-Estatística

Prof.Dr. Antônio Miguel Vieira Monteiro

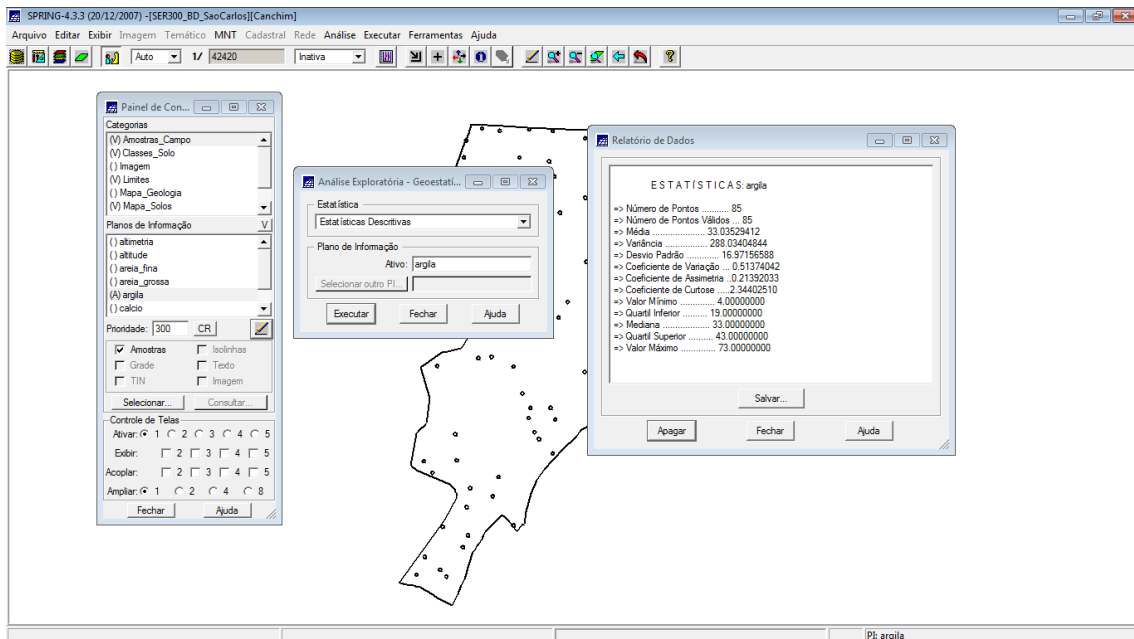
Acadêmico: Cleyton Gilmar Vilpert

São José dos Campos, maio de 2016

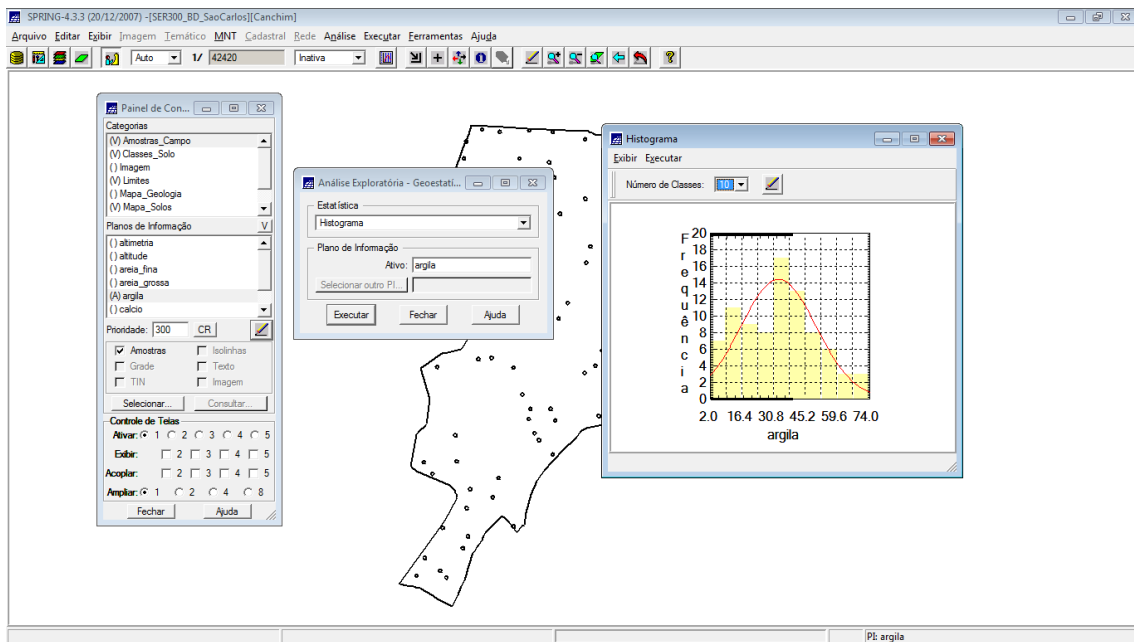
Ativando o projeto:



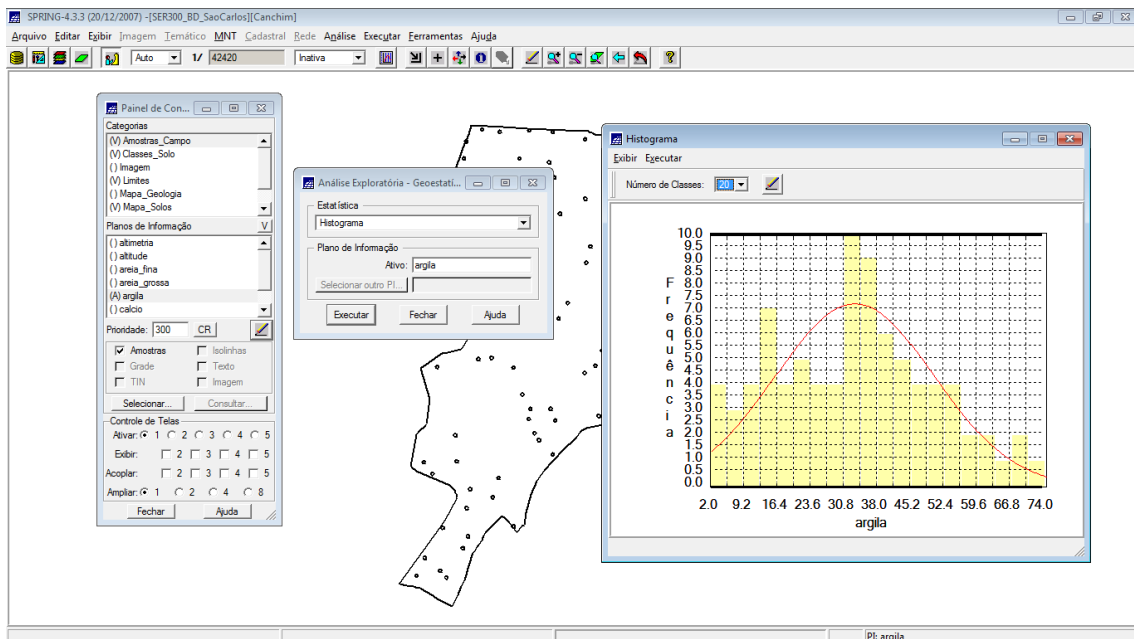
Análise exploratório do teor de argila:



Histograma dos teores de argila:



Alterando o número de classes:



Parâmetros do semi-variograma:

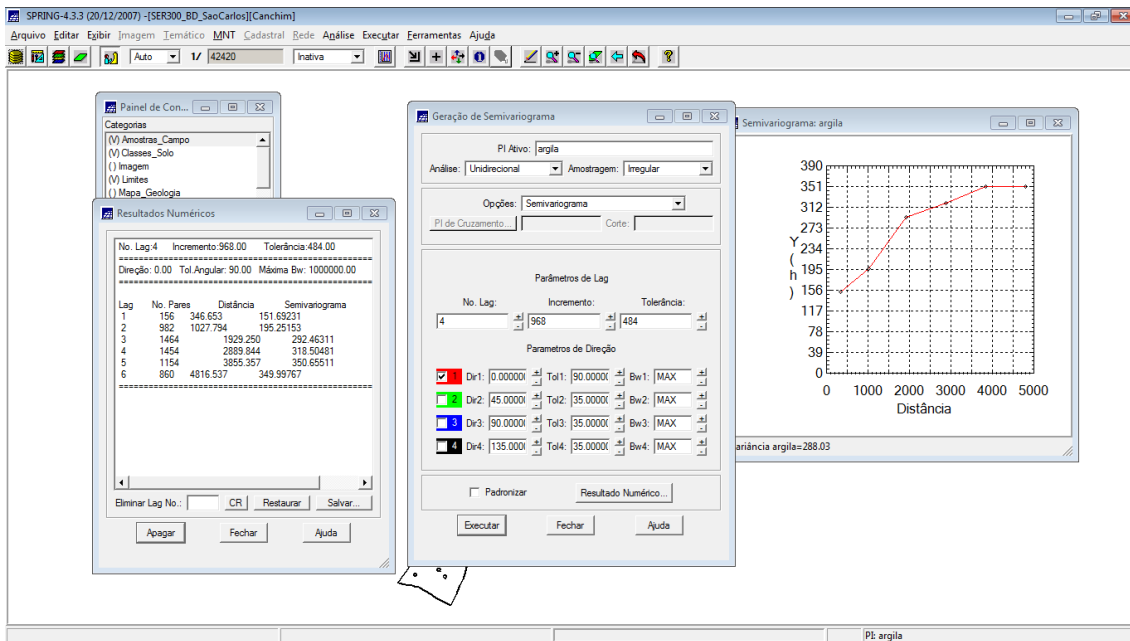
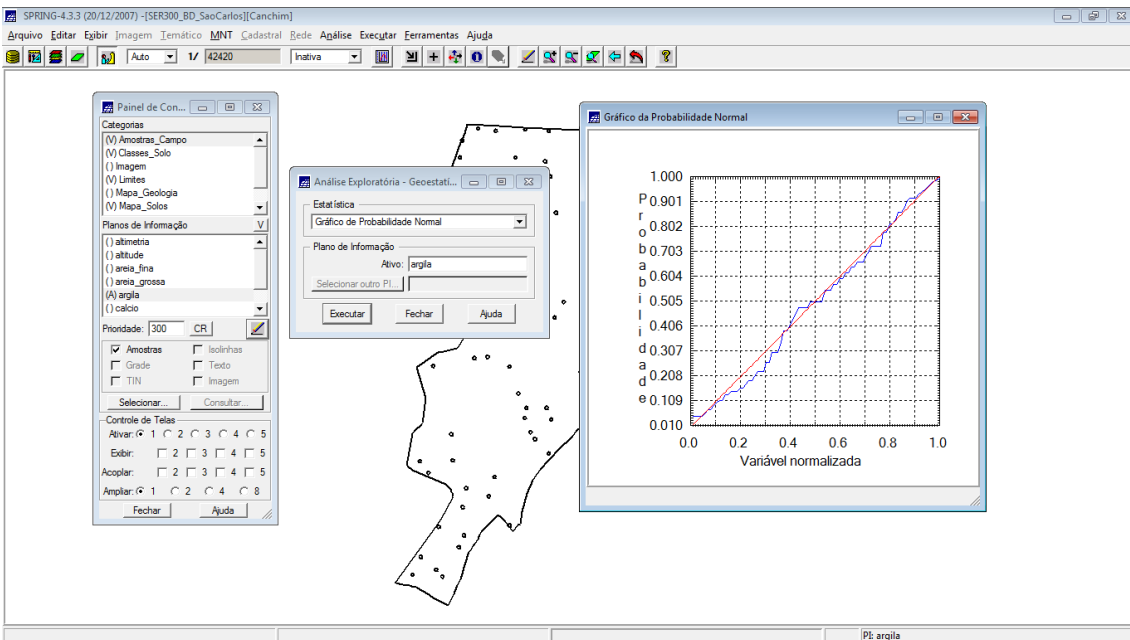
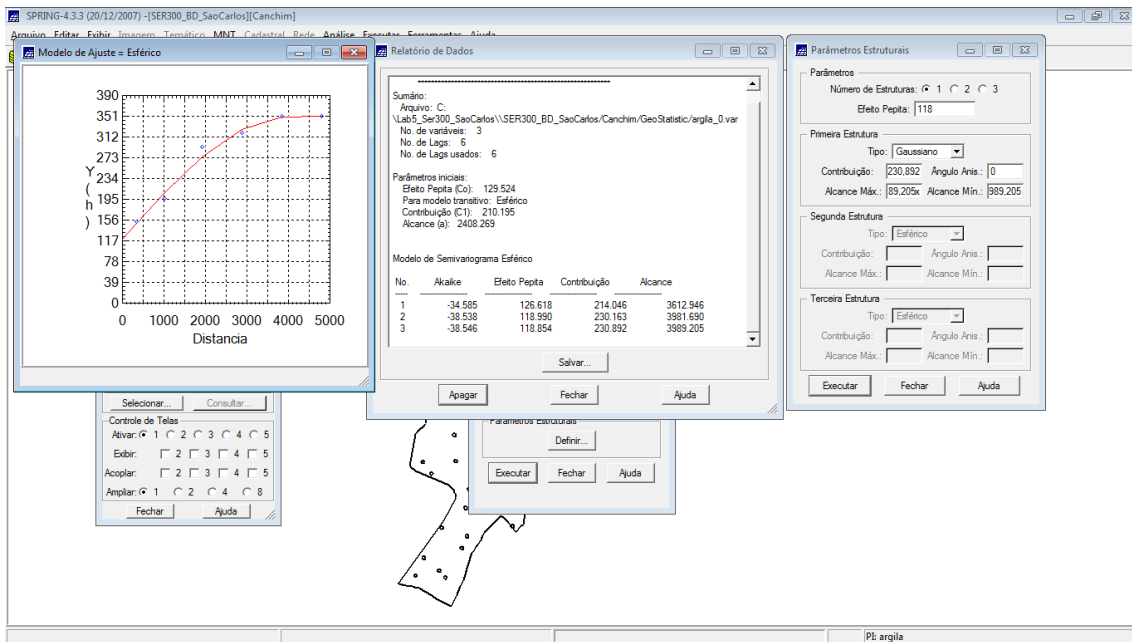


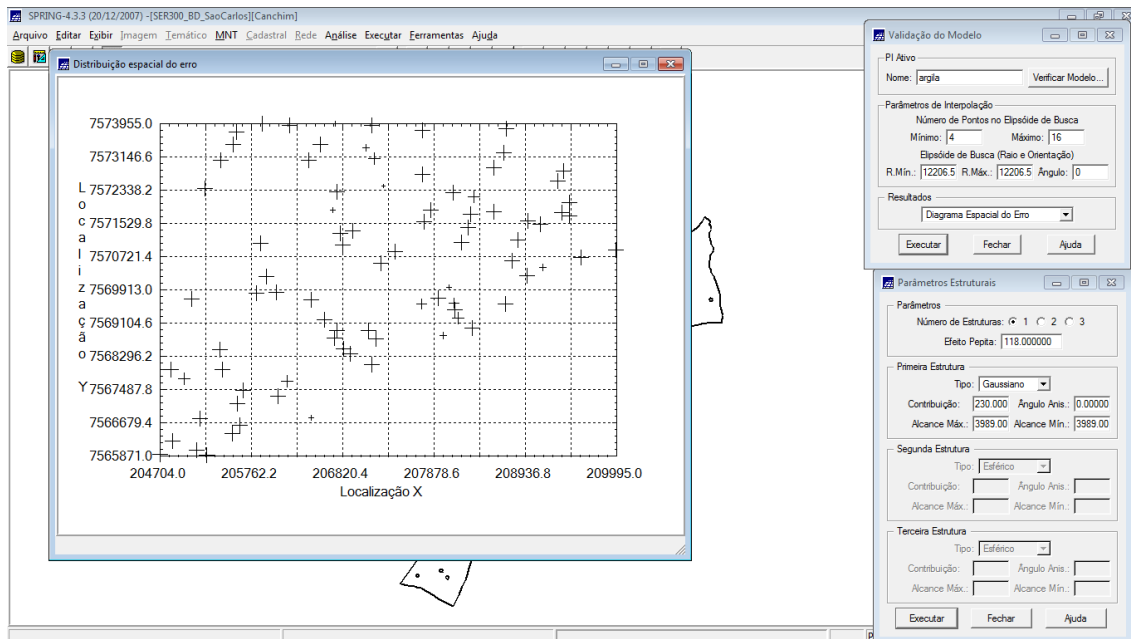
Gráfico de probabilidade normal:



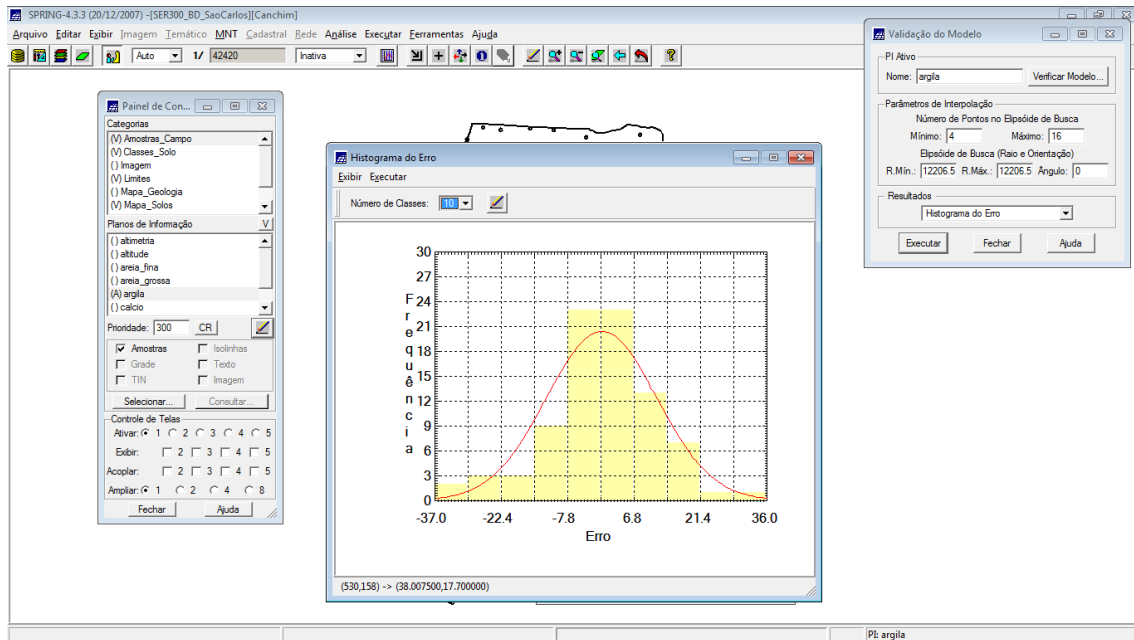
Ajuste do modelo no semi-variograma:



Análise da distribuição do erro:



Histograma do erro:



Demonstrativo da Estatística do erro:

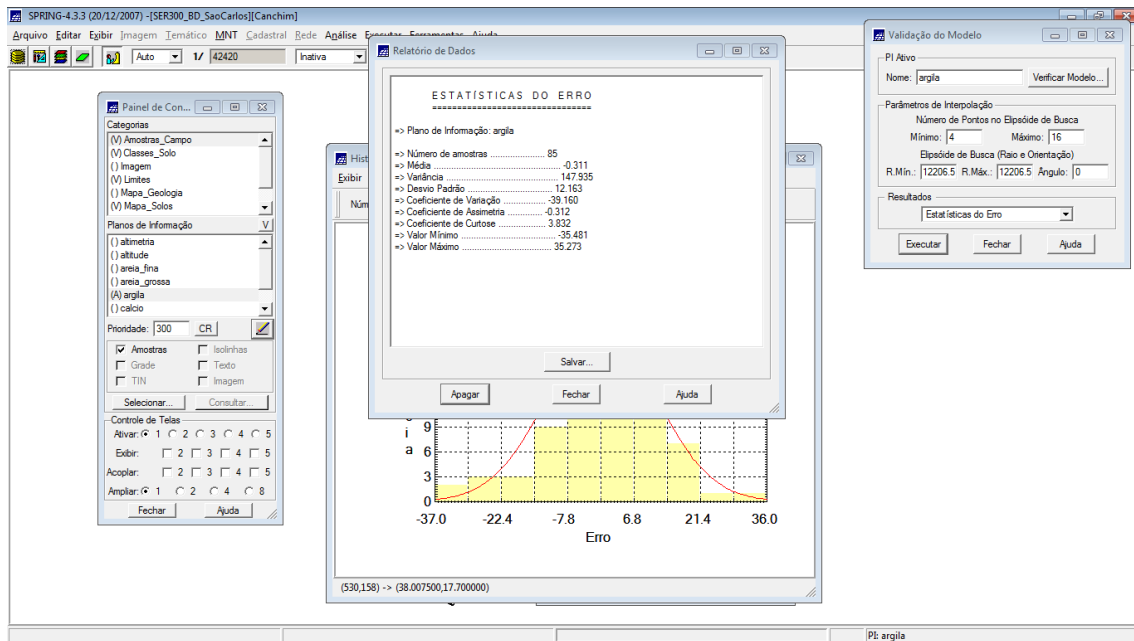
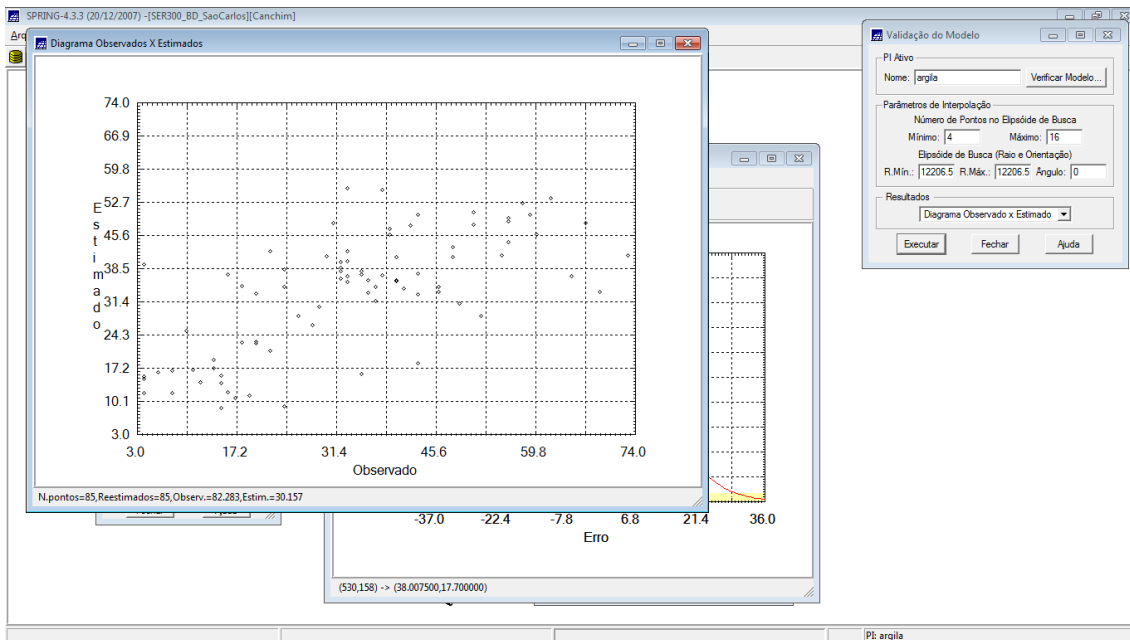
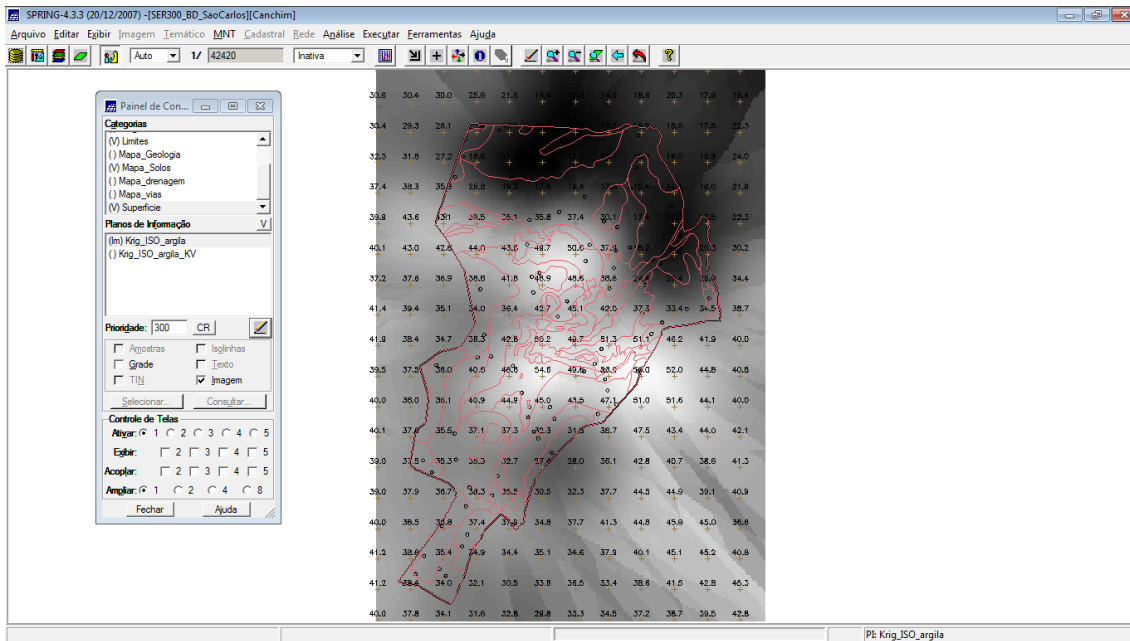


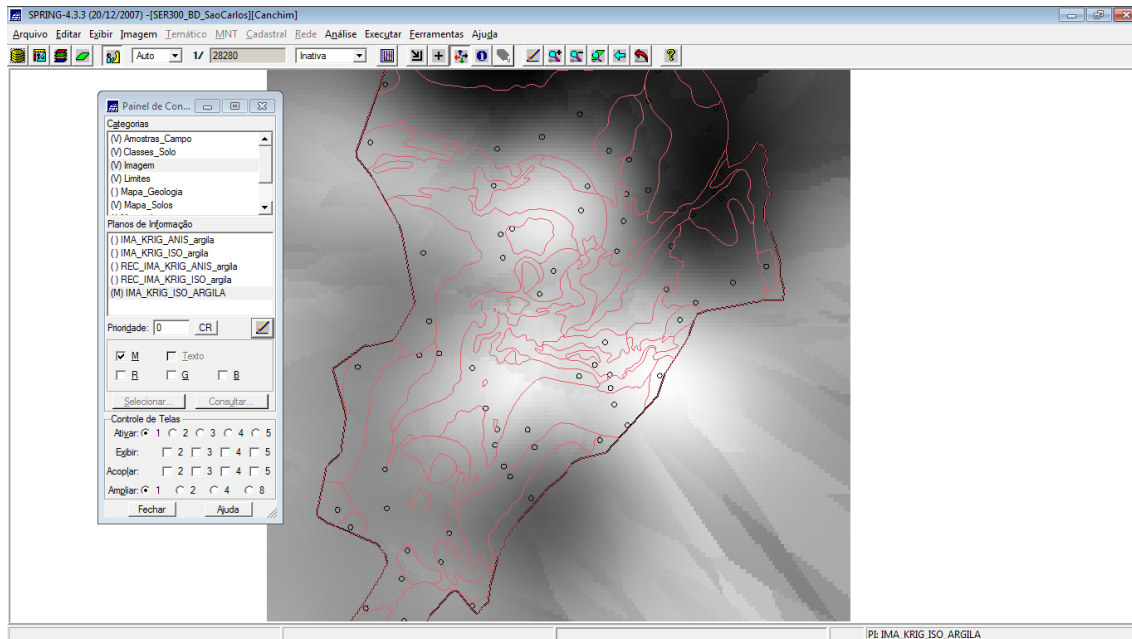
Diagrama de observação versus estimado:



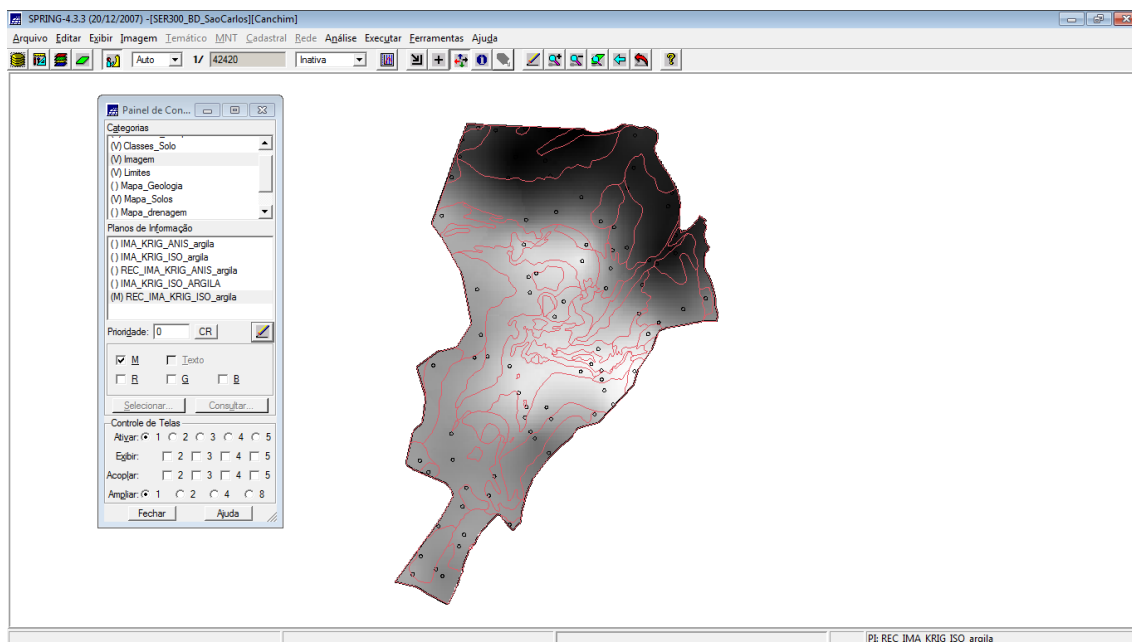
Resultado da krigagem:



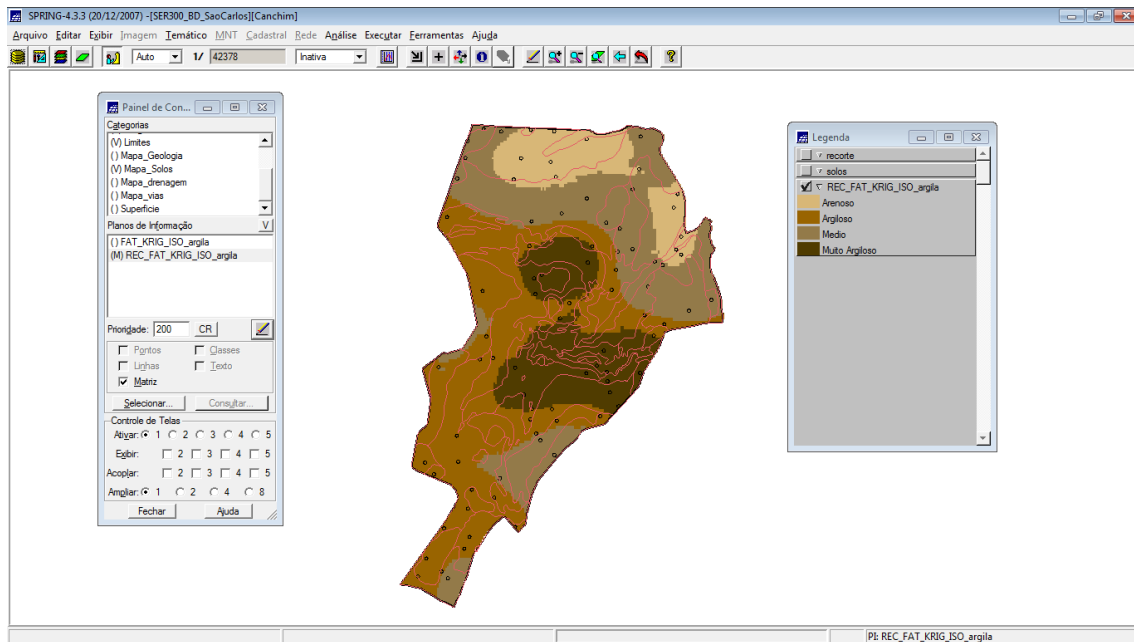
Geração do MNT a partir da krigagem:



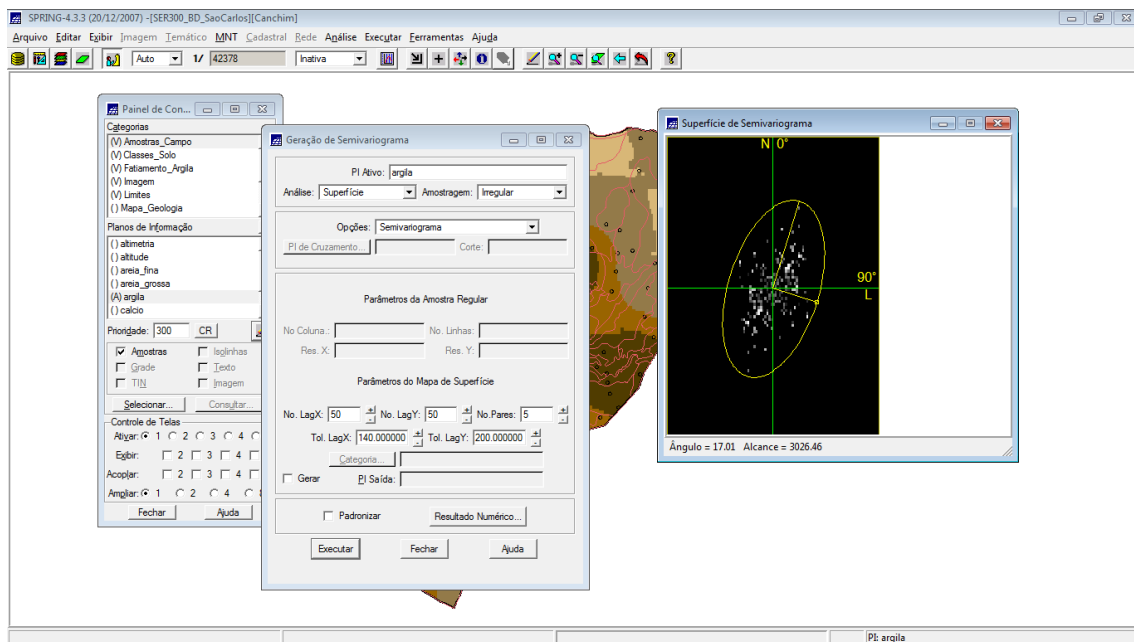
Recorte do limite da área de estudo:



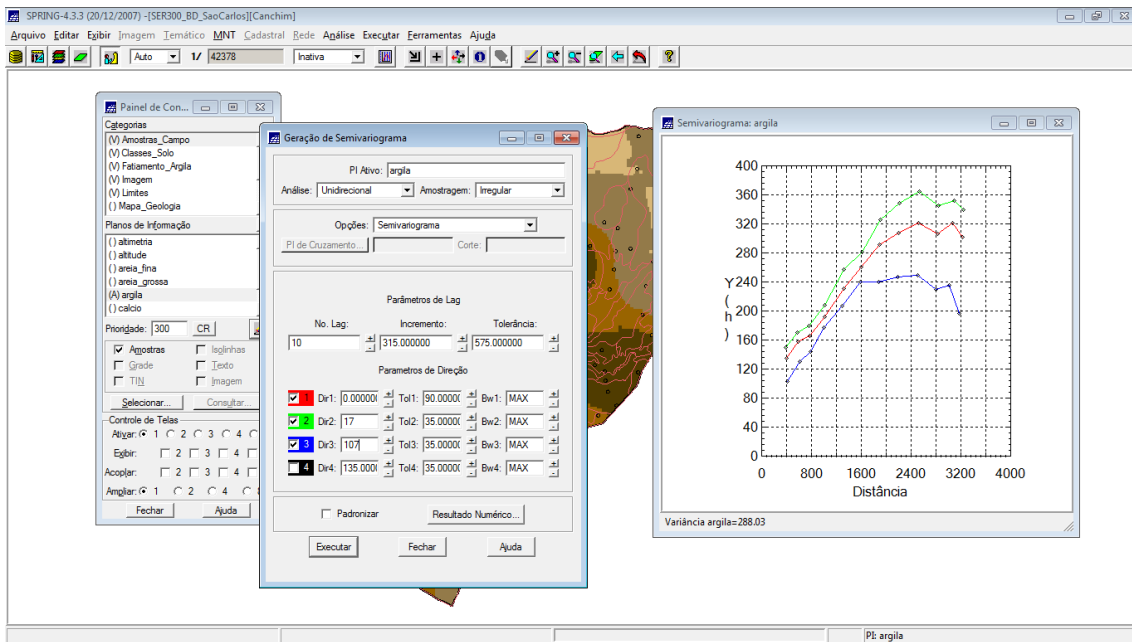
Fatiamento do MNT em 4 classes:



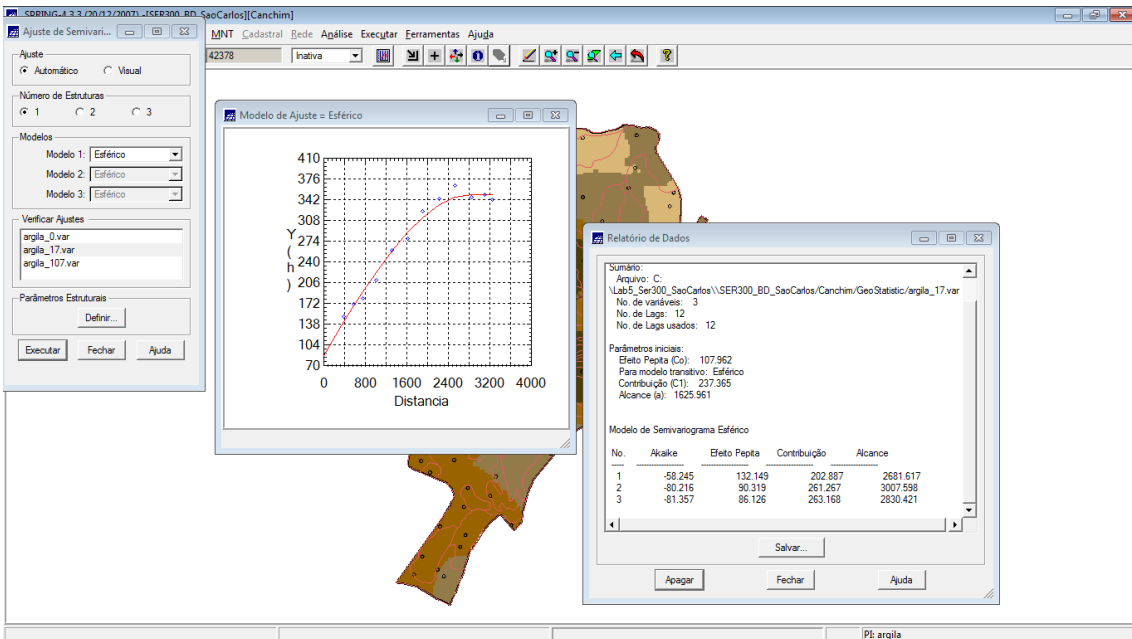
Ângulo de isotropia:



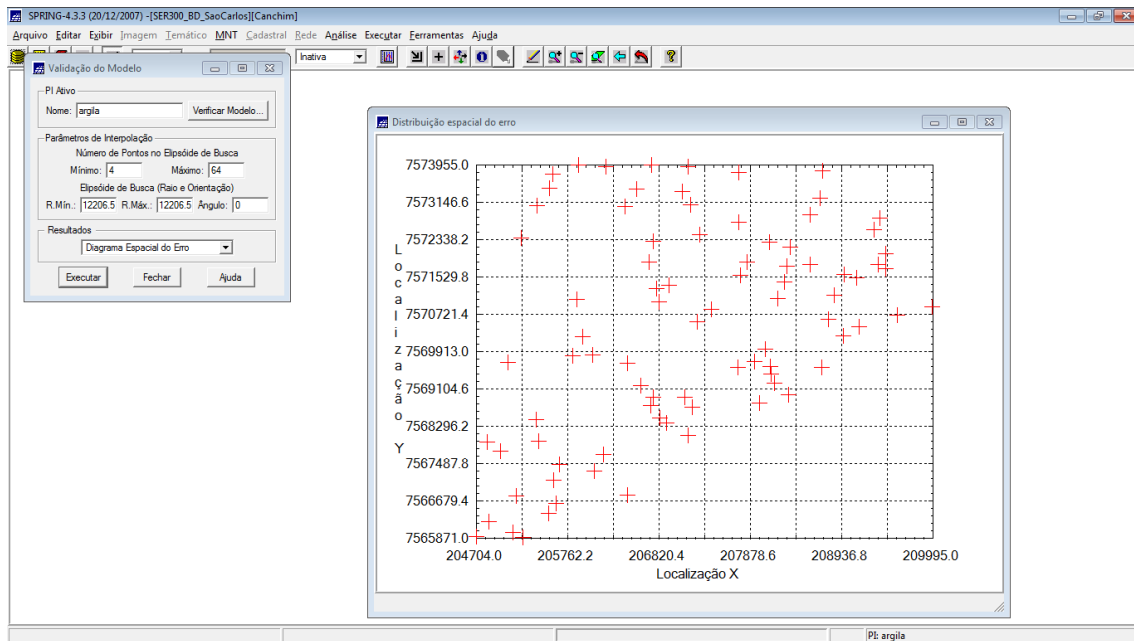
Geração do semi-variograma do semi-direcional:



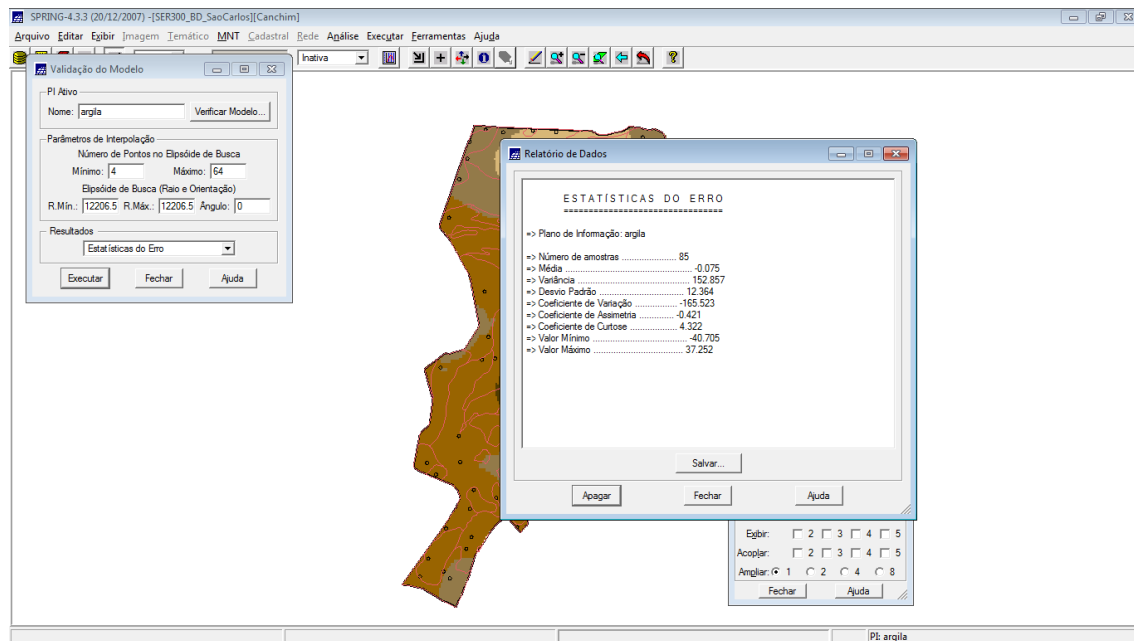
Ajuste do modelo semi-esférico:



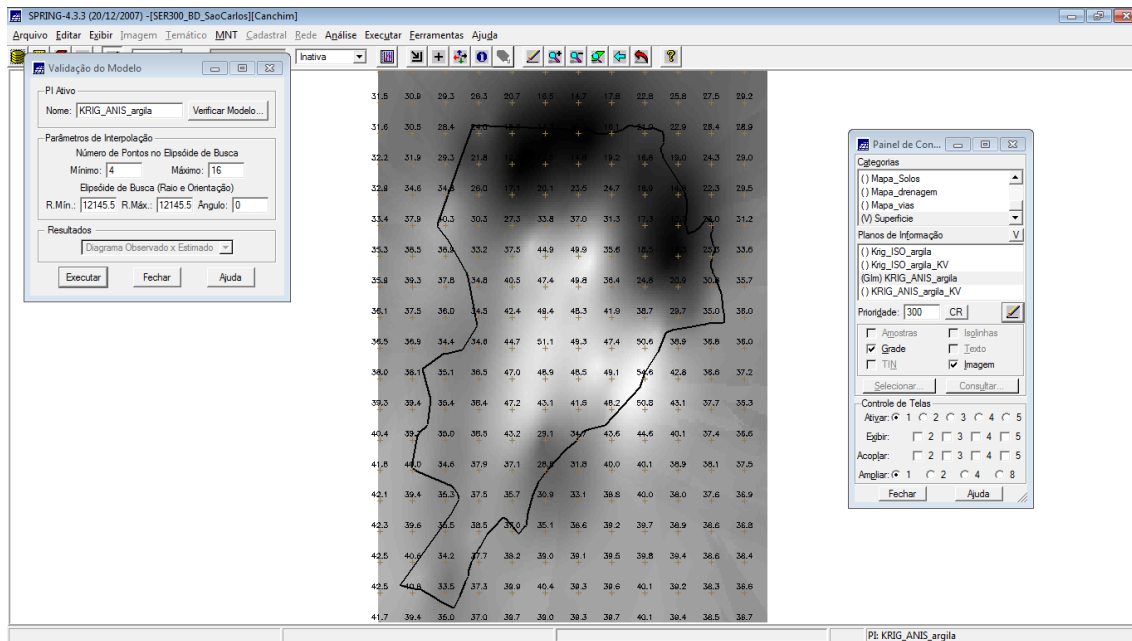
Distribuição espacial do erro:



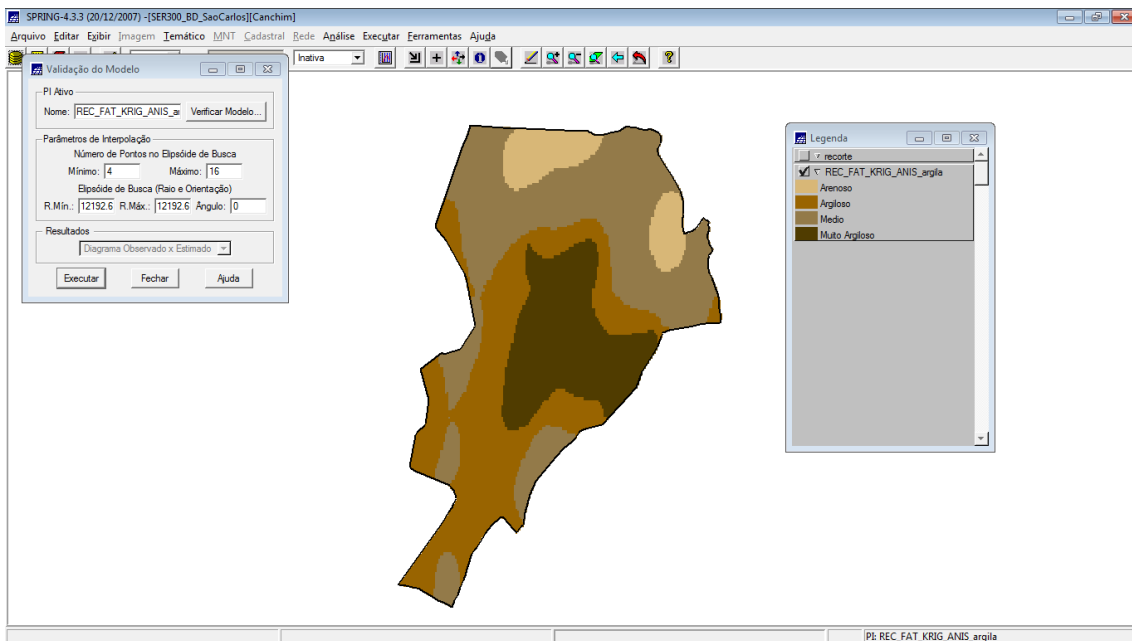
Estatística do erro:



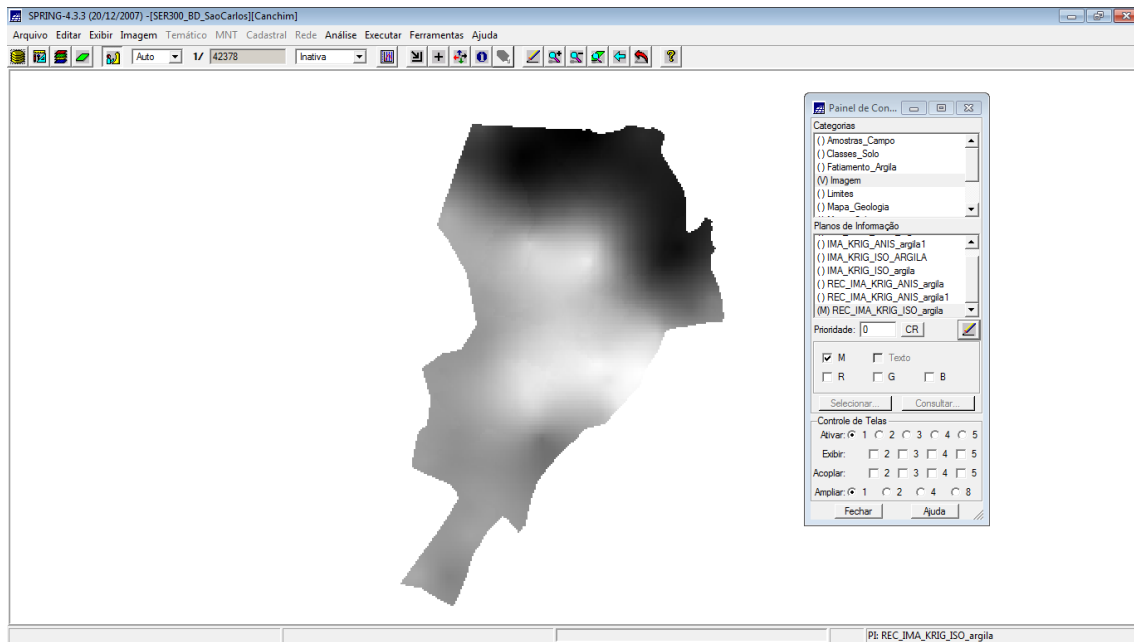
Validação do modelo de teor de argila por krigagem anisotrópica:



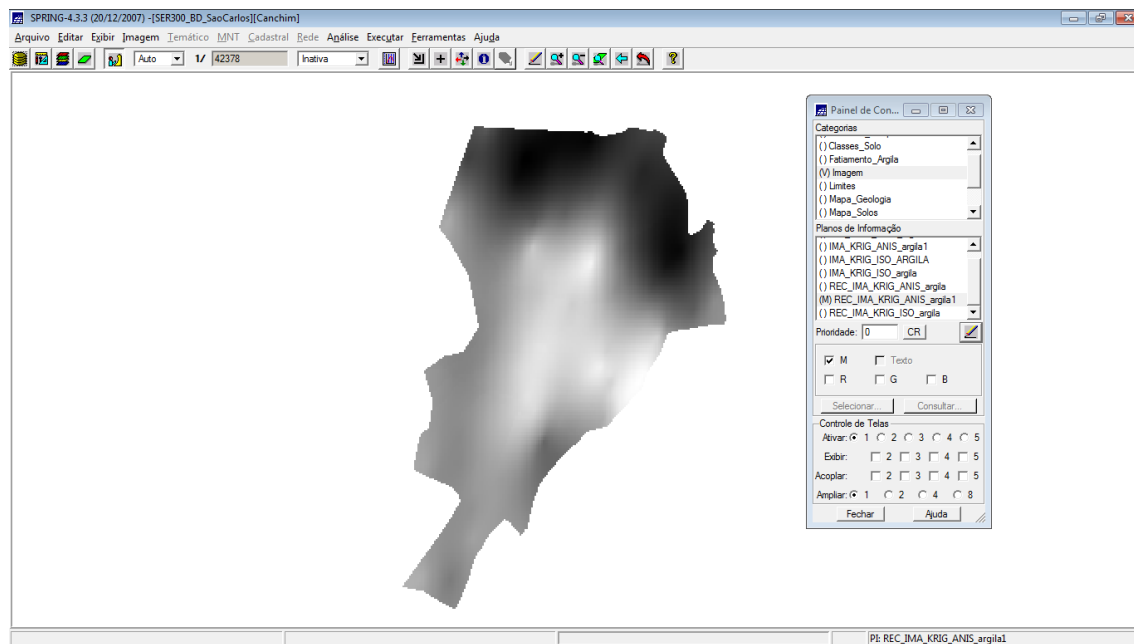
Recorte da área de estudo e fatiamento:



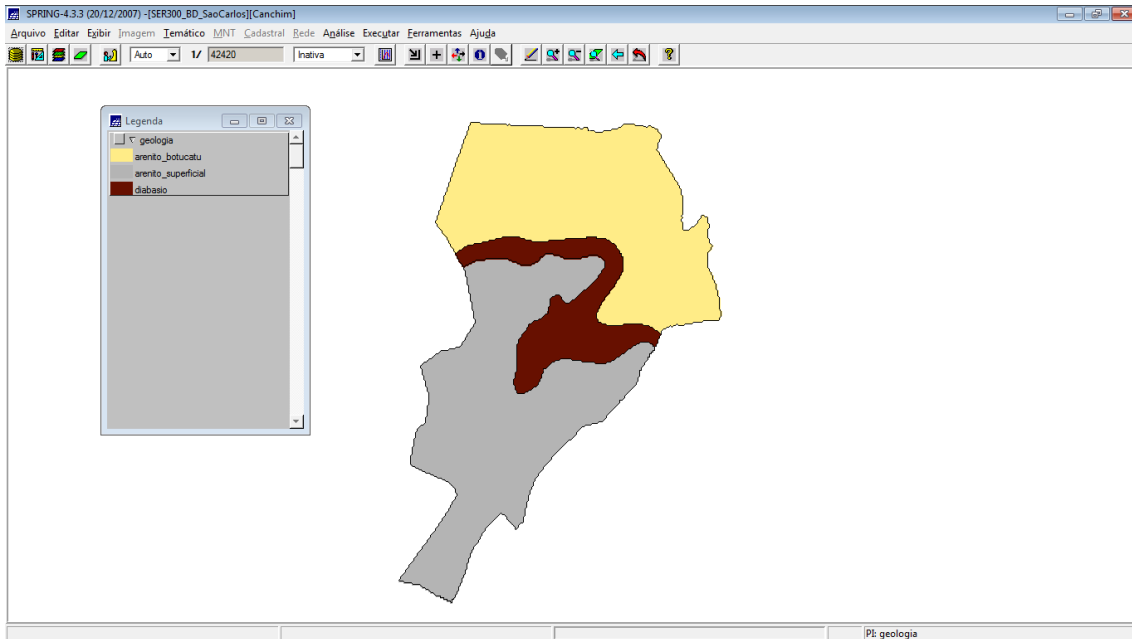
Resultado da krigagem isotrópica:



Resultado da krigagem anisotrópica:



Mapa geológico:



Mapa de solos:

