

Painel de Controle

Tela Ativa : Tela 4

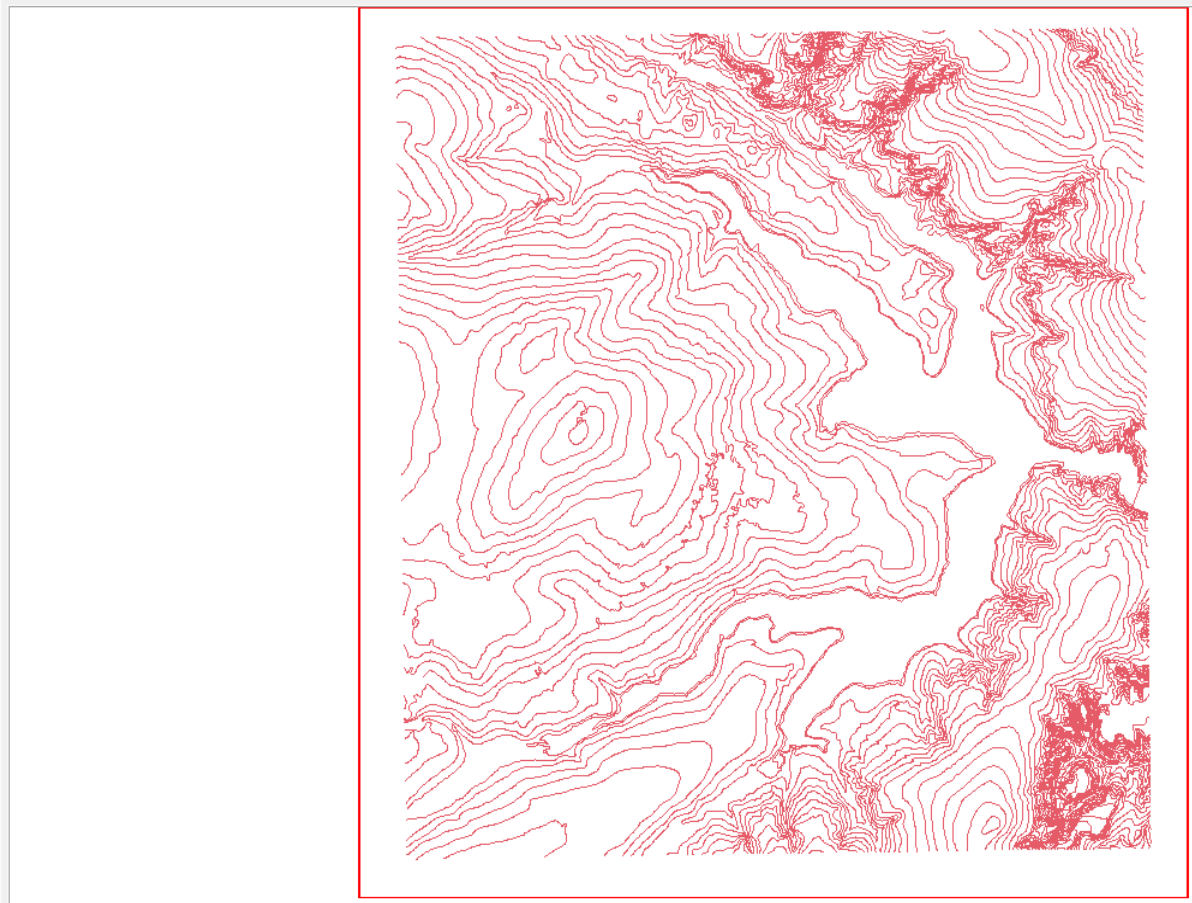
PI Disponíveis | PI Selecionados

Categoria / Plano de Informação

- (V) Altimetria
 - (A) Mapa_Altimetrico



- Amostras
- Grade
- TIN
- Isolinhas
- Texto
- Imagem



Painel de Controle

Tela Ativa : Tela 4

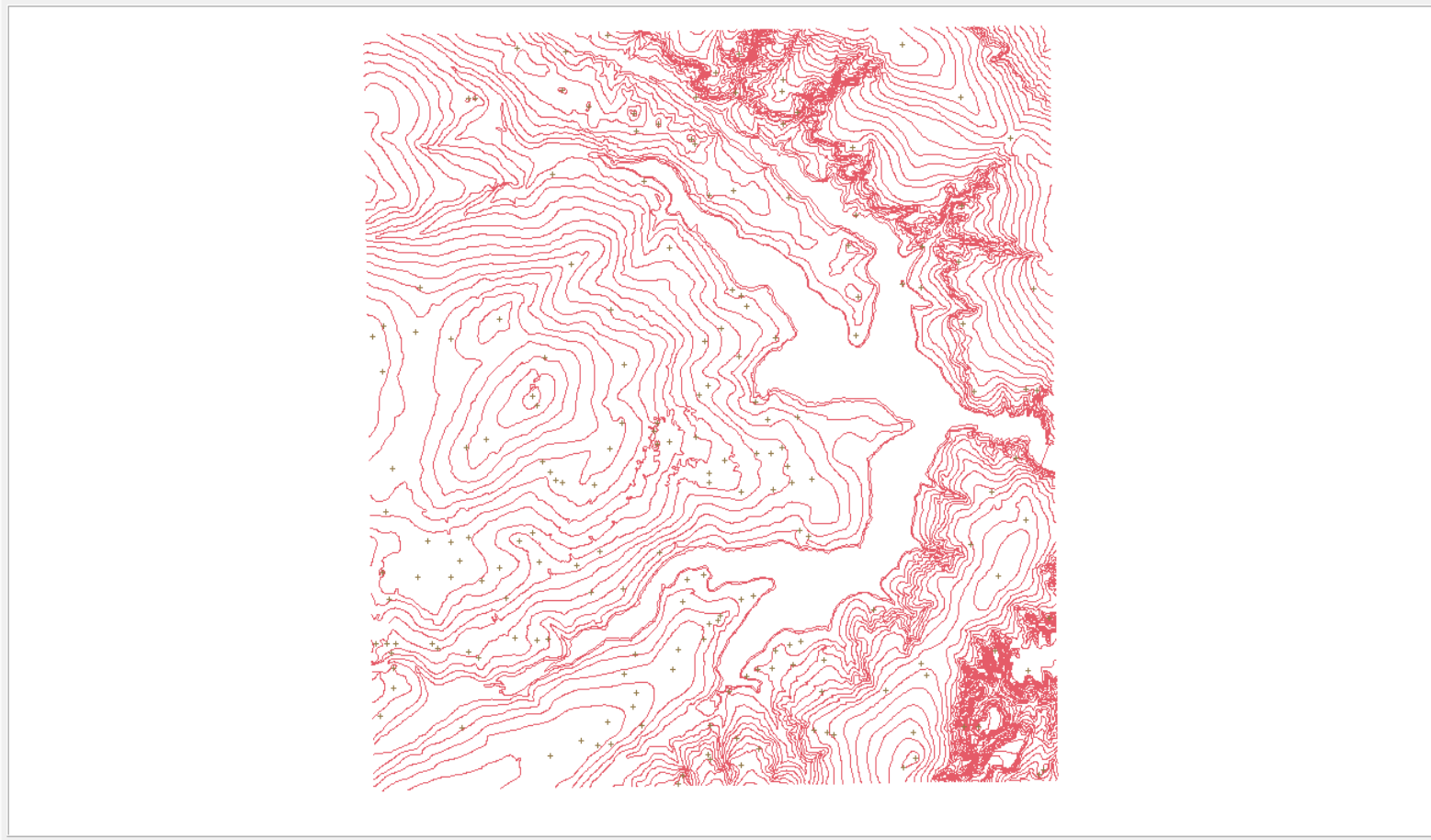
PI Disponíveis | PI Seleccionados

Categoria / Plano de Informação

- [-] M (V) Altimetria
 - [+] (A) Mapa_Altimétrico



- Amostras
- Grade
- TIN
- Isolinhas
- Texto
- Imagem



Painel de Controle

Tela Ativa : Tela 4

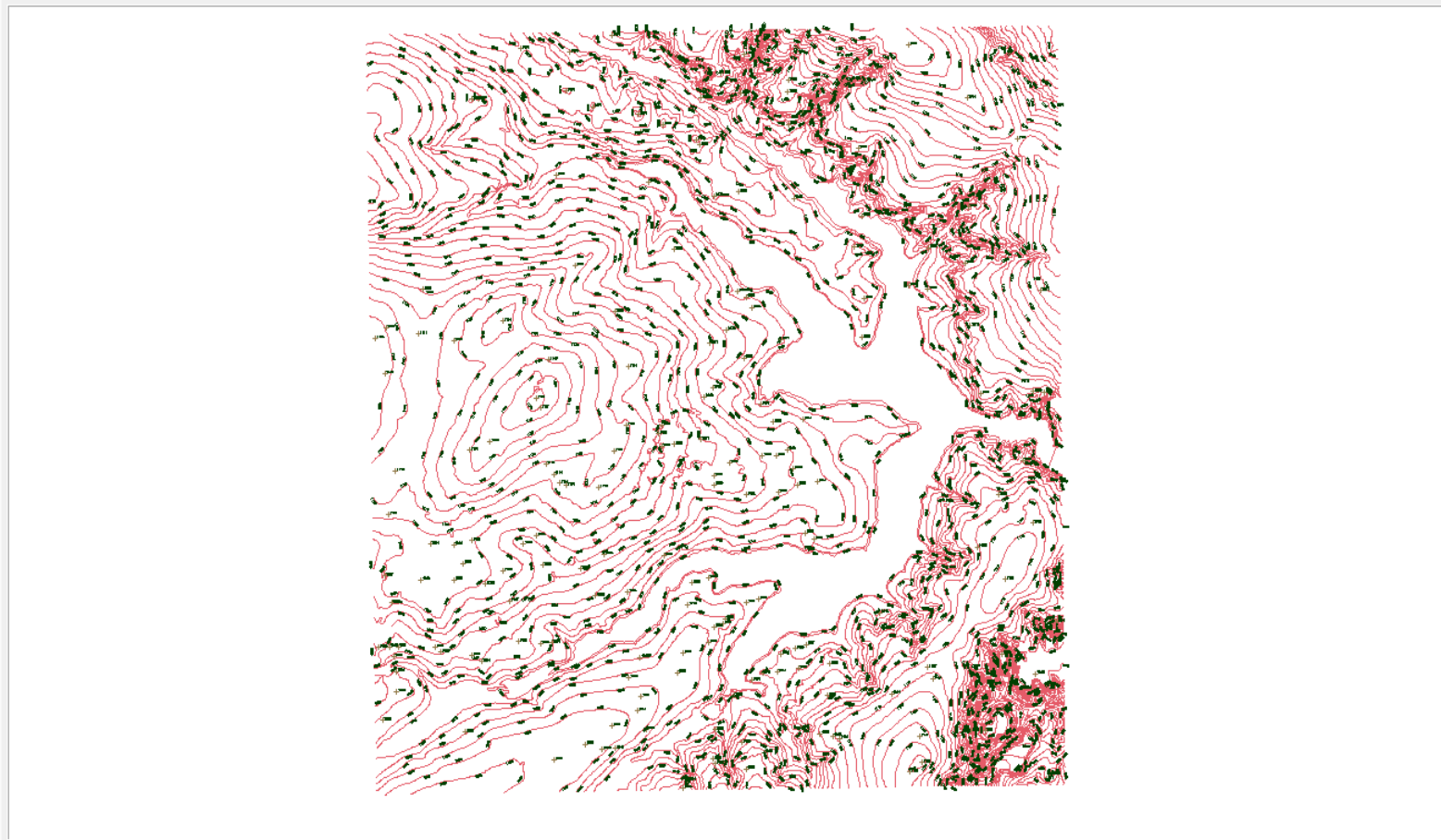
PI Disponíveis | PI Seleccionados

Categoria / Plano de Informação

- (V) Altimetria
 - (AT) Mapa_Altimetrico



- Amostras
- Grade
- TIN
- Isolinhas
- Texto
- Imagem



Painel de Controle

Tela Ativa : Tela 4

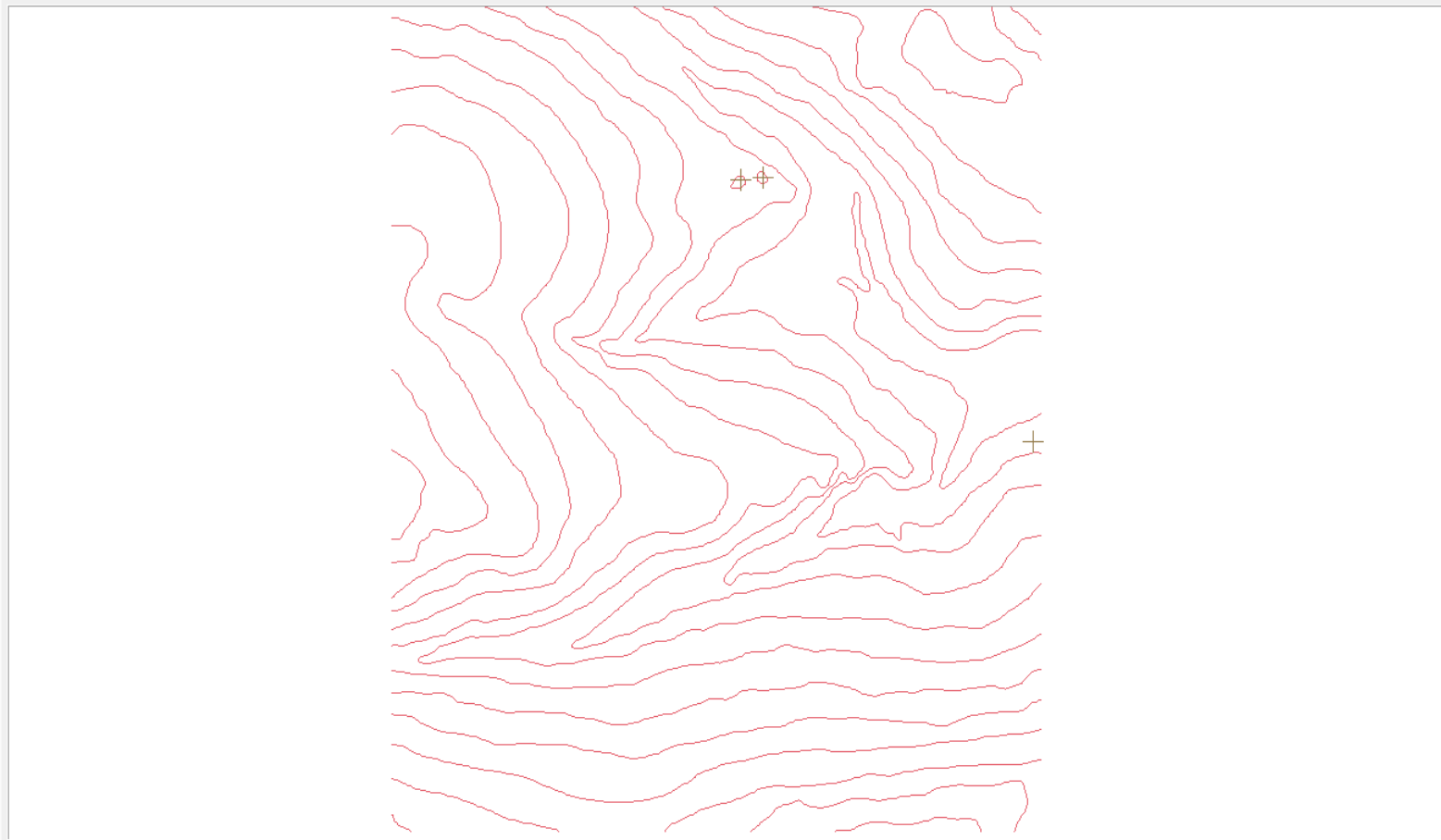
PI Disponíveis | PI Selecionados

Categoria / Plano de Informação

- (V) Altimetria
 - () Mapa_Altimétrico
 - (A) MNT_teste



- Amostras
- Grade
- TIN
- Isolinhas
- Texto
- Imagem



Painel de Controle

Tela Ativa : Tela 4

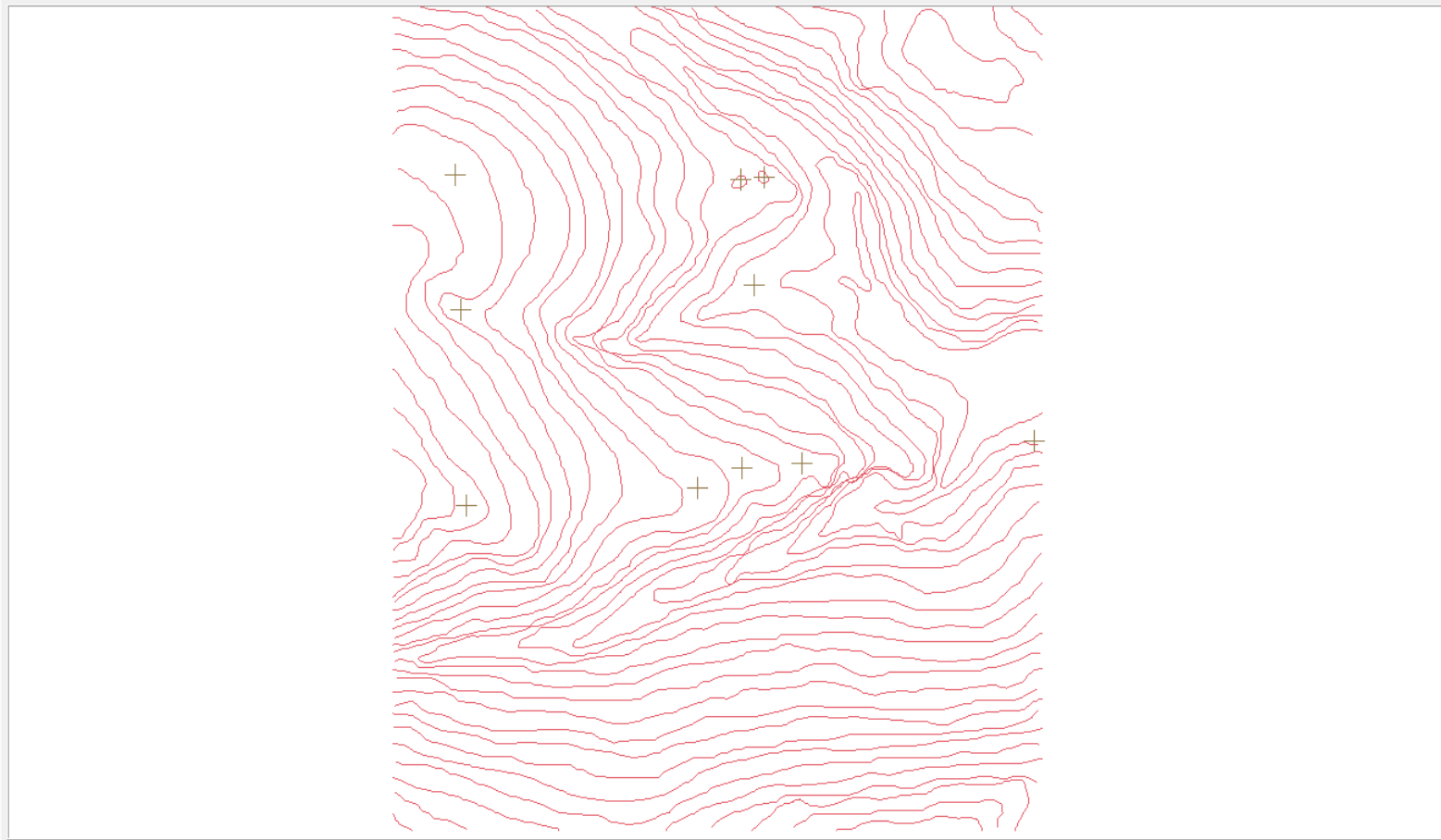
PI Disponíveis | PI Seleccionados

Categoria / Plano de Informação

- (M) (V) Altimetria
 - () Mapa_Altimétrico
 - (A) MNT_teste



- Amostras
- Grade
- TIN
- Isoglinhas
- Texto
- Imagem



Panel de Controle

Tela Ativa : Tela 4

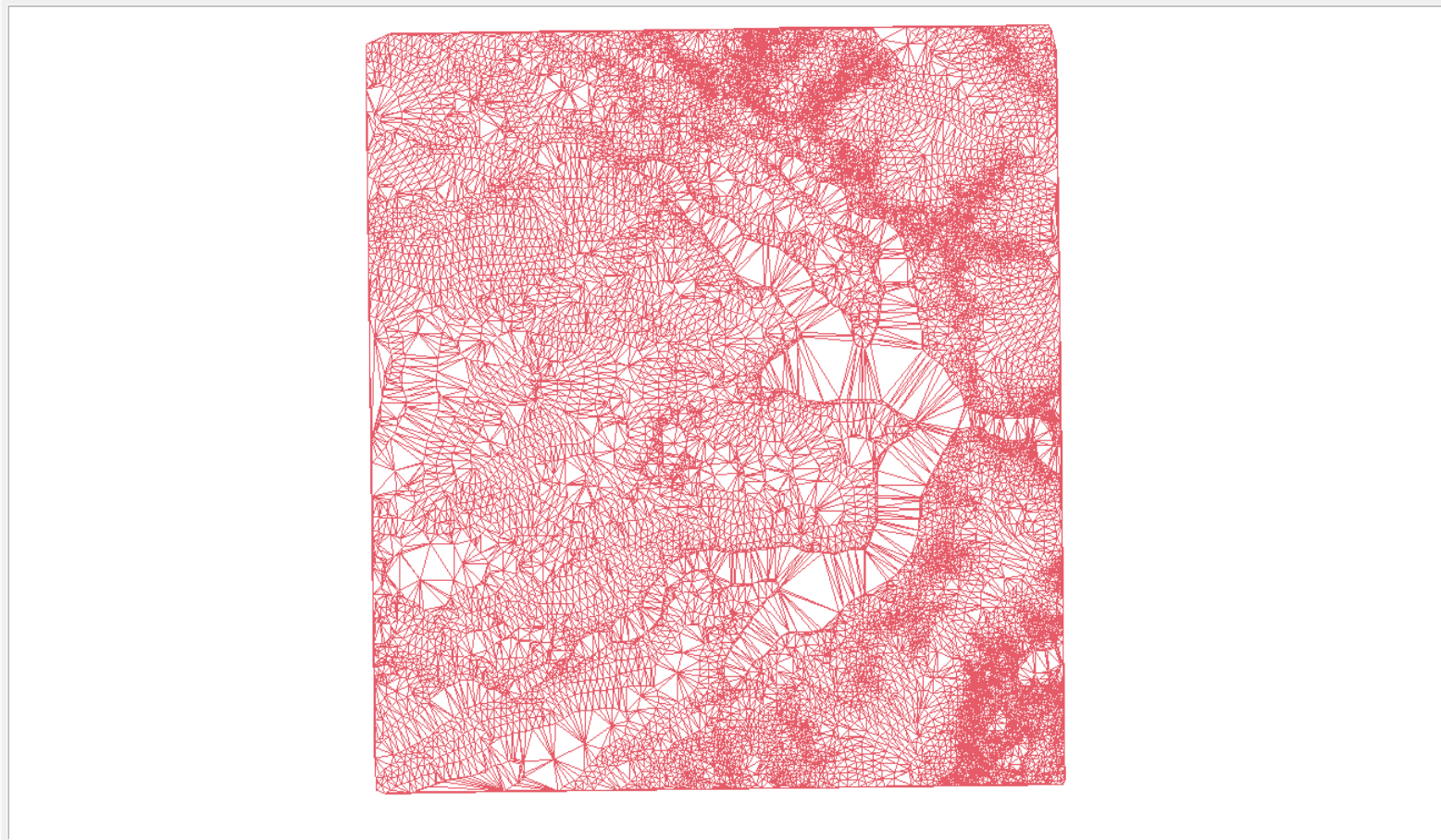
PI Disponíveis | PI Selecionados

Categoria / Plano de Informação

- (V) Altimetria
 - Mapa_Altimetrico
 - MNT-Tin



- Amostras
- Grade
- TIN
- Isolinhas
- Texto
- Imagem



Painel de Controle

Tela Ativa : Tela 4

PI Disponíveis | PI Selecionados

Categoria / Plano de Informação

- (M) Altimetria
 - Mapa_Altimetrico
 - MNT-Tin
- (V) Corpos_Agua
 - (L) Mapa_rios-lq



- Pontos
- Linhas
- Matriz
- Classes
- Texto



Painel de Controle

Tela Ativa : Tela 4

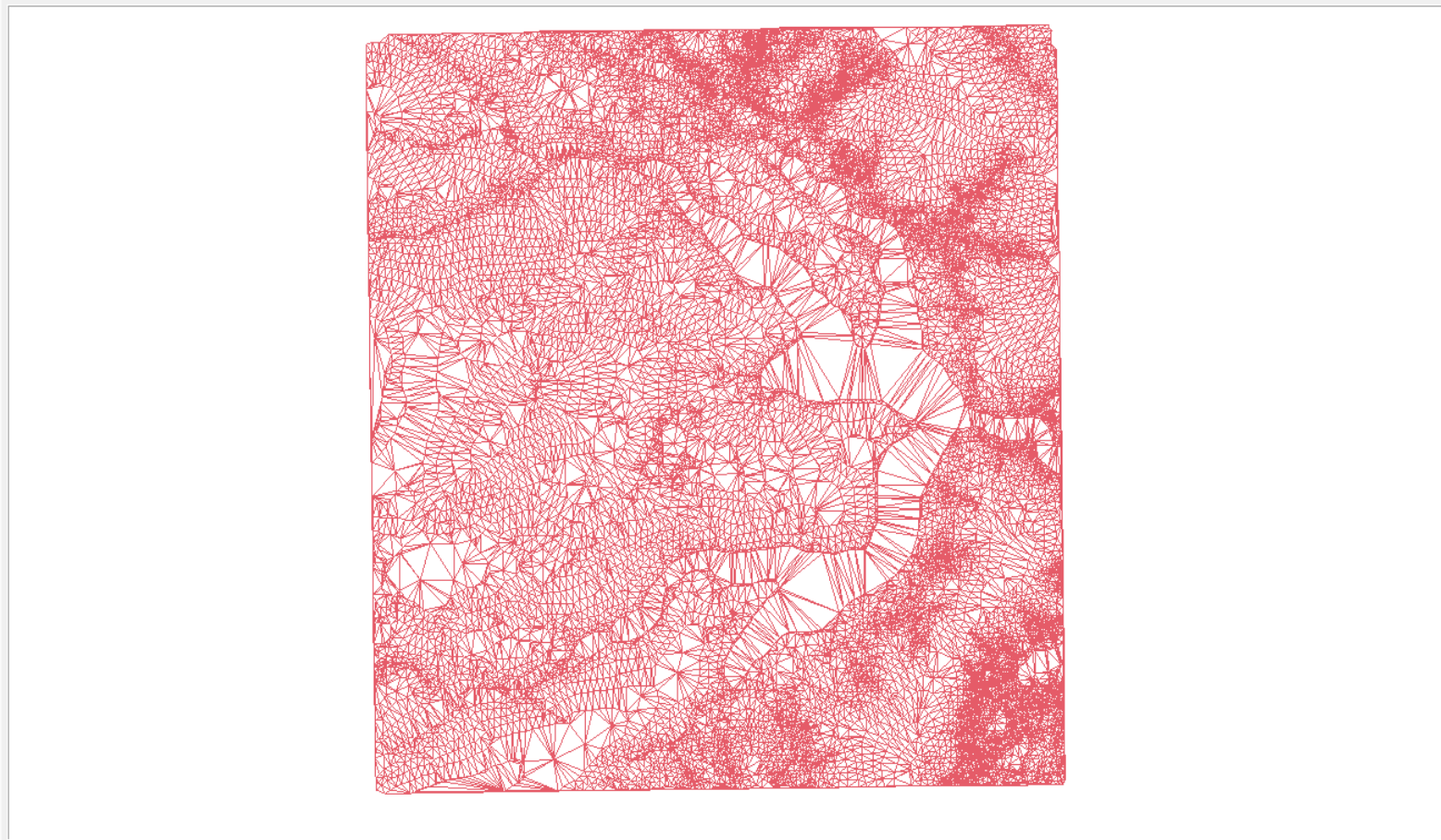
PI Disponíveis | PI Selecionados

Categoria / Plano de Informação

- (V) Altimetria
 - Mapa_Altimetrico
 - MNT-Tin
 - MNT-tin-brk
- (T) Corpos_Agua
 - Mapa_rios-lq



- Amostras
- Grade
- TIN
- Isolinhas
- Texto
- Imagem



Painel de Controle

Tela Ativa : Tela 4

PI Disponíveis | PI Selecionados

Categoria / Plano de Informação

- (V) Altimetria
 - Mapa_Altimetrico
 - MNT-Tin
 - MNT-tin-brk
 - (G) MNT-grd
- (T) Corpos_Agua



- Amostras
- Isolinhas
- Grade
- Texto
- TIN
- Imagem

1045.0	1048.3	1030.0	1050.0	1064.5	1048.7	1020.0	1039.7	1116.5	1110.0	1124.1	1180.0	1179.5	1218.7	1197.8	1140.9	1050.0	1034.8
1064.4	1080.0	1062.7	1033.7	1031.1	1066.4	1060.0	1049.8	1010.0	1060.1	1082.5	1075.8	1138.8	1170.4	1186.4	1166.6	1103.6	1075.1
1095.4	1066.7	1080.3	1020.0	1010.0	1028.8	1040.2	1049.2	1053.9	1000.1	1012.5	1078.8	1105.9	1128.7	1145.2	1180.4	1155.4	1144.9
1110.0	1108.0	1078.7	1058.4	1035.3	1020.0	1020.0	1001.9	1008.5	1030.0	1015.2	1001.1	1027.2	1106.8	1102.7	1090.1	1165.5	1175.2
1089.7	1079.9	1057.6	1039.9	1046.7	1050.0	1059.9	1034.7	1000.0	998.0	1025.6	1010.0	998.2	1059.6	1022.1	1109.9	1169.4	1180.0
1094.9	1069.5	1080.0	1083.8	1090.0	1098.7	1080.0	1038.9	1035.4	998.1	988.0	1010.0	1010.0	998.0	1030.7	1089.9	1160.6	1174.8
1126.0	1122.0	1110.0	1120.2	1140.0	1100.5	1090.6	1070.9	1049.5	1019.0	1002.2	998.0	1015.8	998.0	1010.3	1091.2	1140.0	1154.8
1133.7	1132.0	1114.9	1130.0	1140.0	1140.1	1124.8	1109.2	1069.7	1037.8	1002.0	988.0	998.0	998.0	1025.4	1082.0	1110.0	1125.1
1132.2	1130.3	1120.0	1130.0	1158.3	1160.9	1129.9	1100.0	1059.9	1032.9	999.1	998.0	998.7	998.0	998.0	1050.1	1049.9	1084.7
1130.0	1129.3	1120.0	1141.1	1158.0	1139.9	1129.9	1110.0	1080.0	1058.3	1038.1	1020.5	1010.0	1001.5	999.2	998.0	998.0	1035.2
1115.3	1115.9	1119.9	1141.9	1125.1	1112.5	1119.9	1098.6	1061.7	1060.0	1044.6	1032.4	1010.0	998.0	1030.0	1055.3	1069.8	1025.1
1085.1	1099.1	1107.3	1103.7	1087.9	1090.4	1085.7	1079.6	1048.9	1031.2	1023.9	1030.0	1012.0	998.9	1050.4	1092.5	1101.4	1075.0
1080.0	1062.0	1085.5	1094.8	1081.1	1068.2	1059.6	1030.2	998.0	998.0	988.9	998.0	998.8	1000.5	1040.0	1107.2	1099.4	1050.1
1075.1	1080.0	1090.0	1077.7	1060.2	1038.4	1029.0	998.1	1016.3	1013.5	998.0	998.0	1015.2	1019.9	1080.3	1110.0	1066.5	1050.0
1055.3	1055.1	1050.0	1044.0	1034.3	1019.8	988.0	1011.9	1036.1	999.5	1003.6	1014.8	1030.4	1070.0	1100.0	1040.7	1040.0	1040.0
1050.0	1050.0	1020.7	1010.0	1000.0	1028.7	1040.0	1040.7	1030.0	1000.0	1010.0	1049.7	1071.7	1115.0	1100.0	858.6	870.0	965.0
1029.8	1020.0	1010.0	1030.3	1050.0	1050.0	1058.2	1033.9	1010.0	1020.4	1024.8	1090.0	1119.8	1143.9	1100.4	1020.2	979.8	985.0
1024.9	1021.8	1050.1	1080.0	1060.0	1053.0	1029.3	1028.8	1069.9	1069.8	1071.0	1049.8	1119.5	1155.3	1069.8	1029.4	949.9	954.4
1040.0	1045.5	1060.0	1060.0	1060.0	1050.0	1020.0	1044.8	1072.4	1085.0	1085.4	1095.0	1115.0	1150.0	1084.9	1010.0	940.0	940.0

Painel de Controle

Tela Ativa : Tela 4

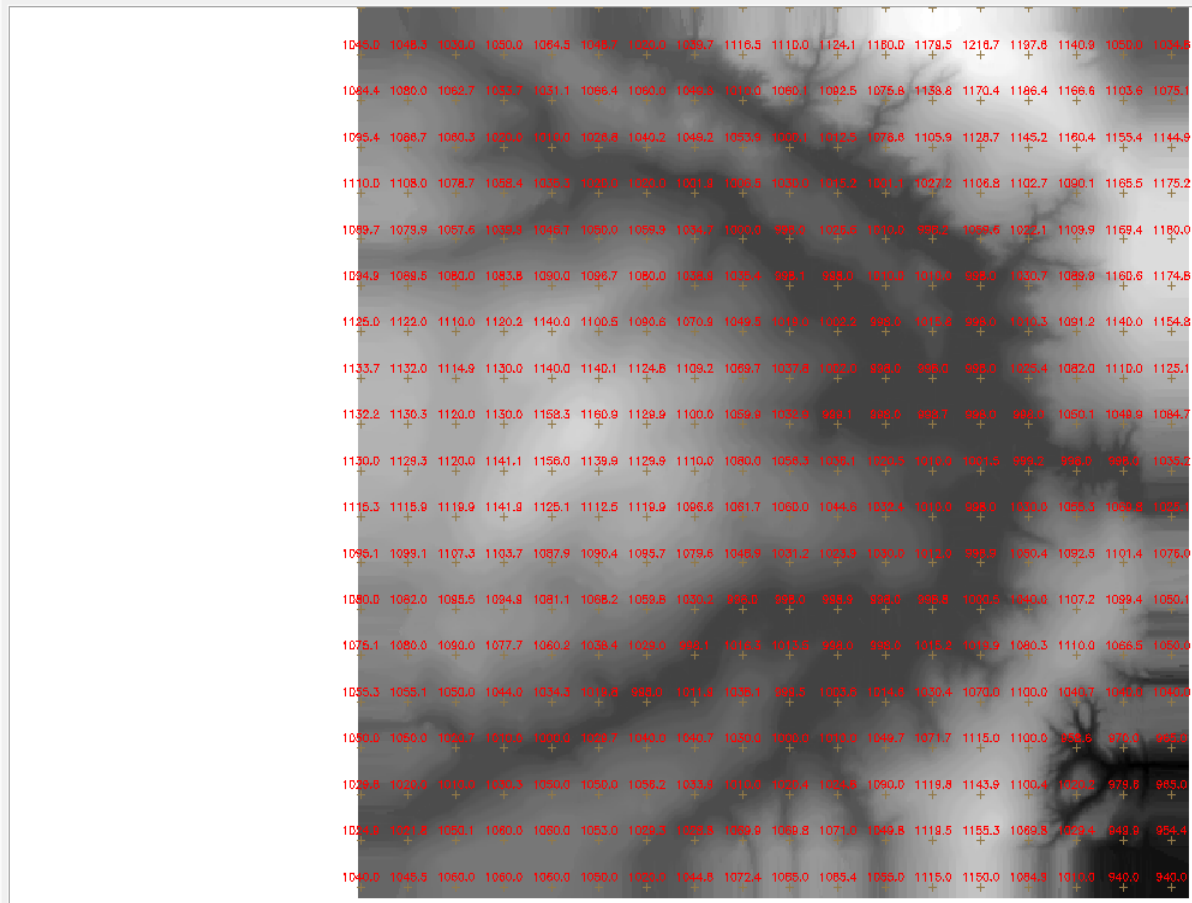
PI Disponíveis | PI Selecionados

Categoria / Plano de Informação

- (V) Altimetria
 - Mapa_Altimetrico
 - MNT-Tin
 - MNT-tin-brk
 - (Glm) MNT-grd
- () Corpos_Agua



- Amostras
- Isolinhas
- Grade
- Texto
- TIN
- Imagem



Painel de Controle

Tela Ativa : Tela 4

PI Disponíveis | PI Selecionados

Categoria / Plano de Informação

- (V) Altimetria
 - Mapa_Altimetrico
 - MNT-Tin
 - MNT-tin-brk
 - MNT-grd
 - (G) MNT-grd-10
- (T) Corpos_Agua



- Amostras
- Grade
- TIN
- Isolinhas
- Texto
- Imagem

+	1048.3	1030.0	1047.0	1060.5	1057.4	1020.9	1020.1	1098.2	1102.1	1078.0	1134.6	1177.0	1209.7	1210.0	1174.0	1091.8	1030.4	
+	1080.0	1068.1	1036.3	1021.0	1060.0	1044.6	1058.8	1016.1	1069.0	1062.0	1098.2	1102.6	1180.0	1179.8	1181.9	1140.2	1077.6	
+	1089.5	1082.2	1020.1	1010.0	1027.6	1028.8	1048.4	1049.5	1039.8	1008.7	1020.5	1101.4	1109.4	1140.0	1151.6	1157.3	1143.4	
+	1109.7	1080.0	1059.9	1042.0	1018.1	1022.2	1008.7	998.0	1030.0	1027.6	998.3	1015.2	1089.9	1110.0	1099.1	1134.9	1177.6	
+	1079.9	1059.3	1040.3	1048.2	1048.5	1060.6	1046.9	1010.7	998.0	1022.6	1020.0	998.6	998.7	1046.4	1078.4	1135.9	1179.0	
+	1090.1	1080.7	1083.8	1080.1	1087.2	1085.9	1046.3	1040.4	1010.2	998.8	999.5	1020.0	998.0	1010.0	1078.4	1120.4	1170.8	
+	1124.8	1110.0	1120.1	1140.0	1108.4	1096.9	1078.8	1059.0	1027.1	1011.2	998.0	1000.1	998.7	899.8	1040.7	1116.5	1150.7	
+	1132.5	1116.7	1130.0	1140.0	1144.6	1131.0	1110.4	1064.2	1045.7	1017.2	998.0	998.0	998.0	1004.7	1066.7	1090.8	1120.7	
+	1130.4	1120.0	1130.0	1153.6	1169.5	1134.7	1107.5	1070.0	1040.3	999.6	998.2	998.0	998.0	998.0	1025.9	1039.2	1071.2	
+	1129.5	1120.0	1140.1	1154.4	1138.2	1130.0	1119.3	1082.3	1064.8	1039.8	1030.0	1010.0	1006.5	998.0	1019.3	998.0	1028.0	
+	1114.0	1118.1	1139.9	1128.3	1110.1	1120.0	1102.9	1070.0	1085.3	1050.6	1038.7	1021.2	998.0	998.0	1060.5	1065.2	1090.0	
+	1094.2	1100.7	1102.4	1086.4	1087.3	1098.3	1078.5	1054.4	1021.5	1024.2	1015.1	1028.7	998.0	1018.4	1084.8	1100.0	1084.5	
+	1080.9	1096.5	1095.0	1083.1	1065.7	1060.1	1038.5	998.0	998.0	998.0	998.0	998.0	998.0	999.7	1032.1	1088.8	1112.1	1042.8
+	1077.2	1080.1	1076.0	1060.0	1031.8	1028.2	1000.8	1011.7	1015.9	998.4	998.0	1000.9	1013.7	1042.9	1104.6	1073.0	1047.4	
+	1068.2	1041.0	1041.3	1031.6	1019.2	998.4	1014.0	1034.4	1011.9	998.0	1008.9	1019.8	1073.8	1100.0	1080.7	1021.8	1040.0	
+	1050.0	1027.8	1010.0	1000.9	1028.5	1041.3	1042.4	1030.3	899.8	1004.7	1040.2	1089.7	1105.2	1120.9	1023.0	951.8	950.9	
+	1020.0	1010.0	1031.4	1048.7	1052.7	1057.4	1040.0	1010.0	1040.2	1058.7	1048.1	1105.8	1139.2	1140.2	1028.0	981.9	980.2	
+	1030.5	1054.4	1060.0	1060.0	1053.9	1030.9	1023.1	1059.8	1089.9	1097.4	1059.6	1098.3	1141.9	1125.1	1040.7	952.4	940.0	
+	1060.0	1080.0	1060.0	1080.0	1053.4	1025.0	1025.2	1065.3	1090.0	1068.1	1065.0	1085.0	1144.9	1124.9	1051.0	955.1	940.0	

Painel de Controle

Tela Ativa : Tela 4

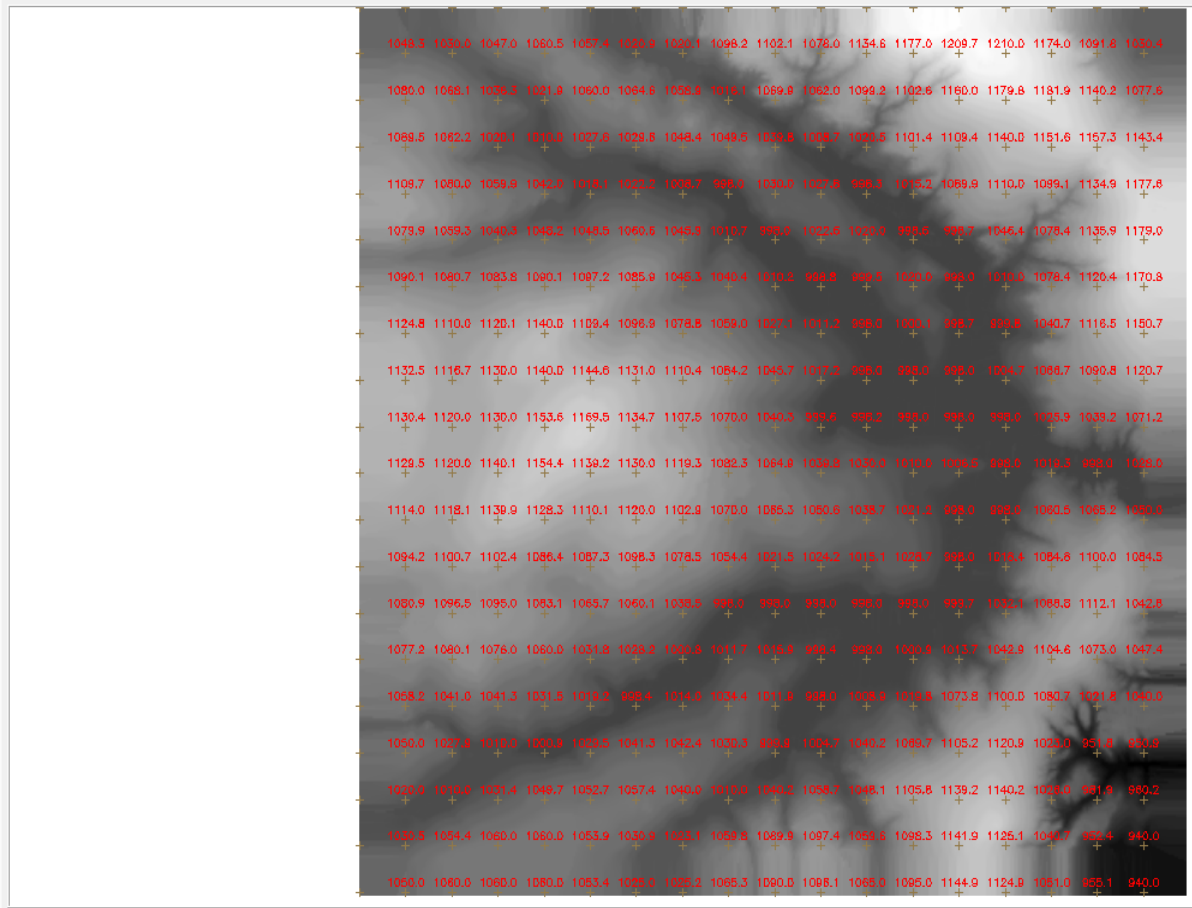
PI Disponíveis | PI Selecionados

Categoria / Plano de Informação

- (V) Altimetria
 - Mapa_Altimetrico
 - MNT-Tin
 - MNT-tin-brk
 - MNT-grd
 - (Glm) MNT-grd-10
- (T) Corpos_Agua



- Amostras
- Grade
- TIN
- Isoglinhas
- Texto
- Imagem



Painel de Controle

Tela Ativa : Tela 4

PI Disponíveis | PI Selecionados

Categoria / Plano de Informação

- (V) Altimetria
 - Mapa_Altimetrico
 - MNT-Tin
 - MNT-tin-brk
 - MNT-grd
 - MNT-grd-10
 - MNT-grd-tin
- (T) Corpos_Agua



- Amostras
- Grade
- TIN
- Isolinhas
- Texto
- Imagem

+	1048.2	1029.2	1046.7	1061.7	1056.6	1019.4	1019.8	1099.9	1102.7	1084.0	1136.0	1176.5	1210.0	1210.0	1174.6	1089.6	+
+	1081.8	1085.3	1037.3	1024.8	1063.6	1064.1	1060.0	1013.5	1072.7	1063.8	1101.2	1101.3	1160.8	1179.5	1181.7	1139.5	+
+	1088.4	1064.3	1020.3	1009.8	1028.2	1031.4	1048.3	1050.0	1038.1	1013.9	1021.9	1103.6	1109.8	1140.8	1153.9	1158.3	+
+	1107.6	1079.3	1066.2	1042.6	1015.9	1022.1	1006.5	996.0	1030.0	1026.3	996.0	1018.2	1090.6	1111.2	1103.3	1136.0	+
+	1082.2	1081.5	1037.7	1045.4	1046.0	1059.8	1045.1	1010.9	998.0	1025.0	1020.0	998.0	999.9	1050.6	1075.8	1134.9	1179.5
+	1088.8	1080.5	1082.0	1088.7	1093.6	1086.4	1044.7	1040.2	1009.0	998.0	1000.8	1020.0	998.0	1008.2	1073.7	1119.9	1174.6
+	1123.4	1107.2	1118.0	1138.8	1108.0	1093.1	1075.3	1055.9	1024.3	1010.5	998.0	1002.3	998.0	998.0	1058.6	1117.3	1153.6
+	1132.6	1117.2	1130.7	1140.0	1142.6	1131.0	1110.4	1085.8	1048.2	1017.8	998.0	998.0	998.0	1008.4	1066.1	1084.3	1124.7
+	1131.1	1120.0	1127.6	1153.4	1167.3	1135.3	1108.2	1071.0	1041.7	998.3	996.0	998.0	998.0	998.0	1028.6	1044.4	1080.0
+	1129.4	1120.0	1139.1	1156.4	1140.9	1131.8	1118.1	1082.3	1061.8	1035.8	1029.1	1010.0	1008.9	998.0	1011.2	998.0	1031.4
+	1115.4	1115.9	1141.9	1130.1	1111.2	1120.0	1105.3	1070.0	1063.9	1052.1	1037.4	1020.1	998.0	998.0	1060.0	1057.8	1030.2
+	1096.0	1104.4	1106.8	1088.7	1089.5	1099.9	1079.9	1059.2	1027.6	1026.3	1018.5	1028.6	998.0	1016.5	1061.4	1098.0	1082.7
+	1081.1	1095.2	1095.1	1081.8	1068.7	1064.6	1041.5	998.0	998.0	998.0	998.0	998.0	998.0	1025.5	1081.0	1110.0	1060.4
+	1077.8	1080.0	1080.3	1086.0	1038.1	1031.8	1010.0	1012.2	1011.6	1000.5	998.0	998.1	1004.7	1050.8	1105.1	1083.2	1055.4
+	1059.2	1049.5	1047.6	1035.9	1022.3	998.0	1010.1	1033.3	1015.3	998.4	1006.8	1010.3	1072.0	1065.1	1082.4	1036.3	1038.5
+	1050.0	1030.6	1003.2	1000.0	1023.4	1039.1	1041.0	1035.3	1007.5	998.1	1036.5	1058.4	1100.5	1119.5	1048.1	983.9	982.5
+	1027.5	1008.6	1028.8	1047.8	1052.0	1055.7	1043.6	1008.0	1029.6	1047.8	1041.3	1109.5	1133.2	1137.2	1023.3	953.5	951.1
+	+	1049.0	1069.2	1060.0	1055.9	1038.2	1018.6	1048.0	1080.2	1090.8	1047.6	1097.5	1144.7	1128.7	999.2	973.4	942.6
+	+	+	+	+	+	+	+	+	+	+	+	+	+	+	+	+	+

Painel de Controle

Tela Ativa : Tela 4

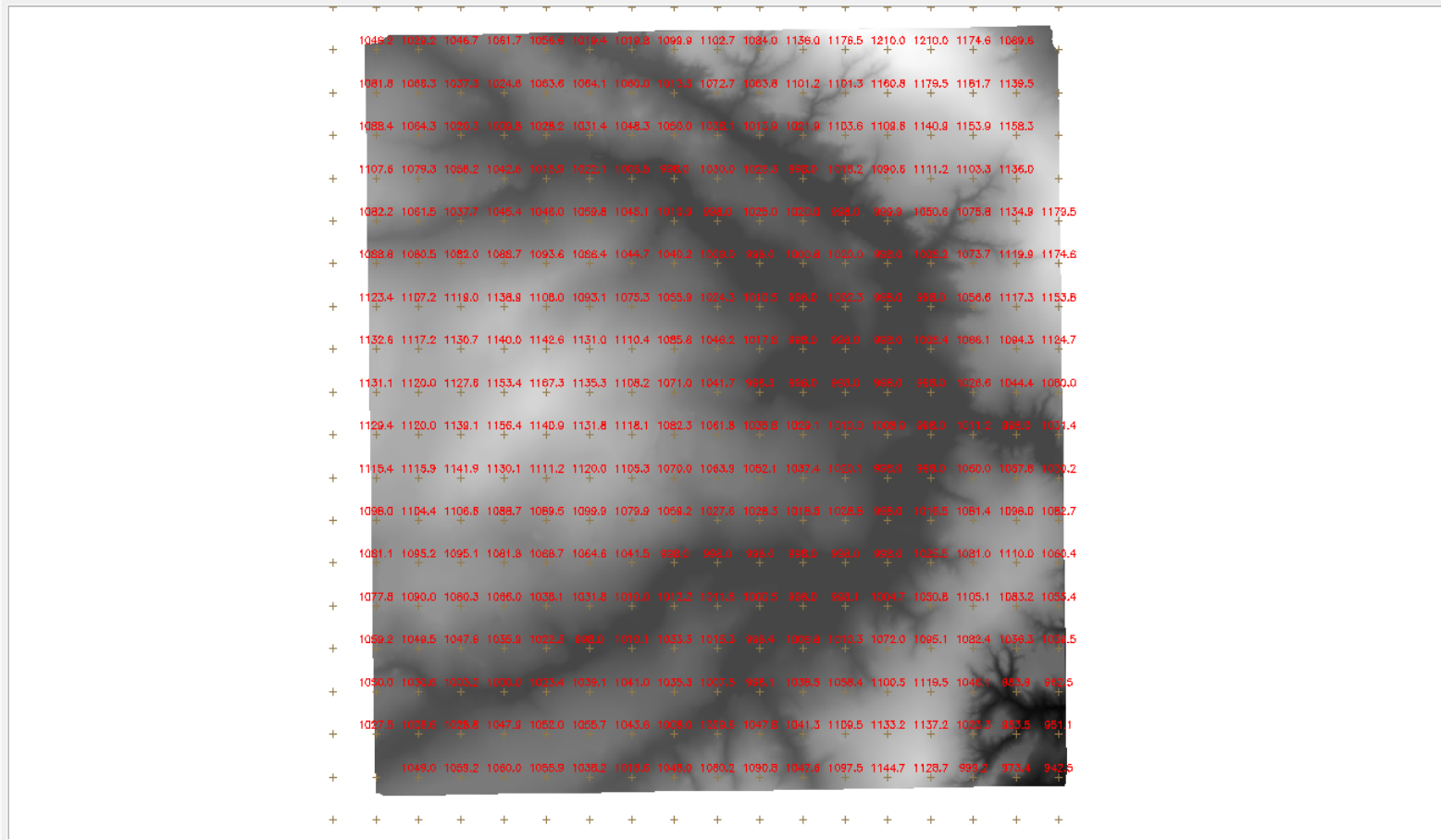
PI Disponíveis | PI Selecionados

Categoria / Plano de Informação

- (V) Altimetria
 - Mapa_Altimetrico
 - MNT-Tin
 - MNT-tin-brk
 - MNT-grd
 - MNT-grd-10
 - (Glm) MNT-grd-tin
- (T) Corpos_Agua



- Amostras
- Isolinhas
- Grade
- Texto
- TIN
- Imagem



Painel de Controle

Tela Ativa : Principal

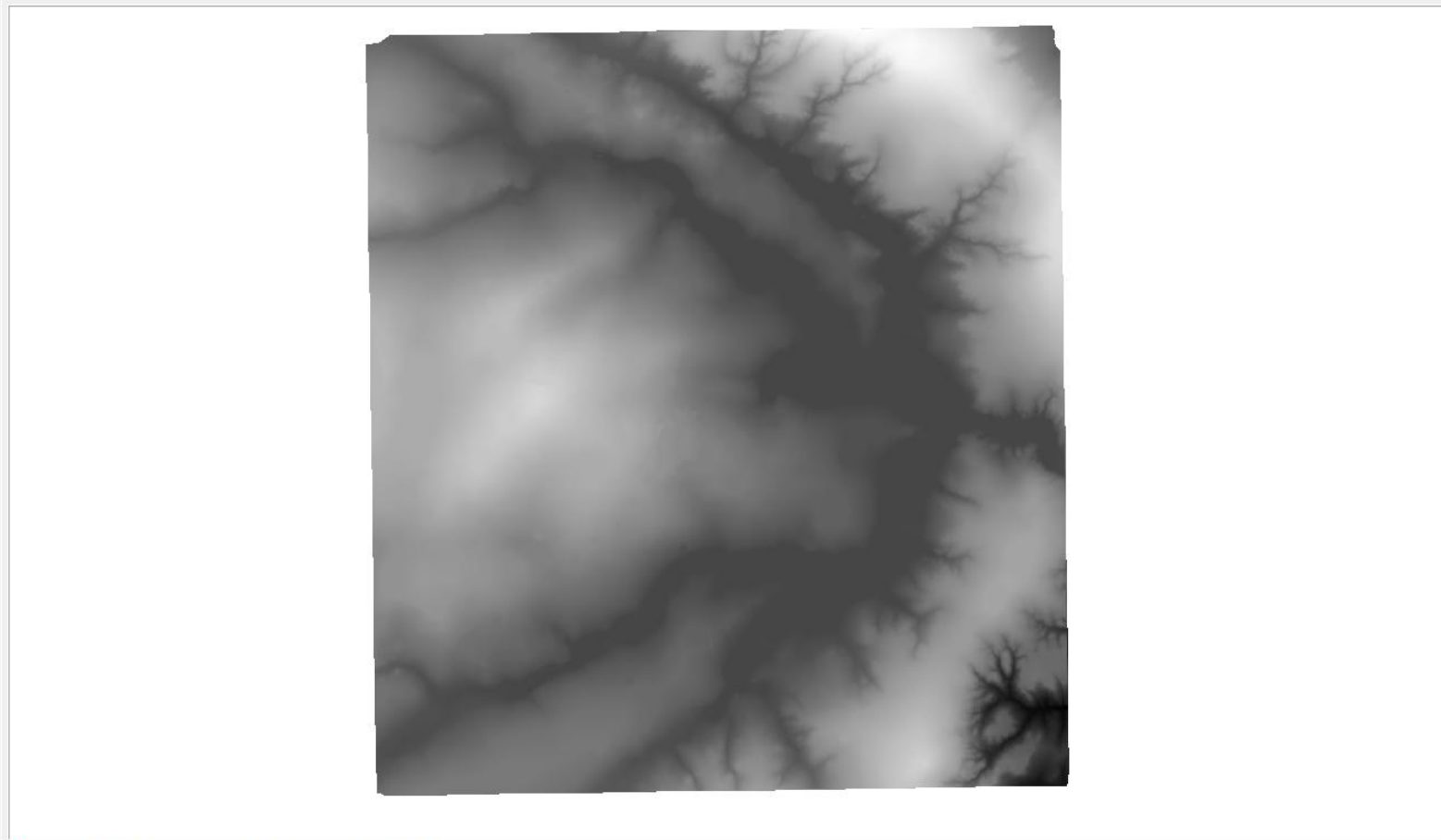
PI Disponíveis | PI Selecionados

Categoria / Plano de Informação

- M () Altimetria
 - () MNT-grd
 - () MNT-tin-brk
 - () Mapa_Altimetrico
 - () MNT-grd-10
 - () MNT-grd-tin
 - () MNT-Tin
- T () Corpos_Agua
- V (V) Imagens_MNT
 - (M) Ima-mnt-NC



M Texto
 R G B



Painel de Controle

Tela Ativa : Principal

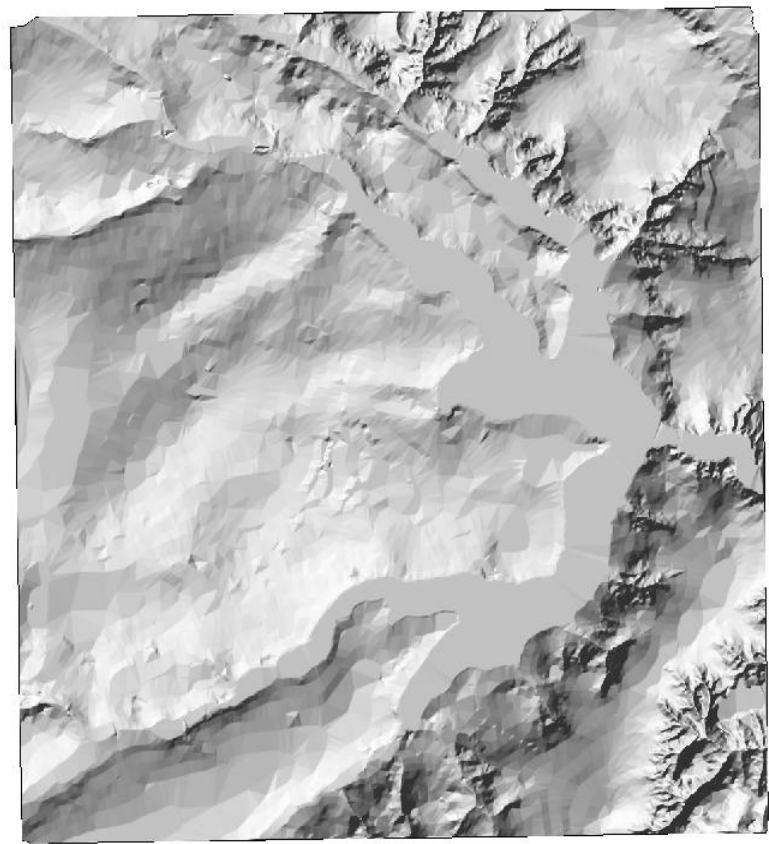
PI Disponíveis | PI Selecionados

Categoria / Plano de Informação

- M () Altimetria
 - () MNT-grd
 - () MNT-tin-brk
 - () Mapa_Altimetrico
 - () MNT-grd-10
 - () MNT-grd-tin
 - () MNT-Tin
- T () Corpos_Agua
- V (V) Imagens_MNT
 - () Ima-mnt-NC
 - (M) Ima-mnt-SOM



- M
- B
- Texto
- G
- B



Painel de Controle

Tela Ativa : Principal

PI Disponíveis | PI Selecionados

Categoria / Plano de Informação

- () Altimetria
 - () MNT-grd
 - () MNT-tin-brk
 - () Mapa_Altimetrico
 - () MNT-grd-10
 - () MNT-grd-tin
 - () MNT-Tin
- () Corpos_Agua
- (V) Grades_Numéricas
 - (G) GRD-decl
- () Imagens_MNT



- Amostras
- Isolinhas
- Grade
- Texto
- TIN
- Imagem

+	1.986	1.559	3.568	2.468	3.767	2.0e-1	1.515	8.506	4.185	28.7	7.062	7.753	0.0	0.0	2.279	10.3	+
+	9.3e-1	1.991	2.642	3.703	1.130	1.063	0.0	7.527	8.375	9.553	4.028	12.7	2.712	3.002	8.2e-1	3.689	+
+	1.587	1.806	2.388	7.1e-1	4.379	5.879	2.486	5.7e-1	7.846	12.7	3.401	1.852	3.498	1.138	2.357	1.907	+
+	2.115	1.676	1.798	3.339	2.564	1.907	1.873	0.0	0.0	2.301	0.0	7.496	1.667	1.699	7.586	4.078	+
+	4.098	3.803	4.430	1.915	1.892	2.085	1.433	2.624	0.0	1.894	0.0	0.0	5.453	7.048	7.084	2.319	+
+	2.650	1.846	2.610	2.318	2.583	2.359	2.315	9.8e-1	2.883	0.0	3.265	0.0	0.0	2.652	4.082	3.484	+
+	1.340	1.073	1.589	1.900	1.875	2.627	1.821	1.984	2.532	4.1e-1	0.0	2.371	0.0	0.0	11.4	2.668	1.471
+	2.9e-1	8.2e-1	9.5e-1	0.0	1.768	1.513	4.5e-1	2.664	1.634	2.769	0.0	0.0	0.0	3.238	5.881	1.730	2.381
+	2.9e-1	0.0	8.3e-1	1.265	1.454	1.300	1.513	2.727	1.522	2.674	0.0	0.0	0.0	0.0	10.2	8.361	2.689
+	1.409	0.0	1.473	1.208	2.195	9.2e-1	1.276	1.339	2.142	1.835	1.683	0.0	2.228	0.0	6.800	0.0	3.861
+	6.6e-1	1.266	1.249	2.212	1.270	0.0	1.578	1.4e-1	5.5e-1	1.216	8.7e-1	1.882	0.0	0.0	2.633	4.448	15.9
+	1.646	1.632	1.608	1.768	1.708	1.871	1.657	2.618	2.360	1.884	1.497	1.746	2.2e-1	3.338	2.595	1.517	3.235
+	2.293	6.1e-1	2.4e-1	5.8e-1	3.6e-1	2.575	2.720	6.1e-2	0.0	0.0	0.0	0.0	0.0	4.757	3.675	0.0	8.763
+	3.057	2.890	1.855	2.858	2.208	2.237	3.397	1.257	1.818	3.127	0.0	3.243	3.548	5.895	1.409	7.079	3.173
+	3.443	2.673	1.711	1.240	1.658	0.0	3.490	1.282	3.034	3.3e-1	1.031	3.380	2.226	2.498	4.137	15.1	3.332
+	0.0	4.496	1.521	0.0	2.343	1.895	9.1e-1	1.027	4.844	3.4e-1	3.350	4.007	1.845	9.6e-1	11.9	18.9	7.478
+	+	4.8e-1	1.788	2.108	5.6e-1	5.3e-1	1.871	7.5e-1	2.847	4.798	7.712	7.5e-1	2.443	3.237	12.0	14.9	10.0
+	+	2.326	1.323	0.0	6.9e-1	3.080	1.250	4.828	2.219	2.372	3.936	2.627	1.661	4.062	8.822	9.826	9.247
+	+	+	+	+	+	+	+	+	+	+	+	+	+	+	+	+	+

Painel de Controle

Tela Ativa : Principal

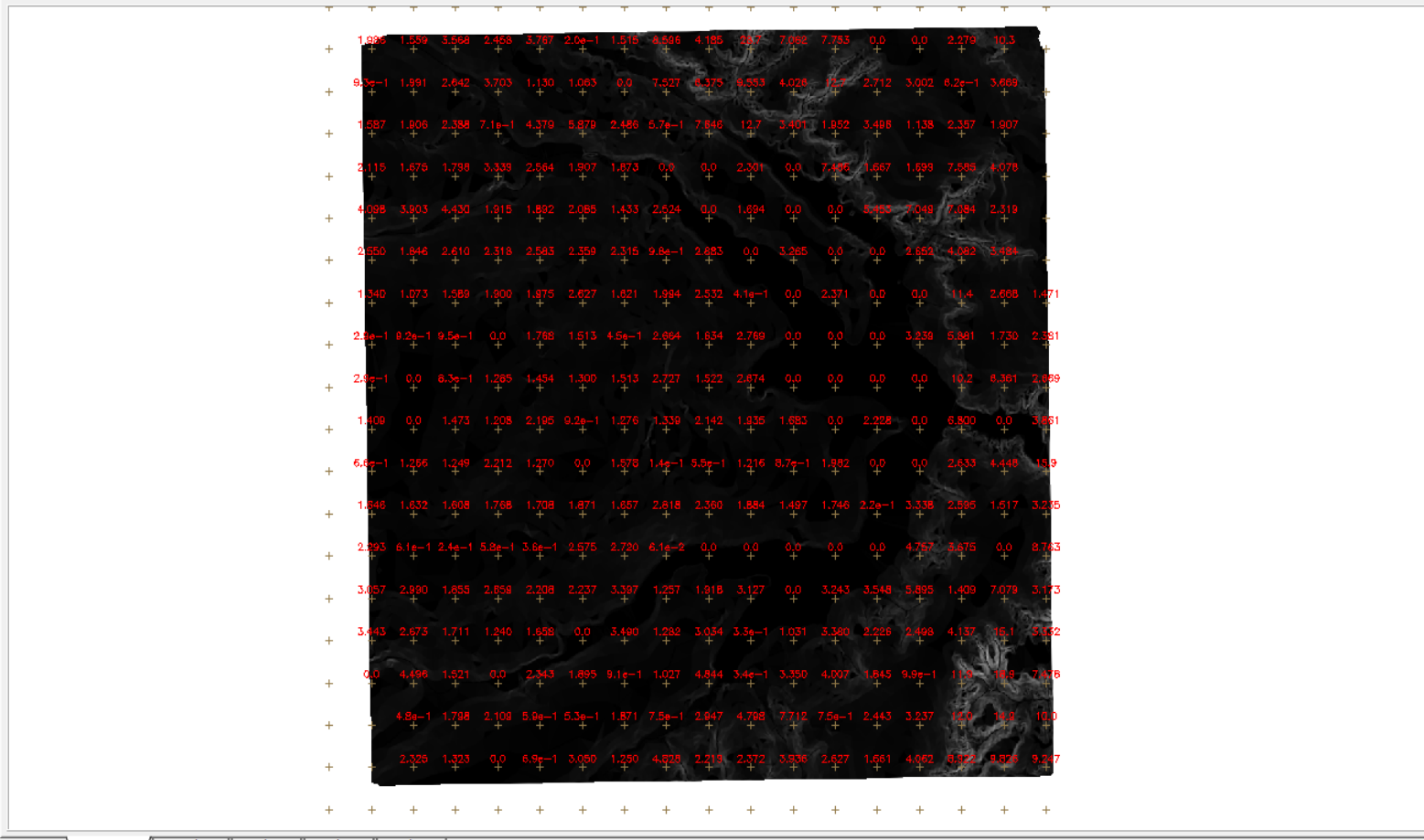
PI Disponíveis | PI Selecionados

Categoria / Plano de Informação

- M () Altimetria
 - () MNT-grd
 - () MNT-tin-brk
 - () Mapa_Altimetrico
 - () MNT-grd-10
 - () MNT-grd-tin
 - () MNT-Tin
- T () Corpos_Agua
- M (V) Grades_Numéricas
 - (Glm) GRD-decl
- I () Imagens_MNT



- Amostras
- Isolinhas
- Grade
- Texto
- TIN
- Imagem



Painel de Controle

Tela Ativa : Principal

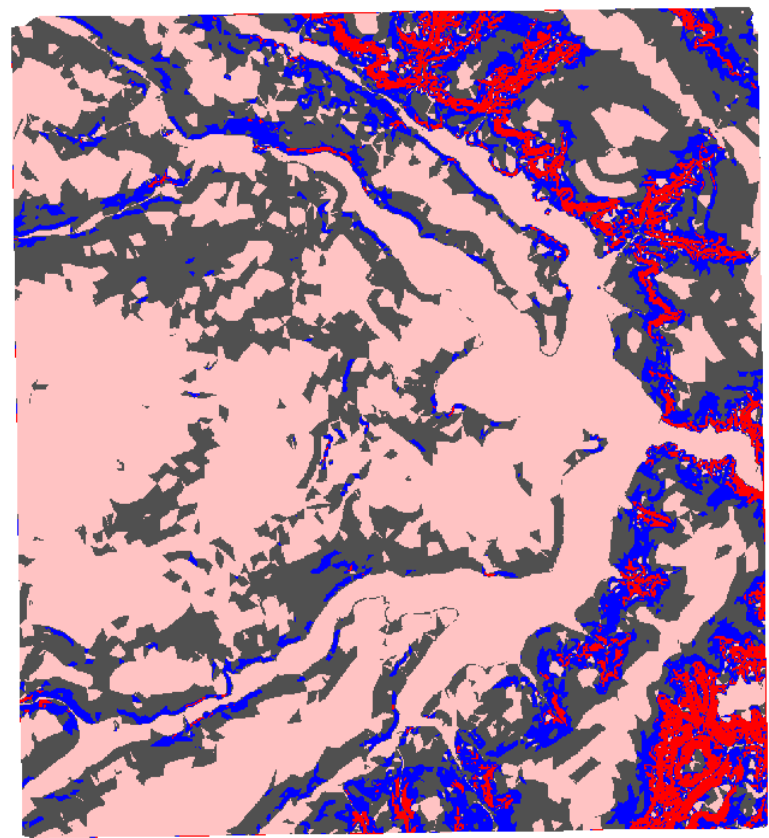
PI Disponíveis | PI Seleccionados

Categoria / Plano de Informação

- (M) Altimetria
- (T) Corpos_Agua
- (V) Declividade
 - (M) Mapa_Declividade-graus
- (M) Grades_Numéricas
 - () GRD-decl
- (I) Imagens_MNT



- Pontos
- Linhas
- Matriz
- Classes
- Texto



Painel de Controle

Tela Ativa : Principal

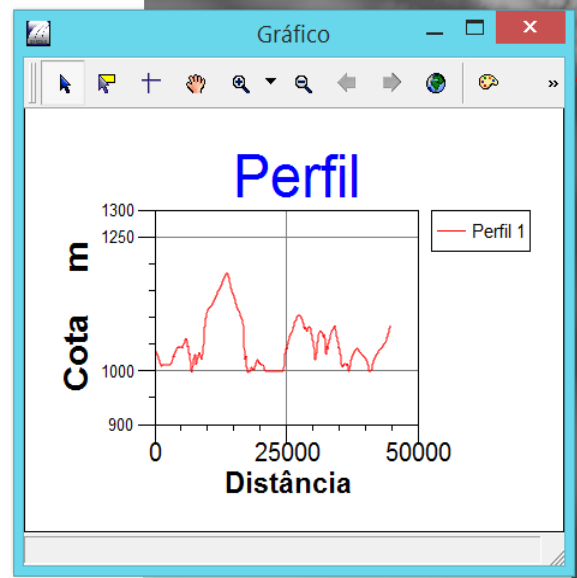
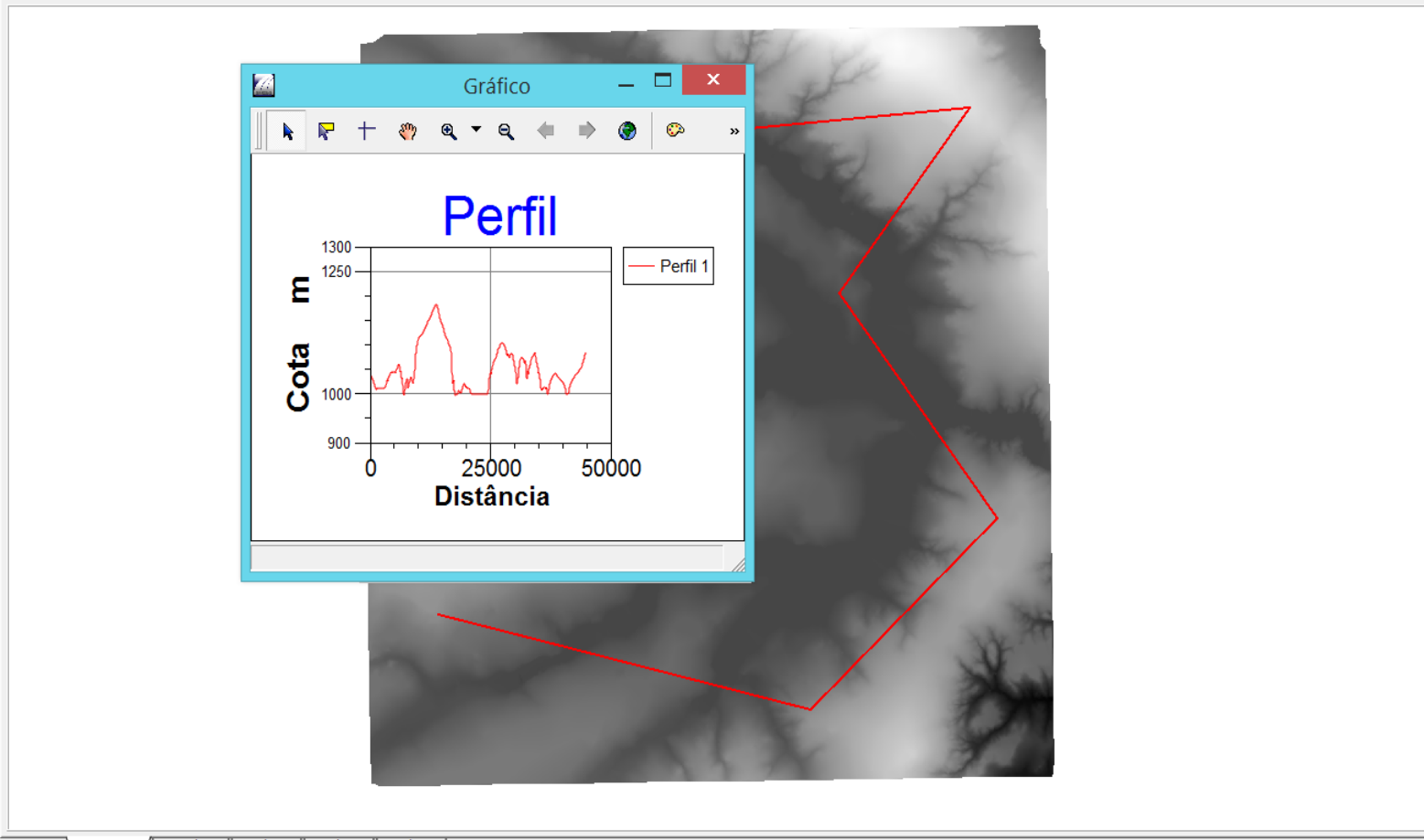
PI Disponíveis | PI Selecionados

Categoria / Plano de Informação

- (M) Altimetria
 - () MNT-grd
 - () MNT-tin-brk
 - () Mapa_Altimetrico
 - () MNT-grd-10
 - () MNT-grd-tin
 - () MNT-Tin
- (T) () Corpos_Agua
- (T) () Declividade
 - () Mapa_Declividade-graus
- (M) () Grades_Numéricas
 - () GRD-decl
- (V) () Imagens_MNT
 - (M) () Ima-mnt-NC
 - () Ima-mnt-SOM



- Amostras
- Grade
- TIN
- Isolinhas
- Texto
- Imagem





Dummy: 912.946411

Exagero Vertical:



MNT-grd-tin

