



MINISTÉRIO DA CIÊNCIA E TECNOLOGIA  
**INSTITUTO NACIONAL DE PESQUISAS ESPACIAIS**

## **Introdução ao Geoprocessamento (SER-300)**

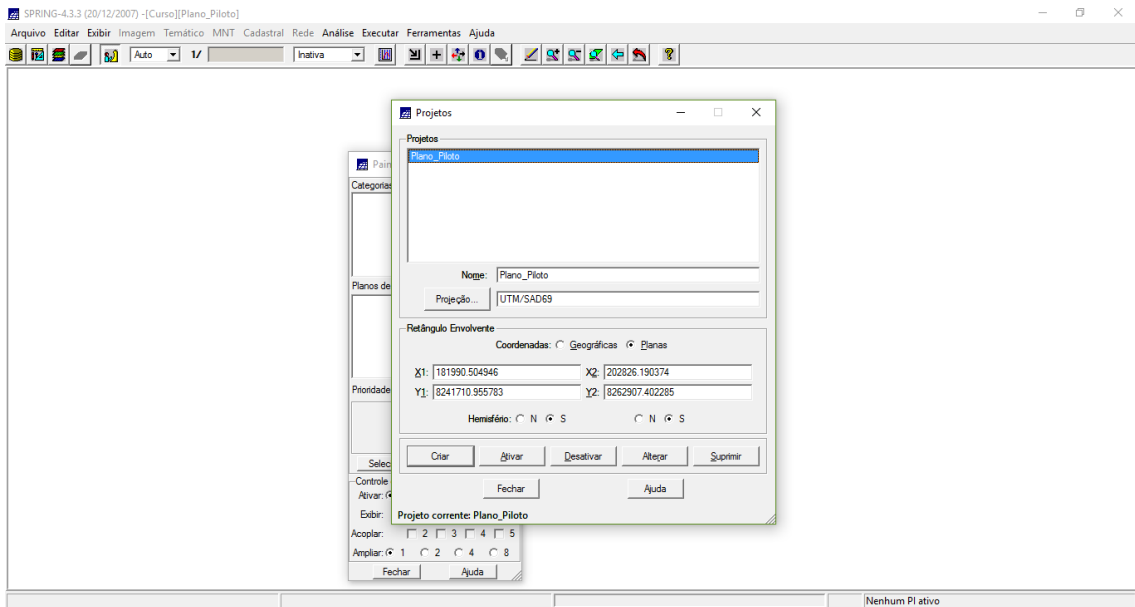
### **Laboratório 2 – Cartografia e integração de dados**

Rogério Flores Júnior

INPE  
São José dos Campos  
2017

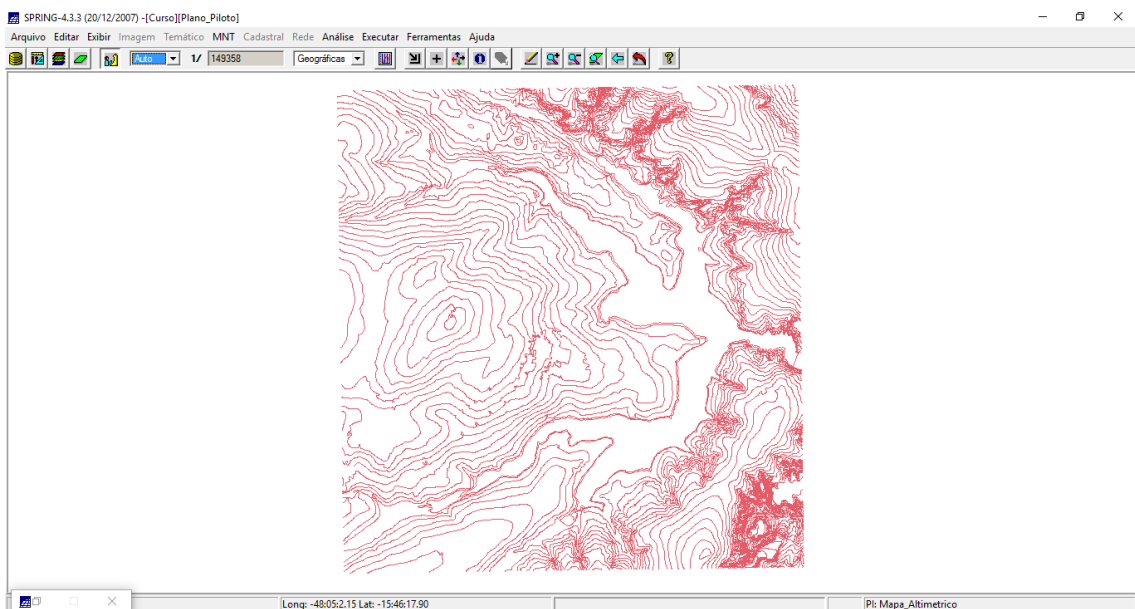
1. Desenvolvimento
2. Exercício 1

### 2.1. Passo 1 - Definindo o Plano Piloto.

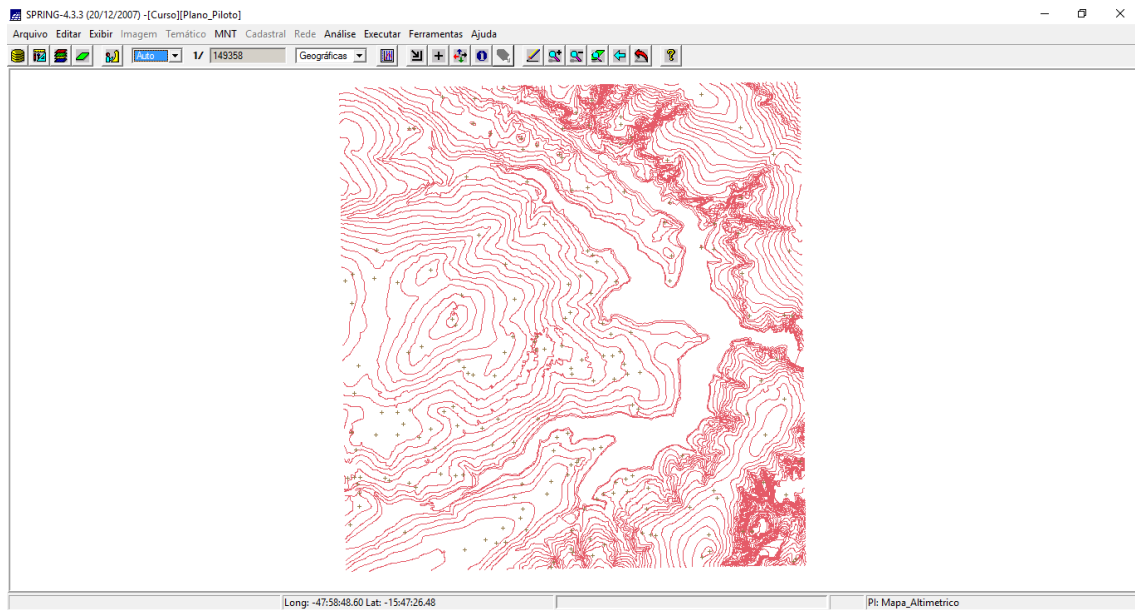


### Exercício 2

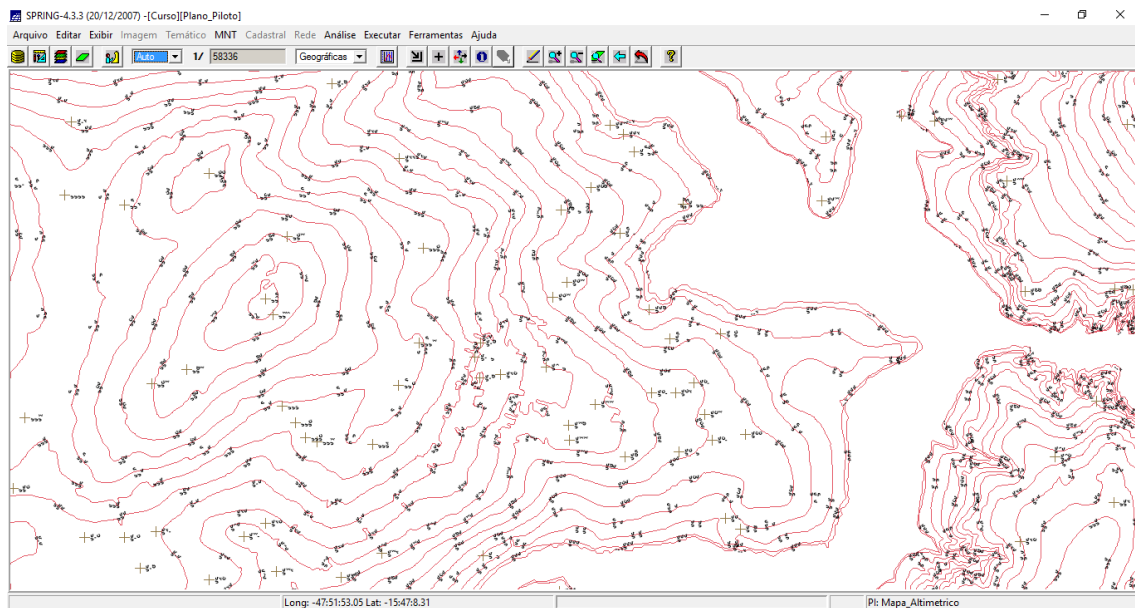
### 2.2. Passo 1 - Importação amostras de MNT.



## 2.3. Passo 2 - Importação amostras de MNT.

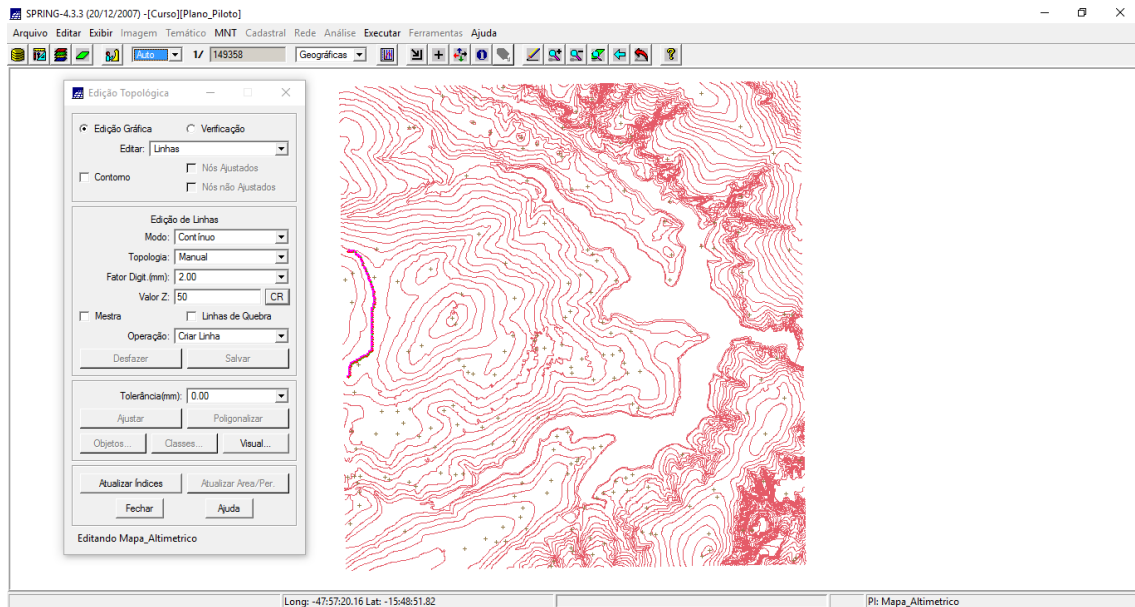


## 2.4. Passo 3 - Gerar toponímia para amostras.

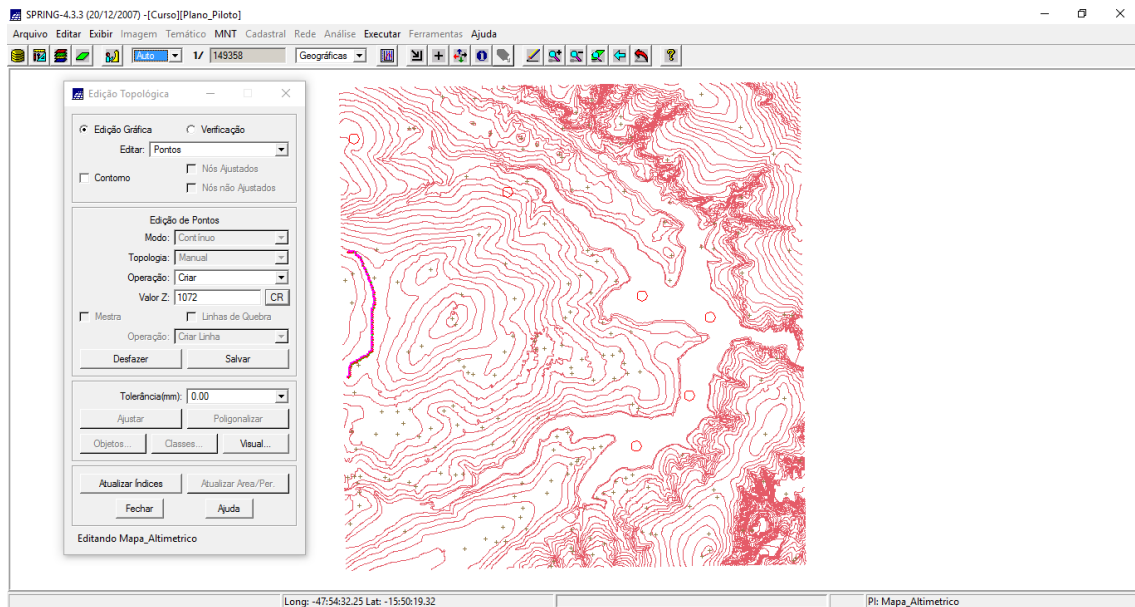


## Exercicio 3

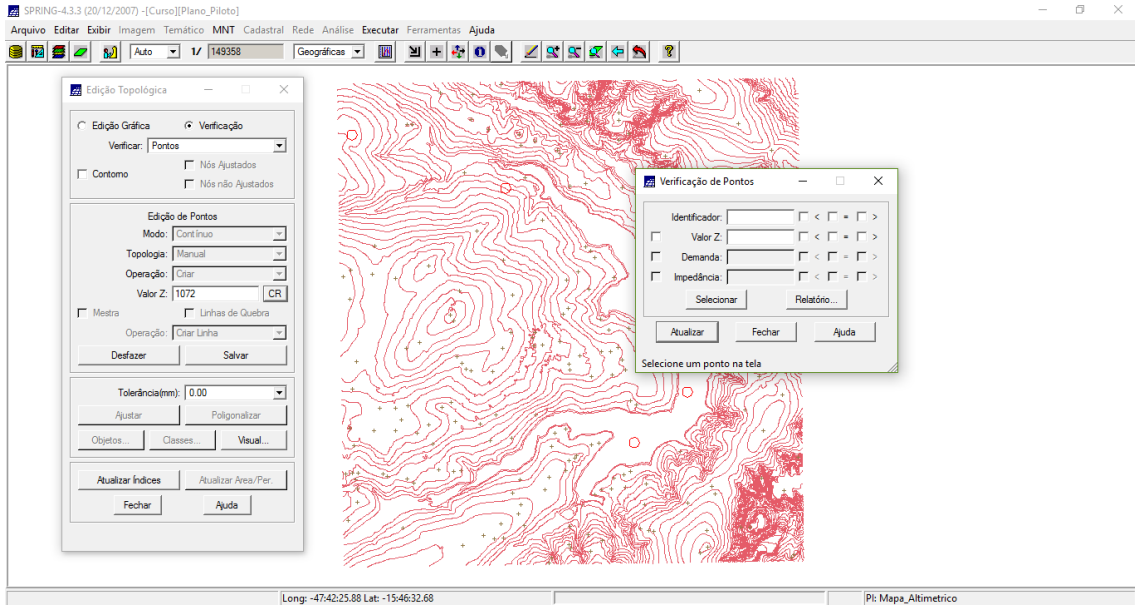
### 2.5.Passo 1 - Criar um novo PI numérico e fazer cópia do mapa altimétrico.



### 2.6.Passo 2 - Criar um novo PI numérico e fazer cópia do mapa altimétrico.

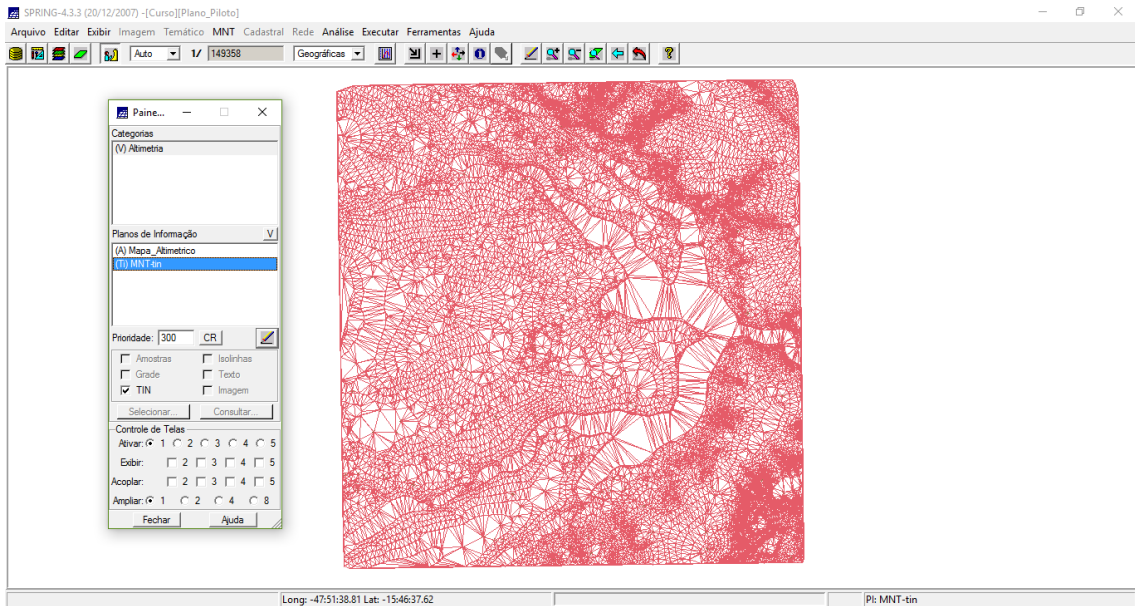


## 2.7. Passo 3 - Suprimir o PI MNT



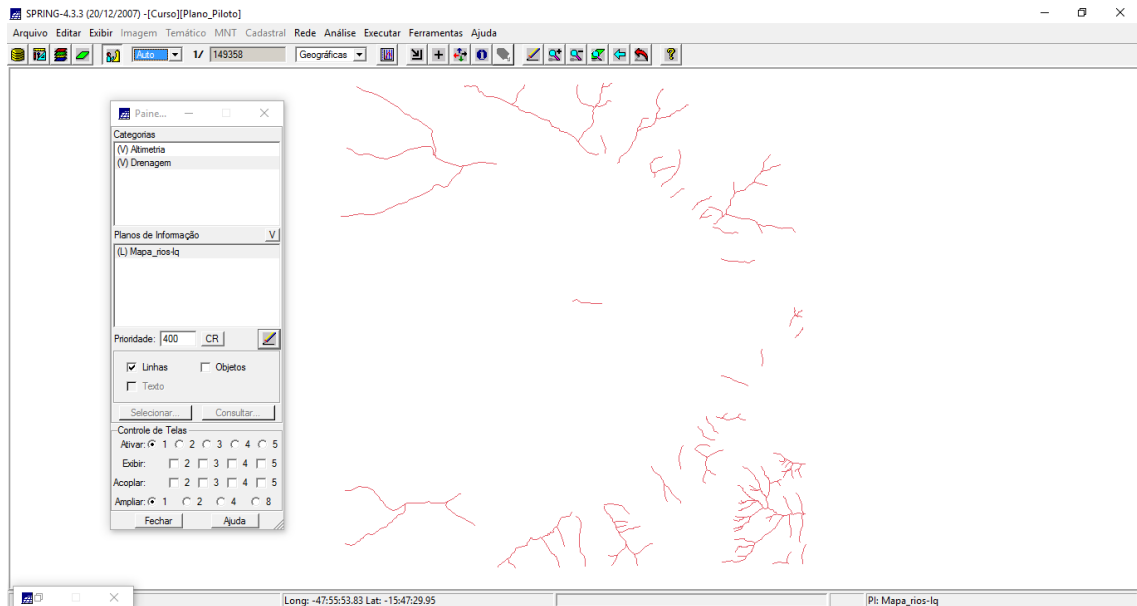
### Exercício 4

## 2.8. Passo 1 - Gerar grade triangular com e sem linha de quebra.

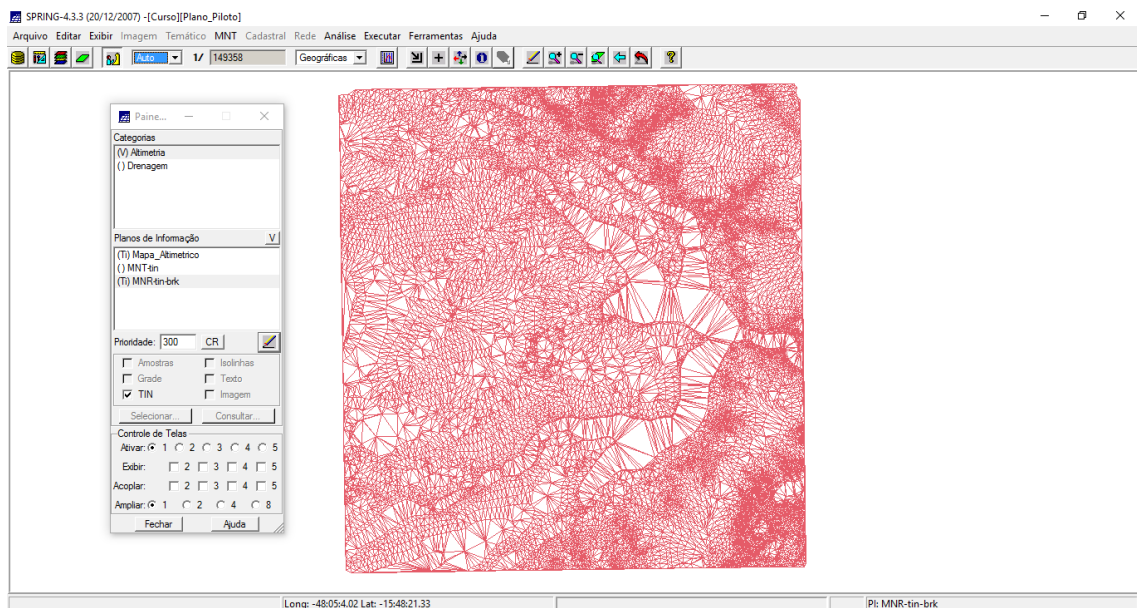


## Com linha de quebra

### 2.9. Passo 1 - Importar a drenagem.

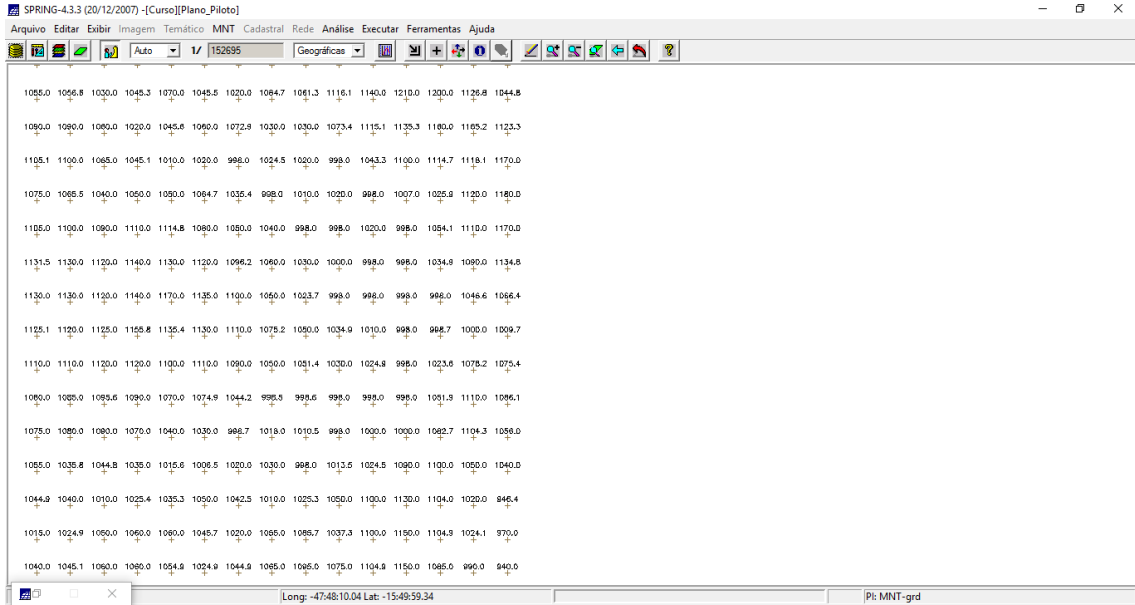


### 2.10. Passo 2 - Importar a drenagem.

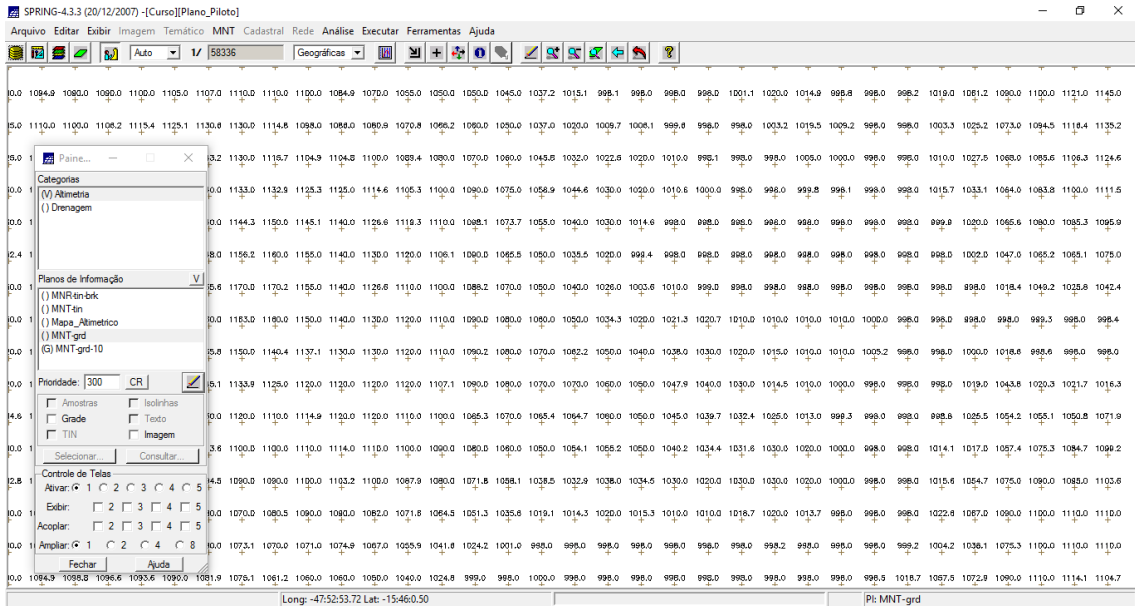


## Exercício 5 - Gerar grades retangulares de amostras e de outras grades.

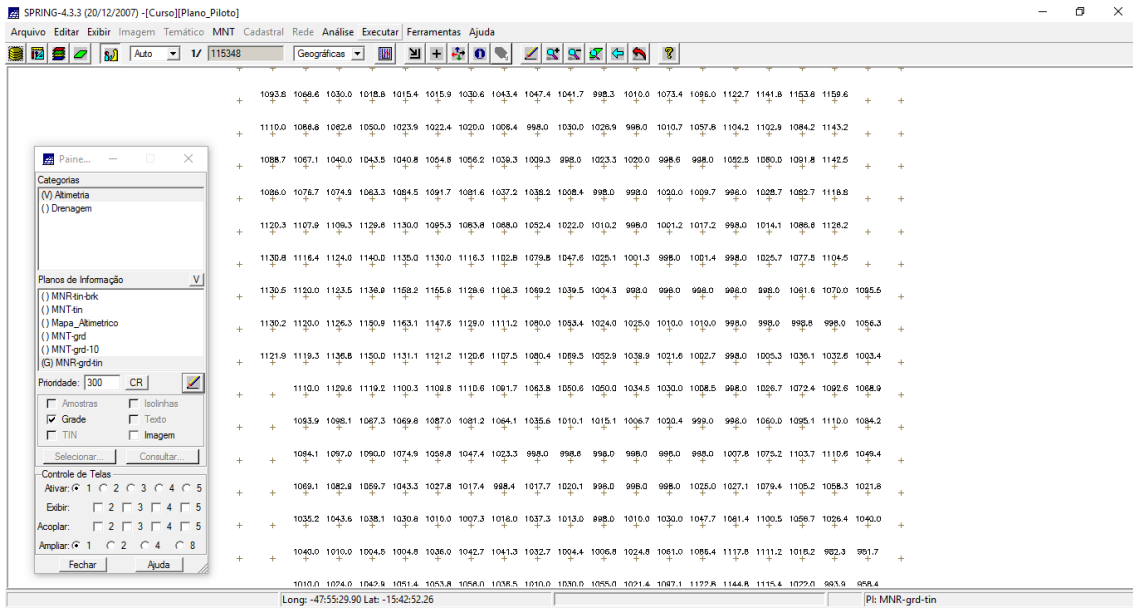
### 2.11. Passo 1 – Grade Retangular.



### 2.12. Passo 2 – Refinar grade retangular a partir de outra grade retangular.

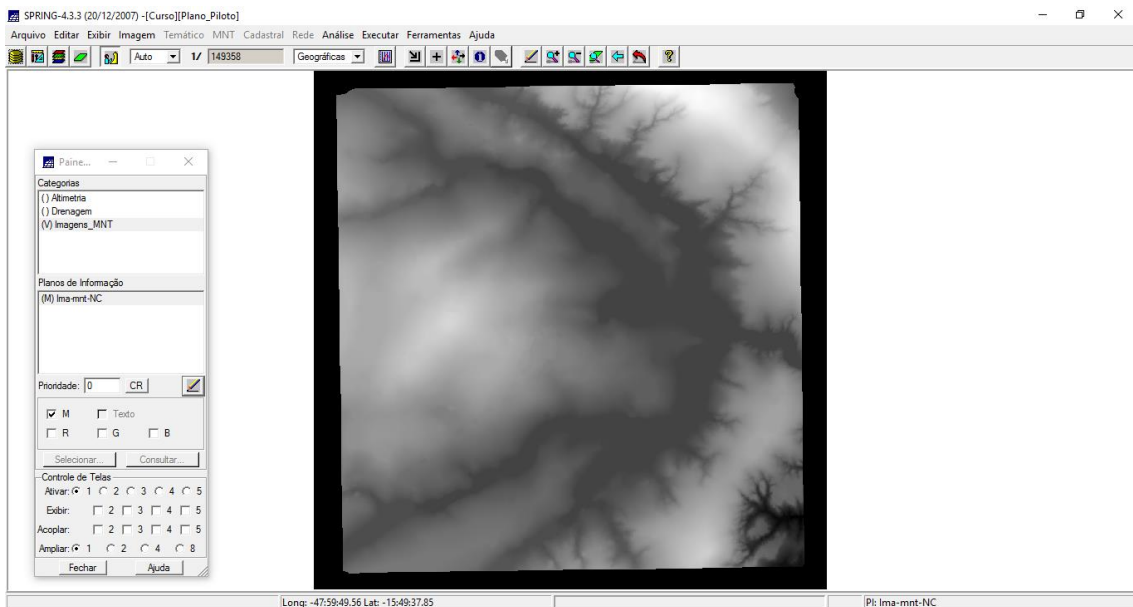


## 2.13. Passo 3 – Gerando grade retangular a partir de TIN.



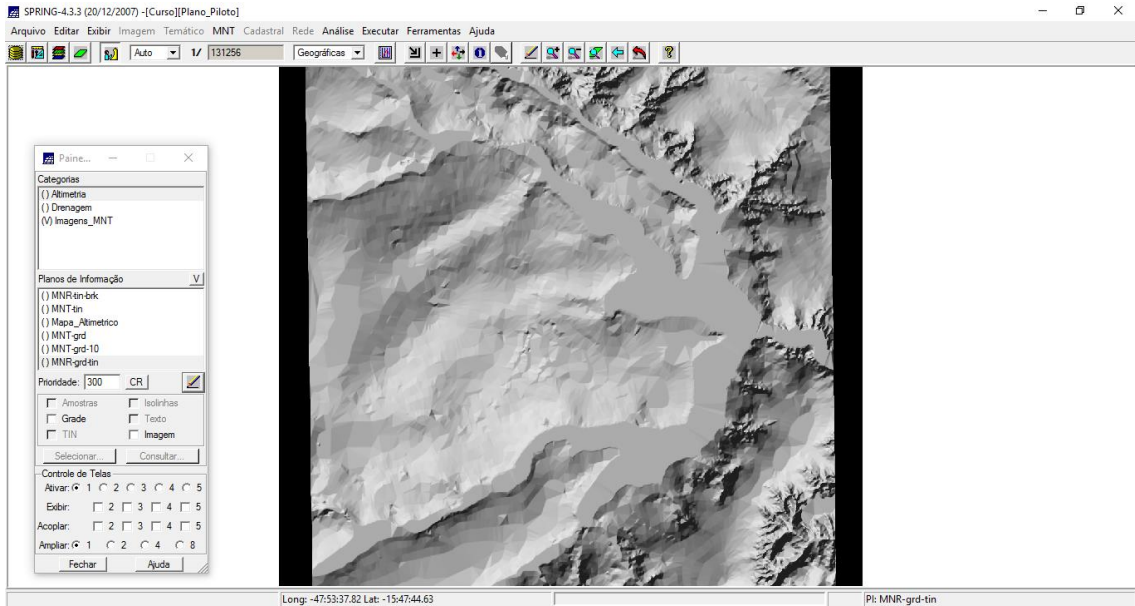
## Exercício 6 - Geração de Imagem para Modelo Numérico.

## 2.14. Passo 1 – Gerando imagem em nível de cinza.



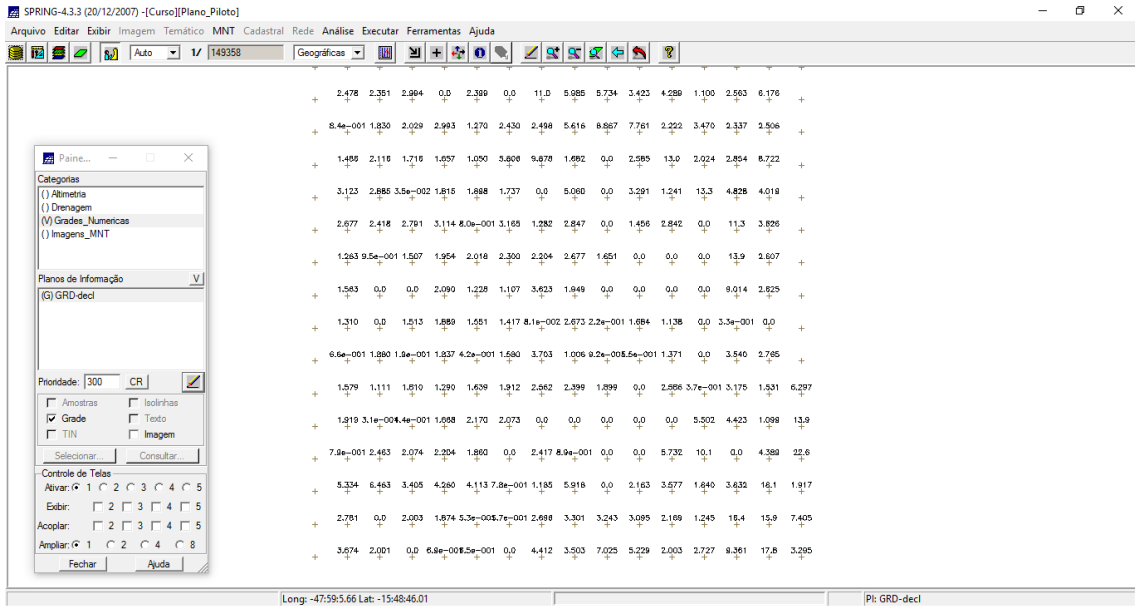


## 2.15. Passo 2 - Gerando imagem sombreada.



## Exercício 7

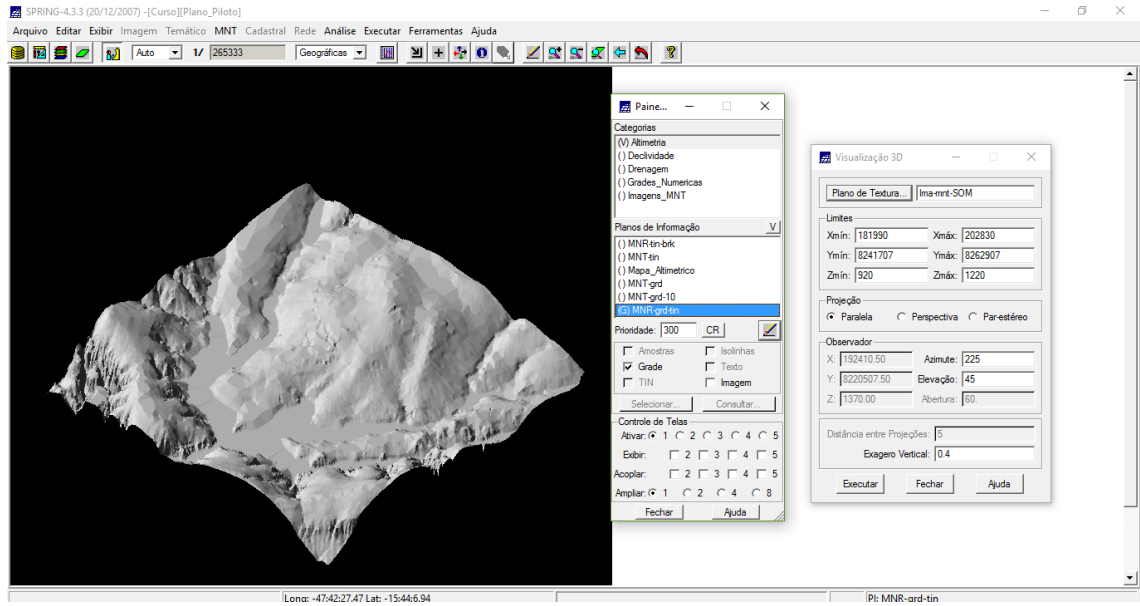
## 2.16. Passo 1 - Grade Declividade.



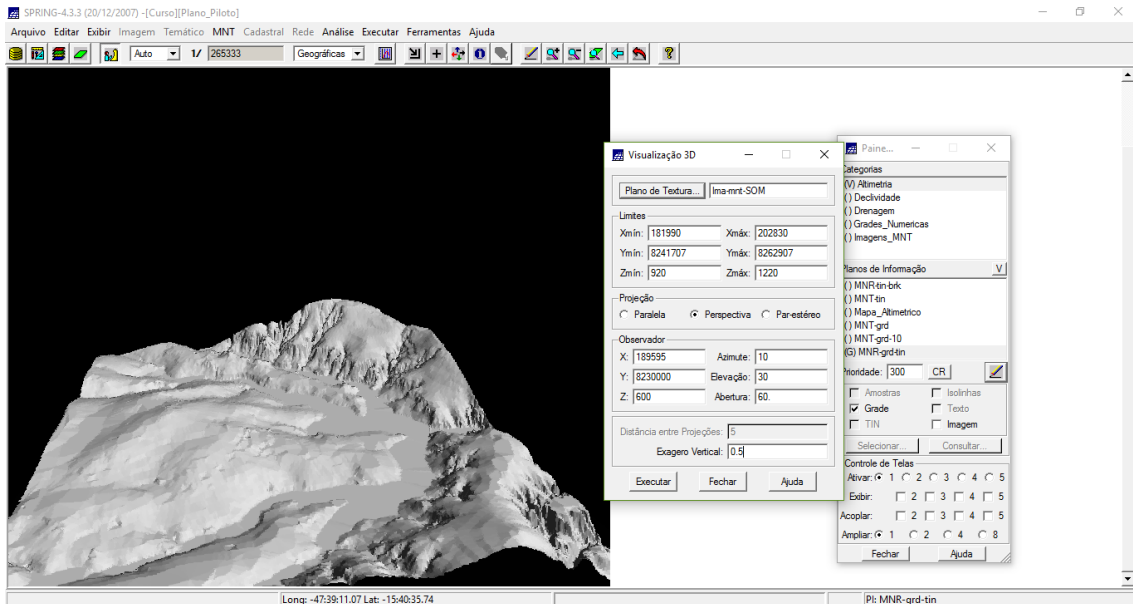


## Exercício 10

### 2.19. Passo 1 - Projeção paralela.



### 2.20. Passo 1 - Projeção Perspectiva.



## 2.21. Passo 1 - Projeção Paralela-estéreo.

