



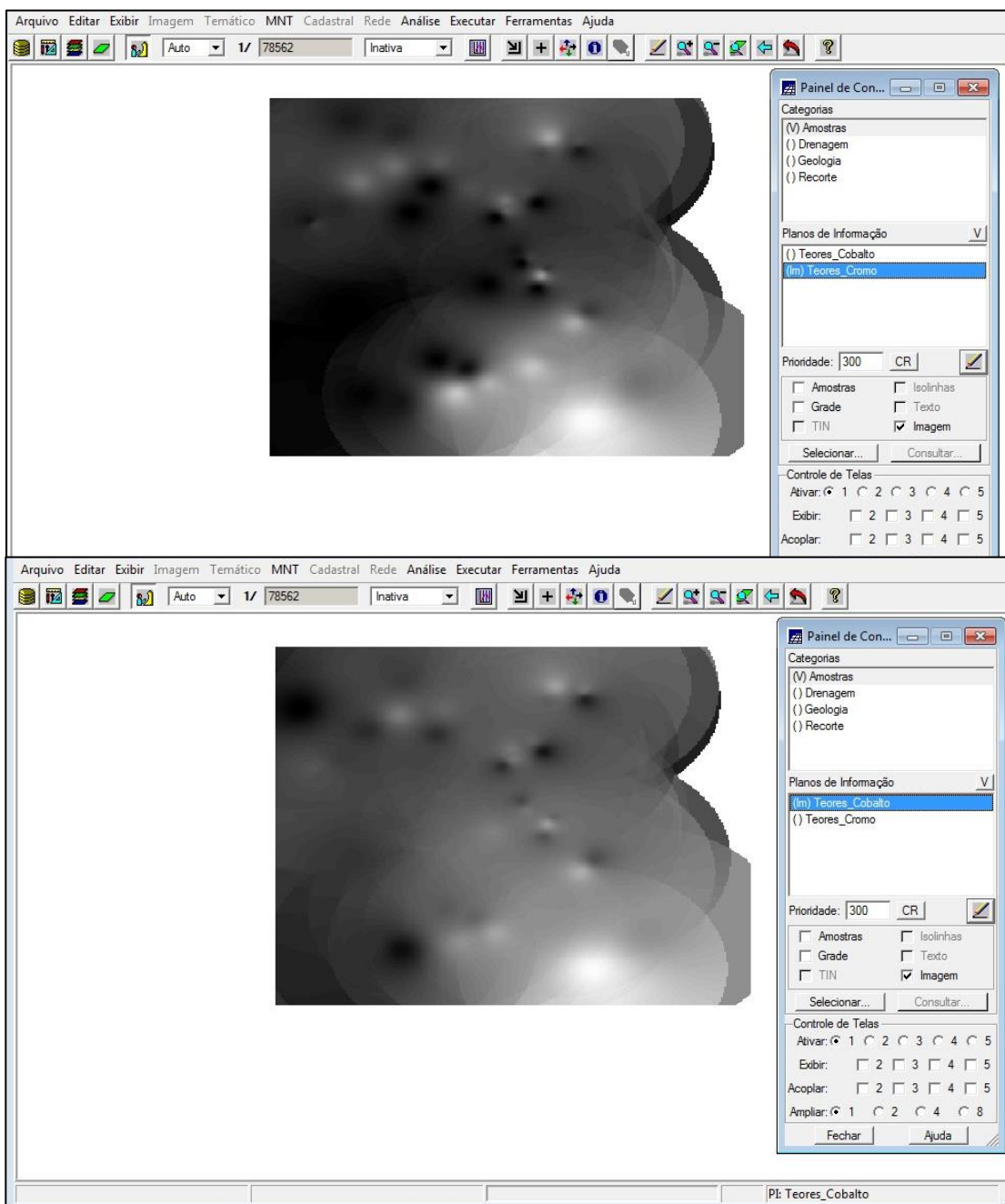
SER300 – Introdução ao Geoprocessamento

Laboratório 4a

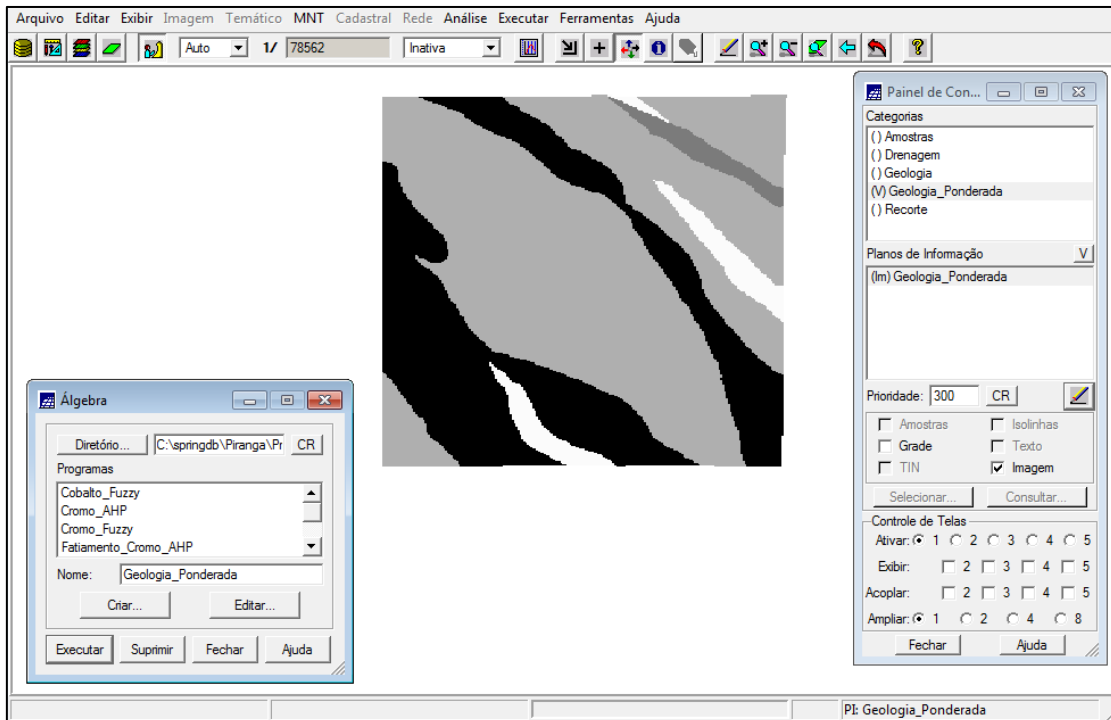
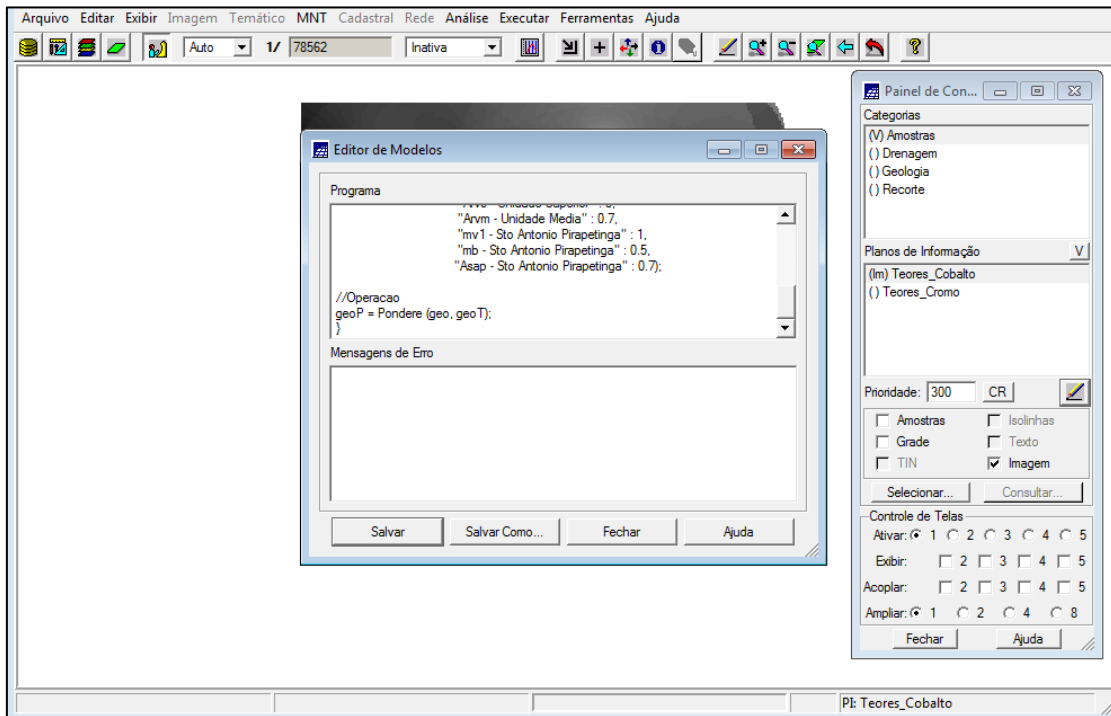
Miguel Alexandre da Cunha

Álgebra de mapas.

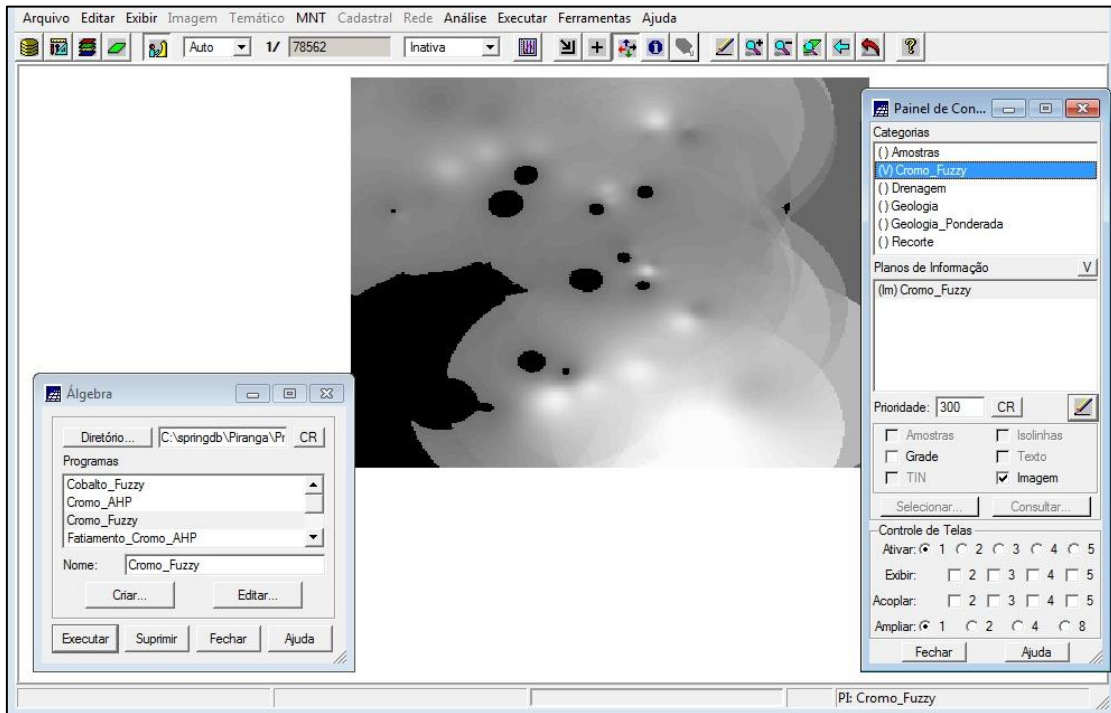
1) Gerando Grades Regulares para o Teores_Cromo e Cobalto:



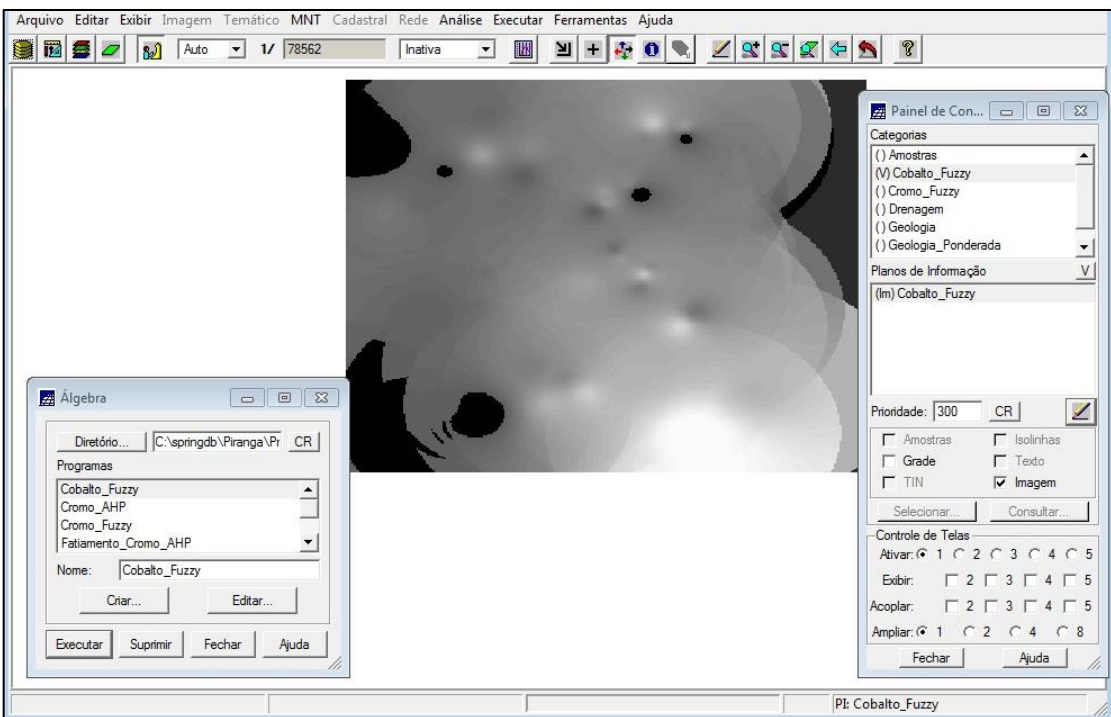
2) Gerando Mapa Ponderado da Geologia:



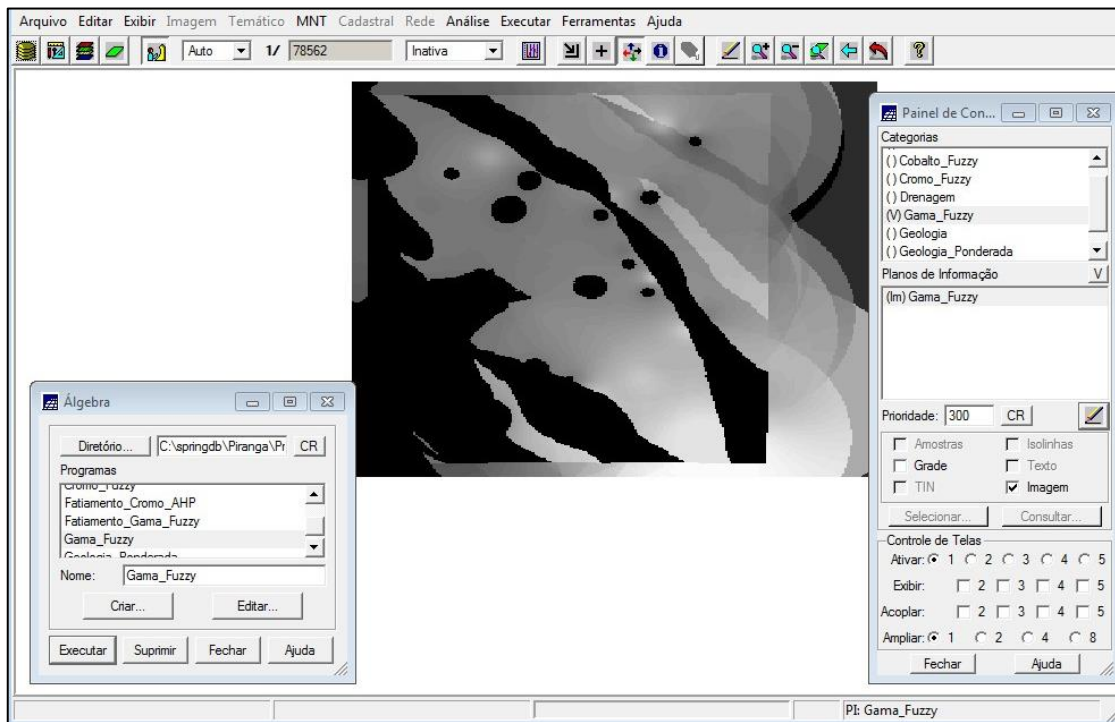
3) Mapeamento a grade Teores_Cromo utilizando Fuzzy.



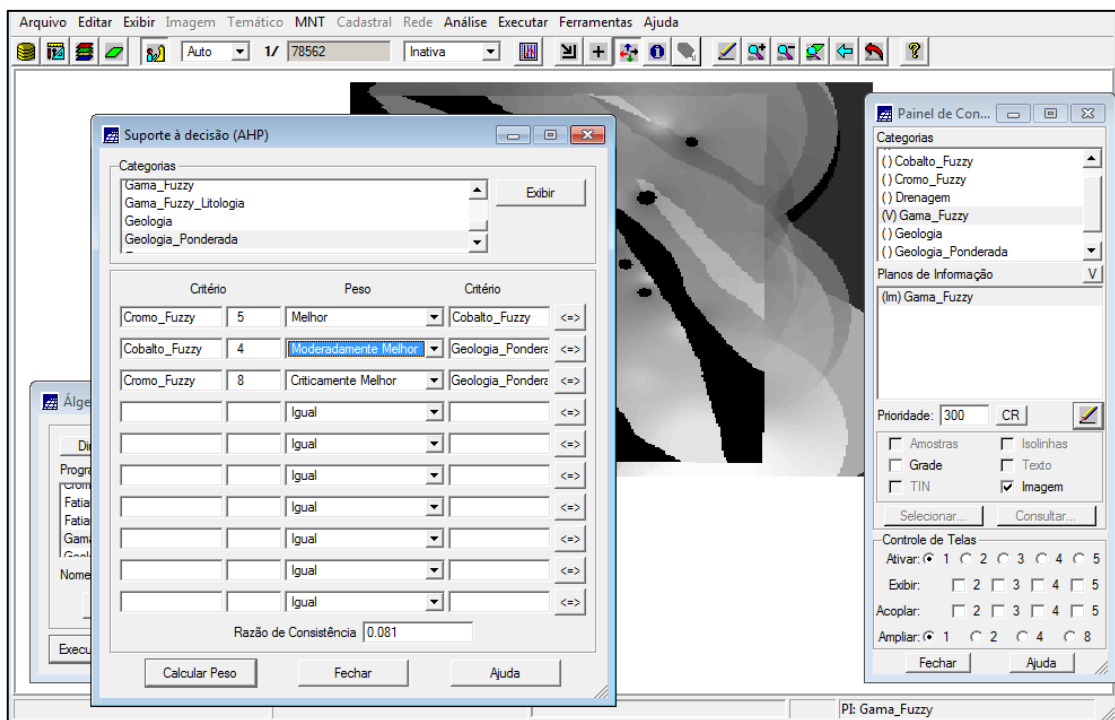
4) Mapeamento a grade Teores_Cobalto utilizando Fuzzy

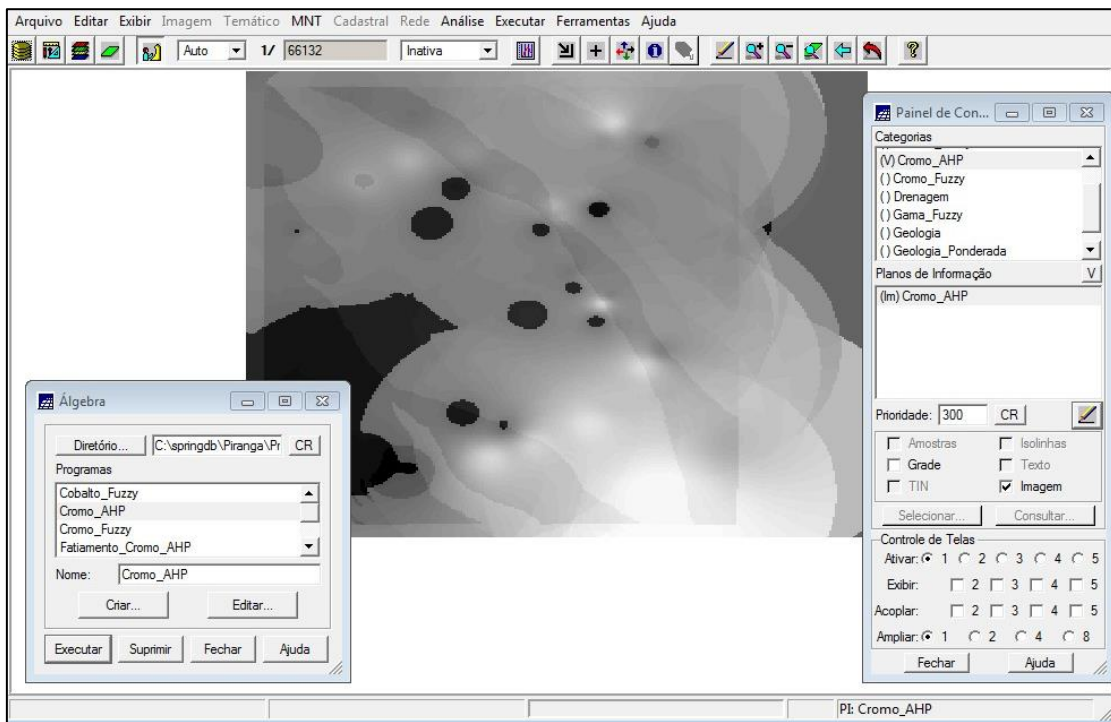
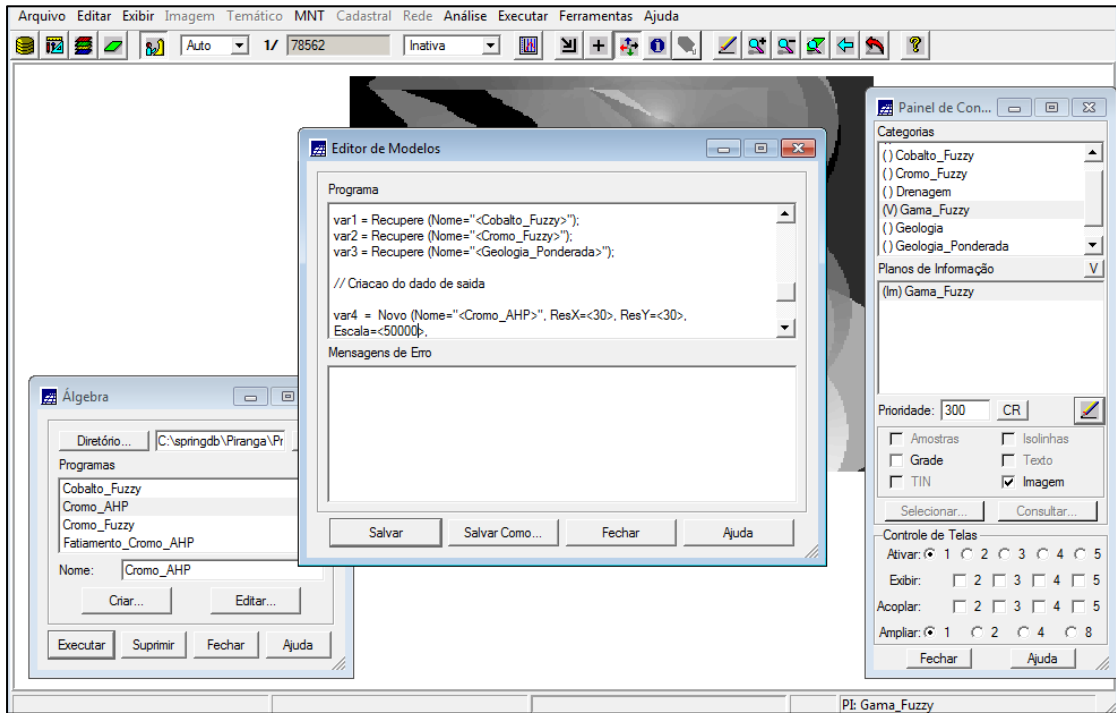


5) Cruzando os PI's utilizando Fuzzy Gama:

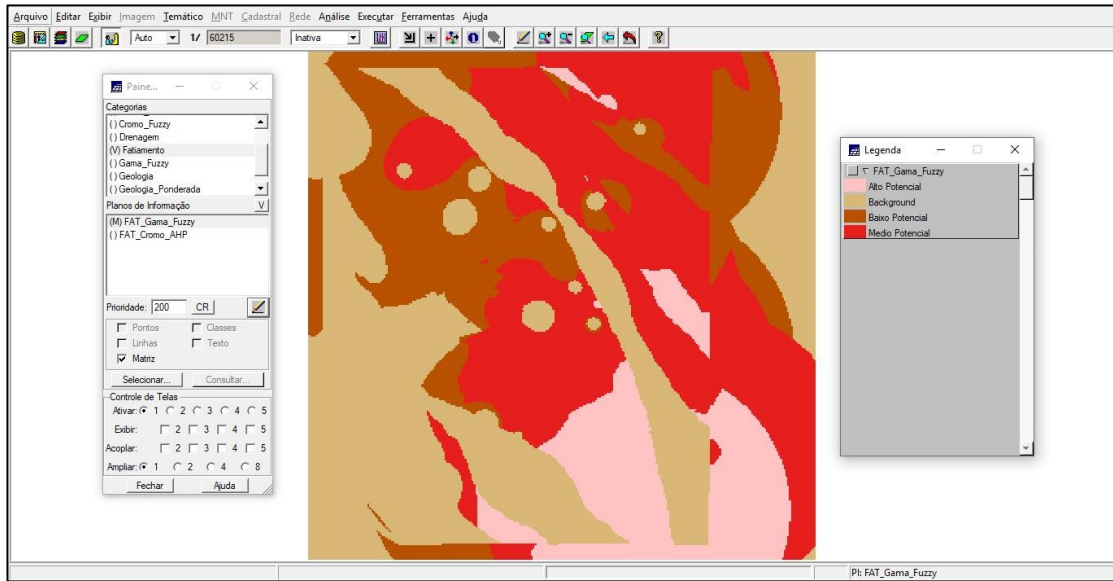


6) Criando Cromo_AHP utilizando a técnica de decisão AHP:





7) Fatiando no Geo-Campo Gama_Fuzzy:



8) Fatiando no Geo-Campo Cromo_AHP:

