



MINISTÉRIO DA CIÊNCIA, TECNOLOGIA E INOVAÇÃO  
**INSTITUTO NACIONAL DE PESQUISAS ESPACIAIS**

## SER 300 – INTRODUÇÃO AO GEOPROCESSAMENTO

### LABORATÓRIO 2- CARTOGRAFIA E INTEGRAÇÃO DE DADOS

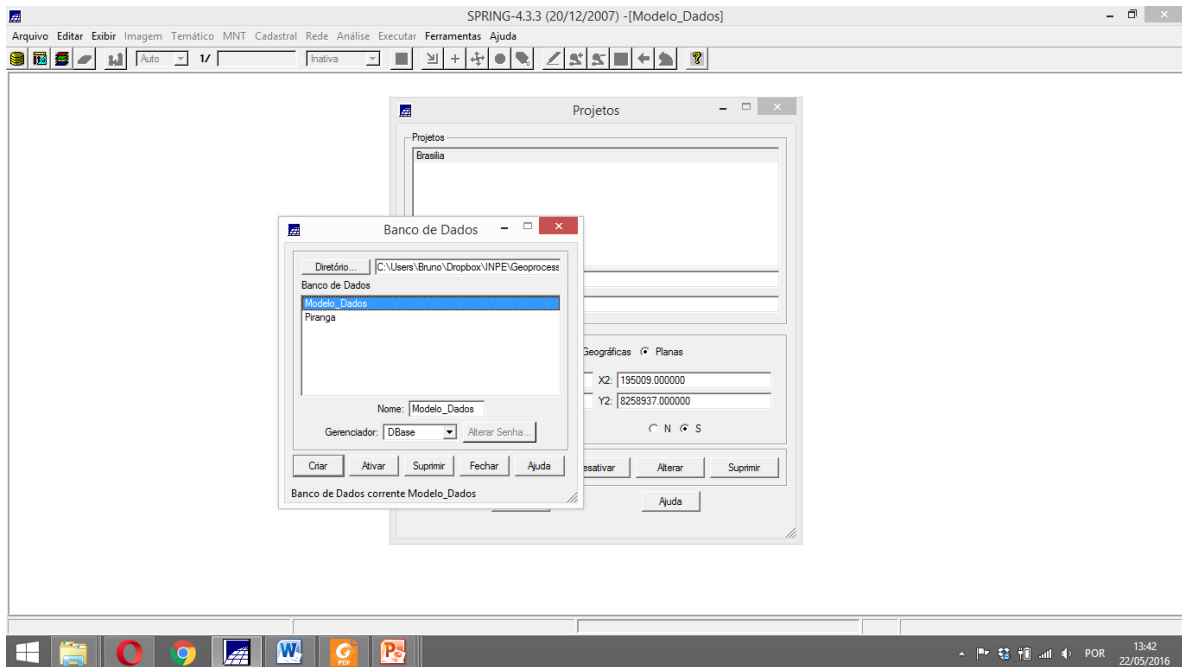
Bruno Montibeller

INPE  
São José dos Campos  
2016

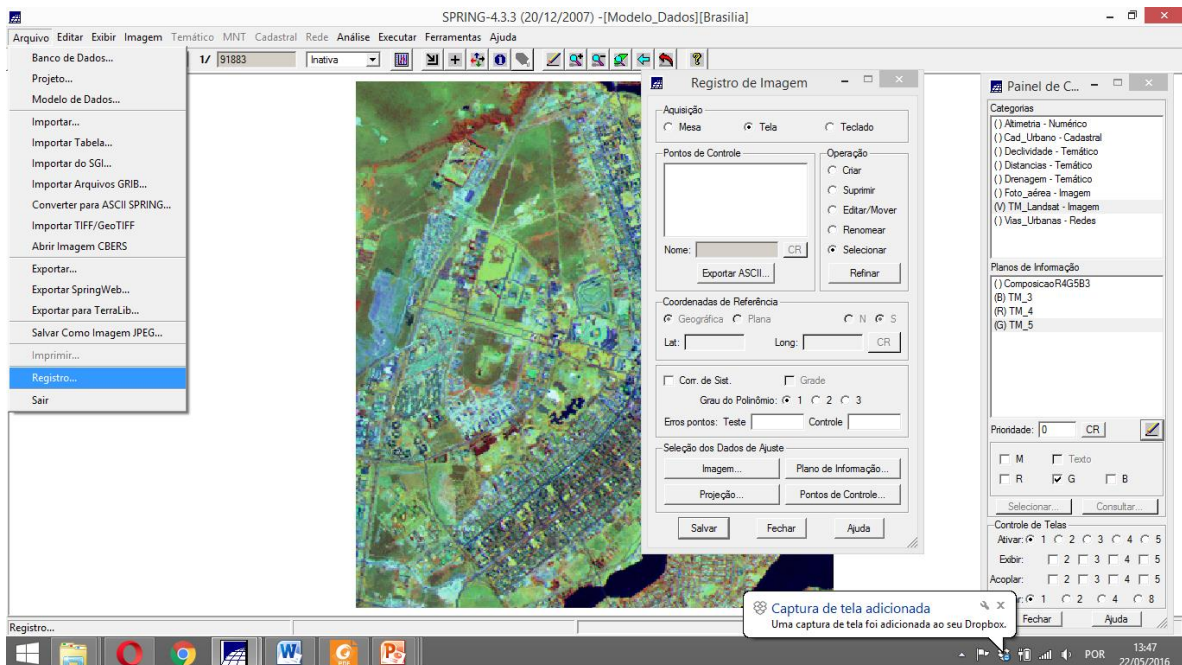


## Exercício 1 - Registro de Imagem

Primeiro passo é encontrar o diretório de armazenamento do banco de dados e ativar o projeto

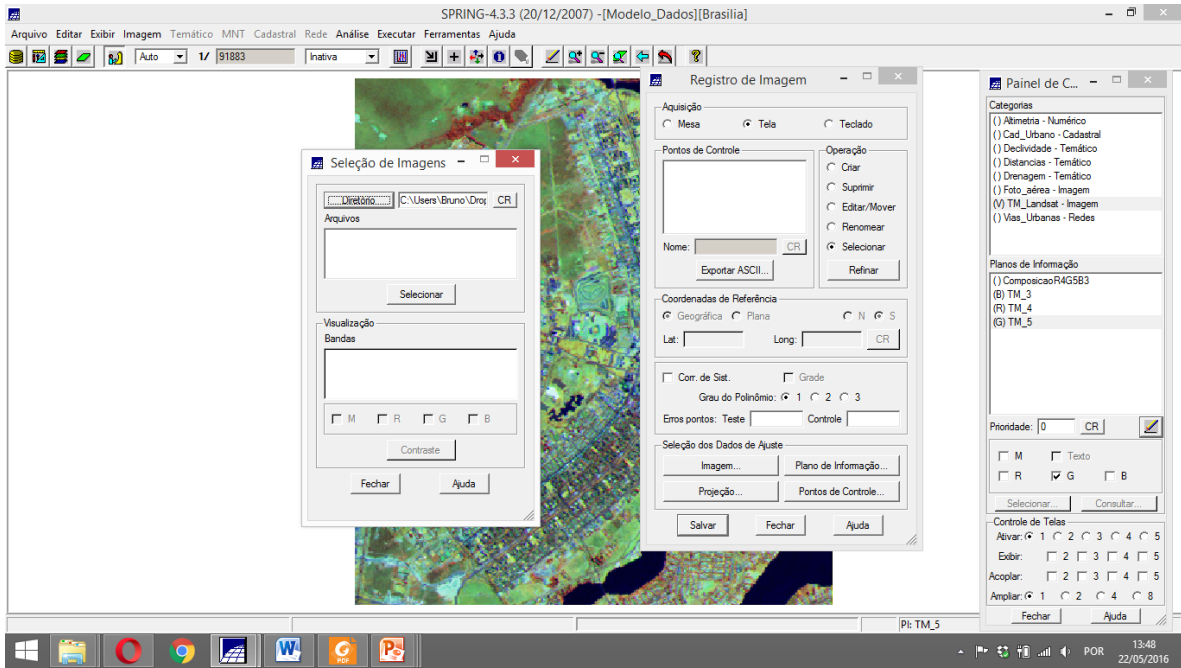


O procedimento a seguir é o primeiro passo para o registro de imagens utilizando o Spring

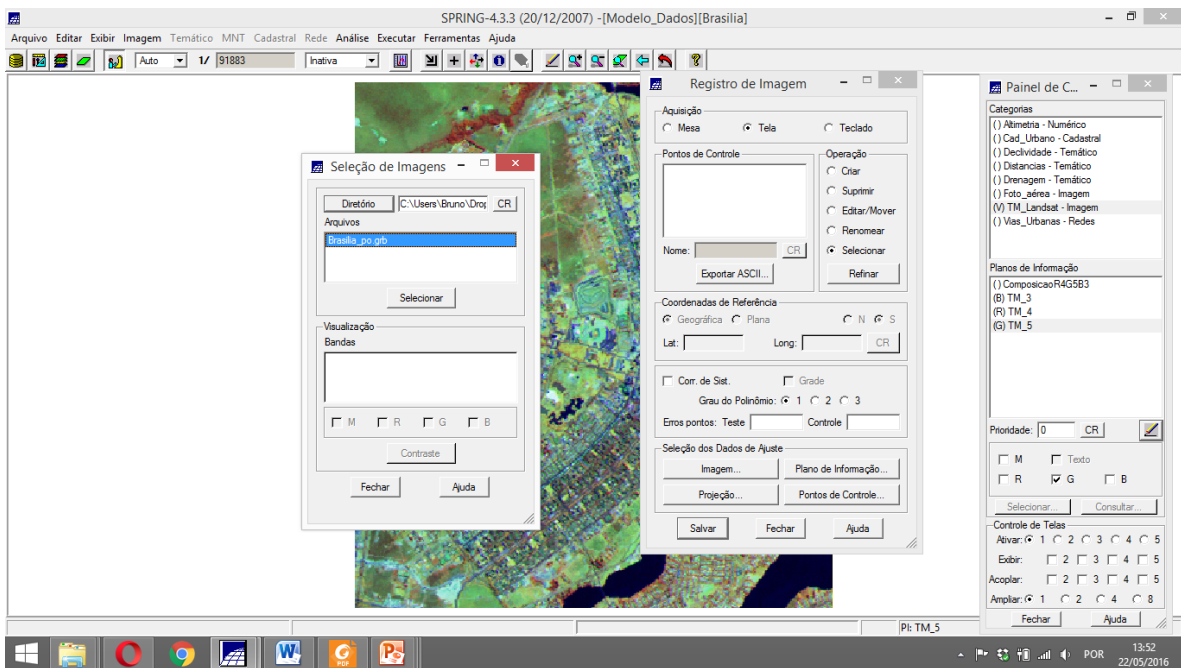




## Selecionar a imagem

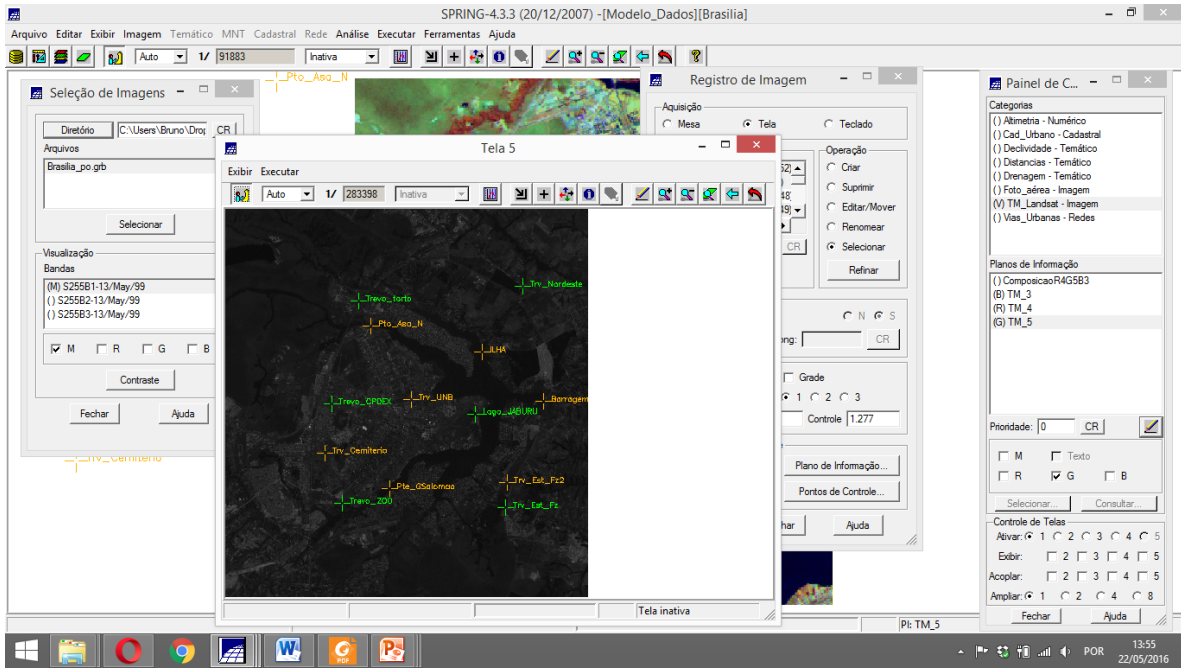


## Selecionar a imagem

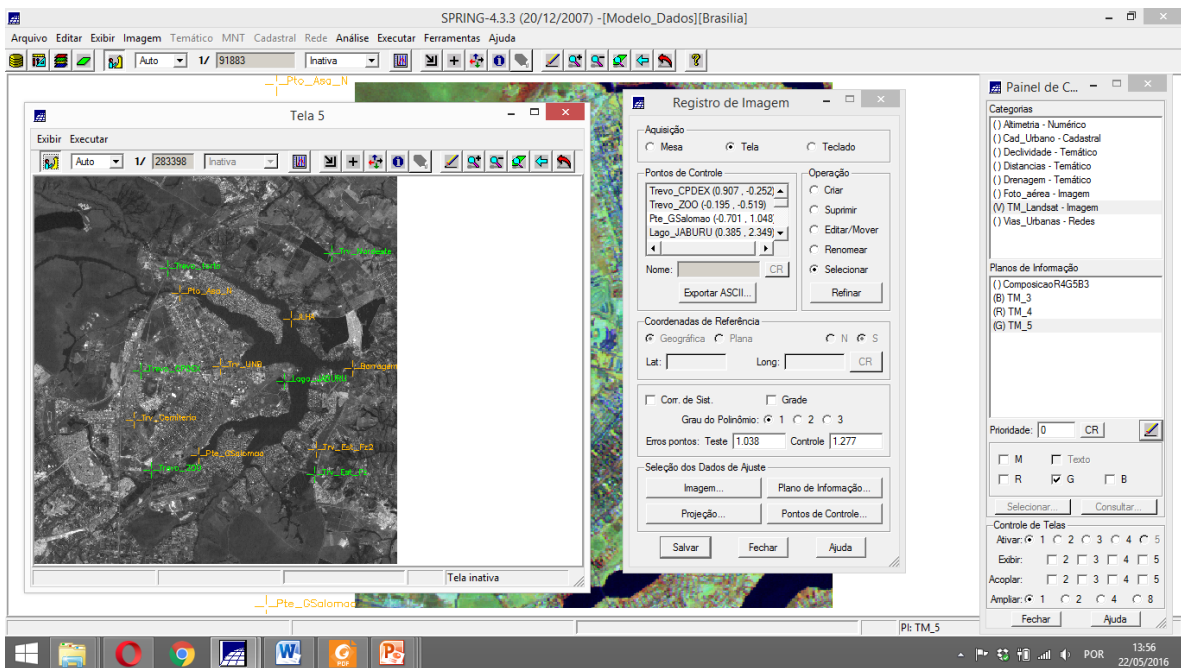




## Executar e desenhar para aparecer os pontos

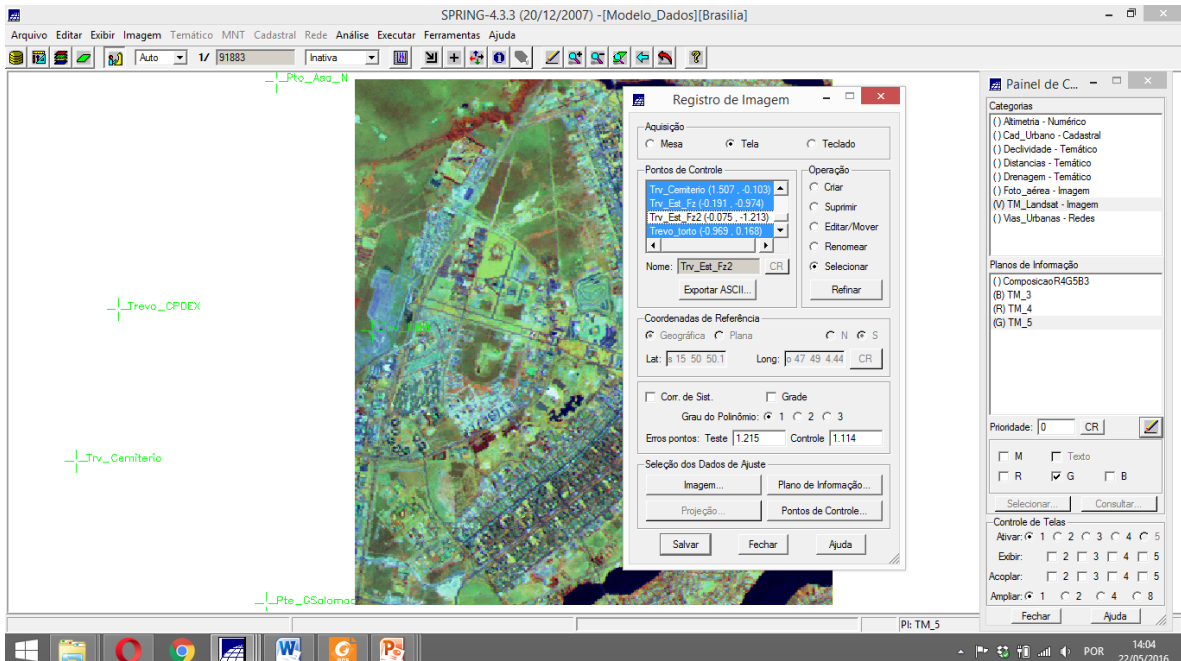
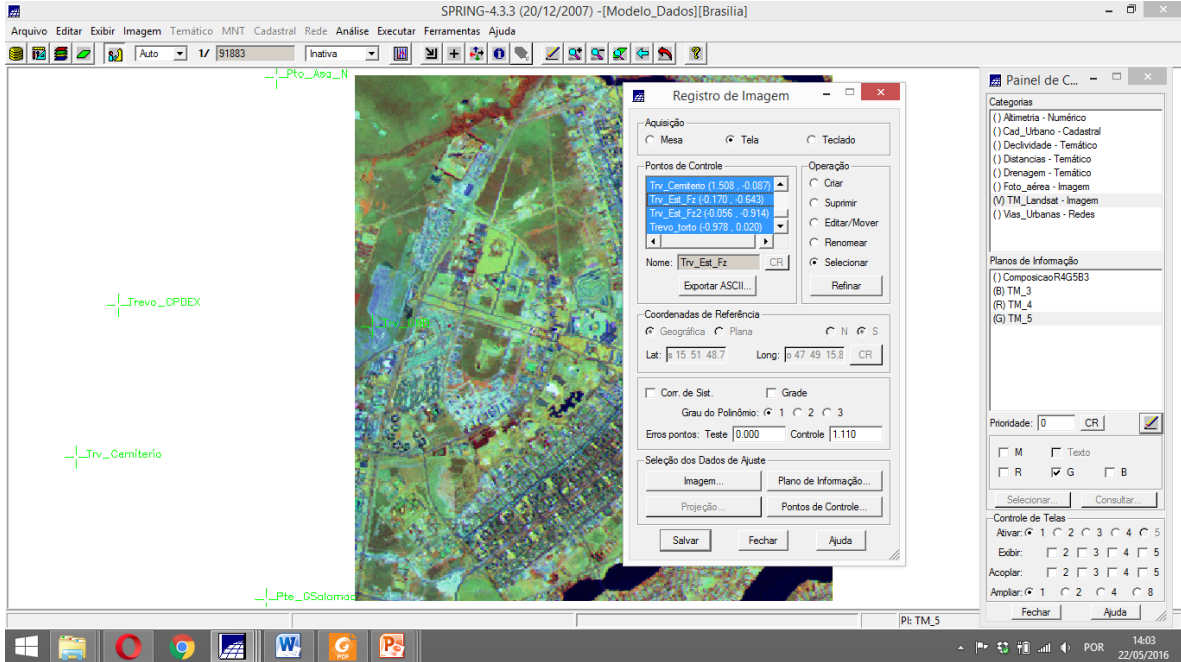


## Após contraste





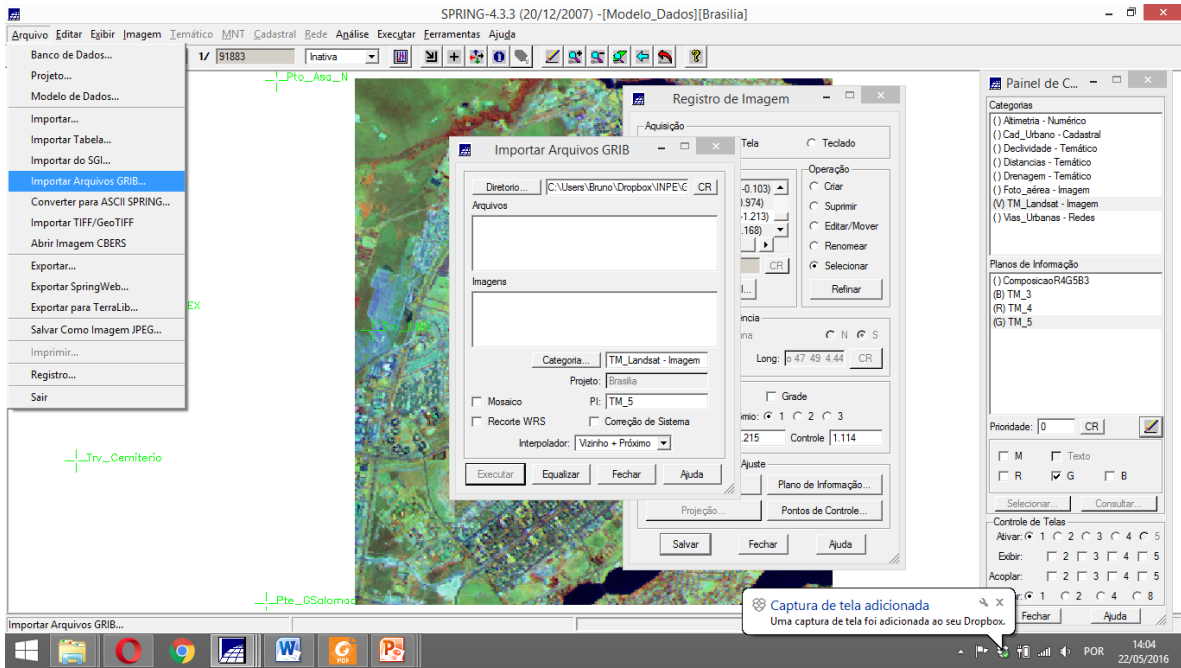
Ao seleccionar todos os pontos se percebe um erro 0, mas ao retirar apenas um, o erro aumenta



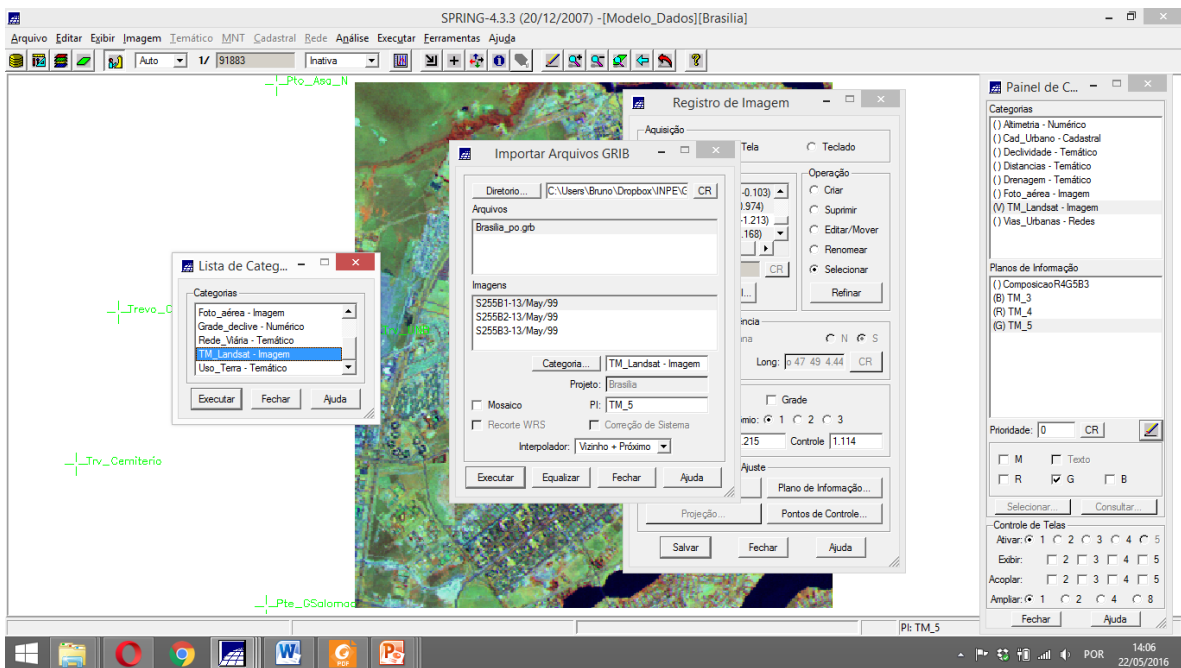




## Importar arquivo GRID

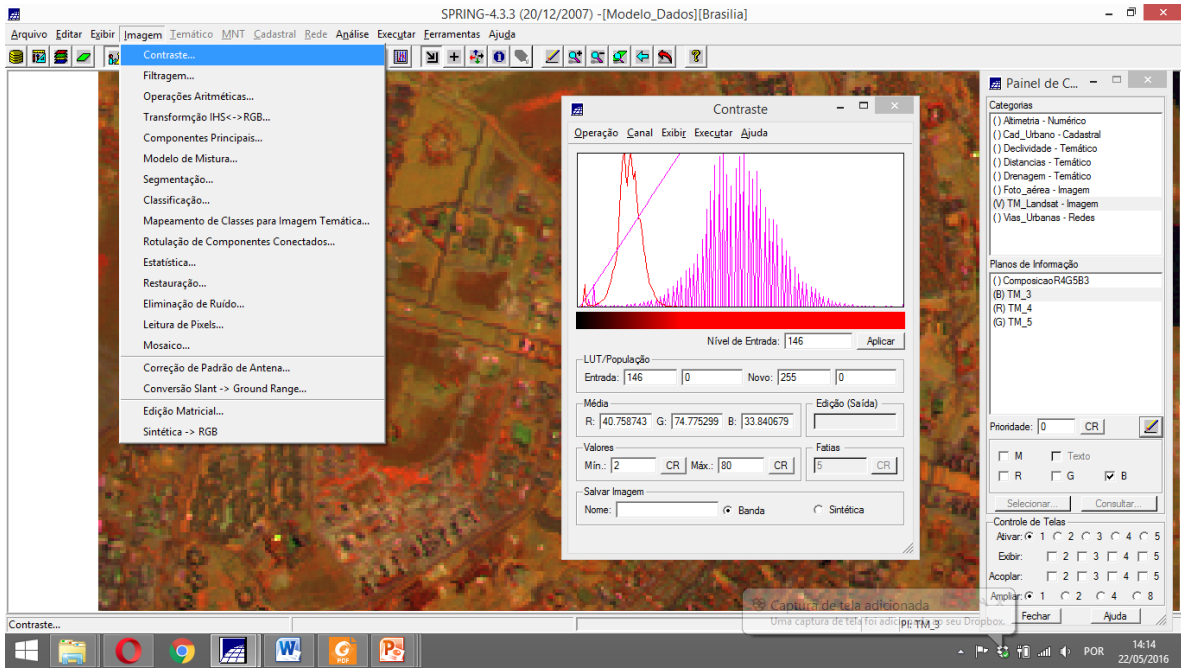


## Selecionar categoria



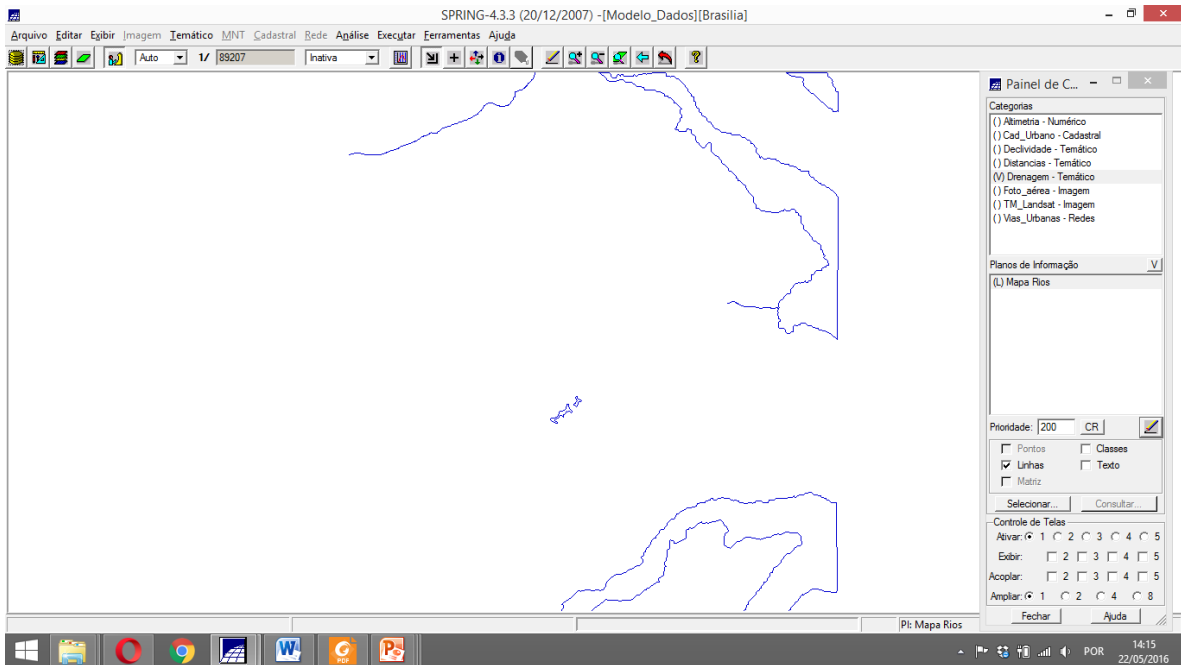


## Contraste



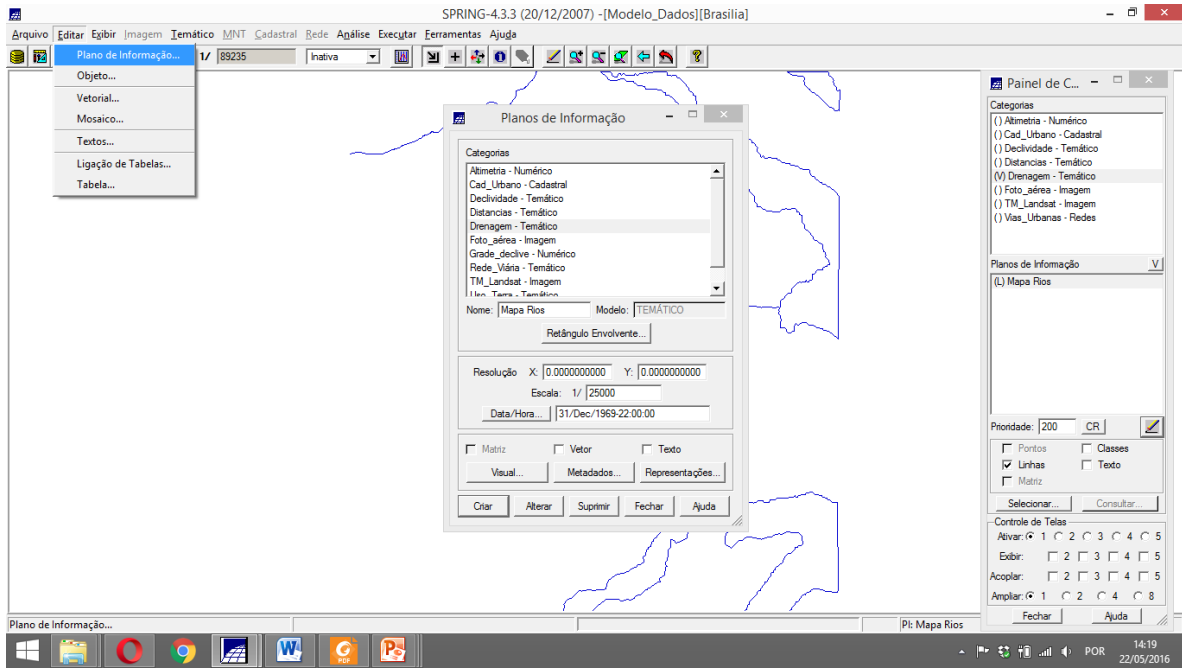
## Exercício 2 - Simplificando a Rede de Drenagem

### Drenagem

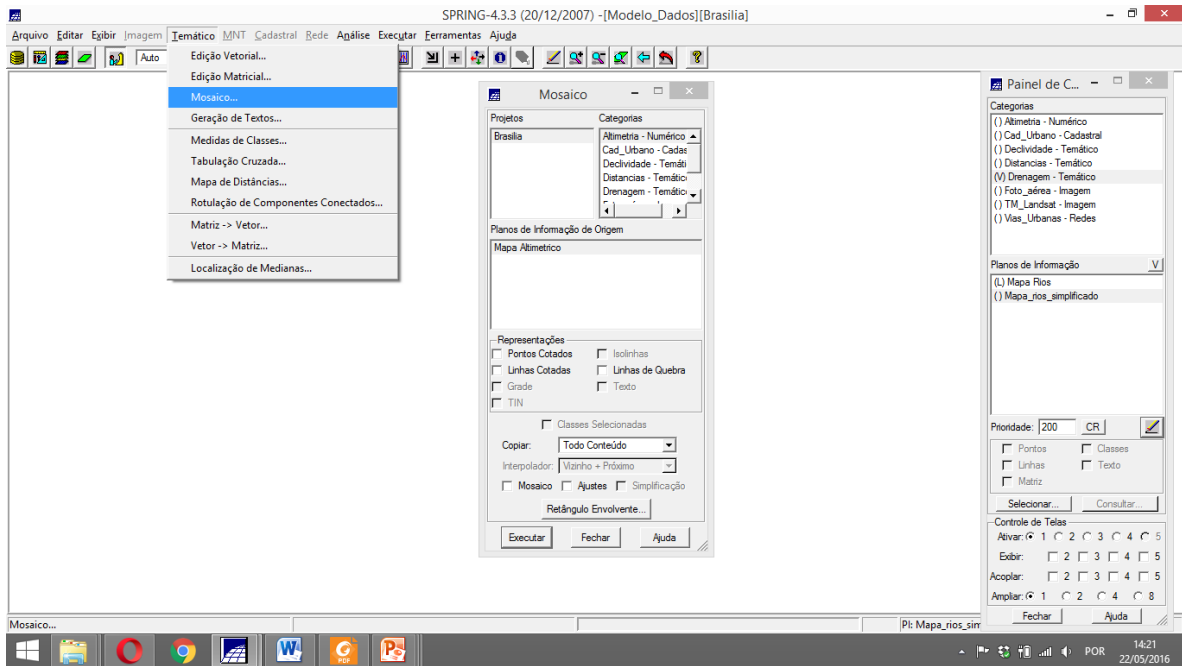




## Editar plano de Informação



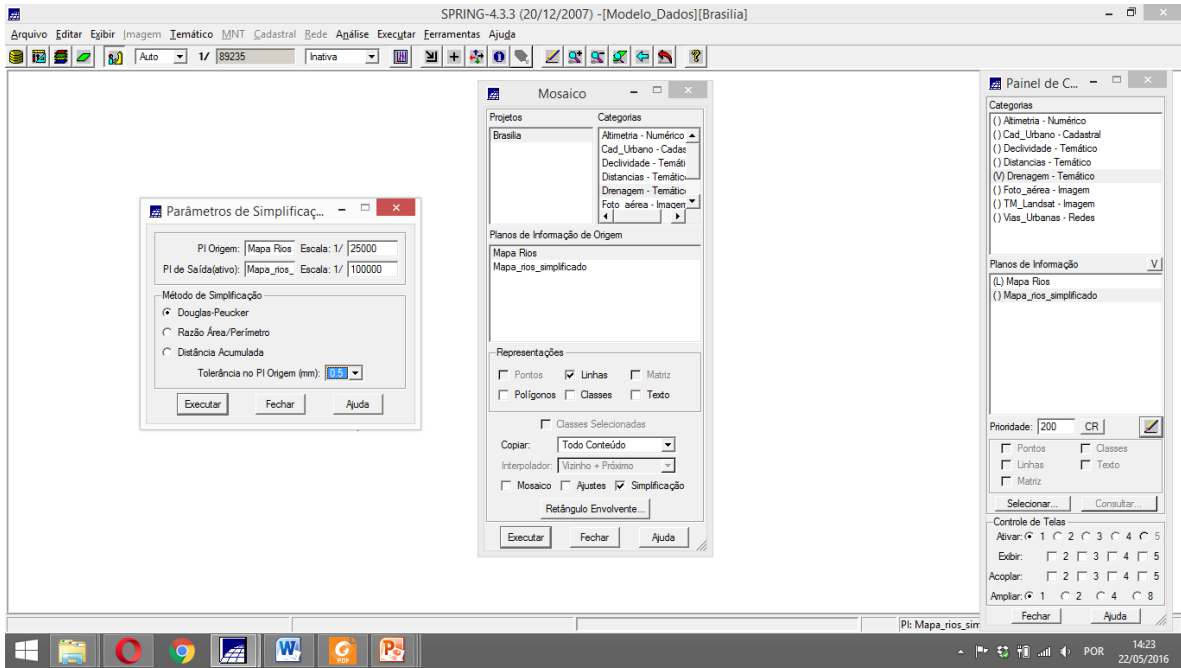
## Mosaico







## Parâmetros para simplificação



## Resultado

